

Volunteer Hours 2018 – 2019 = **3367** (Volunteer Hours October to March 2019 = 1678)

Volunteers have :

Installed 5 large kit bridges at, Ansley AE126, Mancetter AE109y, Wolvey R13, Brinklow R304, Oxhill SS36a and a bridle bridge SD151a at Bearley. Installed 9 sleeper/ditch crossing

Aston Cantlow AL90 ditch crossing before



Solihull Ramblers Aston Cantlow AL90 ditch crossing



Completed 3 deck repairs

Nuneaton Volunteer Group have carried out vegetation clearance on a number of routes including bridleway N39.

Stratford Ramblers do regular vegetation clearance on a number of popular routes in their area pre-empting reports from the public. At Bidford on Avon they cleared a flight of more than twenty steps of vegetation.

Stratford Ramblers at Wellesbourne



Bidford on Avon steps



Southam Volunteer Group having completed surveying their paths they have been refreshing signs and carrying out vegetation clearance on more than 10 paths. They will be installing gates and bridges in the near future..

Cotswold Wardens have continued revetment works around Edge Hill.

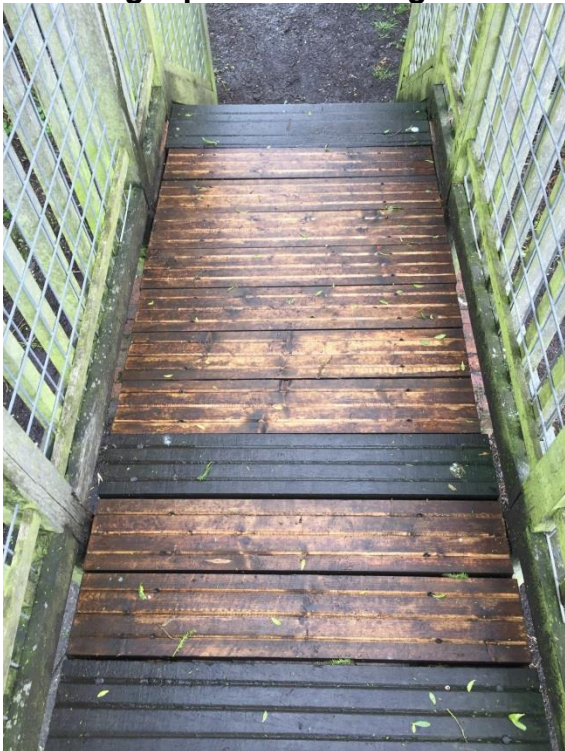
Ladbroke have cleared vegetation and refreshed signs.

Harbury Volunteer Group have included bridleway W118b in their programme.

Alcester AL38b Bank revetment has been successfully carried out by our Contractor.



Coleshill M56 path has been re-opened following repair to the bridge.



Whitnash W117 Footpath surfaced using Section 106 funds

