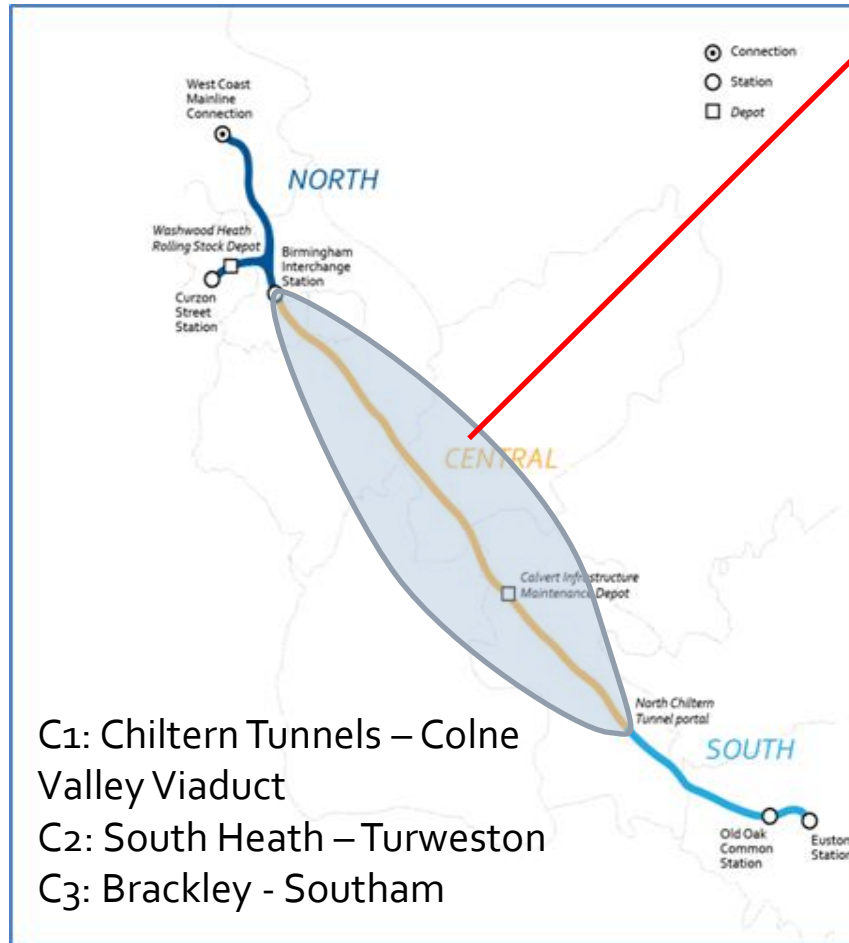
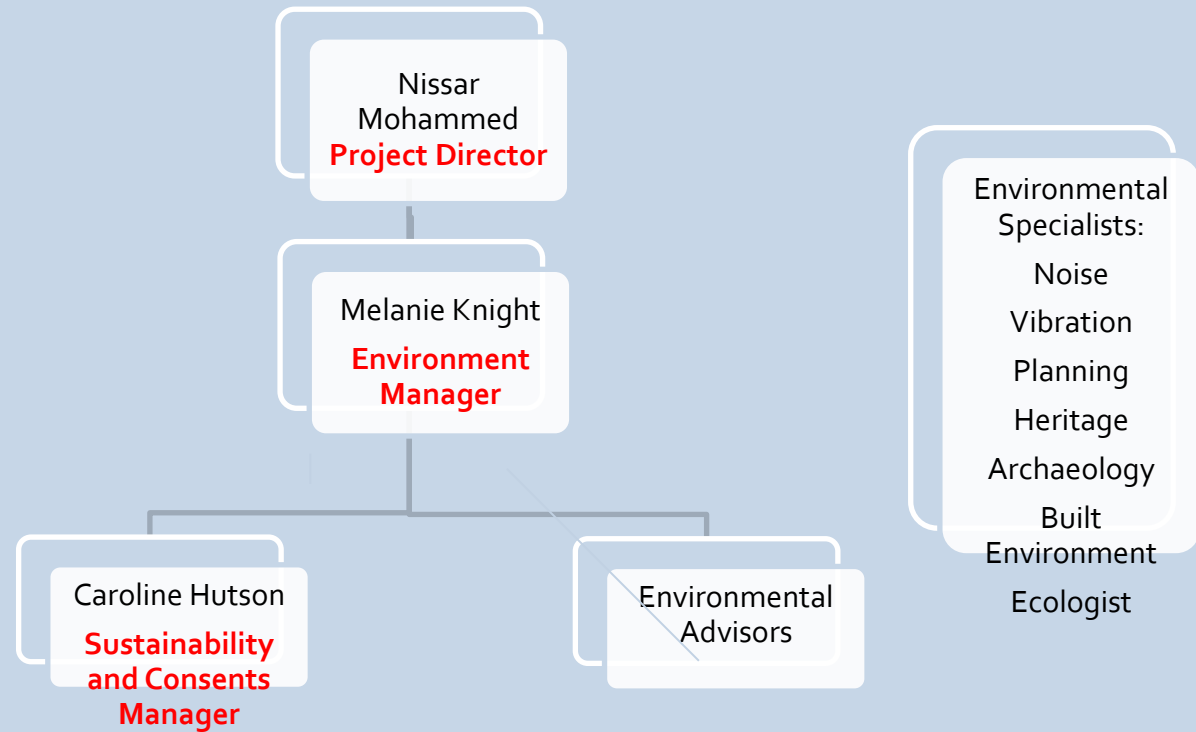


HS2 Area Central Enabling Works

Infrastructure Delivery – Central Area Delivery Partners



Fusion is the Early Works Contractor (EWC) Delivery Partner in AREA Central. Our Key Environment team members are:



Key construction activities – the next 6 months

HABITAT CREATION

Priority habitats for species translocation across Area Central

ECOLOGICAL SURVEYS

Seasonal verification surveys and surveys of newly accessible land

CONSENTS & APPROVALS

Planning approvals, Natural England licence applications, S.61

HISTORIC ENV. INVESTIGATIONS

Investigations for built heritage and archaeology

ENGAGEMENT

Communications and personal contact with affected parties
Wider community events

ENV. MONITORING

Noise
Air quality

DESIGN

Highways, utilities, habitat creation & landscape planting

LAND ACCESS

Securing access for surveys and construction works

Key Liaison

- Fusion is meeting with Local Authorities across the central section to agree the finer details of consents and applications associated with the early works.
- Meetings held have been very useful and given Fusion some detailed knowledge of site risks and issues around a wider 'nuisance' risk.
- Other meetings are will be booked in as soon as we have more detailed designs for our mitigation sites.
- Several community events are underway through the Central section with our environment team on hand to answer questions.

Timeline: High level schedule

	Q1	Q2	Q3	Q4
Completion of Outstanding Eco & Env Surveys		█		
Engineering Surveys		█		
Pre GI Eco & Arch Surveys & Watching Brief		█		
Ecological Mitigation Works		█		
Water Course Surveys & Design		█		
Utilities Design & Construction			█	
Invasive Species, Treatment and Control			█	
Hedgerow Translocation			█	
Instrumentation and Monitoring			█	
Demolition Surveys			█	
Landscape Planting				█
Historic Environment Arch, Blds, Burial Ground Works				█

Southam Mitigation site



THANK YOU – ANY QUESTIONS?