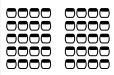
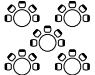

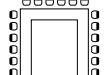
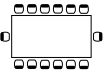
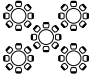




THE
OLD SHIRE HALL

The Old Shire Hall

Located in the heart of Warwick, The Old Shire Hall is a magnificent Grade I listed building offering flexible event spaces in an authentic historic setting. The impressive Great Hall is a versatile space complete with a beautiful full height ceiling. Perfect for conferences and team building by day, and exceptional award ceremonies and gala dinners by night. The rooms located within our Judges' House are a perfect setting for board meetings and exquisite fine dining experiences.

									
ROOM	THEATRE	CABARET	BOARDROOM	U-SHAPE	BANQUET	DINING	STANDING	OTHER	DIMENSIONS
THE GREAT HALL	280	200	-	-	250	250	350	-	2.8x10.1m
JUDGES' DINING ROOM	90	56	30	20	32	70	150	-	12.3x6.7m
JUDGES' DRAWING ROOM	30	24	16	12	20	30	60	-	8.4x4.5m
HIGH SHERIFF'S ROOM	30	24	16	12	20	30	60	-	8.4x4.5m
COURT-ROOMS	-	-	-	-	-	-	70	60	10.8x.9m
DUNGEON	-	-	-	-	-	-	20	-	-





The image shows the interior of a grand hall, likely a historic building. On the left, there is a stone staircase with a wooden door at the top. The walls are made of stone and feature arched windows. In the center, a stage is set up with a purple backdrop. A large screen on the right side of the stage displays the text "THE OLD SHIRE HALL" and a logo. The foreground shows several round tables covered with white cloths, each with a bottle of water and glasses. The room is lit by warm, golden light, possibly from chandeliers.

The Great Hall

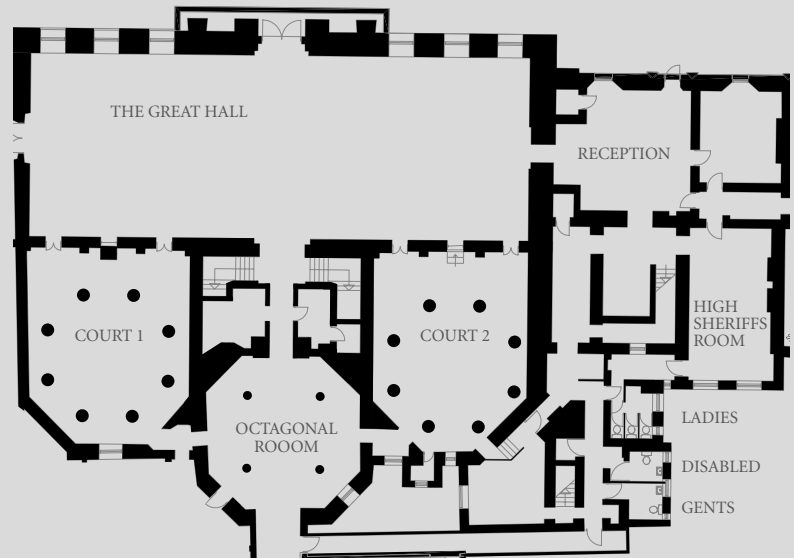


The Great Hall

The historical significance of The Great Hall, combined with its size and scale, makes this a unique space in which to hold your conference, product launch or awards ceremony.

The compartmental ceiling and period chandeliers add to the character of the hall, along with its impressive entrance through the Judges' House.

The Great Hall can be used on its own or hired alongside the two original courtrooms, which make great breakout spaces.



The Great Hall Conference





E HALL



Day Delegate Package

There is nothing standard about our packages,
but for £42 + VAT per person we include

- Main meeting room hire (minimum numbers apply)
- Unlimited tea, coffee, water and cordials
- Fruit smoothies on arrival
- Mid-morning pastries
- 2 course cold buffet lunch
- Home-made flapjacks and cookies for afternoon break
- Bowls of red apples
- Sweets in meeting room
- Wi-Fi
- AV
- Stationery

Day delegate lunch menu - the above package includes
the following for lunch

- Cold meat platters - honey and mustard ham, pepper crusted rare roast beef, herb roasted corn fed chicken breast
- Leek and mushroom quiche (v)
- Homemade coleslaw
- Dressed mixed leaf and herb salad
- Potato and chive salad
- Tabbouleh salad
- Fresh fruit skewers



Courts, Cells & Dungeon

Leading directly off The Great Hall are two octagonal courtrooms. Complete with beautiful high domed ceilings and original features they make an ideal location for breakout spaces, debating and drinks receptions.

A flight of stone steps leads to the atmospheric 17th century dungeon, which dates back to the original county gaol, as well as the more recent holding cells. Perfect for themed events and tours.



Judges' House

The Judges' House contains three meeting rooms which can be hired individually or together. Complete with stunning original features, impressive artwork and decorated in a regency style, the rooms allow for creative brainstorming or elaborate fine dining.

High Sheriff's Room

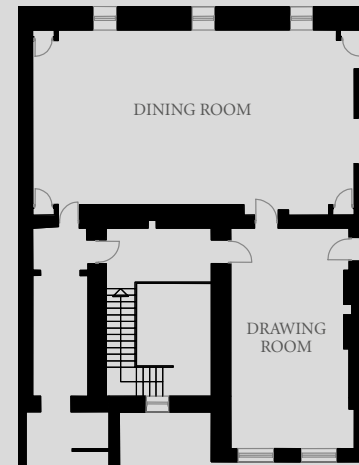
Located off the main reception hall is the High Sheriff's room. This light, bright and airy space is ideal for boardroom meetings and seminars. The room is available for hire on its own, or as a breakout space for bookings in either The Great Hall or the Judges' Dining Room.



The Judges' Dining and Drawing Rooms

Overlooking historic Northgate Street described as 'one of the most handsome Georgian streets in the Midlands', the faithfully restored Judges' Dining and Drawing Rooms, are perfect for smaller conferences and fine dining.

Access to the first floor is gained via a sweeping staircase into the Judges' Drawing Room. The versatile layout of these rooms allows for creative use of the space, accommodating conferences by day and fine dining by night.





Gala Dinners and Celebration Events

Wild View Events, our onsite catering and management team will be more than happy to create bespoke menus and discuss ideas with you.

Whether you are looking for a three course dinner or seven course banquet, with a wealth of experience, Wild View can create the perfect menu to 'wow' clients or reward staff.



A photograph of a grand, historic hall set up for a formal dinner. The room features high ceilings, stone walls, and large arched windows. Numerous round tables are covered with white cloths and set with glassware, plates, and lit candles. Wooden chairs are arranged around the tables. The lighting is warm, coming from chandeliers and wall sconces. The text "The Great Hall Banqueting" is overlaid on the left side of the image.

The Great Hall Banqueting





Sample Menu

Smoked haddock scotch egg,
watercress mayonnaise

Roast rump of lamb, fondant potato,
cauliflower cous cous,
pomegranate and salsa verde

Costa Rican coffee panna cotta,
with bitter sweet chocolate and rum sauce

Themed Events

The Old Shire Hall events team can help to create your perfect event. From seasonal celebrations to themed dining, gin or whisky tastings, or even courtroom re-enactments, the events team can make it happen.



Audio Visual

Working alongside our professional AV contacts in The Old Shire Hall you can host a 21st century event in a 17th century location.

Put your event in the hands of innovative, passionate specialists who genuinely care about the detail. We can work with you to design, develop and deliver events, both large and small, providing your guests with an occasion to remember.

Services include:

- Event Production
- Technical Services
- Video and Animation
- Design and CAD
- AV Installations



Filming and photo-shoots

With a large choice of spaces ranging from historic courtrooms, holding cells, a dungeon, regency style rooms and The Great Hall, the internal areas of The Old Shire Hall provide perfect backdrops for professional photo-shoots or filming.

The external front facade located on historic Northgate Street is Georgian in style with Corinthian style architecture and the interior has examples of fine carved stone and moulded plaster decoration, with elegant classical details, ideal for imaginative photographs.

Credits

Catering and Event Management
Photography
Lighting

Wild View Events – www.wildviewevents.co.uk
Darren Bedding Photography – www.darrenbeddingphotography.co.uk
iElive – ielive.co.uk

“Our evidence speaks for itself”

“I was blown away by how beautiful everything looked in the Great Hall. The entire evening ran like clockwork thanks to the slick operation of the team at The Old shire Hall. The staff were friendly, polite, and most of all blended in- you didn’t know they were there, yet everything happening, as if by magic. The food by Wild View events was delicious and nothing was too much trouble.

I would not hesitate in recommending The Old Shire Hall and Wild View Events to anyone”

Kirstie Darnell – Charity Ball May 2017

Contact us


Located on Northgate Street in the centre of Warwick, a 2 minute walk from the market square.
Nearest train station is Warwick which has direct routes to London Marylebone and Birmingham.
2 miles from the M40 junction 15 (Longbridge), follow signs to Warwick Town centre.



Old Shire Hall
Northgate Street, Warwick, CV34 4SP
Telephone 01926 736350

 oldshirehallwarwick

 @oldshirehall

 TheOldShireHall

