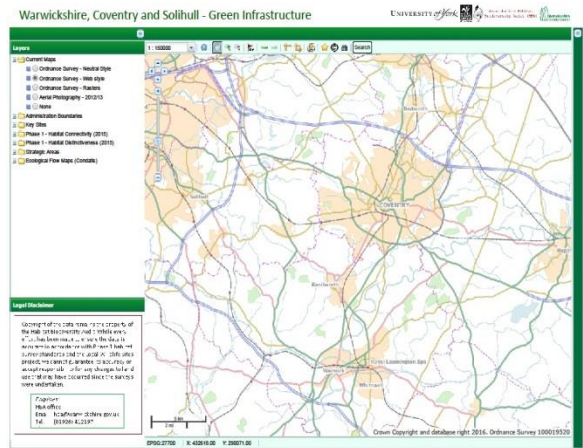



Warwickshire, Coventry and Solihull Green Infrastructure Mapping Guidance

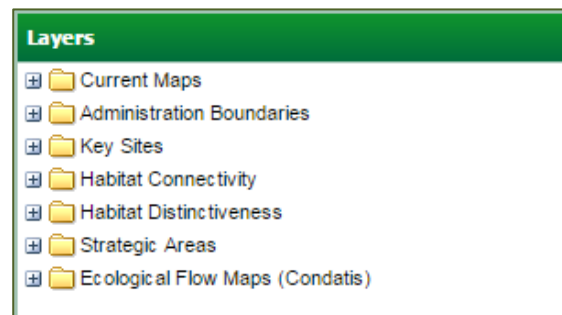
Introduction

The Green Infrastructure [web page](#) is the supporting evidence to the Warwickshire, Coventry and Solihull Green Infrastructure Strategy [\[link\]](#)



It is intended to provide the information necessary to make ecologically sensitive land use decisions for landowners and policy makers.

The page consists of folders that are expandable by clicking on the  symbol to the left of each folder. This will reveal layers that become visible on the adjacent map once selected by clicking in the circle. An explanation to each folder and layers within explained below. If you have any queries please contact planningecology@warwickshire.gov.uk.



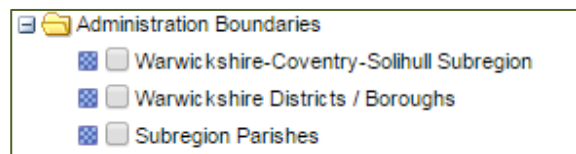
Current Maps

This folder holds the background (map) layers onto which other layers will be added. There are various Ordnance Survey styles, Aerial Photography (2012/13) and also the option of none (should you wish not to have any background mapping).



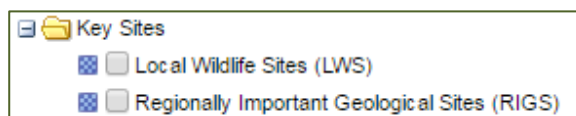
Administration Boundaries

This folder enables Local Authority and Parish boundaries to be plotted onto the adjacent map.



Key Sites

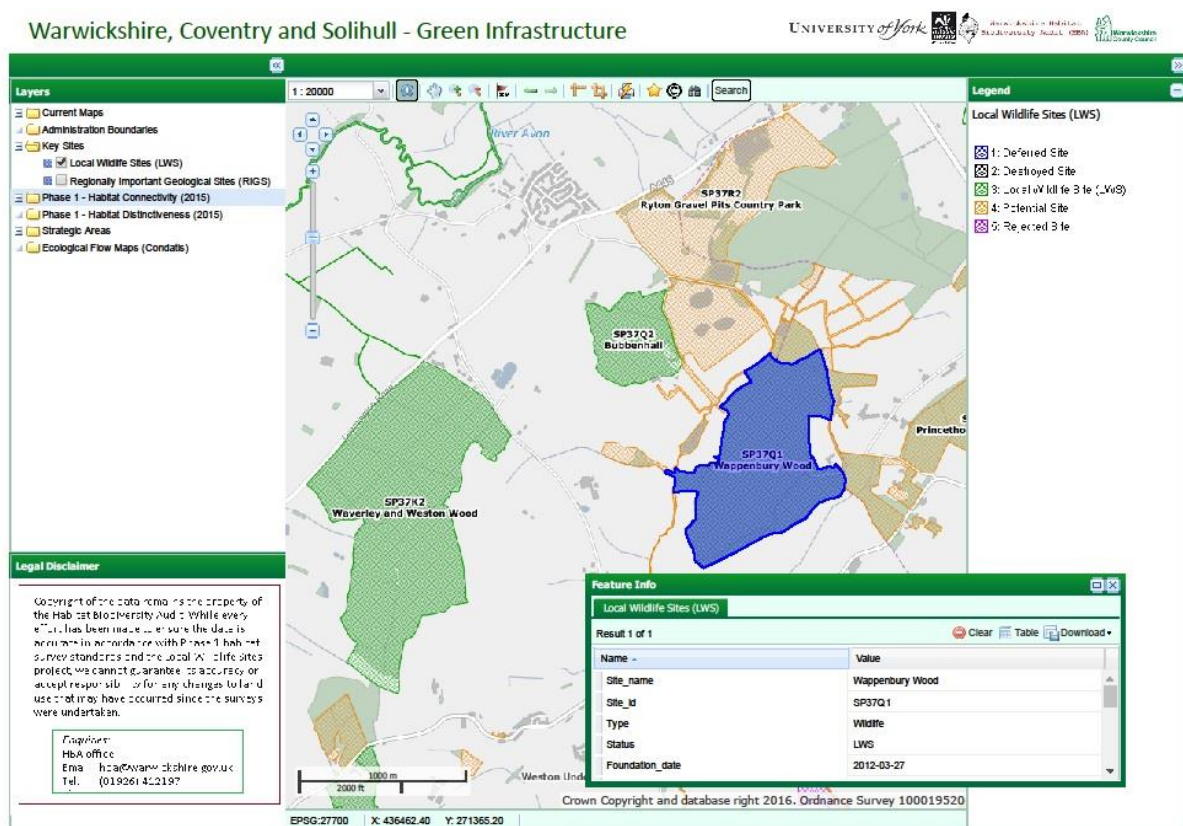
County important sites can be plotted on the adjacent map. If you would like to see national and international sites these can be found on the Government Mapping site called Magic [\[link\]](#)



Local Wildlife Sites (LWS)

Warwickshire, Coventry and Solihull together have more than 550 designated Local Wildlife Sites. They vary considerably in size and shape. They can be privately or publicly owned and range from single wildflower meadows to waterways and ancient woodlands. These special areas have been identified and selected by the Habitat Biodiversity Audit's Local Wildlife Sites Partnership which comprises all the local authorities, Warwickshire Wildlife Trust and Warwickshire County Council with guidance from Natural England and the Environment Agency

Unlike designated nature reserves these special places are not protected by law. While they have no direct legal status, Local Wildlife Sites are considered important enough to receive recognition within the planning system. National planning policy requires local authorities to identify Local Wildlife Sites and provide for their protection through local policy. All Local Wildlife Sites are recorded and shown on the County and local green infrastructure plan. The Warwickshire Green Infrastructure web maps shows the distribution of Local Wildlife Sites by their current status, including sites that have been designated, deferred sites awaiting a final decision, potential sites waiting to be surveyed, rejected sites that have failed to meet the selection criteria and sites that have since been destroyed.

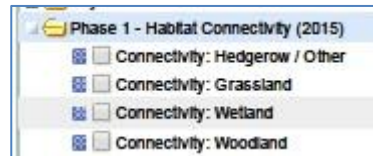


Local Geological Sites (LGS)

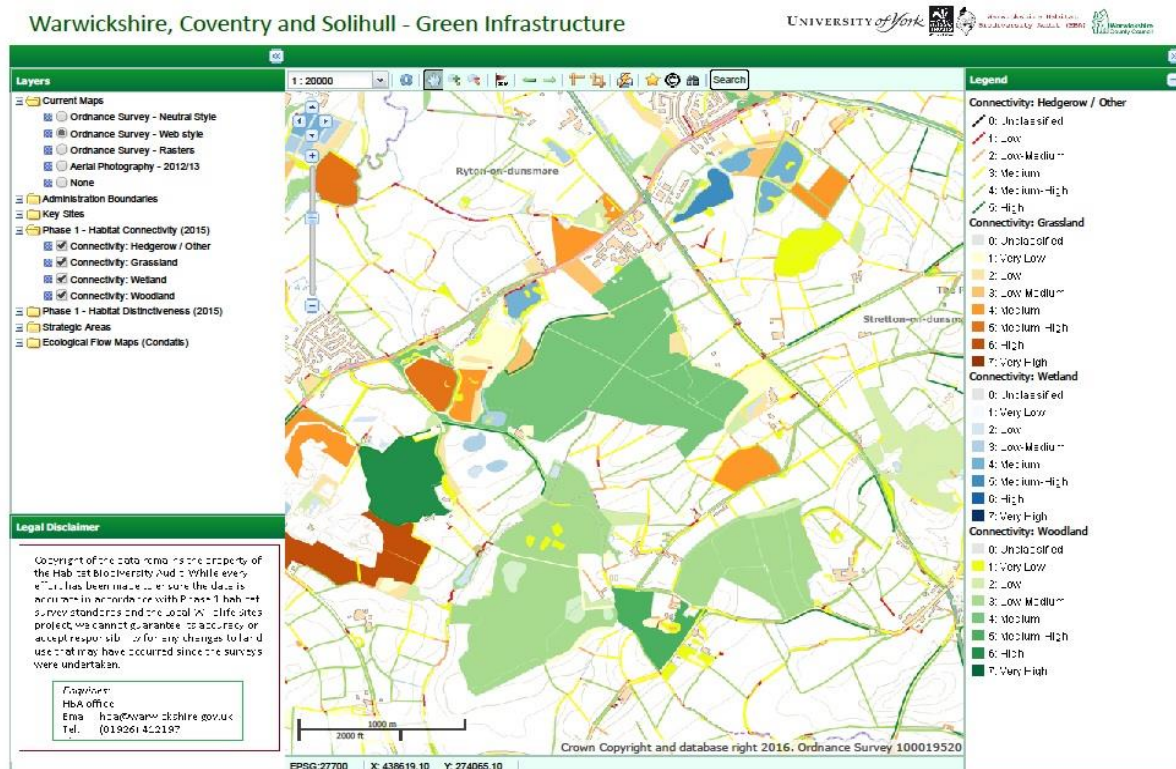
Local Geological Sites (formerly known as RIGS - Regionally Important Geological and Geomorphological Sites) are sites that exhibit important geological and geomorphological features. Some geology sites are recognised for their scientific, educational, historic and aesthetic value and are protected from harmful development by legislation and planning policy. As with LWS (above) they can be privately or publicly owned and therefore may only be accessed at the landowner's permission.

Phase 1 Habitat Connectivity

The Warwickshire sub region connectivity map was a project started in 2013 with York University to measure how connected the habitats are for wildlife.




Four main habitat types were identified from the Phase 1 habitat survey including; broad-leaved woodland and scrub, priority grasslands and wetlands excluding rivers; hedgerows. These were then modelled by York University to score each habitat area to determine how well (or not) it was connected to its neighbouring habitat type. The web map shows the habitat connectivity for all three area habitat types and the linear hedgerows. This work is continuing to be developed in order to improve our understanding of how animals can move about in a highly fragmented landscape such as Warwickshire and where we can help them by filling in the gaps.



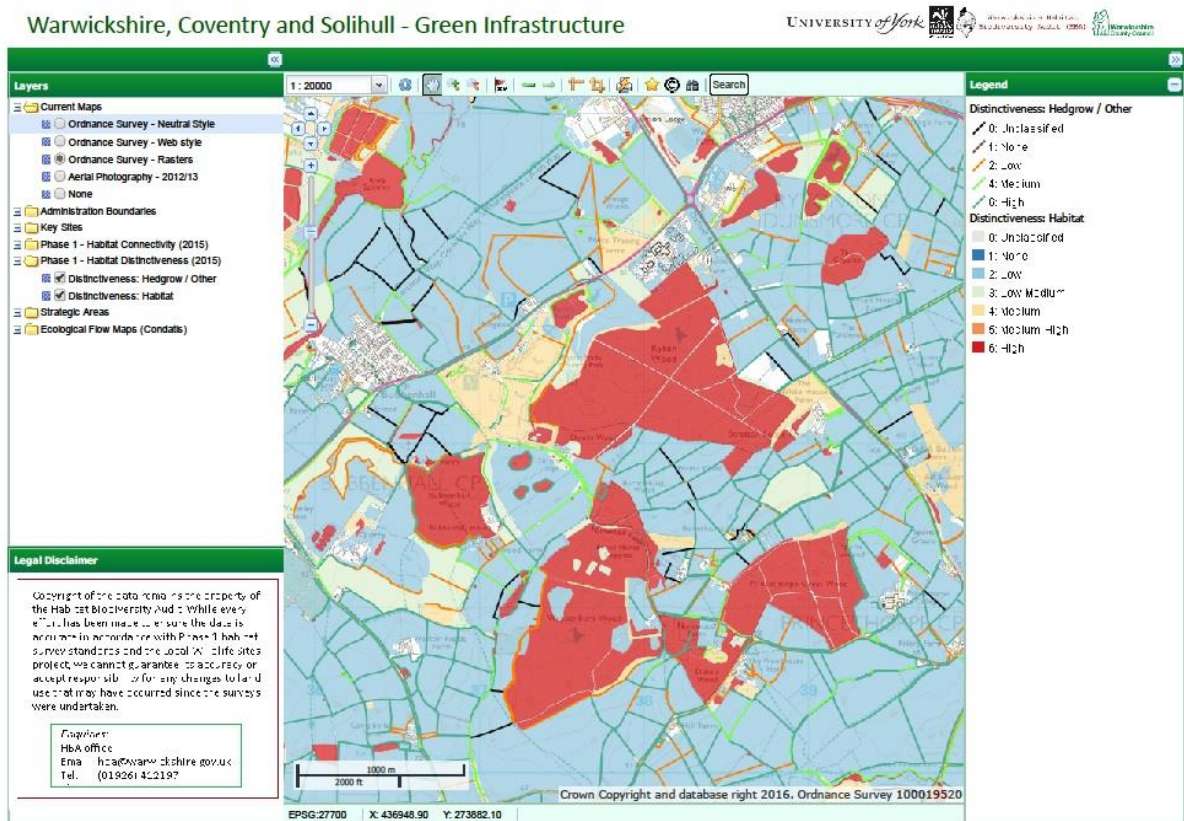
Tip: Turn the 'Linear Feature layer' on after the 'Area Feature Layer' so that both appear on the map in a uniform manner (as shown on the insert).

Phase 1 Habitat Distinctiveness

The Warwickshire, Coventry and Solihull planning authorities were selected by Defra in 2012 - 2014 as one of six national pilot areas to trial Biodiversity Offsetting within the planning system [\[link\]](#). After 2014 Biodiversity Offsetting and the associated Biodiversity Impact Assessment was made mandatory for all minor and major developments and must ensure that they result in no net loss to biodiversity.

 Habitat Distinctiveness

- Distinctiveness (Linear Features)
- Distinctiveness (Area Features)

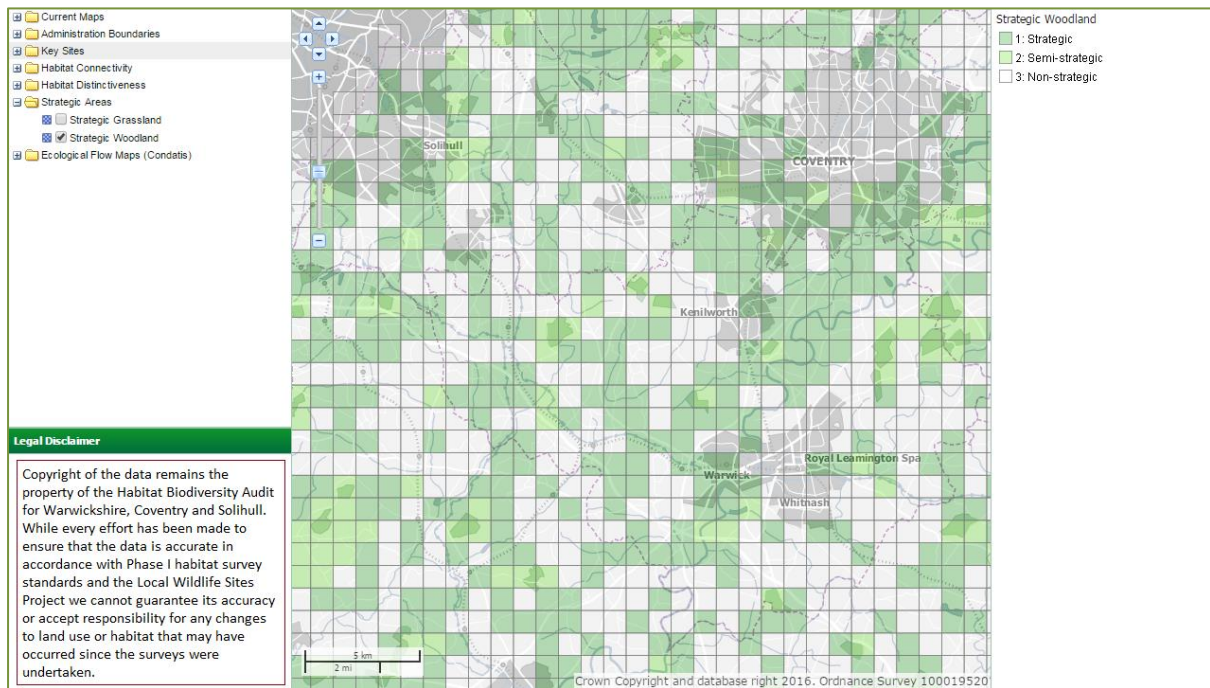


Within the Biodiversity Impact Assessment habitat is 'valued' by a Distinctiveness Factor; for example unimproved grassland has a value of 6 whereas improved grassland is valued as 2.

The habitat distinctiveness web map shows the biodiversity offsetting scores for each type of habitat identified by the Habitat Biodiversity Audit Phase 1 habitat survey mapping of the Warwickshire sub-region. The higher the distinctiveness score the more important is the habitat. The map also provides a quick look at the sub-region to see where important wildlife area and how dispersed they are. The distinctiveness map also shows all the recorded hedgerows scored by distinctiveness.

Strategic Areas

The strategic area grid mapping shows the percentage of grassland and woodland habitat in a 1km². In this instance the percentages reflect the priorities for enhancements and are classified as being Strategic, Semi-strategic and Non-Strategic areas. It works on the principle that if a 1km² has 20% or more woodland or grassland habitat within it, it will function ecologically; i.e. woodland or grassland species are able to move freely within this grid square. Therefore,






- A Strategic area is a 1km² that has 5% to 20% woodland or grassland habitat within it and is a priority area that needs more woodland or grassland habitat to reach the 20% threshold.
- A Semi-Strategic area is a 1km² that has 20% woodland or grassland habitat within it and any extra woodland or grassland habitat would strengthen the ability for species to live and move around this grid square.
- A Non-Strategic Area is a 1km² that has less than 5% woodland or grassland habitat within it and will need so much habitat creation that it is not a priority area. However, if a landowner wants to create habitat in a Non-Strategic Area it would not be discouraged.

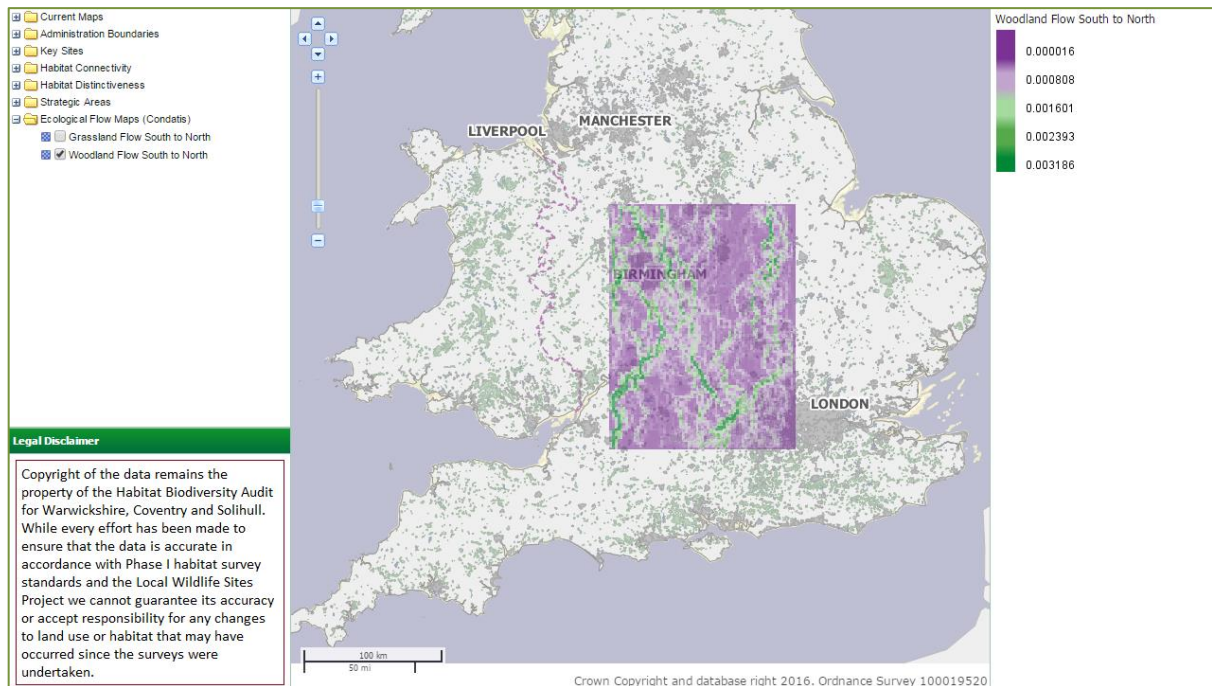
These layers are used to allocate the Spatial Factor within the Defra Biodiversity Offsetting metrics and applied in Warwickshire, Coventry and Solihull to offset sites.

Ecological Flow Maps (Condatis)

Warwickshire County Council acquired habitat data from neighbouring Local Record Centres and the Land Cover data (2007) and used it to predict how woodland and grassland species are likely to move through the country should they need to adapt to climate change. These layers put Warwickshire, Coventry and Solihull into a national context. These layers, with the Habitat Connectivity layers, show the role that each field or hedge plays in supporting species movement and survival.

 Ecological Flow Maps (Condatis)

-  Grassland Flow South to North
-  Woodland Flow South to North



Tip: The green squares show species flows

HBA Project Partners
 Warwickshire Wildlife Trust, Warwickshire County Council, Coventry City Council, North Warwickshire District Council, Nuneaton & Bedworth Borough Council, Rugby Borough Council, Solihull Metropolitan Borough Council, Stratford-upon-Avon District Council, Natural England, Environment Agency
hba@warwickshire.gov.uk tel. 01926 412197