



HEARD



SAFE



HEALTHY



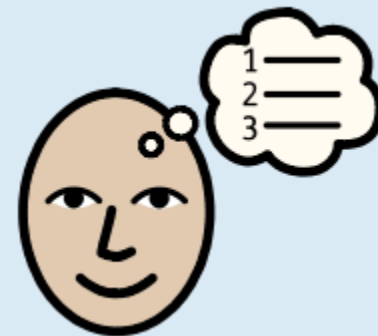
SKILLED



HAPPY

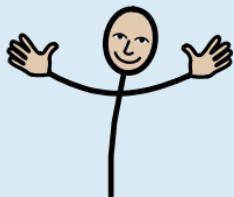
New SEND & Inclusion Strategy Launch - Warwickshire

Parent Carer Webinar
18th March 2025





Welcome



HEARD



SAFE



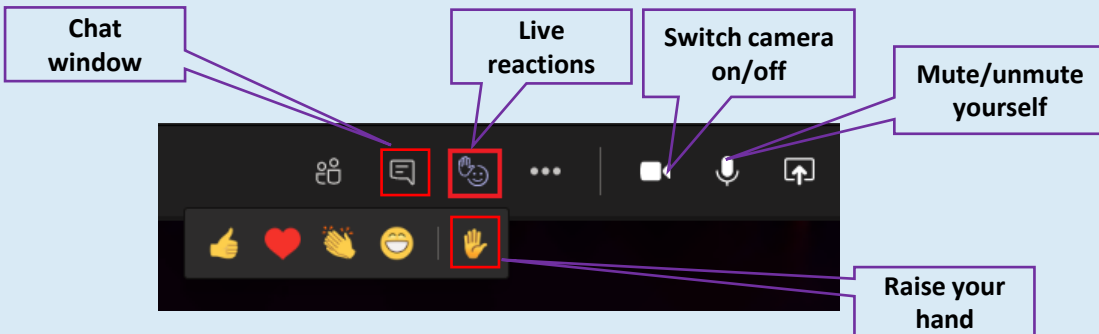
HEALTHY



SKILLED



HAPPY



- During the presentation, please have your microphone on mute
- Feedback
- Teams meeting functions:
 - Please feel free to use Q & A section to post questions
 - Or alternatively use the 'live reactions, raise your hand' feature and the host will invite your question
 - Closed Captions





Questions & Answers



HEARD



SAFE



HEALTHY



SKILLED



HAPPY

- Feel free to post questions during the presentation
- Q&A session will start at the end of the presentation
- All questions, including any not covered during the session, will be answered and posted on Warwickshire County Council's website with a recording of the session and slides: <https://www.warwickshire.gov.uk/get-involved-say>
- We'll circulate details by email to all participants after the webinar, including those who registered but could not attend



Speakers



HEARD

- **Ross Caws**, Head of SEND & Inclusion, Warwickshire County Council



SAFE

Supported by:



HEALTHY

- **Sam Craven**, Voice, Influence & Change Team Manager, Warwickshire County Council



SKILLED

- **Elaine Lambe**, Director, Warwickshire Parent Carer Voice



HAPPY

- **Harpreet Deo**, Strategy & Commissioning Lead, Warwickshire County Council





HEARD



SAFE



HEALTHY



SKILLED



HAPPY

Warwickshire SEND and Inclusion Strategy 2024 – 2029

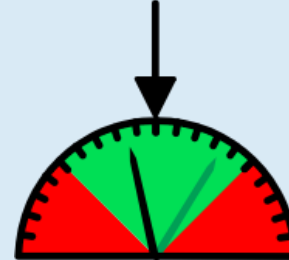


*Ross Caws,
Head of SEND &
Inclusion*





Purpose



HEARD



SAFE



HEALTHY



SKILLED



HAPPY

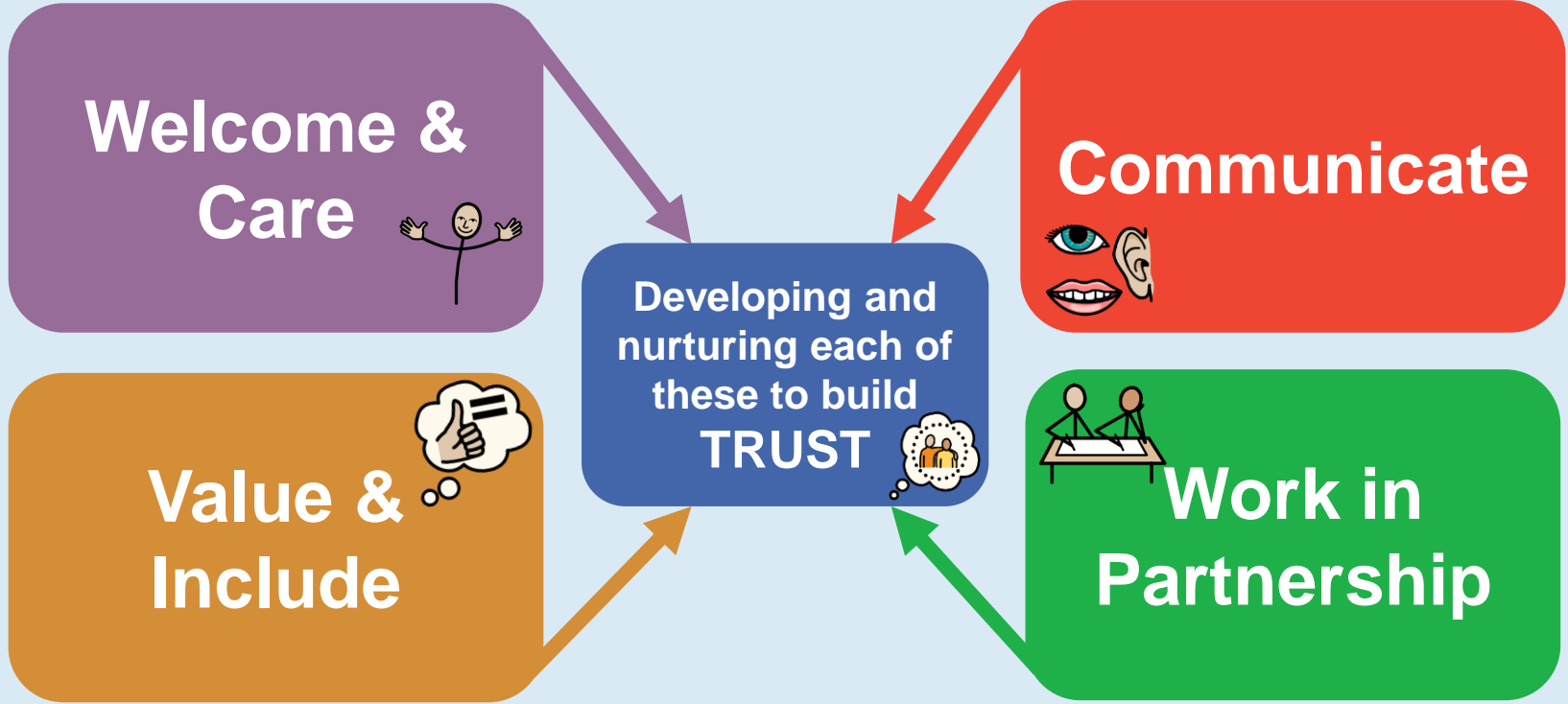
Our aim is for Warwickshire to be a **Child Friendly County** where all children should be **skilled, safe, heard, healthy and happy** and we are committed to **working together as a system** to deliver this vision.

We will encourage **ambition, create opportunity, and support learners** to be the best that they can be.

This strategy sets out **how partners across education, health and social care will work together** to deliver services to **support and continue to make improvements** to meet the needs of children and young people with SEND.



Approach



Challenges



- There is a need to establish more **SEND Resourced Provisions** in Warwickshire.
- **EHC plans are not routinely completed within 20 weeks.**
- In light of **increased complexity and understanding of need**, the cost of provision continues to **exceed allocated budgets**, raising concerns for financial sustainability.
- **EHC plan annual review decisions are not routinely completed within 4 weeks** of the annual review.
- There is a **need for communication** with families, children and young people and internal and external professionals **to be prioritised.**
- Attendance, Emotionally Based School Avoidance and the **factors that influence children and young people not being able to access their education.**
- Children and young people with **multiple vulnerabilities require a multiagency 'team around the child'** response.
- **Waiting list for diagnosis of Autism and ADHD are in excess of 18 weeks**
- **Transitions and preparation for adulthood packages** need to be more realistic for children and young people ahead of post 18.

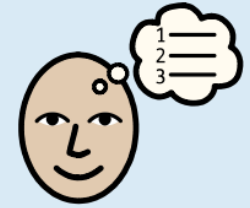
Opportunities



- Continuing to **build on existing co-production with WPCV and IMPACT** and working collaboratively to **embed the Working Together Charter**, so that parent carers and young people are increasingly involved in key strategic meetings and activities.
- Continuing professional **development of our local workforce** to ensure best practice in supporting children and young people with SEND.
- Continuing to **grow the representation of young people with SEND** through their forum, IMPACT, and supporting them to influence areas, according to their priorities.
- **Continuing to provide and co-produce existing communications**, such as the SEND Newsletter and webinars.
- Opportunities to **improve early intervention** for children and young people with SEND.
- **Better transition support** and pathways for 16+ and 18+ including academic options.
- There is **clear SEND & Inclusion Guidance** on the graduated approach in schools, which is supported by a local offer of training and support.
- The **Local Offer Webpages** are maintained and developed through coproduction with WPCV.
- We recognise that every interaction with a family is an opportunity to **build relationships and trust**.
- Move to a **0-19 approach for public health nursing and closer working with community services** to improve the offer.
- Improving the local SEND system in line with the **Delivering Better Value Programme**.
- Development of the **Families First for children programme**, the Warwickshire Pathfinder.



SEND & Inclusion Strategy



The SEND and Inclusion Strategy 2024-2029 was approved by Cabinet in December 2024 and by the Integrated Care Board in January 2025.

We have 6 key priorities, 3 of which are directly linked with the Education Strategy:

- 1) **SEND provision is commissioned in accordance with children's needs, professional advice, and best practice.**
- 2) **Increase the level of Specialist Resourced Provision available for those who need it.**
- 3) **Education Health Care (EHC) needs assessments, plans, appeals and annual reviews meet statutory requirements.**
- 4) Promote inclusive practice
- 5) Preparation for adulthood
- 6) Improve workforce development and collaborative working

The SEND & Inclusion Partnership Board will oversee the monitoring of this strategy and the accompanying implementation plan.



1) SEND provision is commissioned in accordance with children's needs, professional advice, and best practice.



Warwickshire's local offer of education provision



593 - Early Years - Private, Voluntary, Independent (PVI) providers - 96% Good or better Ofsted rating

265 - Active Childminders - 96% Good or better Ofsted rating

286 - Providers of Childcare on non-domestic site - 95% Good or better Ofsted rating



6 - Maintained nurseries

196 - Primary Schools/Academies

19 - Primary Schools with maintained nursery classes

76 - Primary Schools that lead childcare on site

37 - Maintained Secondary Schools/Academies



25 - Resourced Provision

11 - Special Schools/Academies

28 - Schools on our framework for Independent Specialist Education Placements, 11 of which are in Warwickshire. Overall, we fund places at around 80 independent specialist schools

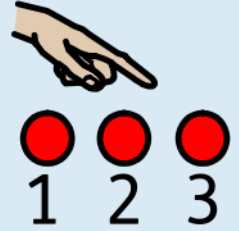
17 - Providers on our Framework for Alternative Education reintegration placements



1 - 6th Form College

3 - Post 16 Further Education colleges

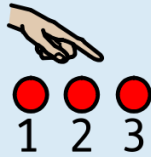
October school census data – SEN Support and EHC plans (County)



Total	District and Borough	Children with no SEN		Children with SEN Support		Children with an Education, Health and Care Plan (EHCP)		Total SEND population (Children with SEN Support or an EHCP)	
		Number	Percentage of numbers on roll	Number	Percentage of numbers on roll	Number	Percentage of numbers on roll	Number	Percentage of numbers on roll
		Total number of children on roll							
	North Warwickshire	11024	80.9%	1625	14.7%	479	4.3%	2104	19.1%
	Nuneaton and Bedworth	19894	78.8%	2865	14.4%	1348	6.8%	4213	21.2%
	Rugby	18893	82.5%	2528	13.4%	784	4.1%	3312	17.5%
	Stratford on Avon	21109	82.6%	2979	14.1%	698	3.3%	3677	17.4%
	Warwick	19643	82.2%	2649	13.5%	853	4.3%	3502	17.8%
	Warwickshire	90563	81.4%	12646	14.0%	4162	4.6%	16808	18.6%



Warwickshire



CYP with an EHCP

6987

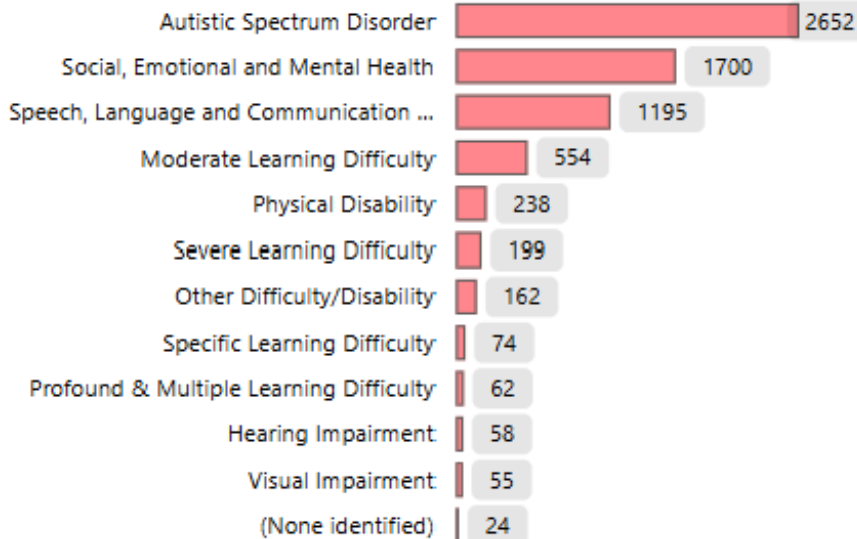
Version: 0.1

Ref: EDU-SEND-EHMAP

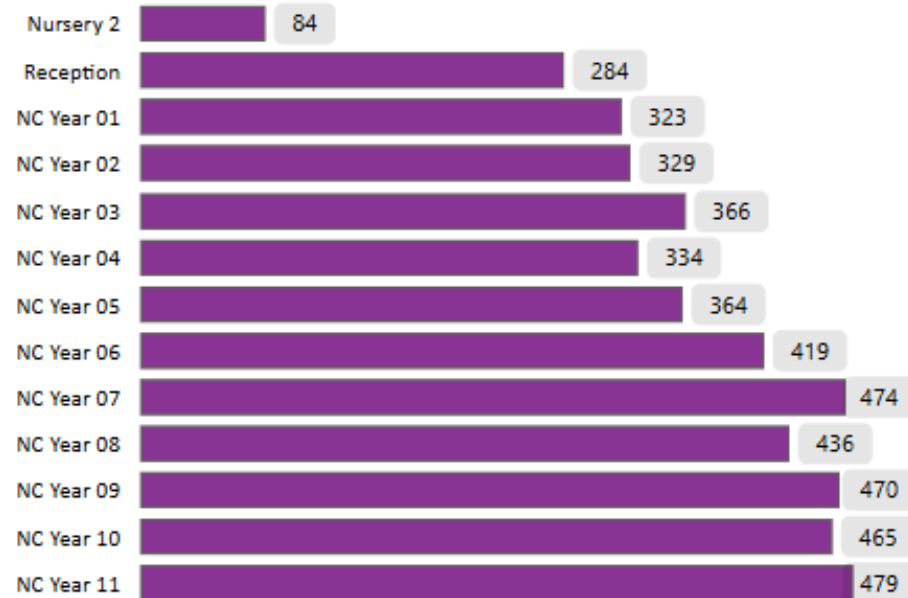
Status: In development

DAP: Live

CURRENT CYP WITH AN EHCP, BY PRIMARY NEED

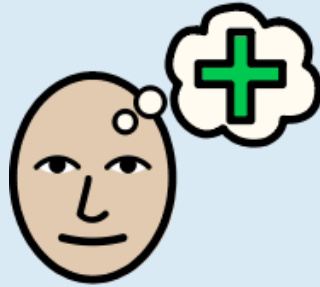


CURRENT CYP WITH AN EHCP, BY NC YEAR



Commissioning services and schools

- Service based commissioning (e.g. CAMHS)
- School based commissioning (e.g. special schools)



Top-up funding – Overall Position



Item	Budget	Forecast
Mainstream schools	£19.200m	£28.697m
Resourced Provision	£2.954m	£2.984m
State funded special schools	£22.549m	£26.227m
Independent specialist provision	£25.822m	£36.731m

2) Increase the level of Specialist Resourced Provision available for those who need it



Resourced Provision



Resourced Provisions are where **places are reserved at a mainstream school** for pupils with a specific type of SEN, taught mainly within mainstream classes, but **requiring a base and some specialist facilities** around the school.

The local authority is responsible for all children with an EHC plan and therefore is the admissions authority for each resourced provision. **It is mainstream provision**, but because of the **extra resources** many see resourced provision as a **bridge between mainstream and special schools**.

The rationale is **not to remove children from special schools** into SEND resourced provisions. Instead, the establishment of **SEND resourced provisions will provide broader options in decision making for future requests for education provision**. In future, there will be greater opportunity to place children at SEND resourced provisions within mainstream **in accordance with their needs and the provision set out in the child's EHC plan**.

<https://www.warwickshire.gov.uk/school-admissions-appeals/send-admissions-specialist-settings/2>



Resourced Provision



Countywide the ambition is for 529 resourced provision places

To reach the target of 529 places, including existing provision, the proposal is:

- Each **primary consortia** has a **minimum of two** SEND resourced provisions and **8** places in each
- Each **secondary area** has a **minimum of three** SEND resourced provisions, **20** in each
 - proposed **three in Rugby, four in Central, four in Stratford and five in North, Nuneaton & Bedworth.**
- This would total **600 places at 50 bases** (assuming those with more than two SEND resourced provisions in consortia remain). This would require an **additional 31 bases to current provision.**



3) Education Health Care (EHC) needs assessments, plans, appeals and annual reviews meet statutory requirements



Current pressures in the system



- **2,049 EHC needs assessment requests** in 2024 (2,007 in 2023, 1,349 in 2022, 690 in 2021)
- **1,115 new EHC plans issued** in 2024 (751 in 2023, 661 in 2022, 492 in 2021)
- A higher percentage of **EHC needs assessments** are being **agreed** - up from a low of **50% to 65%**
- **6,987** children and young people **with EHC plans**
- SEND staffing at the local authority **funded from Council tax**
- In September, **SENDAR reorganised** to create **assessment** and **review** teams
- As a result, the percentage of **annual reviews with a decision within 4 weeks** has increased

Current pressures in the system



- However, there are **delays on issuing new EHC plans** with a current backlog
- To address this:
 - We have already **commissioned further associate and locum EPs** to carry out more statutory assessment
 - Bringing in **agency staff into SENDAR** assessment team for January-March 2024 to address backlog
 - **Permanent increase in staffing in SENDAR** with effect from 1st April
 - From January established a **'redesign' process to make improvements**
 - **Funding to schools is backdated** to the due date

4) Promote inclusive practice

Continuing to embed the School Inclusion Charter



5) Preparation for adulthood

Supported Internships and increase independent living skills

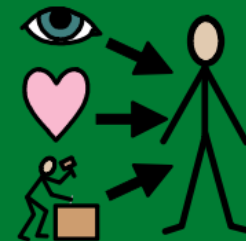


6) Improve workforce development and collaborative working

Extension of the Working Together Charter being adopted across Social Care



Live Feedback Form for SEND



Progress starts with listening, which aids understanding and enables better solutions.



WARWICKSHIRE
PARENT CARER VOICE



**JOIN YOUR LOCAL
PARENT CARER FORUM**

Are you a parent or carer of a child or young person aged 0-25 with special educational needs and/or disability (SEND)?

Get Involved

Parent Carers & Young People



**YOUR VIEWS AND
EXPERIENCES MATTER**

Warwickshire Parent Carer Voice is a parent carer led organisation working to ensure that every parent carer in Warwickshire feels that their views and experiences matter, and gets their voice heard to develop and improve services for children and young people with special educational needs and/or SEND.

We welcome any parent carer who lives (or uses services) in Warwickshire, with a child or young person (aged 0-25) regardless of their disabilities (no diagnosis necessary) to join us.



**Join Here
ctrl & click**

Tell us your experiences | Fill in our surveys | Join our meetings
Spread the word | Join us as a Member

Visit our website: www.warwickshireparentcarervoice.org
or email hello@warwickshireparentcarervoice.org for more information

iMPACT

Young People with Special Educational Needs and/or Disabilities have a voice to improve SEND Services, to help Warwickshire become more child friendly.

Let us know if you are interested in getting involved:

Scan the QR code



www.warwickshire.gov.uk/ypvoice

**Join Here
ctrl & click**



iMPACT



Get involved and have your say



Warwickshire Parent Carer Voice: warwickshireparentcarervoice.org/join

IMPACT (Young People's Forum for SEND): www.warwickshire.gov.uk/ypvoice

Feedback on SEND Services: www.warwickshire.gov.uk/sendfamilyfeedback



Contact us

Email: sendchange@warwickshire.gov.uk





THANK
YOU

Thank you for listening



Find out more

SEND & Inclusion Strategy 2024 – 2029: www.warwickshire.gov.uk/sendstrategy

Easy Read Version of SEND & Inclusion Strategy – On its Way

Local offer webpages: www.warwickshire.gov.uk/send

Working Together Charter: www.warwickshire.gov.uk/sendcharter

School Inclusion Charter: www.warwickshire.gov.uk/inclusioncharter



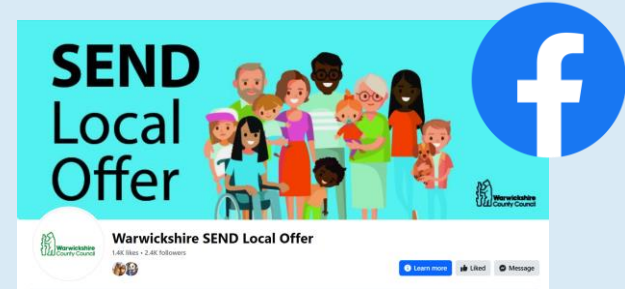
Get the latest updates



Sign up to our monthly SEND Newsletter to get the latest progress on the Strategy plus other news, events and important updates on SEND in Warwickshire:

Visit: bit.ly/wccsendnews

or scan the QR code 



Follow our Local Offer Facebook page for regular updates on support for parents and carers in Warwickshire as well as SEND events and activities in the local area:

www.facebook.com/WarksLocalOffer



There is an opportunity to give feedback using this link for 14 days from 18th March 2025



Join at [menti.com](https://www.menti.com) | use code 6969 9792

<https://www.menti.com/alacx1o4kkjk>

