

HOLIDAY ACTIVITIES & FOOD



***ANNUAL REPORT
2023/24***



Funded by



Department
for Education



CONTENTS

INTRODUCTION

1

OUR PROVIDERS

2

HEADLINE STATS

3

KEY STATS

4

KEY
ACHIEVEMENTS

5

SEND

6

SEND FAMILY
EXPERIENCES

7

MARKETING &
COMMUNICATIONS

8

PROGRAMME
COORDINATION

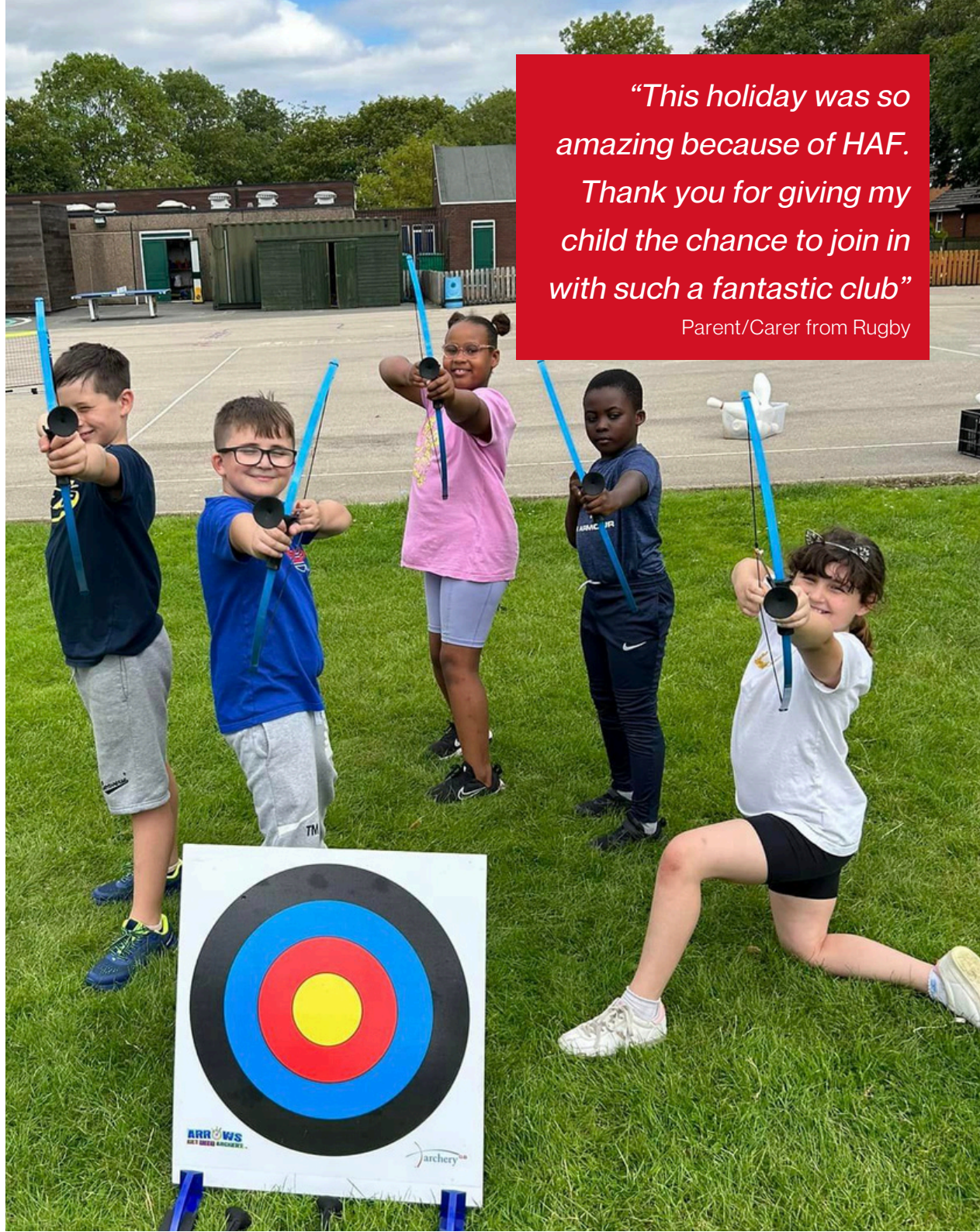
9

FEEDBACK &
COMMUNICATIONS

10

FUTURE PLANNING

11



"This holiday was so amazing because of HAF. Thank you for giving my child the chance to join in with such a fantastic club"
Parent/Carer from Rugby

INTRODUCTION

The Holiday Activities and Food (HAF) provision in Warwickshire is for children who are in full time education from **Reception to Year 11 (inclusive)**, who receive **benefits-related free school meals (FSM)**. The programme offers valuable support to families on lower incomes, giving young people the opportunity to access activities with a meal provision over the three main school holidays in **Winter, Spring and Summer**.

Funded by



Department
for Education



Watch the
Warwickshire HAF
video, filmed
during Summer
HAF 2023, [here!](#)

*“Such a great service.
Really helpful in the cost
of living crisis and
struggling families and
single parents. Keep up
the good work HAF!”*

Parent/Carer from North
Warwickshire

OUR PROVIDERS

The **Holiday Activities and Food (HAF)** provision in **Warwickshire** relies on a network of providers offering a wide variety of activities - from multi-sports, to animal care and (almost) everything in between.



Number of providers operating in Warwickshire overall across Easter, Summer and Winter HAF 2023/24

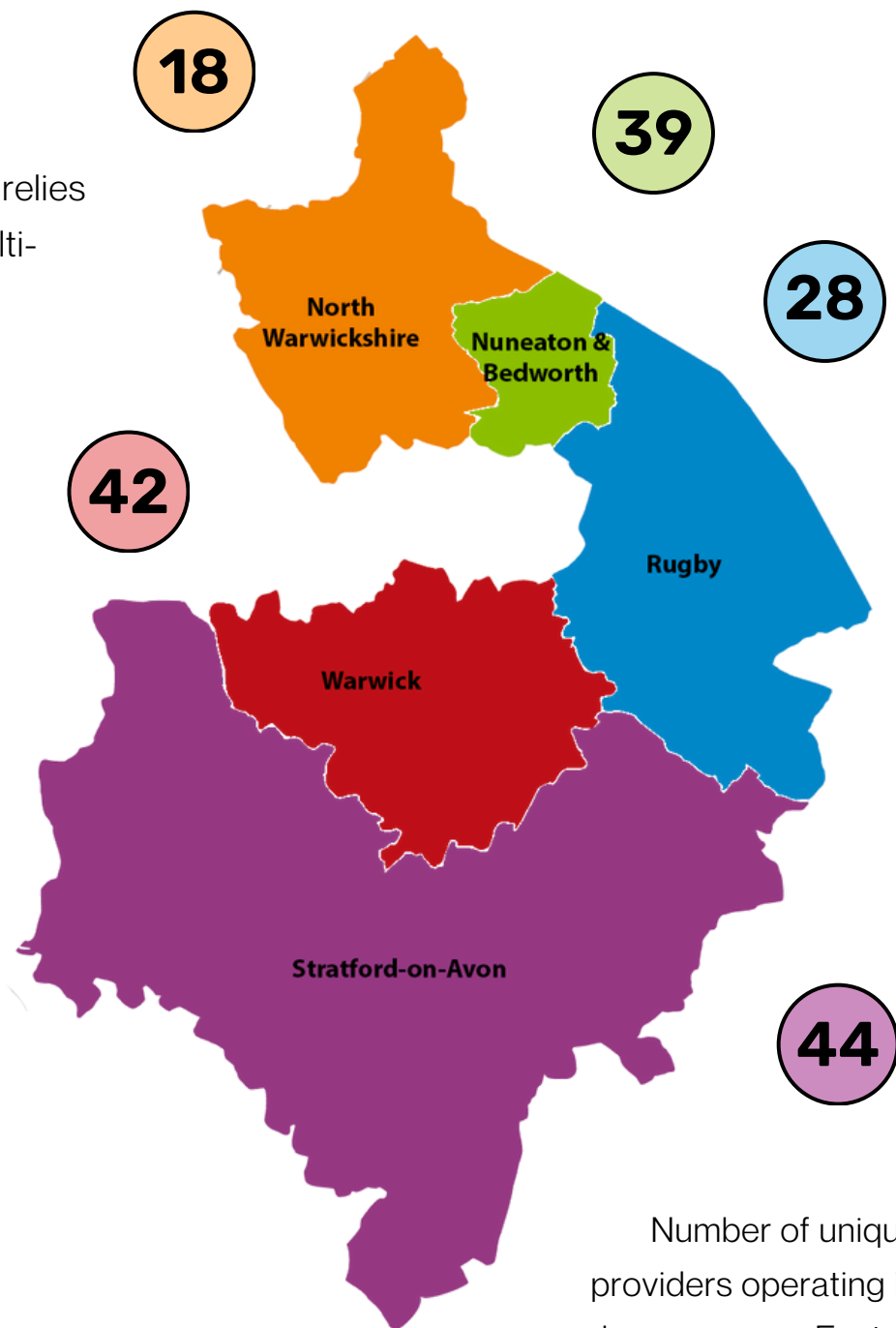
National HAF Provider of The Year Awards

We are delighted that one of our incredible providers, **Spark Youth Music**, was named as the regional winner for the Midlands at the HAF 2024 Awards. They will be attending an award ceremony at the Houses of Parliament in June 2024, where one of the 9 regional winners will be named as the national HAF provider of the year! [You can watch their Summer HAF bands performing by clicking here.](#)

...so much more than
a musical journey



Clare & Sam
from Spark
Youth Music



Number of unique providers operating in each area across Easter, Summer and Winter HAF 2023/24

HEADLINES FROM 23/24

Spring

Monday 3rd - Friday 14th
April 2023

10,283

HAF spaces available

72.8%

Programme occupancy

7,486

HAF bookings made

2,451

Distinct young people
accessing HAF activities

89.4%

Overall attendance percentage

Summer

Wednesday 26th July - Friday
1st September 2023

36,248

HAF spaces available

95.3%

Programme occupancy

34,531

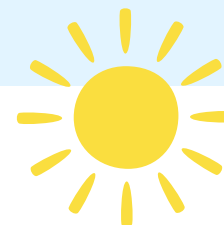
HAF bookings made

4,631

Distinct young people
accessing HAF activities

85%

Overall attendance percentage



Winter

Tuesday 2nd - Friday 5th
January 2024

6,799

HAF spaces available

91.7%

Programme occupancy

6,233

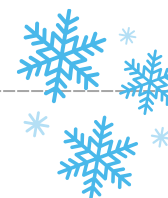
HAF bookings made

2,422

Distinct young people
accessing HAF activities

88.2%

Overall attendance percentage

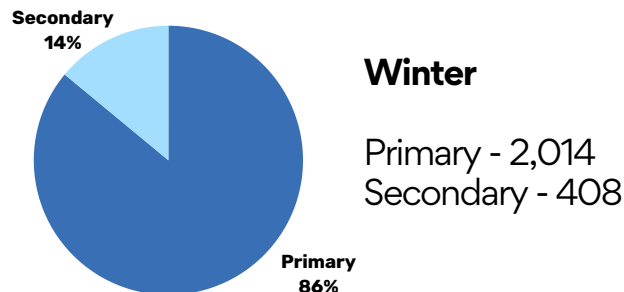
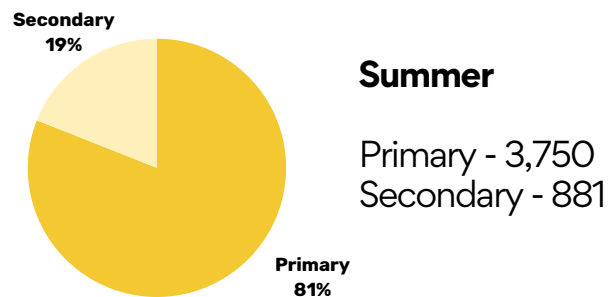
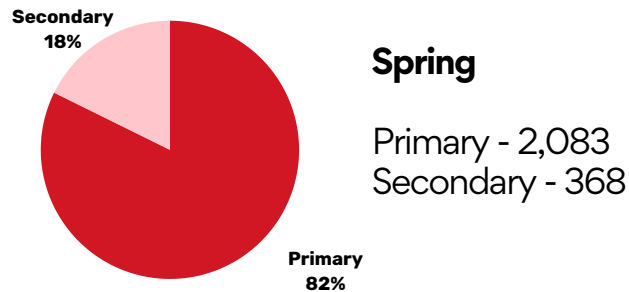


KEY STATS

The statistics on this page relate to the 3 delivery periods over 2023 - **Spring (April 23), Summer (July - August 23) and Winter (January 24).**

48,250

number of meals served at HAF sessions
this year



proportion and number of primary versus secondary age children who have participated this year

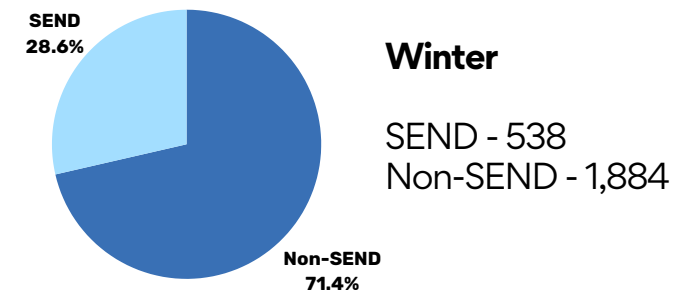
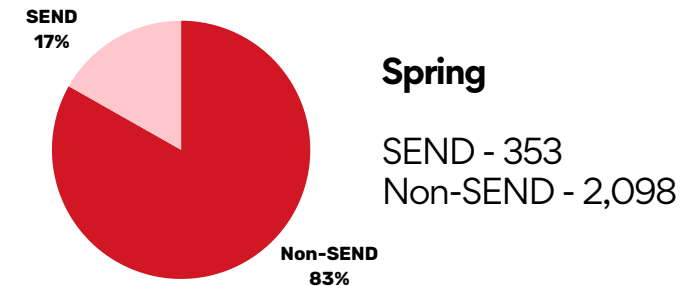
11,968

Spring - 1,536 hours +
Summer - 8,640 hours +
Winter - 1,792 hours +

Hours of activity delivered at HAF-funded activities this year if all providers offered 4 hours only. In reality, many of our providers offer longer sessions.

253

number of quality assurance visits
completed by the HAF team this year



proportion and number of SEND (self-described) versus non-SEND children who have participated this year

KEY ACHIEVEMENTS

Over the three delivery periods of 2023, the **Warwickshire HAF programme continually developed and improved in many areas.**

SEND

Our providers are now submitting more additional funding requests for 1-to-1 support than ever before. This indicates that parents/carers are more comfortable disclosing their child's needs. We also introduced several new SEND-specific providers into our programme over the past year who can cater for those with more complex needs. Our SEND Family Experiences have also been a significant step in improving expanding our offering to the SEND community.

Attendance

Non-attendance at booked sessions is a challenge which carries a significant financial cost. For Winter HAF we trialed a 10% overbooking policy with our providers. This successfully reduced the impact of non-attendance. Ahead of each delivery we also check every booking to ensure the number of sessions being booked does not exceed allocation (4 for Spring, 16 for Summer and 4 for Winter).

Secondary provision

Our secondary provision has expanded over the last year through our partnerships with local youth organisations and charities like Young Carers. We also partner with internal Warwickshire County Council teams such as Targeted Youth Support and Refugee Resettlement to offer bespoke activities and food to the secondary age demographic.

Geographical distribution

Warwickshire is a large county with several areas of rurality. This year we have focused on expanding into areas where there was previously a lack of HAF provision and have successfully launched in several previously untapped locations.

"It's a great initiative and a big help for struggling parents and carers."

Parent/Carer from Nuneaton & Bedworth Borough





SEND

"Having the HAF code makes our life as a family so much better. To be able to use a code and book them on means they can keep the routine without causing financial concerns."

Parent/Carer from Rugby

All Warwickshire HAF providers are expected to be as inclusive as possible. Many providers have additional staff which they can deploy for 1-to-1 support as required. We provide **additional funding** in these circumstances. For young people who need quieter, or more specialised activities, we have a number of **SEND-specific activities on offer each holiday. In Summer 2023 we also launched SEND Family Experiences** for the first time and these have been a massive success.

Spring

5

Summer

7

Winter

5

Number of specialist, SEND-specific providers operating overall across Easter, Summer and Winter HAF 2023/24

£87,256

Amount spent on **additional funding requests** during Spring, Summer and Winter HAF this year. This **funding supports 1-to-1 staffing requests.**

Applications were made by **32 individual providers.**

Our network of SEND-specific providers

includes: [ELAN School of Movement](#), [Lucky Tails Alpaca Farm](#), [MessyBeanz](#), [MHR](#), [Funstar Education](#), [Flourish at the Farm](#) and [SPARK Youth Music](#). Click on their name to find out more about them.

This year, we approved the following number of additional funding requests.

Where a provider attracts a higher number of SEND bookings, we adapt their funding agreement to account for a number of dedicated SEND spaces which then removes the need of an additional funding request.

Spring - 40
Summer - 51
Winter - 33

SEND FAMILY EXPERIENCES

Our SEND Family Experiences were first offered in Summer 2023. These experiences are **aimed at young people who are in receipt of benefits-related FSM and have an EHCP**, plus their families. Each experience counts as 1 credit within their allocation for the holiday period.

Number of families
356

Number of young people
536

Number of experiences offered
15



Watch the video we filmed at one of our family experience locations - Stratford Butterfly Farm

Family Experiences offered this year include:

- Twycross Zoo
- Red Kangaroo Trampoline Park
- Family Swimming
- British Motor Museum
- Stratford Butterfly Farm
- MAD Museum
- Macready Theatre, Rugby
- Warwick Arts Centre



"I think your programme and team are amazing! Giving children the opportunity to have a day out is truly amazing"

Parent/Carer from Stratford District

MARKETING & COMMUNICATION

Over the last year there have been significant changes made to our marketing and communication strategies.

Our **website relaunched** in June 2023 and was **visited 58,362 times** from launch to January 2024.

Welcome to Warwickshire HAF!



The Holiday Activities and Food (HAF) Programme is funded by the Department for Education (DfE) to provide young people who are in full-time education (Reception to Year 11) and eligible for benefits-related free school meals with access to enriching activities and meals, for free, during the three main school holidays - Winter, Spring and Summer.

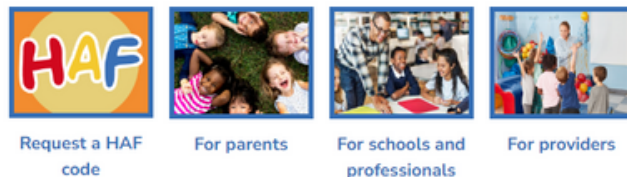
Winter HAF: Monday 2 January - Friday 5 January 2024 (maximum of 4 sessions) - [check out the review \(PDF, 1 MB\)](#) at

Spring HAF: Monday 25 March - Friday 5 April 2024 (maximum of 4 sessions)

Coming soon - Summer HAF: Monday 22 July - Friday 30 August 2024 (maximum of 16 sessions)

Visit our dedicated areas below to learn more about the HAF programme in Warwickshire.

If you want more information about non-HAF holiday provision and/or family support, visit Warwickshire's Children and Families webpages at:



We published our **new HAF leaflet** this year and copies have been sent to all Warwickshire schools as well as taken to relevant outreach events across the county. All HAF clubs also receive digital copies of **signposting leaflets for support services** our brilliant **Family Information Service (FIS) helpline**.

Since Spring 2023 we have **published reports following each delivery period**. You can view these by clicking here: **Spring, Summer & Winter**.

"Such a great service. Really helpful in the cost of living crisis and struggling families and single parents. Keep up the good work HAF!"

Parent/Carer from Warwick District

We began publishing **activity brochures** ahead of Winter delivery this year. The Winter document was **viewed 6,251 times** whilst live online.



We work alongside FIS to promote the HAF programme on social media. This year, our posts have been **viewed 142,493 times on Facebook and Twitter/X**.

PROGRAMME COORDINATION



"Thanks for the opportunity, my children had an amazing time, something we couldn't of afforded under normal circumstances. Please allow it carry on, it's wonderful."

Parent/Carer from Warwick District

Programme expenditure

Funding of £1,759,610 was made available to Warwickshire County Council by the Department for Education to delivery the Holiday Activities & Food programme during the 2023/24 financial year. The total programme expenditure for 2023/24 was £1,730,882. This included a proportion of programme funding allocated to programme administration, resources and staffing costs. This value was £150,671 within the overall programme spend. All other costs were made to approved activity providers to offer funded HAF places in our three delivery periods.

HAF Programme team

Within Warwickshire, we have a team of 3 full time staff members that work within the HAF programme. This consists of a team manager and two programme co-ordinators, with roles split to cover different geographical areas of Warwickshire. The HAF team are part of Warwickshire's Family Information Service (FIS) and work alongside the team in assisting with any telephone calls or emails received with queries on the programme.

Non-FSM

Up to 15% of funding can be allocated to young people who are not in receipt of benefits-related FSM, but are still facing a significant financial barrier. In Warwickshire, this funding is used for 'closed provisions' that are delivered to existing cohorts of vulnerable young people, and for our non-FSM HAF codes. These HAF codes are issued on a professional referral basis and at least one of the following criteria must apply, as well the financial barrier element:

- Allocated Family Support or Social Worker.
- Open Early Help Plan.
- Acts as a Young Carer.

FEEDBACK & COMMENTS

"We loved the offer for a day out as a family to an inclusive setting - after a hectic year this was extremely appreciated. Thank you very much for the opportunity."

Parent/Carer from the Stratford District

"We were so grateful to run a summer workshop for these incredible young people. What an inspiring group of kids. They were all so welcoming"

Provider working at a refugee resettlement site

"My child was very happy with the food, she loved and ate everything she was given... and had extras!"

Parent/Carer from North Warwickshire

"It's a fantastic scheme which bring new families to my sessions and helps a small business. Thank you."

Provider from Nuneaton & Bedworth Borough

"I genuinely don't think I could manage without the HAF sessions. Completely invaluable for both myself and my children"

Parent/Carer from the Rugby Borough

"Having the HAF code makes our life as a family so much better. To be able to use a code and book them on means they can keep the routine without causing financial concerns."

Parent/Carer from the Stratford District

FUTURE PLANS

Special Educational Needs & Disabilities (SEND)

Over the next year we will continue to expand our SEND activity offer. With a specific focus on special schools, we aim to have at least one SEND-specific activity listed in each part of Warwickshire. This is on top of our SEND Family Experiences (which continue to grow in variety) and our investment in additional funding for 1-to-1 staffing at mainstream activities.

Food

We will continue to ensure all meals and snacks offered at activities meet school food standards. We will also ask providers to incorporate some form of nutritional education into their programme. This could be cooking, quizzes or games. We're also developing an activity and nutrition booklet which will go to all HAF activity attendees prior to Winter HAF 2024.

Youth engagement

Our ambition is to have a more balanced split between primary and secondary HAF activity attendees. To achieve this, we will develop our partnerships with local youth organisations to deliver HAF activities to the existing cohort of young people. We will also continue working with internal council teams like Targeted Youth Support and the Flexible Learning Team. Finally, our links to Warwickshire Pride Youth and Young Carers continue to flourish.

Goals for Spring, Summer & Winter HAF 2024

Budget management

With rising costs affecting virtually every area of the programme, it is important that we manage our budget effectively to ensure the programme is both cost-effective and fit for purpose. With this in mind, we are working with all providers to ensure their food costs and activity costs are calculated correctly and offering support to source more affordable options where required.

Attendance

Introducing a 10% overbooking policy for Winter HAF 2023 has been successful and therefore we will continue this into 2024. We aim to reduce spending on booked but unattended HAF spaces via this policy so that the funds can be reinvested into other elements of our programme. We will continue to closely monitor all bookings prior to delivery as we have found that this is an effective way of reducing overbookings (i.e. >4 in Spring/Winter or >16 in Summer) and therefore reducing non-attendance.

Signposting

We are working with our providers to ensure all relevant signposting is delivered to families taking part in HAF at appropriate times. In addition to the HAF flyer which describes the programme, we aim to develop an activity booklet that combines nutrition, activities, wellbeing and support service signposting. Moreover, our providers are strongly encouraged to develop their own take-home materials for families and include information about the support available to them in Warwickshire.

hafprogramme@warwickshire.gov.uk

www.warwickshire.gov.uk/haf



@WarwickshireFIS



@WarksFIS



Funded by



Department
for Education

