

# 2 HELP



**Find out how you may be able to access a 2help funded childcare place for your 2 year old**

- up to 15 hours a week
- 38 weeks a year

## YOU MAY BE ABLE TO ACCESS A 2HELP FUNDED CHILDCARE PLACE FOR YOUR 2 YEAR OLD FROM THE TERM AFTER THEIR SECOND BIRTHDAY, IF YOU ARE RECEIVING:

---

- Income Support
- Income based Job Seekers Allowance
- Income-related Employment and Support Allowance
- Support under part VI of the Immigration and Asylum Act 1999
- The guaranteed element of Pension Credit
- Universal Credit if your household earned income is less than £15,400 a year after tax
- Child Tax Credit, Working Tax Credit (or both), and your household income is less than £16,190 a year before tax

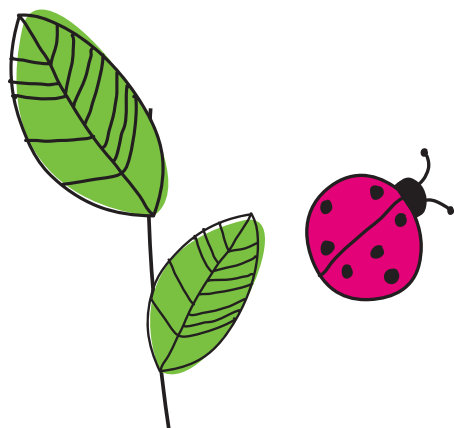
OR

- The child is being looked after by the local authority
- The child has left care through special guardianship or an adoption or child arrangements order
- The child has a current statement of Special Educational Need, or an Education, Health and Care Plan
- The child qualifies for Disability Living Allowance

OR

If your immigration status says you have 'no recourse to public funds', you may be able to access a 2Help funded childcare place for your 2 year old from the term after their second birthday, if you:

- live in England and your annual household income is no more than:
  - o £26,500 for families outside of London with one child
  - o £30,600 for families outside of London with two or more children
- have no more than £16,000 in savings or investments



## WHEN WILL MY CHILD BE ELIGIBLE?

---

Children usually have a 2Help funded entitlement place from the start of the school term after their second birthday.

CHILDREN BORN BETWEEN:	FUNDED PLACES START FROM:
1st January and 31st March	The start of the <b>Summer Term</b> following their 2nd birthday
1st April and 31st August	The start of the <b>Autumn Term</b> following their 2nd birthday
1st September and 31st December	The start of the <b>Spring Term</b> following their 2nd birthday

## HOW TO APPLY:

---

You can apply online at [www.warwickshire.gov.uk/childcarecosts](http://www.warwickshire.gov.uk/childcarecosts)

or using the QR code:



- Your application is checked for eligibility using the Government's Eligibility Checking System (ECS)
- If you are eligible, a funding confirmation letter, detailing your EY Voucher Code, will be emailed or posted to you to confirm a funded place
- You will also be sent a list of childcare settings in your area who offer funded 2Help places
- You will need to show your chosen setting your funding confirmation letter and give them your EY Voucher Code
- If your eligibility cannot be confirmed, you will be asked for supporting evidence

## HOW DO I CLAIM THE 2HELP FUNDED ENTITLEMENT?:

---

The 2Help funding is paid directly to the Early Years Provider your child attends. They will claim the funding on your behalf when you complete a Parent/Guardian Declaration Form (PDF) with them.

## EARLY YEARS PUPIL PREMIUM

---

The Early Years Pupil Premium (EYPP) is additional funding that can be claimed by Early Years Providers who have children where parents are in receipt of one of the qualifying benefits or credits or one of the other qualifying criteria is met.

A child will be eligible for the Early Years Pupil Premium (EYPP) if their parents are in receipt of one of the following benefits or credits:

- Income Support
- Income-based Jobseekers Allowance
- Income-related Employment and Support Allowance
- Support under Part VI of the Immigration and Asylum Act 1999
- The guaranteed element of State Pension Credit
- Child Tax Credit, but not Working Tax Credit, with an annual gross income of no more than £16,190
- Working Tax Credit run-on – paid for 4 weeks after parents stop qualifying for Working Tax Credit
- Universal Credit with an annual net household income equivalent to and not exceeding £7,400, assessed on up to three most recent Universal Credit assessment periods

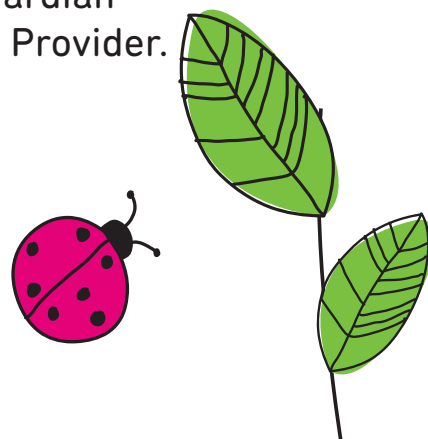
OR the child has:

- Been Looked After by the local authority for at least one day
- Been adopted from care
- Left care through Special Guardianship
- A Child Arrangement Order

## HOW TO CLAIM

---

To claim for the Early Years Pupil Premium (EYPP), you must fully complete the EYPP application section on the Parent/Guardian Declaration Form (PDF) given to you by your Early Years Provider.



## DISABILITY ACCESS FUND

---

Children may be eligible for Disability Access Fund (DAF), if they meet the following criteria:

- The child is in receipt of Disability Living Allowance (DLA)  
And
- The child receives the 2Help entitlement funding

## HOW TO CLAIM

---

To claim for the Disability Access Fund (DAF), you must fully complete the DAF application section on the Parent/Guardian Declaration Form (PDF) given to you by your Early Years Provider.



# FREQUENTLY ASKED QUESTIONS

## CHARGES

---

The 2Help entitlement funding is intended to deliver 15 hours a week of funded, high quality, flexible childcare. Parents may be charged fees for meals, other consumables, additional hours or additional services.

## CAN I CLAIM THE EARLY YEARS ENTITLEMENT AT MORE THAN ONE EARLY YEARS PROVIDER?

---

Yes, up to a maximum of 2 sites in one day.

## CAN I CHANGE SETTINGS?

---

Funding will normally be paid for the whole term to the provider the child attends on Headcount Day. If your child moves before or after the Headcount Day, you will need to speak to your Early Years Provider to find out if they will agree to move any funding to the other provider.

## YOUR INFORMATION RIGHTS

---

To see how we use your personal data and what your information rights are please read our customer privacy notice at [www.warwickshire.gov.uk/privacy](http://www.warwickshire.gov.uk/privacy) which includes contact details if you have a complaint about your information rights. For general enquiries, contact Warwickshire County Council customer services on 01926 410410.

For 2Help funding enquiries please contact the Early Years Entitlements Team

Tel: 01926 742218

Email: [2help@warwickshire.gov.uk](mailto:2help@warwickshire.gov.uk)

Website: [www.warwickshire.gov.uk/childcarecosts](http://www.warwickshire.gov.uk/childcarecosts)

For more information about childcare providers in Warwickshire please contact the Family Information Service

Tel: 0800 408 1558

Email: [fis@warwickshire.gov.uk](mailto:fis@warwickshire.gov.uk)

Website: [www.warwickshire.gov.uk/fis](http://www.warwickshire.gov.uk/fis)

