



CW Business: Start, Grow and Scale



From 2019 to 2023, the CW Business: Start, Grow and Scale programme, totalling £3.6m, has provided intensive support to businesses in Warwickshire to encourage growth in the local economy.

Match Funding:

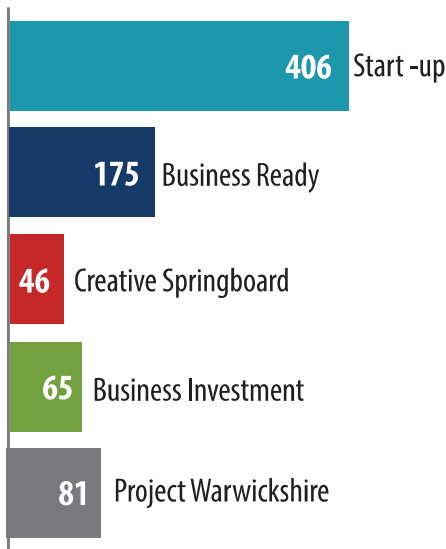


To June 2023:



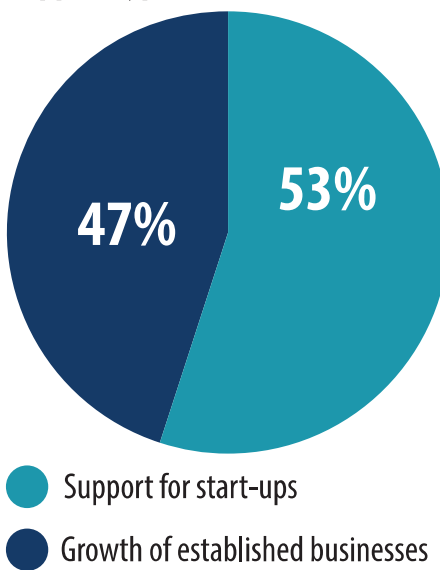
GVA¹ Uplift
£14,753,565

Businesses supported by strand



ROI² £10.54
for every £1 of local authority funding.

Support type:



Of respondents to a survey of businesses which received support from the CW Business: Start Grow and Scale programme.



European Union
European Regional Development Fund

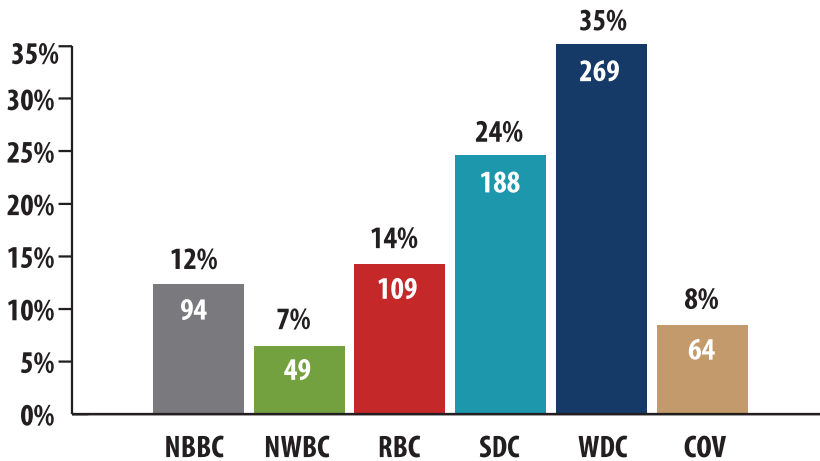
1. Gross Value Added uplift (GVA uplift) is the value generated from the production of goods and services. In this instance, the GVA uplift is based on the value generated from total jobs created, as a result of support from January 2019 to June 2023.
2. Return on Investment (ROI) is the measure of profitability from investment. In this instance, ROI is the value of the jobs created compared with the value of local authority investment from January 2019 to June 2023.



Geographical Breakdown



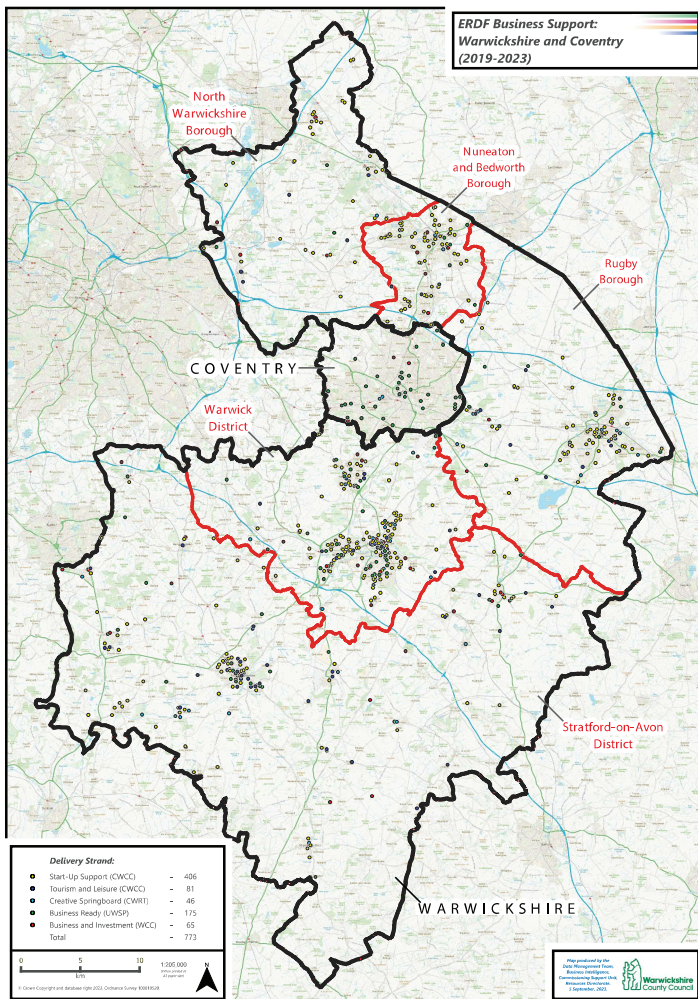
Businesses supported per District & Borough



ONS % of businesses in each District & Borough

NBBC	9.8%
NWBC	7.6%
RBC	13.5%
SDC	21.8%
WDC	20.6%
COV	26.8%

Geographical distribution of businesses by delivery strand



- Agriculture, forestry and fishing
- Manufacturing
- Electricity, gas, steam and air conditioning supply
- Construction
- Wholesale and retail trade; repair of motor vehicles and motorcycles
- Transportation and storage
- Accommodation and food service activities
- Information and communication
- Financial and insurance activities
- Real estate activities
- Professional, scientific and technical activities
- Administrative and support service activities
- Public administration and defence; compulsory social security
- Education
- Human health and social work activities
- Arts, entertainment and recreation
- Other service activities
- Renewable energy / low carbon / environmental

