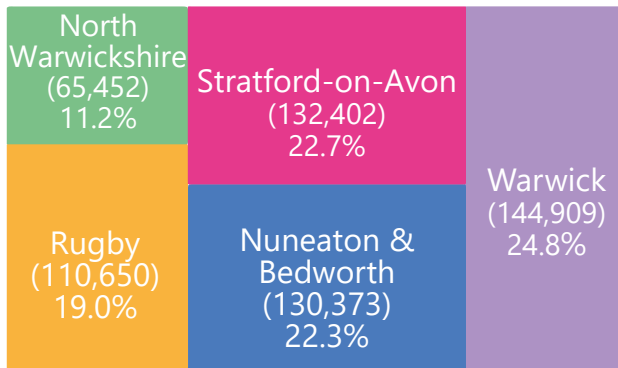


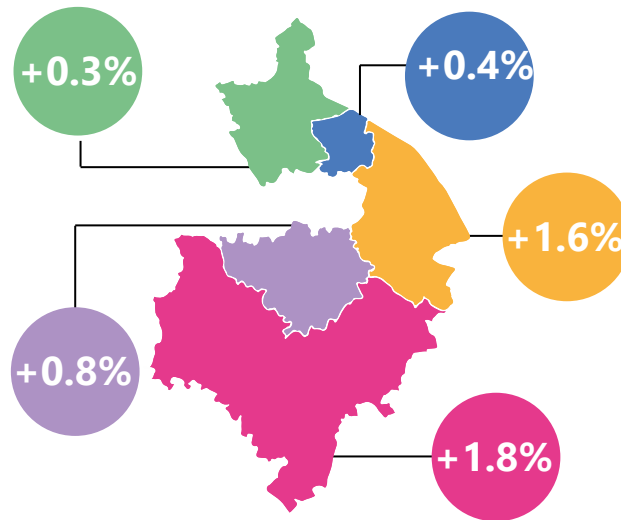


The 2020 mid-year estimates indicate Warwickshire is now home to **583,786** people...



increasing by **5,853** people or **1.0%** from the previous year. This compares to **0.4%** for the UK.

All districts/boroughs had the **same or lower rates of population growth** than the previous year



Around **20%** of Warwickshire residents are **young people** (aged between 0-17)

Around **59%** of Warwickshire residents are of **working age** (aged between 18-64)



Around **21%** of Warwickshire residents are **older people** (aged 65+). Almost 6% are aged 80+



Mid 2020 drivers of change...

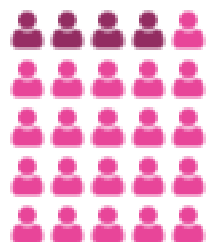


Natural Change*
(-543)

The contribution of natural change to population growth in Warwickshire was negative

Internal migration accounted for the majority of population growth in mid 2020

Internal Migration
(5,329)
83.3%

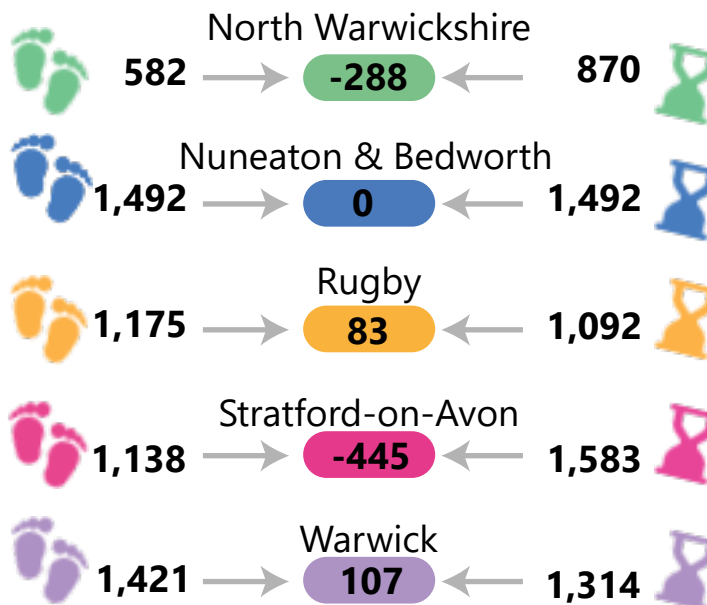


International Migration
(1,027)
16.1%

4/25 migrants to Warwickshire in 2020 were from overseas

*Natural change = births minus deaths
Special populations account for 40/0.6%

Across Warwickshire there were 6,351 deaths and 5,808 births



Population on the move...

Moves in from UK authorities

28,461

Moves out to UK authorities

23,132

International moves in

2,887

International moves out

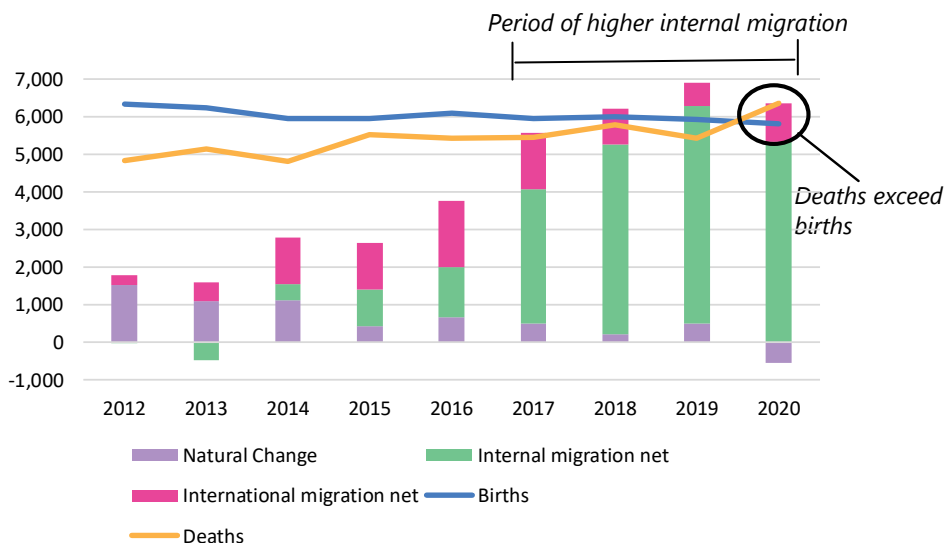
1,860



1 in 4 people moving *within* Warwickshire did so from Warwick District to Stratford-on-Avon



Components of population change, trends over time



These are the official population estimates for the UK. They are updated annually to account for population change (the interplay between births, deaths, internal and international migration) during the period 1 July to 30th June.

The mid 2020 population estimates are at their furthest point from which they are based (the 2011 Census). Outputs from the 2021 Census are expected in early 2022 and will provide revised, more accurate, population estimates for Warwickshire. Additionally, the time frame for mid year population estimates means that they will only describe some of the impacts of the early part of the pandemic on the Warwickshire population.

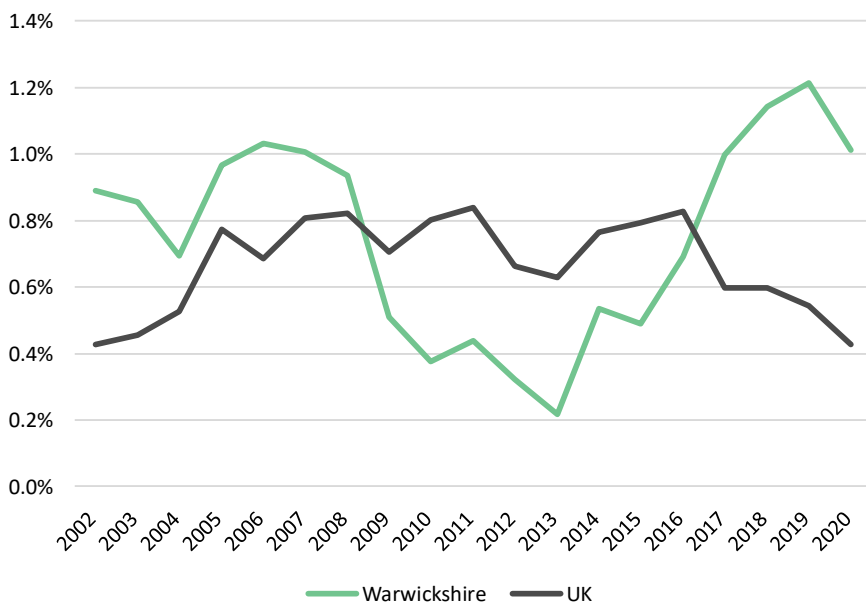
Business Intelligence comment

"ONS suggest the 12 months to June 2020 can be broken into two clear parts. The first eight months, when births, deaths and migration patterns followed similar trends to recent years, and the four months from March, when the pandemic first started to take hold. Impacts of the pandemic do appear evident in Warwickshire in the form of the increase in the number of deaths and reduction in the number of people moving in and out of Warwickshire."

Key messages for Warwickshire

- The population of Warwickshire grew between mid 2019 and mid 2020 by 1.0%, slightly lower than the previous year (1.2%). Since 2017, the growth rate in the county has been above that of the UK.
- The mid 2020 estimates indicate a 17.3% (936 people) rise in the number of deaths in Warwickshire compared to the previous mid year period. Nationally, there was a 13.0% increase.
- The number of births in the county was down on the previous mid year period (5808 compared with 5919) but this is part of a more general downward trend both in the county and nationally.
- While deaths have exceeded births for some boroughs/districts over the last few years, it has not happened in Warwickshire as a whole in the previous twenty years.
- Between mid 2019 and mid 2020, the key driver of population change in Warwickshire was internal migration (moves from within the UK). However, the number of moves both in and out of Warwickshire was down around 12.0% on the previous year - COVID restrictions would have prevented house moves in the later part of the data period (March - June 2020).
- Key flows of population were generally to and from neighbouring authorities notably Coventry, Birmingham and Solihull. Around 7,000 people moved from Coventry to Warwickshire while around 3,000 moved from Warwickshire to Coventry.
- Key population flows within Warwickshire included moves from Warwick District to Stratford-on-Avon District and moves between North Warwickshire and Nuneaton & Bedworth.
- In the year to mid-2020, there were lower numbers of international migrants moving in and out of the county compared to the previous year. However, net international migration was higher than last year because out migration was down on in migration this year.
- Median age in Warwickshire in mid 2020 was 42.8 years, down from 43.0 the previous year. This continues a modest decline in the median age of Warwickshire residents since 2017.

Annual Warwickshire and UK population growth rate, mid 2002 to mid 2020



A report produced by Business Intelligence If you have any questions or feedback, please do get in touch by emailing us at: businessintelligence@warwickshire.gov.uk

Source: <https://www.ons.gov.uk/peoplepopulationandcommunity/populationandmigration/populationestimates>

