

Environmental Management System

Operational Environmental Risk Assessment EMP 06

Prepared by	Issue	Date	Page 1 of 4
J. Burton - EMS Manager	2.0	Sep 2018	Signature
Approved by Steve M. Smith	Head of Property Services – Resources Directorate	Review Date Sep 2019	

1. Purpose

The purpose of this procedure is to:-

- Provide a method for the identification, recording and evaluation of the environmental aspects of activities carried out by and services provided by WCC.
- Carry out a consistent, risk based approach to the assessment of associated real and potential impacts environmental impacts to facilitate the identification of suitable control measures.
- Identify significant adverse risks, including those that may affect the intended outcomes of the EMS
- Identify external environmental threats to the organisation
- Identify compliance obligations along with applicable environmental legislation
- Identify the potential for incorporating life-cycle consideration
- Identify potential opportunities for improvement
- Support continual improvement activities

2. Definition of Terms (taken from ISO 14001:2015)

Environment – surroundings in which an organisation operates, including air, water, land, natural resources, flora, fauna, humans and their interrelationships.

Environmental Aspect - element of an organisation's activities or products or services that interacts or can interact with the environment.

Environmental Impact - change to the environment, whether adverse or beneficial, wholly or partially resulting from an organisation's environmental aspects.

Risk – effect of uncertainty, in particular associated with potential adverse effects (threats)

Opportunity – potential beneficial effects (opportunities)

3. Introduction

Environmental aspects are recorded using a matrix which highlights those aspects found to have a potential impact, positive or negative, on the environment. The matrix shows the calculated risk from an activity in normal, abnormal (e.g. holiday, new operative, maintenance) and reasonably foreseeable emergency conditions.

The environmental aspects matrix provides a method for assessing the impact of WCC's environmental aspects against key environmental receptors land, water, air, depletion of natural resources, creation of waste, flora/fauna and the local population. The impacts of external environmental factors on WCC are also assessed through this method. It also reflects if the impact is indirect and whether environmental legislation/compliance obligations apply.

Significance Rating of Impacts - calculated from the Environmental Aspects Analysis Process, i.e. a number between 1 and 60.

Below 30 = Not significant

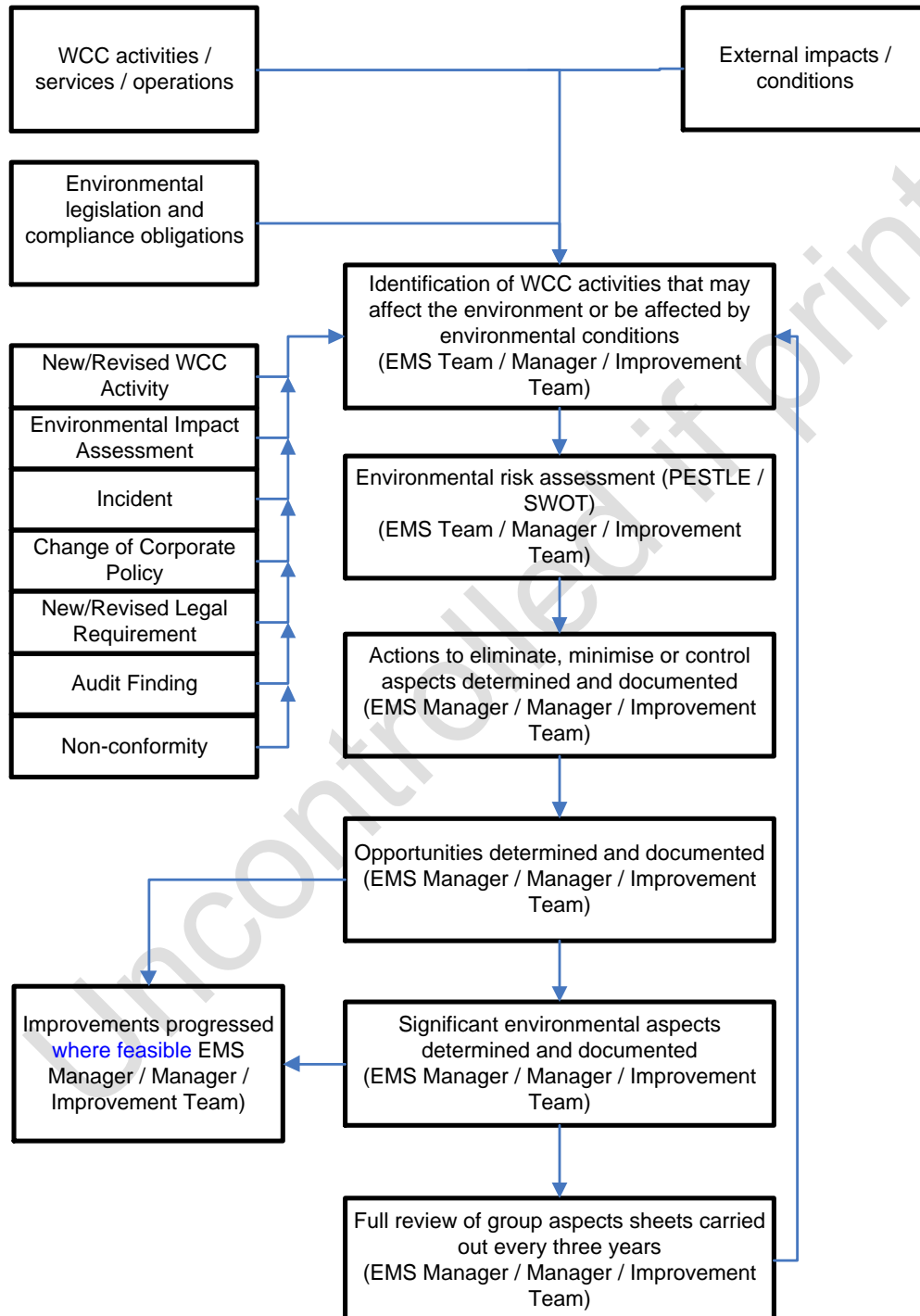
Over 30 = Significant

Environmental Aspects are also considered significant if environmental legislation /

compliance obligations are applicable.

4. Procedure

The following flowchart details the process for the determination of environmental aspects, their level of risk to the organisation, controls in place or required and of opportunities for improvement.



Adequacy of the controls in place are checked as part of the internal audit process.

Appendix 1 - Environmental Aspects Evaluation Process

1) Determine which receptors the aspect affects

2) Determine if environmental legislation or a compliance obligation applies

3) Determine the Intensity Factor of the Impact under normal operating conditions

Score 1	-	Low Intensity	-	Affects only one WCC group/service (local impact)
Score 2	-	Medium Intensity	-	Affects District or County (county impact)
Score 3	-	High Intensity	-	Regional and/or national impact (national impact)

4) Determine the Duration Factor of the Impact under normal operating conditions

Score 2	-	Short Term	-	0-5 years
Score 3	-	Medium Term	-	5-15 years
Score 4	-	Long Term	-	Impact will remain until the operation or service has been removed

5) Determine the Probability of the Impact

Score 2	-	Improbable	-	Low possibility of impact to occur because of design or historic issues
Score 3	-	Probable	-	Distinct possibility that impact will occur.
Score 4	-	Highly Probable	-	Most likely that the impact will occur based on operational knowledge
Score 5	-	Definite	-	Impact will occur regardless of any prevention measures

6) Determine the Significance Rating

Intensity x Duration x Probability = Significance Rating

7) The Significance Rating determines the Significance of the Impact

Rating	-	Under 30	-	Not significant	-	These activities should be monitored and reviewed as per flowchart on page 3 of this procedure
Rating	-	Over 30	-	Significant	-	Where possible the activity should be discontinued and an alternative method of achieving the outcome progressed. Where this is not possible the activity should be closely monitored

NB If environmental legislation or other compliance obligations apply to an aspect it will automatically be classified as significant

The above method can also be used to determine positive aspects of an activity. Where the rating is calculated to be significantly positive this should be noted as good practice.

Where the assessment reveals an opportunity for improvement this should be noted and forwarded to the relevant manager / environmental improvement team for consideration / progression.