



Intensive Support Team

WORKING WITH
THOMAS

BACKGROUND

- Thomas
- 55 year old man



- Lived at home with mum



- Never worked



BACKGROUND

- Learning Disability
- Down's Syndrome
- Autism
- Dementia

BACKGROUND

- Mum had a fall. Was taken to hospital



- Thomas was sad



- Mum was sad



- In the hospital mum became very poor




THE INTENSIVE SUPPORT TEAM

- Came to help look after Thomas and do some activities



- Help Thomas understand what was happening to mum
- Support Thomas to make decisions about his future and where he would like to live

- Mum was dying
- Family worried how Thomas would be with this sad news 
- Thomas did not want to leave his house or his mum

- Arden Commissioning gave extra money to help look after Thomas



- We looked at different places for Thomas to live while mum was very poorly



- The Intensive Support Team made a social story about what was happening to mum

SOCIAL STORY

COPING WITH DEATH

?

Why do people die?

There are different reasons why people die.



Some die of old age.



Some may die after an illness.



Others may die after an accident.

SOCIAL STORY

What is happening to Mum?



Mum is really poorly. She will not get better. People are working with mum so she feels comfortable.

Mum will die. She will stop breathing. She will have no pain any more. Her body will still be here but she will not be able to:

Hear anything



See anything



Cannot speak to you anymore



Her body will not move anymore



When mum dies people will still look after Edward.

SOCIAL STORY

How you may feel



You may feel sad.



You may feel like crying



You may feel angry



This is ok



You can still think about mum and talk about her. You could think of some good memories and some good times that you spent with Mum.

SOCIAL STORY

How you may feel...(cont)



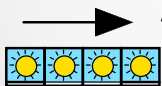
You will not always feel this sad.



It may take a while to remember that they are not coming back.



It is not anybody's fault that they have died.



A time will come when you think of them and remember the good times you had with them.

- This upset Thomas but it helped Thomas understand what was happening to Mum. He could also ask questions



- The Intensive Support Team helped Thomas to get an independent advocate to help him make decisions like where he would like to live
- The Intensive Support Team and the community team, gained Thomas's trust and worked well together

- Mum passed away in November
- The Intensive Support Team visited Thomas at home



- Thomas was very upset but he was very calm.



- Intensive Support Team continued to visit Thomas~



- Family were worried about Thomas going to the funeral because he would be very sad



© 2015 - www.clipart101.com/1007582

- Thomas was given the choice to go to the funeral

- The Intensive Support Team had a meeting with family, trustee, social worker and the community team to talk about the funeral and help Thomas be included



- The Intensive Support Team also made a social story about the funeral.
- A photo album was made for Thomas to look at and remember good times with mum.



© Can Stock Photo - csp15722762

SOCIAL STORY

Mum's Funeral



Mum will have a funeral.



You will go to the funeral in a big car.



At the funeral family and friends will say goodbye to mum



Mum's funeral will be in a crematorium.

SOCIAL STORY



Mum will be inside a coffin.



Mum's coffin may go in a special car called a hearse.



Some family and friends will carry the coffin from the car to the crematorium.



People may wear black or dark clothing to the funeral.

SOCIAL STORY



People may be sad and some may cry. This is okay. You can be sad and may want to cry too.



Mum will be cremated. This will happen at the crematorium where the coffin is turned into ashes.



After the funeral friends and family may meet together to talk and have something to eat and drink.

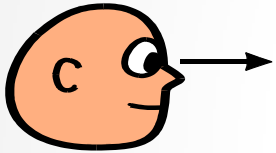


After the funeral you will go home.

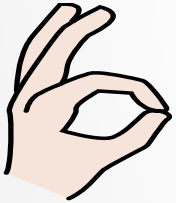
SOCIAL STORY



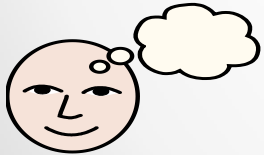
You can have a cup of
tea and cake.



You will not be able to see mum
again



But you will be okay.



You can talk about mum and
remember all the good times.

- Thomas looked at the social story every day so he could understand what was going to happen at the funeral
- Thomas became very upset when he first saw the social story.

- Before the funeral Thomas went out to buy flowers for his mum



Attending the funeral

- Thomas went to the funeral
- The funeral went well and Thomas coped very well.



- At the end of the day the Intensive Support Team and Thomas's support staff took him home where he had a cup of tea and a slice of cake.



How is Thomas now?

- Thomas has coped very well. He sometimes get sad but he has lots of support



- Thomas has told staff that he would like to stay in his own home.

HEF PROFILE

- A HEF profile was first completed 1st September 2016
- Another profile has been completed and this shows a lot of improvements

What happens next?

- The Intensive Support Team will keep supporting Thomas in the short time longer
- If Thomas can not stay in his home the Intensive Support Team will help Thomas move somewhere else

