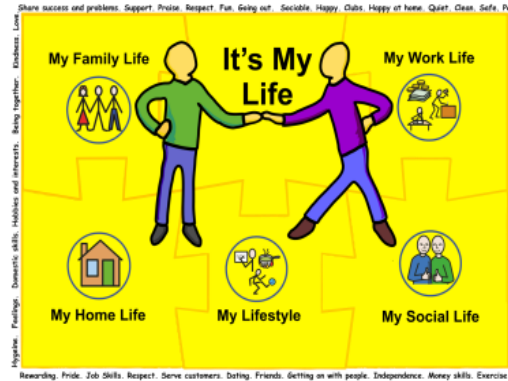


It's My Life



Delivery Plan 2015-2020 Overview and Update

Schedule of Reporting



January 2016 - My Family Life



March 2016 - My Work Life



May 2016 - My Social Life



July 2016 - My Home Life



Overview



- Statement of Intent (plan) progressing well
- Self-Assessment Framework (SAF)
Improvement Plan – awaiting new return
- Transforming Care Plan Progressing Well
– Amber



Monitoring The Plan

- Transforming Care has set up a working group to develop the workforce. They will be looking at:



- Who is the workforce?
- What are the issues?
- What staff training is needed?
- How should the training be delivered?





Monitoring The Plan



Care At Home Tender:



Includes:

- Supported Living
- Domiciliary Care - personal care
- Live In Care – 24 hour care
- Complex clinical care



Monitoring The Plan



Care At Home – continued...



- Lots of tenders were received.



- During April the tenders were looked at and evaluated.



- New contract will start 1st August 2016.

Monitoring The Plan



- Residential & Nursing Care Homes tenders have been received.



- Covers all care home services for adults with support needs which includes Learning Disabilities



- Proposed contract start 1st September 2016.

Monitoring The Plan



- Hubs services have been re-tendered.
- New contract to start July 2016.
- South Warwickshire – Turning Point will manage Hubs.
- North Warwickshire – Independent Support Solutions will manage the Hubs.



Monitoring the Plan



- Day Opportunities contract – people with disabilities and/or autism accessing day opportunities in the community
- New contract started 4 April 2016.
- Arrangements are being made for 14 Day Opportunity Service Providers to provide this service.



Monitoring The Plan



Day Opportunities continued.....

Service includes a range of activities such



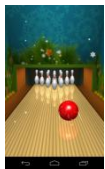
- Arts/crafts



- Preparing for employment



- Gardening



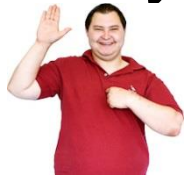
- Community activities such as bowling

Monitoring The Plan



Day Opportunities continued....

Key aims of the service are to:



- Promote independence



- Help people with disabilities to feel part of the community



- Deliver support around the individual's needs.

Monitoring The Plan



- High Support Needs Service:



- Contract started 1 Sept 2015
- Service provided by Brandon Trust and Heart of England Mencap



Monitoring The Plan



- High Support Needs Service continued.....



- Both providers to develop provision for people with high support needs.

- Brandon Trust Consultation events planned at:



- Ramsden Centre, Nuneaton - 6 July
- Sesame Centre, Rugby - 7 July

Any Questions

