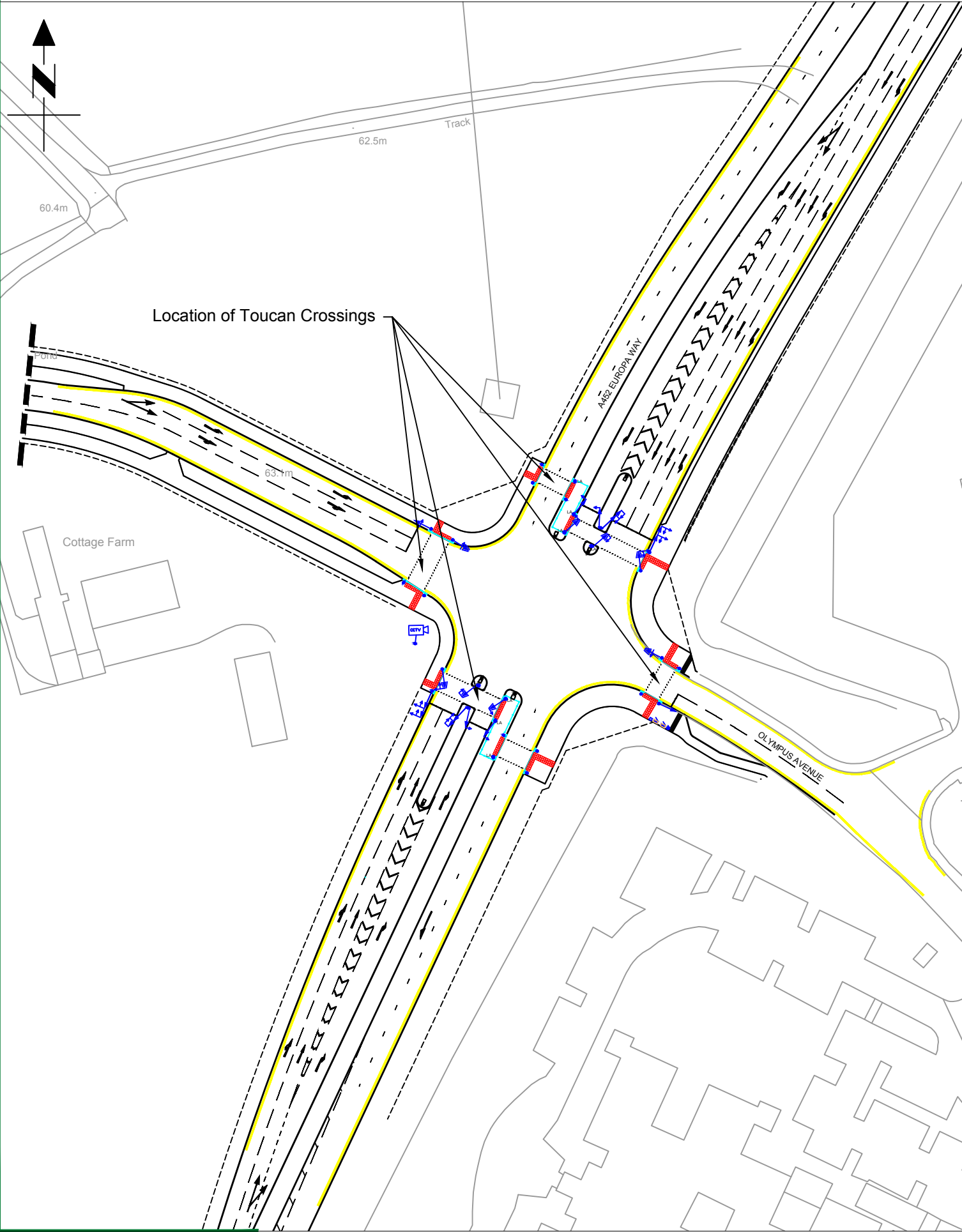


Traffic Signal Junction



- Key**
- Traffic signal equipment mounted on poles
 - Traffic Signal Controller Approximate dimensions:
73cm width x 43cm depth x 116cm height
 - Traffic Signal Controller Feeder Pillar (FP)
Approximate dimensions:
36cm width x 25cm depth x 60cm height
 - Telecom Feeder Pillar (FP)
Approximate dimensions:
36cm width x 25cm depth x 60cm height
 - Red Tactile Paving
 - CCTV Camera to be installed on a new Lowering
Trolley Head Pole AW1545/10LTH Cabinet
Based with Cable Management System and Drop
Down Arm for 15kg camera to be supplied by
Altron Communications Equipment Ltd
 - 1018.1 Continuous 100mm Double Yellow Line

NOTES
All traffic signal equipment and road markings shown are indicative and may be subject to change during detailed design or during installation due to site constraints.

A	EM	To include new road layout	11/04/18
REV	DRN	AMENDMENT	DATE



Design Services

Communities
Shire Hall Post Room
Warwick
CV34 4SP
Tel : 01926 410410
Web : www.warwickshire.gov.uk



C:\DesignServices\24.2\265\3 Drawings\3-01 AutoCAD\24.2---265-005.dwg

PROJECT
A452 - Europa Way/Olympus Avenue
Proposed Traffic Signal Junction

TITLE
Public Notice Plan
Location of Toucan Crossings
Purpose of Drawing: Consultation

Drm	EM	Ck'd	GD	App'd	GD
Date	29-03-18	Date	10-05-18	Date	10-05-18

Status
Approved (Level 3)

Scale
1:1000

Sheet size
A3

DRG. NO.
24.2---265-005

Rev.
A