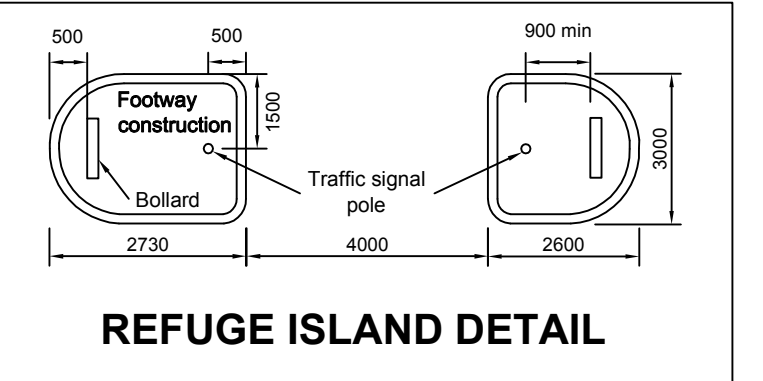
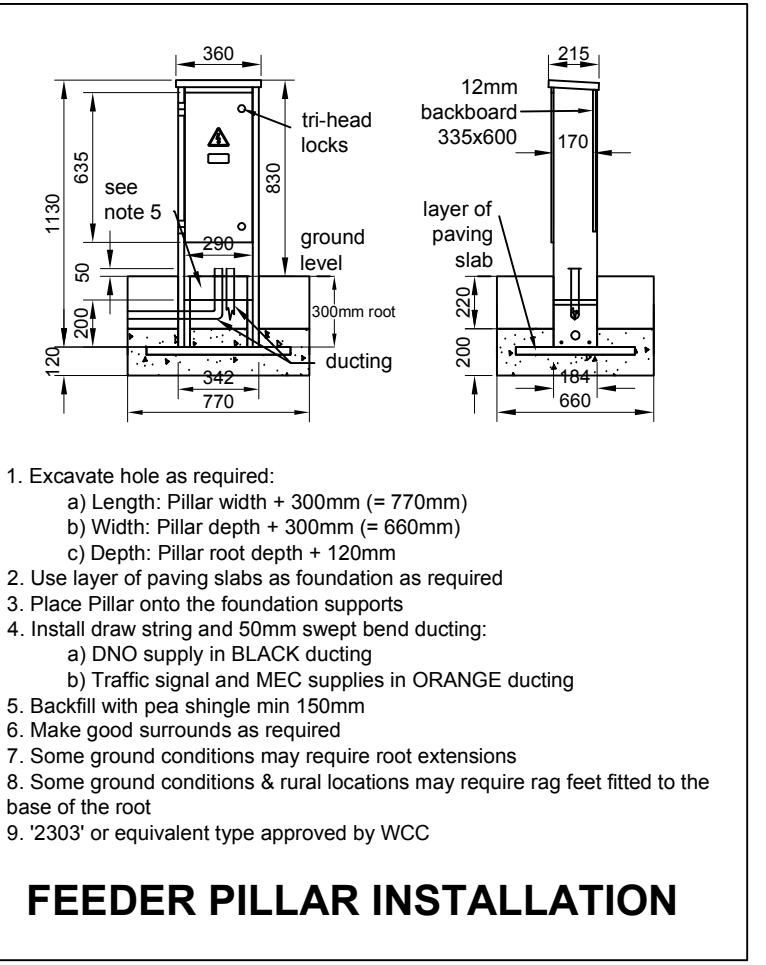
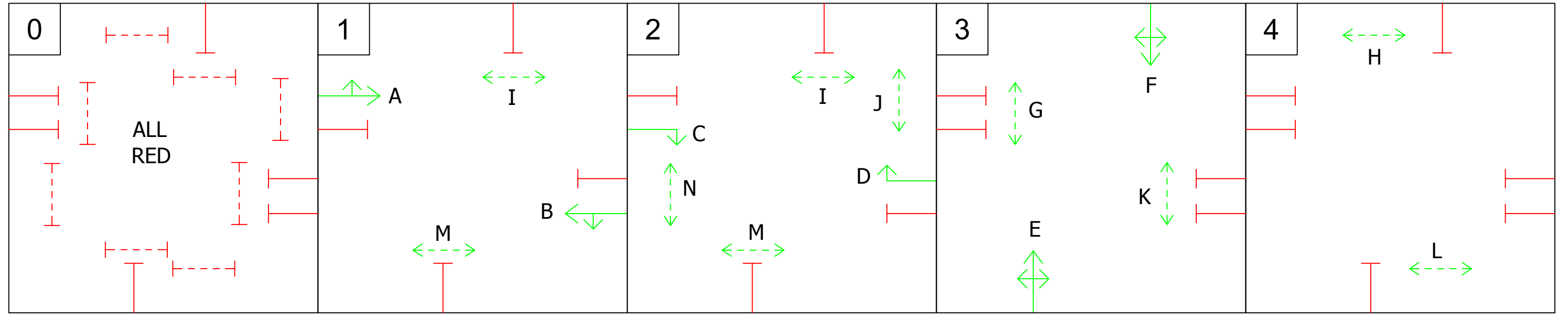


- Key**
- 3.9m Black Straight Low Access Signal Pole (poles 17, 18, 35 and 36)
 - 4m Black Straight Signal Pole (poles 1,3,5,7,8,10,15,16,19,21,23,25,26,28,33,34)
 - 2m Black Signal Pole with welded top (poles 2,4,6,9,11,12,13,14,20,22,24,27,29,30,31,32)
 - 3 aspect LED 'red/yellow/green' traffic signal head with primary cowls
 - 3 aspect LED 'red/yellow/green' traffic signal head with secondary cowls
 - 3 aspect LED 'red/yellow/green ahead arrow' traffic signal head with primary cowls
 - 3 aspect LED 'red/yellow/green ahead arrow' traffic signal head with secondary cowls
 - 3 aspect LED 'red/yellow/green right turn arrow' traffic signal head
 - 3 aspect LED 'red/yellow/green right turn arrow' traffic signal head with secondary cowls
 - 4 aspect LED in-line 'red/yellow/green ahead arrow/green left arrow' traffic signal head with primary cowls
 - 4 aspect LED in-line 'red/yellow/green ahead arrow/green left arrow' traffic signal head with secondary cowls
 - Pedestrian - Cycle nearside LED indicator (red man - cycle / green man - cycle) with integrated push button unit. NFOV optics with lateral adjustment housing. Aspect to be fitted with tactile device. AGD 947 OR EQUIVALENT TYPE APPROVED BY WCC
 - Black Microwave Kerb Side Detector. Extra low voltage
 - Black Microwave Pedestrian On-crossing Detector. Extra low voltage (AGD 226) OR EQUIVALENT TYPE APPROVED BY WCC
 - Black Microwave Overhead Stop Line Detector. Extra low voltage (48V) (AGD 605) OR EQUIVALENT APPROVED BY WCC
 - Altron Standard CCTV pole (Type AW1502/8LTH) to be supplied by Altron Communications Equipment Ltd 8m galvanised black wide base pole. OR EQUIVALENT TYPE APPROVED BY WCC
 - Black Controller Cabinet with NAL Controller base OR EQUIVALENT TYPE APPROVED BY WCC
 - Black Miscellaneous Equipment Cabinet (MEC) with NAL Controller base OR EQUIVALENT TYPE APPROVED BY WCC
 - Black 2302 Pudsey Diamond Feeder Pillar for Electricity Supply OR EQUIVALENT TYPE APPROVED BY WCC. REC Electrical Supply should be an unmetered single phase 230 Volt supply at 50Hz to be arranged by Contractor
 - Black 2302 Pudsey Diamond Feeder Pillar for Telecoms OR EQUIVALENT TYPE APPROVED BY WCC
 - Single Aspect Keep Left Bollard (Diag 606) - Pudsey Diamond Flexaboll OR EQUIVALENT TYPE APPROVED BY WCC
 - Single Aspect No Entry Bollard (Diag 616) - Pudsey Diamond Flexaboll OR EQUIVALENT TYPE APPROVED BY WCC
 - Single Aspect Plain face Bollard - Pudsey Diamond Flexaboll OR EQUIVALENT TYPE APPROVED BY WCC
 - 'Grasscrete' hardstanding area for Maintenance Vehicle Parking with 50mm footway edgings. 25mm upstand dropped kerbs to be used.
 - Footway to be constructed for Controller and feeder pillar with 50mm footway edgings
 - Red Tactile Paving (400mm x 400mm) - refer to Tactile Paving Detail. Any cut slabs to minimum of 150mm wide.
 - High Visibility Type V2 on main road / V4 on side roads Pedestrian Guard Railing - minimum width 70mm. Galvanised black powder coated (RAL 9005 Jet Black) Where located near a traffic signal pole the gap between pole and guard railing should not be greater than 200mm

- NOTES**
- All dimensions are in millimetres unless otherwise stated.
 - The Contractor will mark out and the Engineer will check the positions of the street equipment before anything is installed.
 - The minimum horizontal clearance between the kerb face and street equipment is 450mm but 600mm for traffic signals equipment.
 - Anti-slip lids must have a skid resistance value greater than 70 in dry conditions.
 - Blue Polypropylene 8mm draw rope to be provided in all ducts.
 - All ducts to be trimmed flush with internal access chamber side.

Staging Diagram



ALTRON STANDRAD CCTV POLE (TYPE AW1545/8LTH)

