

ALL TRAFFIC SIGNAL EQUIPMENT AND ROAD MARKINGS SHOWN ARE INDICATIVE AND MAY BE SUBJECT TO CHANGE DURING DETAILED DESIGN OR DURING INSTALLATION DUE TO SITE CONSTRAINTS

ALL PROPOSED ROAD MARKINGS TO BE IN ACCORDANCE WITH "TRAFFIC SIGNS REGULATIONS & GENERAL DIRECTIONS"

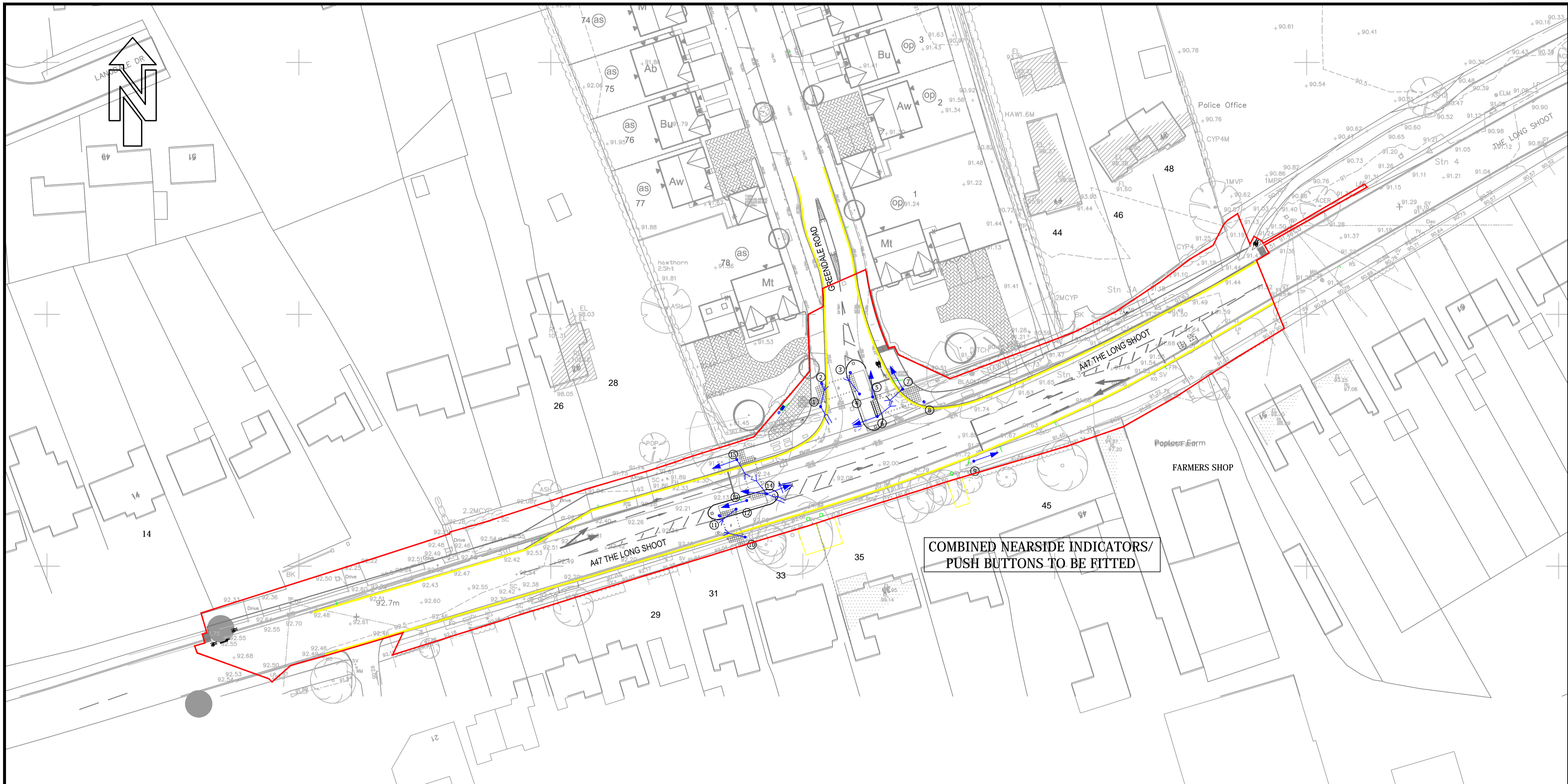
ALL WORKS SUBJECT TO S278 APPROVAL

ALL PROPOSED SIGNS & ROAD MARKINGS TO BE AGREED WITH WCC

- DO NOT SCALE FROM THIS DRAWING. IF IN DOUBT CONTACT TRAVIS BAKER LIMITED.
- ALL DIMENSIONS ARE IN METRES UNLESS OTHERWISE NOTED.
- THIS DRAWING IS TO BE READ IN CONJUNCTION WITH ALL OTHER RELEVANT DRAWINGS RELATING TO THIS PROJECT.
- ALL DIMENSIONS SHOULD BE CHECKED ON SITE PRIOR TO CONSTRUCTION. ANY DISCREPANCIES SHOULD BE IMMEDIATELY NOTIFIED IN WRITING TO TRAVIS BAKER LIMITED.
- THE CONTRACTOR SHALL PRIOR TO CONSTRUCTION CHECK AND VERIFY THAT THE DETAILS SHOWN ON THIS DRAWING ARE FULLY COMPATIBLE WITH ANY AS CONSTRUCTED DIMENSIONS OR LEVELS. ANY DISCREPANCIES TO BE REPORTED IMMEDIATELY IN WRITING TO TRAVIS BAKER LIMITED.
- THIS DRAWING HAS BEEN PREPARED FOR THE EXCLUSIVE USE OF THE COMMISSIONING PARTY AND UNLESS AGREED IN WRITING BY TRAVIS BAKER LIMITED NO OTHER PARTY MAY USE OR RELY ON ITS CONTENTS. NO LIABILITY IS ACCEPTED BY TRAVIS BAKER LIMITED FOR ANY USE OF THIS DRAWING OTHER THAN FOR THE PURPOSE FOR WHICH IT WAS ORIGINALLY PREPARED.
- IT SHOULD BE NOTED THAT THIS DRAWING MAY INCLUDE DATA PROVIDED BY THIRD PARTIES. NO LIABILITY IS ACCEPTED BY TRAVIS BAKER LIMITED AS TO THE ACCURACY OF THIS DATA.
- THIS DRAWING SHALL NOT BE REPRODUCED IN ANY WAY WITHOUT THE WRITTEN PERMISSION OF TRAVIS BAKER LIMITED.

**Key**

- S278 Works Boundary
- Proposed Double Yellow Lines
- SIGNAL POLES**
  - 4.0m Straight Pole
  - 2.0m Stub Pole
- VEHICLE SIGNAL HEADS**
  - Primary ELV RAG LED Signal Head (type 1)
  - Secondary ELV RAG LED Signal Head (type 1)
- PEDESTRIAN SIGNAL EQUIPMENT**
  - On Crossing Detector (OCD)
  - Kerbside Detector (KSD)
- VEHICLE DETECTION**
  - All Red Above Ground Detector (AR)
- SIGNAL EQUIPMENT**
  - ELV Traffic Controller with NAL Cabinet Base
  - Electric Feeder Pillar (FP)



D	FURTHER SIGNAL INFORMATION ADDED	14.12.16	AG	GE
C	ADDED NUMBERS TO POLES, NOTES, AMENDED KEY, REMOVED TRAFFIC SIGNALS IN PHASE E	13.12.16	AG	GE
B	AMENDED SPLITTER ISLAND SIZE	06.12.16	AG	GE
A	AMENDED KEY AND DRAWING	09.11.16	AG	GE

**travis baker**

Travis Baker  
Tinsley Point  
New Road  
Halesowen  
West Midlands  
B63 3HY

Tel: 0121 550 8037  
Fax: 0121 550 8047  
info@travisbaker.co.uk  
www.travisbaker.co.uk

CLIENT  
**BELLWAY HOMES,  
WEST MIDLANDS**

PROJECT  
**THE LONG SHOOT, NUNEATON,  
PHASE 2 S278 WORKS**

TITLE  
**CONSULTATION PLAN**

DRAWN	AUTHORISED	SCALE	DATE
AG	GE	1:500@A1	03.11.16

PROJECT NO.	DRAWING NO.	REV
11052	621	D

STATUS  
**PRELIMINARY**