
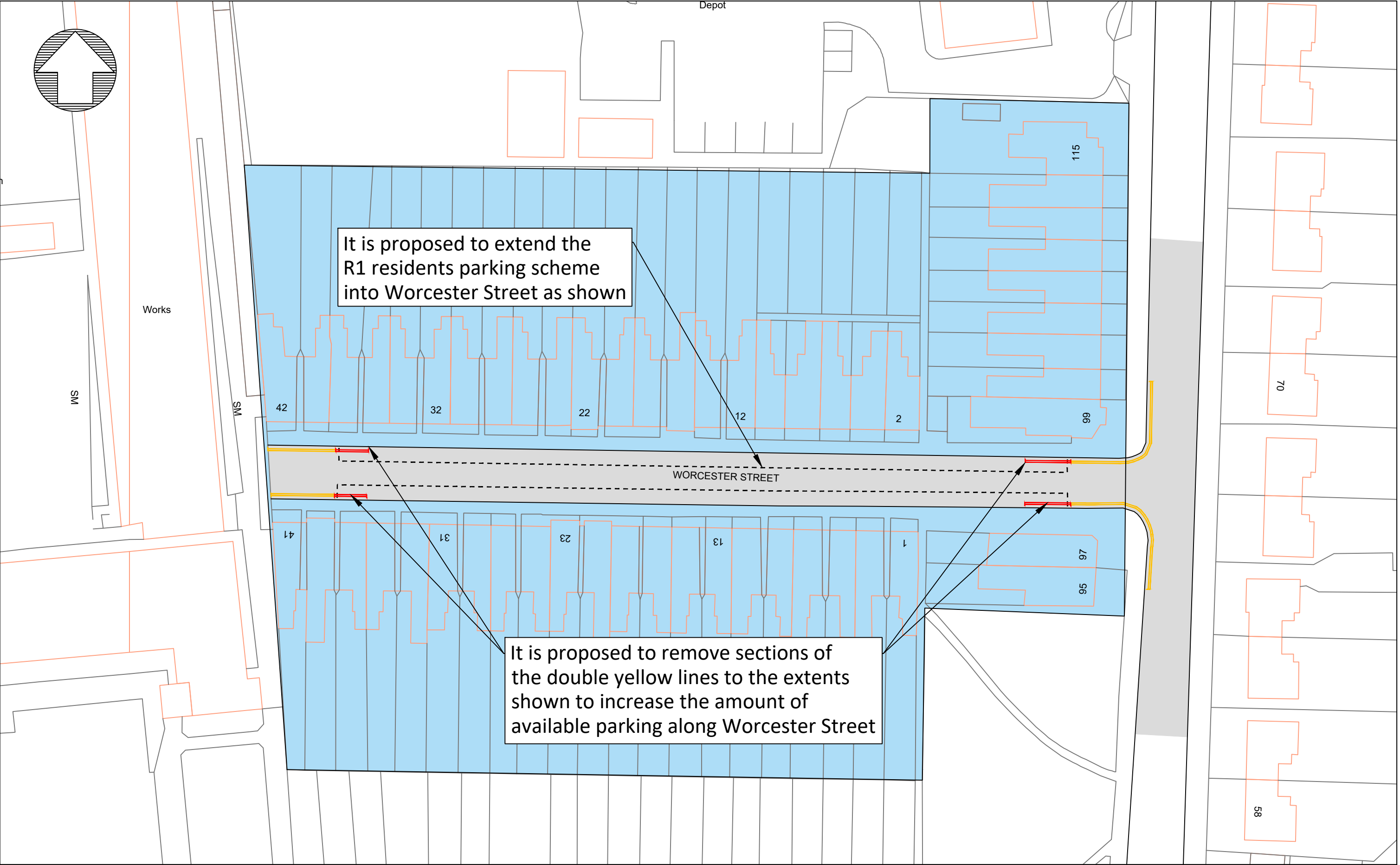





H:\CH-Minor Works\TRAFFIC REGULATION ORDERS\CPE PARKING\Rugby\Variation 8 - Annual programme 23-24\Statutory Consultation\PTRO23-018.dwg

<div><div>County Highways Minor Works Warwickshire County Council Shire Hall Warwick CV34 4RL Tel: 01926 410410</div><div>www.warwickshire.gov.uk chminorworks@warwickshire.gov.uk</div></div>	NOTES	REV	DATE	BY	CHK	AMENDMENT	Drawing title	Drawn by	Checked by
		-	--/--/--	-	-	-	Adams Street Rugby	BD	GS
		-	--/--/--	-	-	-		Date	2 February 2024
		-	--/--/--	-	-	-	Proposed Double Yellow Lines	Scale	NTS @ A3_L
		-	--/--/--	-	-	-	Project title	Drawing number	
		-	--/--/--	-	-	-	Rugby CPE Variation No.8	PTRO23-018-001	

Based on Ordnance Survey mapping with the permission of the Controller of HMSO
© Crown Copyright and database right 2011. Ordnance Survey 100019520.
All rights reserved.
Unauthorised reproduction infringes copyright and may lead to prosecution or civil proceedings.
Warwickshire County Council.



H:\CH-Minor Works\TRAFFIC REGULATION ORDERS\CPE PARKING\Rugby\Variation 8 - Annual programme 23-24\Statutory Consultation\PTRO23-018.dwg



County Highways Minor Works
Warwickshire County Council
Shire Hall
Warwick
CV34 4RL
Tel: 01926 410410

www.warwickshire.gov.uk
chminorworks@warwickshire.gov.uk

NOTES

Based on Ordnance Survey mapping with the permission of the Controller of HMSO
© Crown Copyright and database right 2011. Ordnance Survey 100019520.
All rights reserved.
Unauthorised reproduction infringes copyright and may lead to prosecution or civil proceedings.
Warwickshire County Council.

REV	DATE	BY	CHK	AMENDMENT
-	--/--/--	-	-	-
-	--/--/--	-	-	-
-	--/--/--	-	-	-
-	--/--/--	-	-	-
-	--/--/--	-	-	-

Drawing title

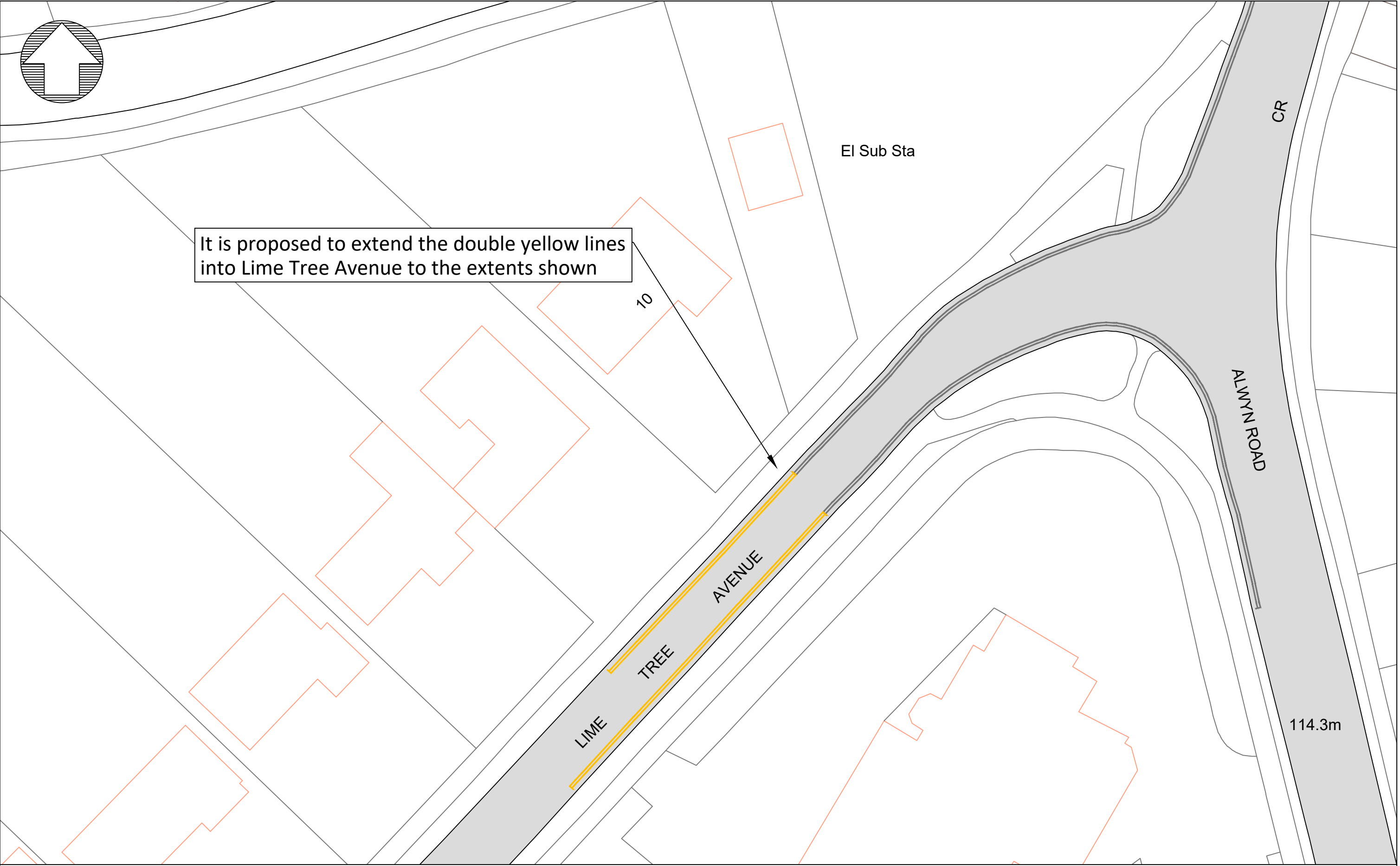
**Worcester Street
Rugby**

Proposed Residents Parking


Project title

Rugby CPE Variation No.8

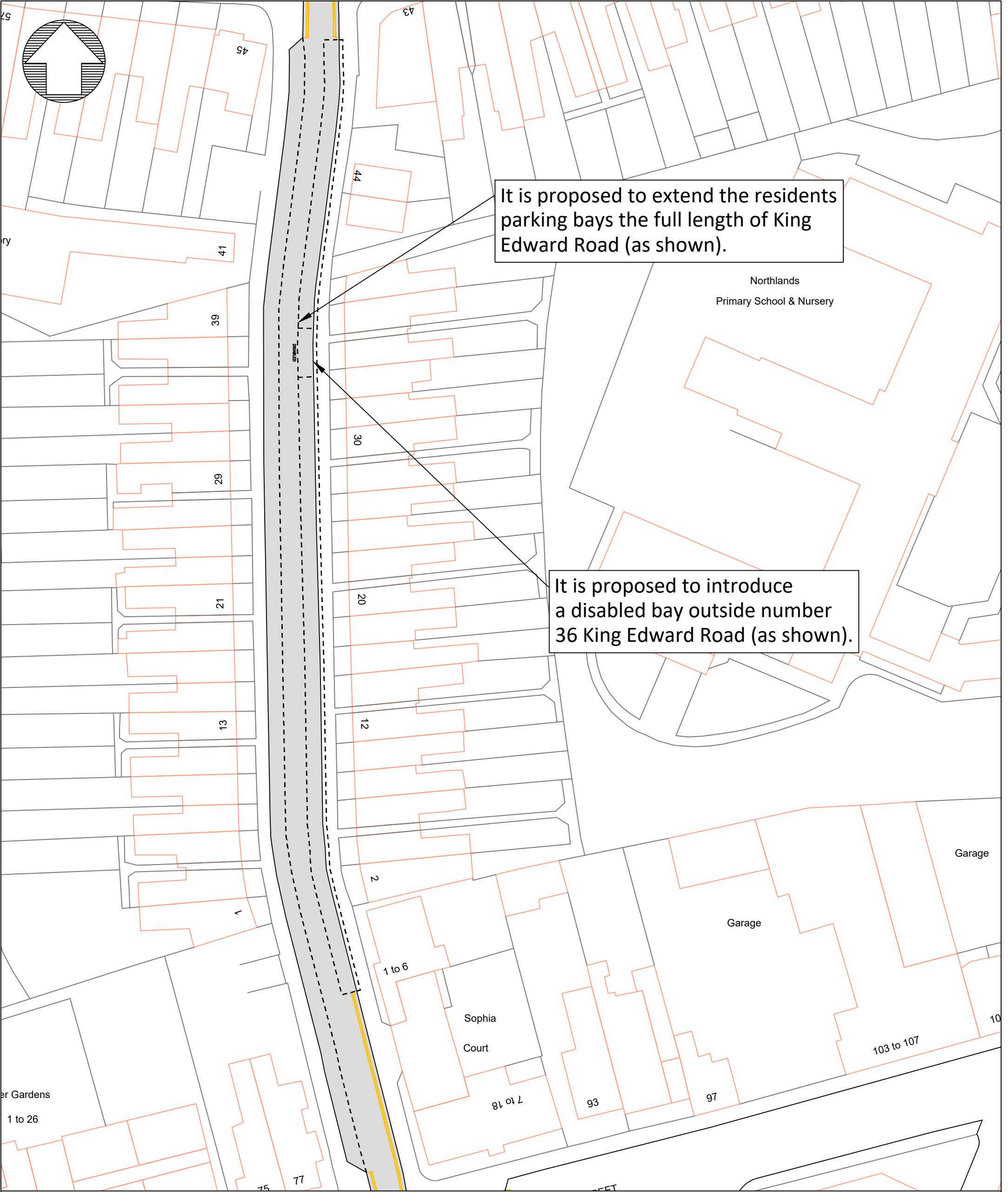
Drawn by	Checked by
BD	GS
Date	2 February 2024
Scale	NTS @ A3_L
Drawing number	PTRO23-018-002



H:\CH-Minor Works\TRAFFIC REGULATION ORDERS\CPE PARKING\Rugby\Variation 8 - Annual programme 23-24\Statutory Consultation\PTRO23-018.dwg

<div><div>County Highways Minor Works Warwickshire County Council Shire Hall Warwick CV34 4RL Tel: 01926 410410</div><div>www.warwickshire.gov.uk chminorworks@warwickshire.gov.uk</div></div>	NOTES	REV	DATE	BY	CHK	AMENDMENT	Drawing title	Drawn by	Checked by	
		-	--/--/--	-	-	-	Lime Tree Avenue Rugby	BD	GS	
		-	--/--/--	-	-	-		Date	15 October 2023	
		-	--/--/--	-	-	-	Proposed Double Yellow Lines	Scale	NTS @ A3_L	
		-	--/--/--	-	-	-		Project title	Rugby CPE Variation No.8	
		-	--/--/--	-	-	-		Drawing number	PTRO23-018-003	

Based on Ordnance Survey mapping with the permission of the Controller of HMSO
© Crown Copyright and database right 2011. Ordnance Survey 100019520.
All rights reserved.
Unauthorised reproduction infringes copyright and may lead to prosecution or civil proceedings.
Warwickshire County Council.



H:\CH-Minor Works\TRAFFIC REGULATION ORDERS\CPE PARKING\Rugby\Variation 8 - Annual programme 23-24\Statutory Consultation\PTRO23-018.dwg

REV	DATE	BY	CHK	AMENDMENT	REV	DATE	BY	CHK	AMENDMENT	REV	DATE	BY	CHK	AMENDMENT
-	--/--/--	-	-	-	-	--/--/--	-	-	-	-	--/--/--	-	-	-
-	--/--/--	-	-	-	-	--/--/--	-	-	-	-	--/--/--	-	-	-



County Highways Minor Works
Warwickshire County Council
Shire Hall
Warwick
CV34 4RL
Tel: 01926 410410

www.warwickshire.gov.uk
chminorworks@warwickshire.gov.uk

NOTES

Based on Ordnance Survey mapping with the permission of the Controller of HMSO
© Crown Copyright and database right 2011. Ordnance Survey 100019520.
All rights reserved.
Unauthorised reproduction infringes copyright and may lead to prosecution or civil proceedings.
Warwickshire County Council.

Drawing title

King Edward Road
Rugby

Proposed Resident Parking Bays

Project title

Rugby CPE Variation No.8

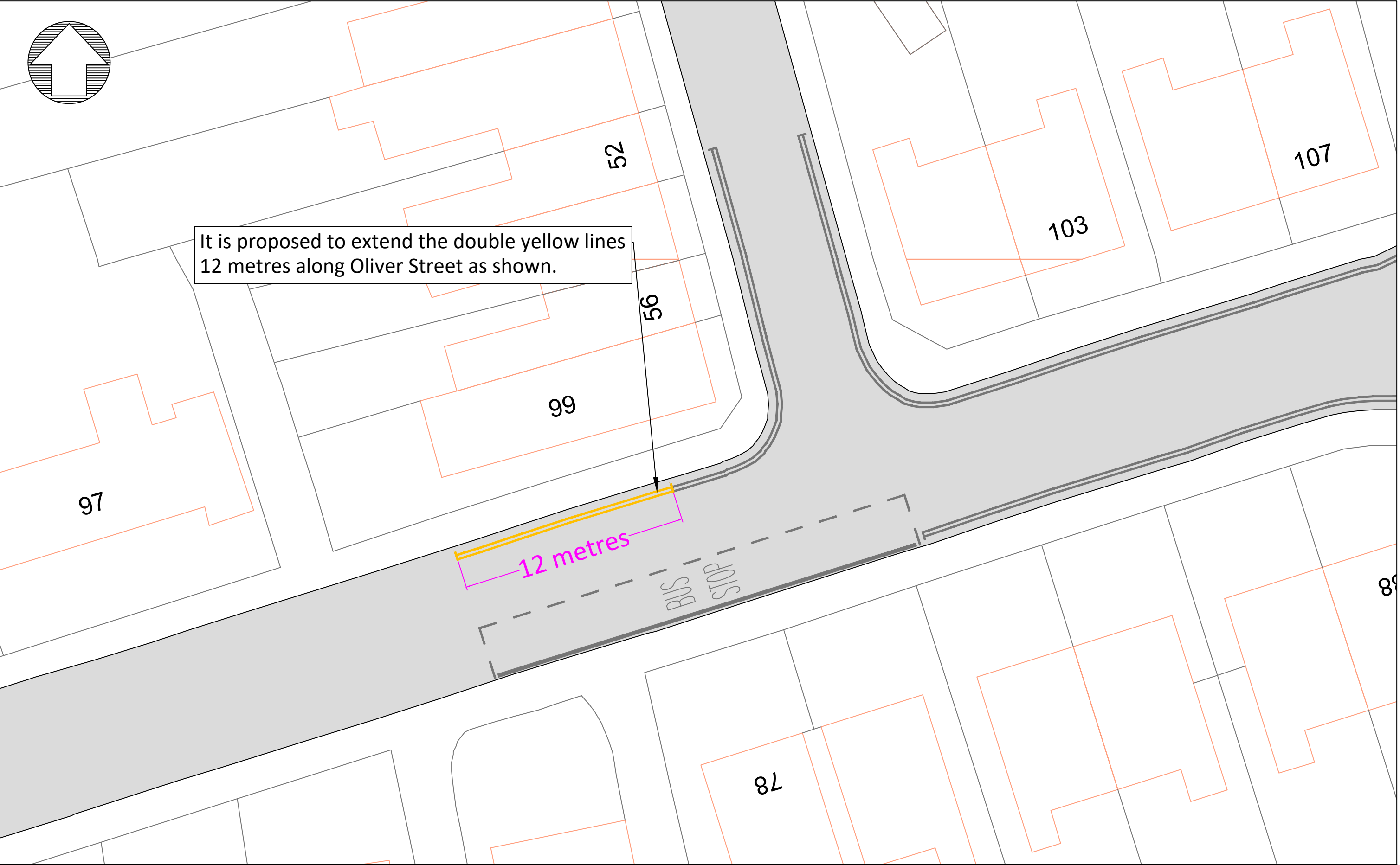
Drawn by
BD

Checked by
GS


Date
15 October 2023

Scale
NTS @ A3_P

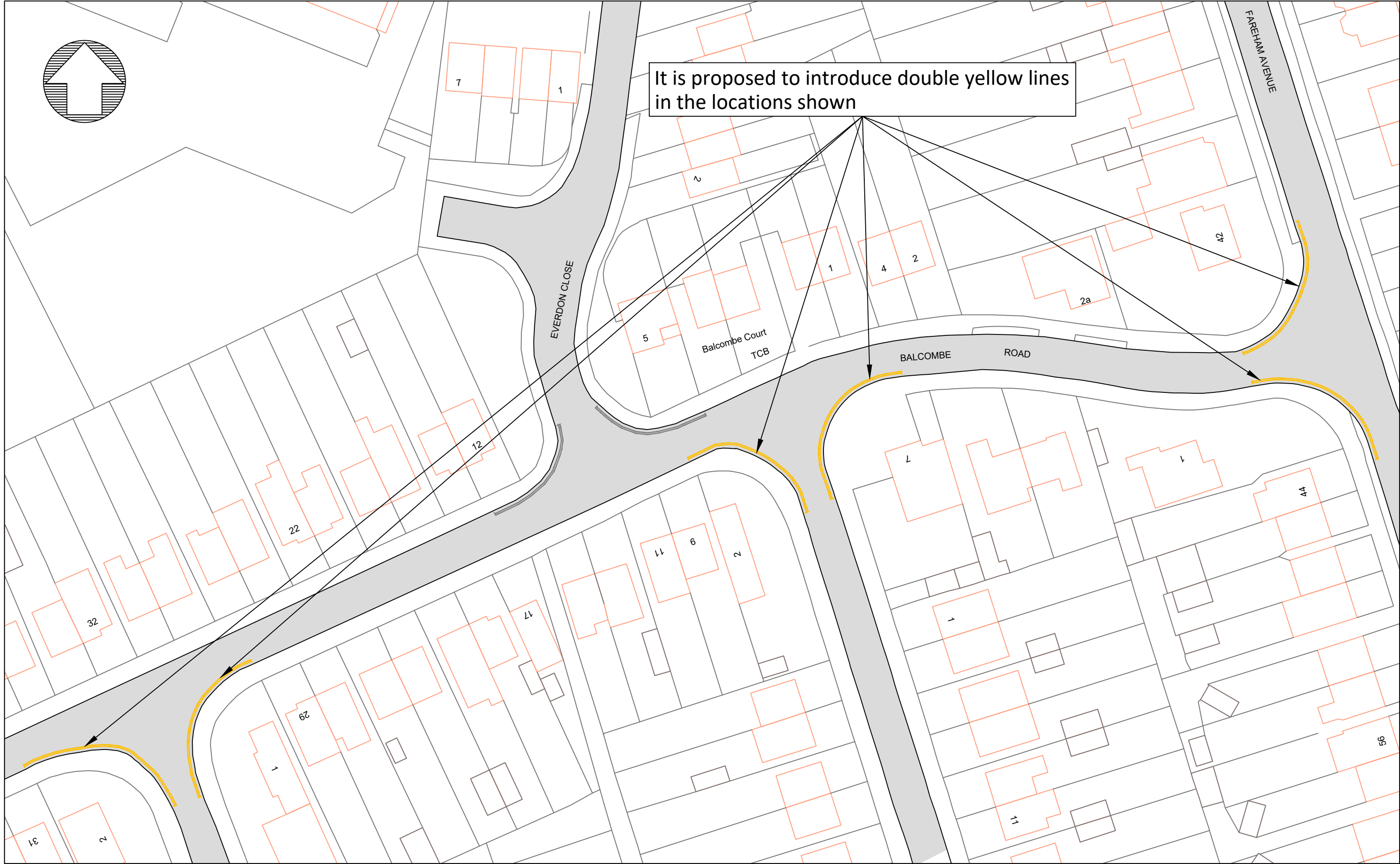
Drawing number
PTRO23-018-004



H:\CH-Minor Works\TRAFFIC REGULATION ORDERS\CPE PARKING\Rugby\Variation 8 - Annual programme 23-24\Statutory Consultation\PTRO23-018.dwg

<div><div>County Highways Minor Works Warwickshire County Council Shire Hall Warwick CV34 4RL Tel: 01926 410410</div><div>www.warwickshire.gov.uk chminorworks@warwickshire.gov.uk</div></div>	NOTES	REV	DATE	BY	CHK	AMENDMENT	Drawing title	Drawn by	Checked by	
		-	--/--/--	-	-	-	Dale Street Rugby	BD	GS	
		-	--/--/--	-	-	-		Date	15 October 2023	
		-	--/--/--	-	-	-	Proposed Double Yellow Lines	Scale	NTS @ A3_L	
		-	--/--/--	-	-	-		Project title	Rugby CPE Variation No.8	
		-	--/--/--	-	-	-		Drawing number	PTRO23-018-005	

Based on Ordnance Survey mapping with the permission of the Controller of HMSO
© Crown Copyright and database right 2011. Ordnance Survey 100019520.
All rights reserved.
Unauthorised reproduction infringes copyright and may lead to prosecution or civil proceedings.
Warwickshire County Council.



It is proposed to introduce double yellow lines in the locations shown

H:\CH-Minor Works\TRAFFIC REGULATION ORDERS\CPE PARKING\Rugby\Variation 8 - Annual programme 23-24\Statutory Consultation\PTRO23-018.dwg



County Highways Minor Works
Warwickshire County Council
Shire Hall
Warwick
CV34 4RL
Tel: 01926 410410

NOTES

Based on Ordnance Survey mapping with the permission of the Controller of HMSO
© Crown Copyright and database right 2011. Ordnance Survey 100019520.
All rights reserved.
Unauthorised reproduction infringes copyright and may lead to prosecution or civil proceedings.
Warwickshire County Council.

REV	DATE	BY	CHK	AMENDMENT
-	--/--/--	-	-	-
-	--/--/--	-	-	-
-	--/--/--	-	-	-
-	--/--/--	-	-	-
-	--/--/--	-	-	-

Drawing title

Balcome Road Rugby

Propos
Project title

Rugby CPE Variation No.8

Drawn by

BD

15 October 2023

Scale

NTS @ A3_L

Drawing number

PTR023-018-006