

WARWICKSHIRE COUNTY COUNCIL

ROAD TRAFFIC REGULATION ACT 1984

THE WARWICKSHIRE COUNTY COUNCIL (B4429 COVENTRY ROAD, DUNCHURCH, RUGBY) (30 MPH, 40 MPH, 50 MPH & 60 MPH SPEED LIMIT) VARIATION NO.1 ORDER 2025

The Warwickshire County Council in exercise of its powers under section 84 of the Road Traffic Regulation Act 1984 (hereinafter referred to as "the Act"), and of all other enabling powers, hereby make the following Order: -

1. The Warwickshire County Council (B4429 Coventry Road, Dunchurch, Rugby, (30 MPH, 40 MPH, 50 MPH & 60 MPH Speed Limit) Order 2016 (which said Order of 2016 is hereinafter referred to as 'the Principal Order') is hereby varied in the manner and to the extent hereinafter provided.
2. Drawing number PTRO22-020-001 appended to this Order shall hereinafter be referred to as "the Plan".
3. In schedule 2 of the Principal Order after the wording "40 mph Speed Limit" delete the text and replace it with the following text:-

"1. B4429 Coventry Road, Dunchurch

- (i) From the centre-line of its junction with the unnamed road (the Symmetry Park access road - said road is shown coloured green and hatched blue on the Plan) southwards to the roundabout junction with the A45.
- (ii) From its junction with the unnamed road (the Symmetry Park access road - said road is shown coloured green and hatched blue on the Plan) to a point 154 metres west of the property boundary between 91/ Holly Cottage.

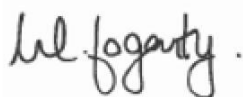
2. Unnamed Road (Symmetry Park Access Road), Dunchurch

- (i) From the centre-line of its junction with the B4429 Coventry Road, northwards for its entire length (as shown coloured green and hatched blue on the Plan)."
4. In the Principal Order delete Article 3 in its entirety.
 5. In the Principal Order delete Article 4 in its entirety.
 6. In the Principal Order delete Schedule 3 in its entirety.

7. In the Principal Order delete Schedule 4 in its entirety.
8. This order may be cited as "The Warwickshire County Council (B4429 Coventry Road, Dunchurch, Rugby) (30MPH, 40MPH, 50MPH & 60 MPH Speed Limit) Variation No.1 Order 2025 and shall come into force on 18th Day of August Two Thousand and Twenty Five

SIGNED by the Proper Officer
for and on behalf of The Warwickshire County Council

on the 6 day of August Two thousand and twenty five



Monica Fogarty
Chief Executive Officer

DocuSigned by:



96C5503DFCA44BA...

Authorised by



Initials.....

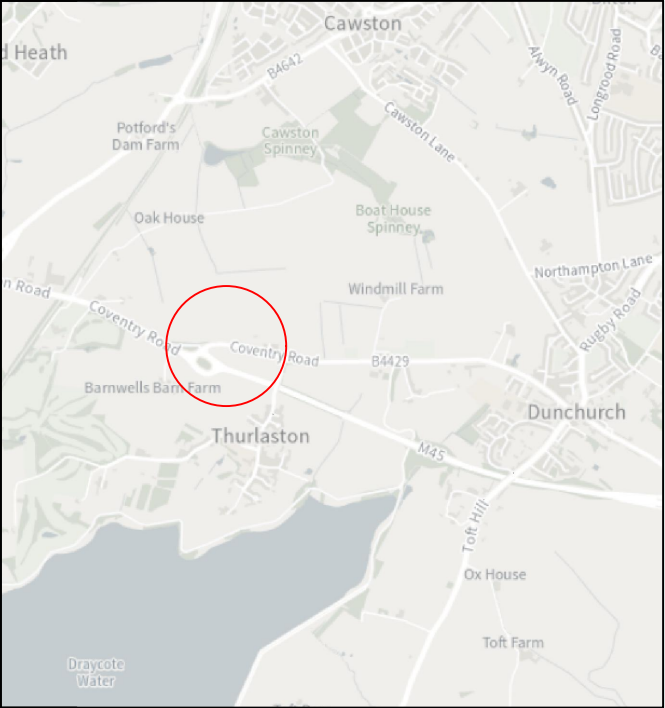
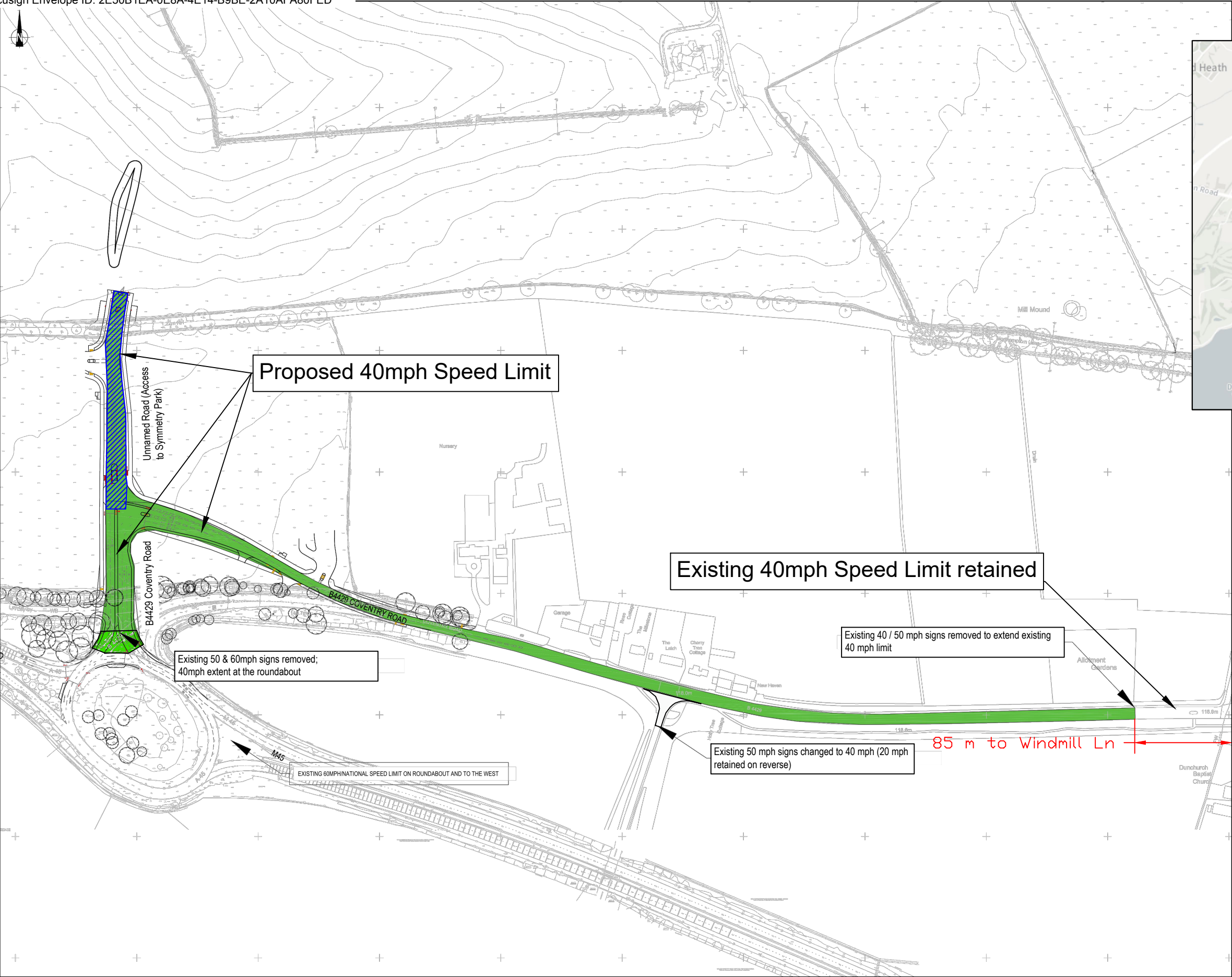
1644/25

DATED 6 August **2025**

WARWICKSHIRE COUNTY COUNCIL

ROAD TRAFFIC REGULATION ACT 1984


THE WARWICKSHIRE COUNTY COUNCIL (B4429 COVENTRY ROAD, DUNCHURCH, RUGBY) (30 MPH, 40 MPH, 50 MPH & 60 MPH SPEED LIMIT) VARIATION NO.1 ORDER
2025



DocuSigned by:
Caroline Gutteridge
96C5503DFCA44BA...

1644/25

H:\CH-Minor Works\TRAFFIC REGULATION ORDERS\PARISHES\Dunchurch\PTRO22 020 Symmetry Park Dunchurch\5 Drawings\PTRO22-020-001 Symmetry Park.dwg

<div><div><div>County Highways Minor Works</div><div>Warwickshire County Council</div><div>Shire Hall</div><div>Warwick</div><div>CV34 4RL</div><div>Tel: 01926 410410</div></div><div>www.warwickshire.gov.uk chminorworks@warwickshire.gov.uk</div></div>	NOTES	REV	DATE	BY	CHK	AMENDMENT	Drawing title	Drawn by	Checked by	
		-	--/--/--	-	-	-	Proposed 40mph Speed Limit Symmetry Park Dunchurch Rugby	PM	GVS	
		-	--/--/--	-	-	-		Date	7th Oct 2023	
		-	--/--/--	-	-	-		Scale	NTS @ A3_L	
		-	--/--/--	-	-	-		Project title	Drawing number	
								Symmetry Park, Dunchurch	PTRO22-020-001	
		Based on Ordnance Survey mapping with the permission of the Controller of HMSO © Crown Copyright and database right 2011. Ordnance Survey 100019520. All rights reserved. Unauthorised reproduction infringes copyright and may lead to prosecution or civil proceedings. Warwickshire County Council.								