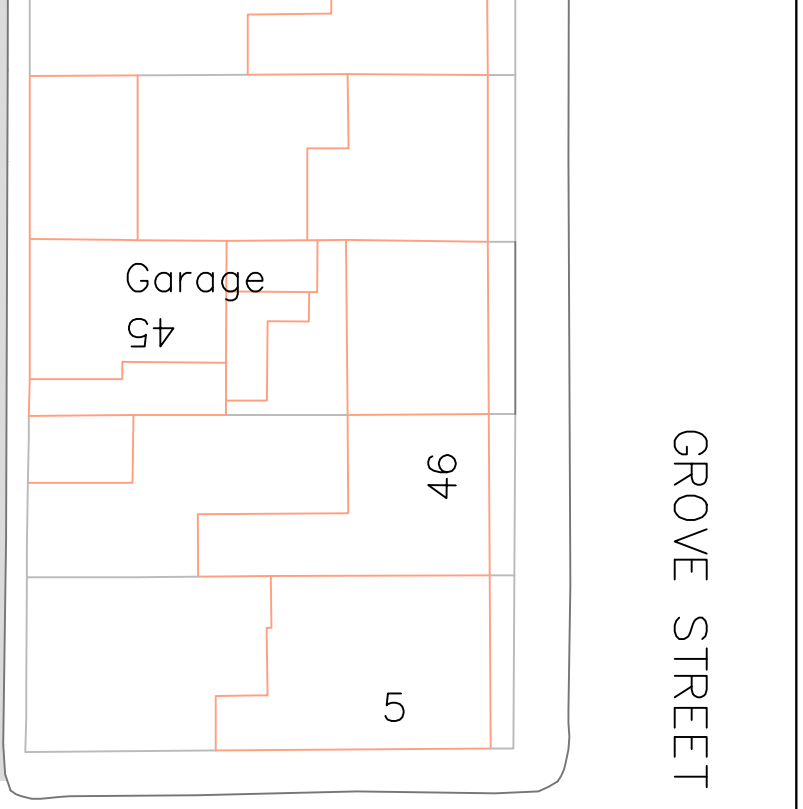
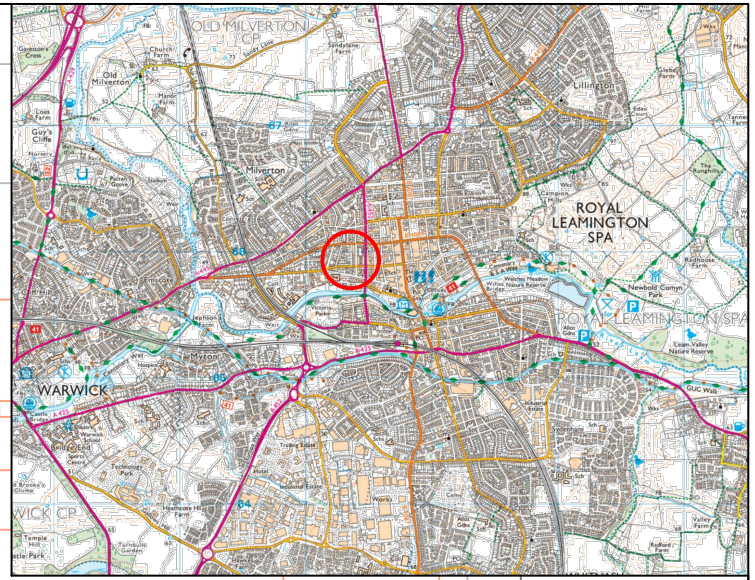


NEW BROOK STREET



GROVE STREET

REGENT STREET

It is proposed to remove the section of parking along New Brook Street as shown to allow the Fire Service access to the flats.

H:\CH-Minor Works\TRAFFIC REGULATION ORDERS\CPE PARKING\Warwick\Consolidation 2017\15-Annual Programme\Statutory Consultations\PTRO23-029.dwg

REV	DATE	BY	CHK	AMENDMENT	REV	DATE	BY	CHK	AMENDMENT	REV	DATE	BY	CHK	AMENDMENT
-	--/--	-	-	-	-	--/--	-	-	-	-	--/--	-	-	-
-	--/--	-	-	-	-	--/--	-	-	-	-	--/--	-	-	-

County Highways Minor Works
 Warwickshire County Council
 Shire Hall
 Warwick
 CV34 4RL
 Tel: 01926 410410

www.warwickshire.gov.uk
chminorworks@warwickshire.gov.uk

NOTES

Based on Ordnance Survey mapping with the permission of the Controller of HMSO
 © Crown Copyright and database right 2011. Ordnance Survey 100019520.
 All rights reserved.
 Unauthorised reproduction infringes copyright and may lead to prosecution or civil proceedings.
 Warwickshire County Council.

Drawing title

Proposed double yellow lines

New Brook Street
Leamington

Project title

Warwick District CPE Consultations 2024

Drawn by **BD** Checked by **GS**

Date **31 October 2024**

Scale **NTS @ A4P**

Drawing number **PTRO23-029-10**