

SKILLS FOR EMPLOYMENT WARWICK DISTRICT FACT SHEET 2019



This factsheet provides an easy-to-access overview for pupils and teachers of the current and future employment and skills situation using the latest data.

SKILLS MOST DEMANDED IN JOB VACANCIES

Customer Service
Teamwork
Sales
Budgeting

Project Management
Teaching
Secretarial Skills
Accounting



LARGEST EMPLOYERS

South Warwickshire NHS Foundation
National Grid Electricity
National Grid Gas Plc
IBM UK Ltd
Warwickshire County Council

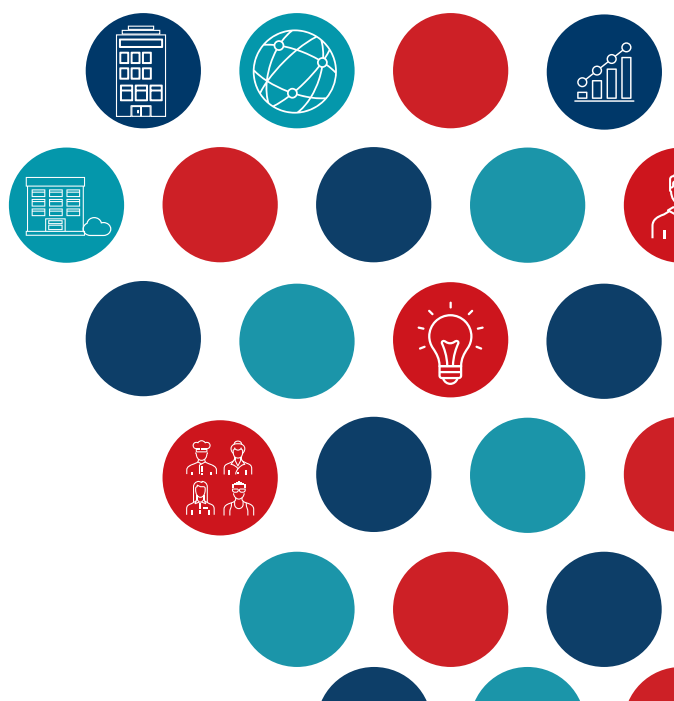
Educaters Limited
Warwickshire College
Bowdraper Limited
Telent Ltd
Baxi Heating UK Ltd



EMPLOYERS ADVERTISING THE MOST JOB VACANCIES

University Of Warwick
National Health Service
Warwickshire College
National Grid
Telent Technology Services Limited

IBM Corporation
Warwickshire County Council
Leamington Spa Commercial
Calor Gas Limited
Superprof



KEY FOR INFORMATION BELOW

Those in red are most at risk of automation in future leading to a reduction in demand for employees, as machinery/control systems replace the need for such physical human efforts. Those in blue may also be affected, but to a lesser extent. Those in black are considered to be extremely low risk and unlikely to be effected by automation.

● = High risk of automation ● = Potential risk of automation ● = Low risk of Automation

INDUSTRIES CURRENTLY EMPLOYING THE MOST PEOPLE

- Business Support Services
- Health
- Retail Trade
- Education
- Wholesale Trade
- Food & Beverage Services
- Construction
- Public Administration & Defence
- IT Services
- Residential & Social

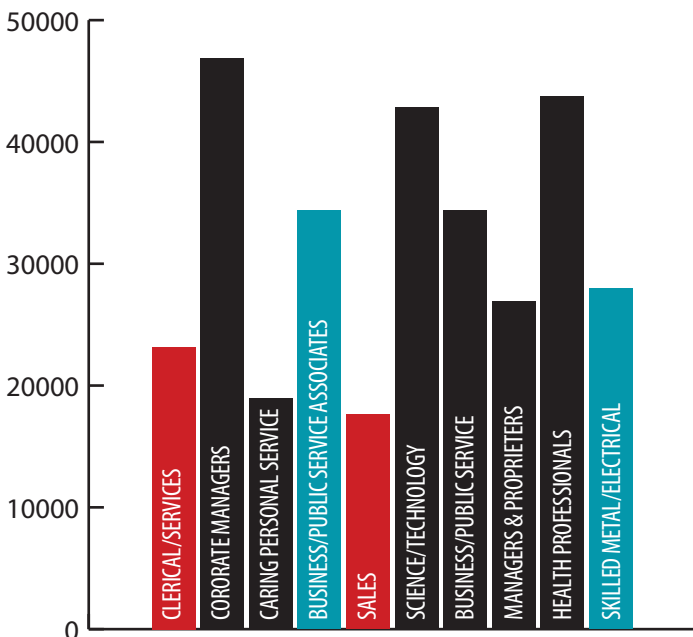
This factsheet is produced by Warwickshire County Council's Economy & Skills team as part of the Council's £3 million Skills for Employment programme to improve the employability skills of young people and help businesses recruit to address skills shortages.

Enquiries about this factsheet should be sent to: skillsforemployment@warwickshire.gov.uk

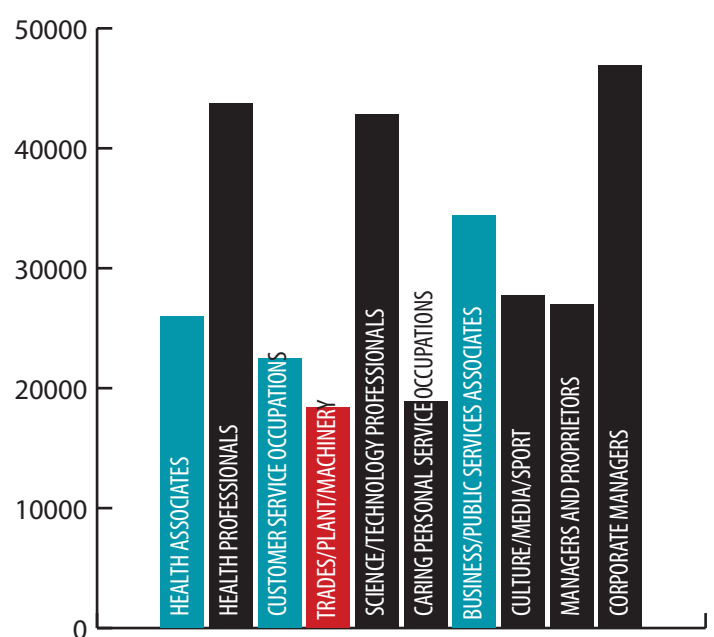
INDUSTRIES FORECAST TO GROW MOST IN NEXT 5 YEARS

- Food & Beverage Services
- Electronics
- Real Estate
- Warehousing & Postal
- Legal & Accounting
- Land Transport
- Arts
- Motor Vehicles Trade
- Accommodation
- Business Support Services

MOST POPULAR OCCUPATIONS BY ANNUAL WAGE (£)



OCCUPATIONS FORECASTED TO HAVE THE LARGEST EMPLOYMENT GROWTH BY ANNUAL WAGE (£)



Sources: Labour Insight 2019, LEFM 2019, IDBR 2018, Emsi 2017 & 2019.