



# **ACTIVITY PACK**

## **2**

**A variety of puzzles and activities to stimulate the brain and improve memory skills**

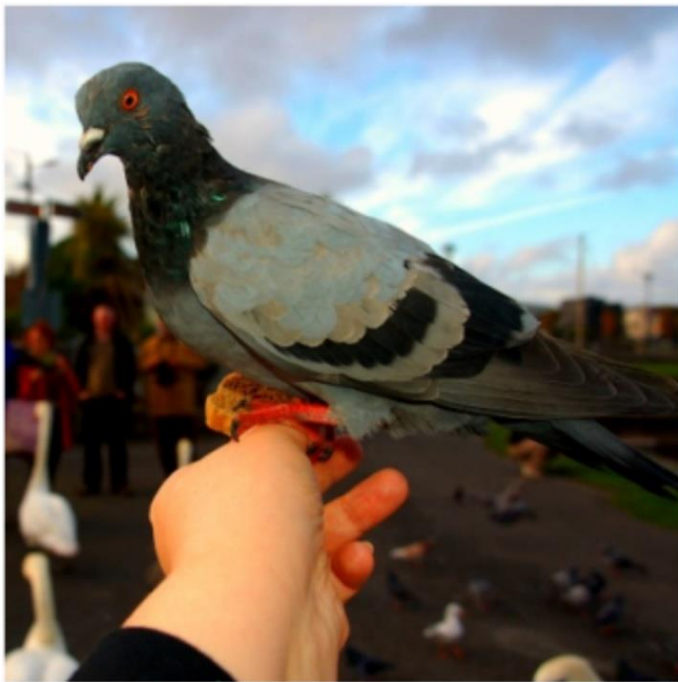
**We hope you enjoy them**

## Spot the Difference

Can you spot the **13** differences from picture 1 to picture 2

Answers on back page

Picture 1



Picture 2



## Wordsearch

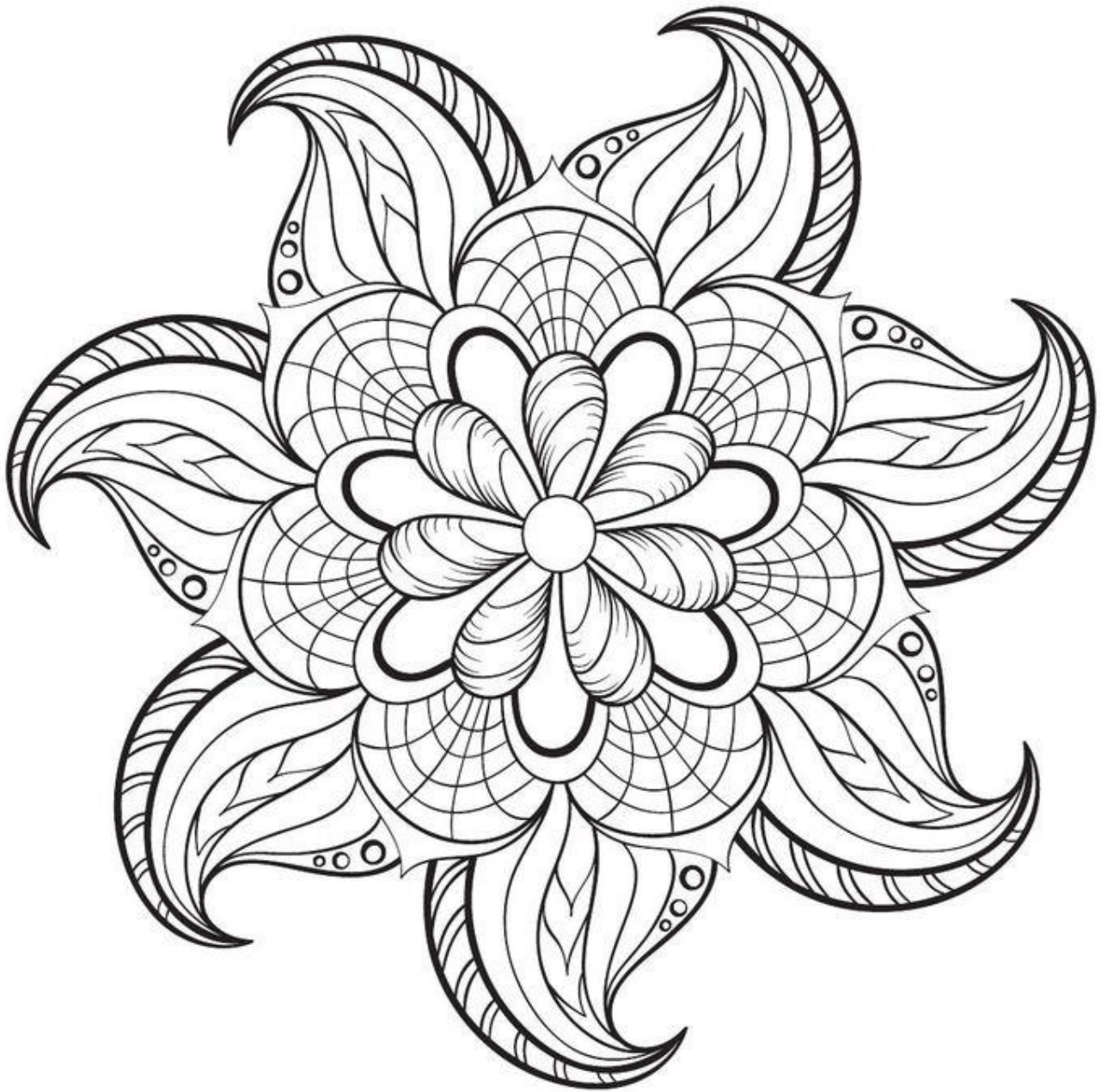


# Flower Power



ASTER	HONEYSUCKLE	ORCHID
CROCUS	LAVENDER	PANSY
DAFFODIL	LILAC	SUNFLOWER
DAISY	LILY	TULIP
GERANIUM	MARIGOLD	VIOLET

## Mindfulness Colouring



## Odd One Out

Can you spot the odd one out and say why?

Answers on back page

1.



Odd one out is ..... because.....

2.



Odd one out is ..... because.....

3.



Odd one out is ..... because.....

4.



Odd one out is ..... because.....

# Numeracy Logic

Answers on back page



= 5



= 10



= 20



= 2

---



+



+



+



=



+



-



+



=



+



-



-



=



+



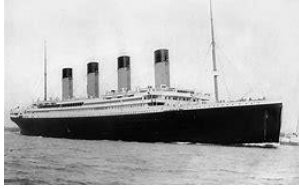
+



+



=



## History – Reading

### Titanic

RMS Titanic was a British passenger liner operated by the White Star Line that sank in the North Atlantic Ocean in the early morning hours of 15 April 1912.

Titanic sunk after striking an iceberg during her maiden voyage from Southampton to New York City.

Of the estimated 2,224 passengers and crew aboard, more than 1,500 died, making the sinking one of modern history's deadliest peacetime commercial marine disasters.

After leaving Southampton on 10 April 1912, Titanic called at Cherbourg in France and Queenstown in Ireland, before heading west to New York.

On 14 April, four days into the crossing and about 375 miles (600 km) south of Newfoundland, she hit an iceberg at 11:40 p.m. ship's time.

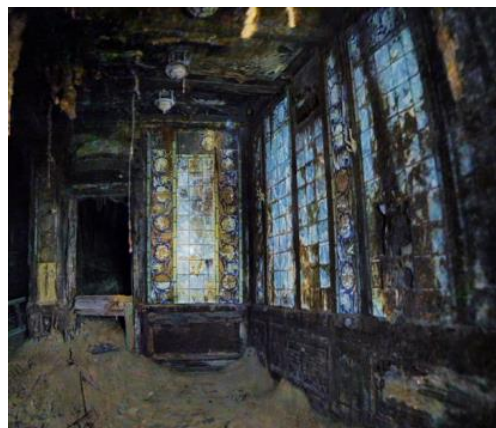
The collision caused the hull plates to buckle inwards along her starboard (right) side and opened five of her sixteen watertight compartments to the sea. Meanwhile, passengers and some crew members were evacuated in lifeboats, many of which were launched only partially loaded.

At 2:20 a.m., she broke apart and foundered with well over one thousand people still aboard. Just under two hours after *Titanic* sank, the Cunard liner RMS Carpathia arrived and brought aboard an estimated 705 survivors.

Fares varied and were dependant on class and season. Third Class fares from London, Southampton, or Queenstown cost £7 5s (equivalent to £700 today) while the cheapest First Class fares cost £23 (£2,300 today). The most expensive First Class suites were to have cost up to £870 in high season (£87,000 today).

## Titanic Under the Sea

The wreck of Titanic is in such poor condition it cannot be raised. The ship is broken into pieces and has been rusting at the bottom of the Atlantic ocean under extreme pressure for 105 years. The bow section is sunk into the mud almost 40 feet deep so remains on the sea bed.





## Beatles Songs

Fill in the blank on the song title

Answers on back page

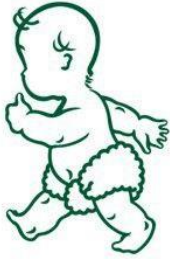
- 1) Love, Love me .....
- 2) I want to ..... your hand
- 3) Hey .....
- 4) Strawberry ..... forever
- 5) ..... In the sky with .....
- 6) Here comes the .....
- 7) A ..... Days night
- 8) All you ..... is .....
- 9) ..... to ride
- 10) Penny .....

## Name the Logo – Brands

Answers on back page



\_\_\_\_\_



\_\_\_\_\_



\_\_\_\_\_



\_\_\_\_\_

## Mix and Match Flowers

Can you match the correct name to the flower by drawing a line from the picture to the correct name



Lily

Daffodil



Daisy

Crocus



Rose

Tulip



Dahlia

Poinsettia



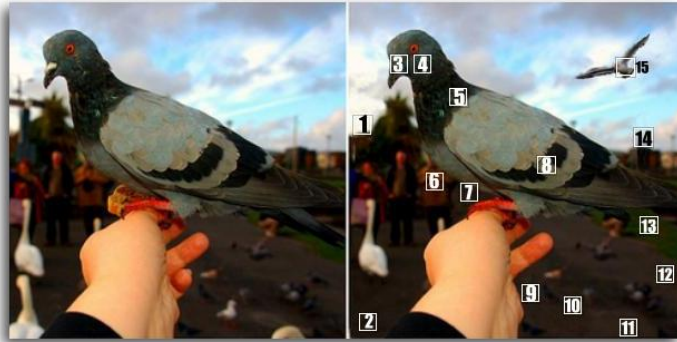
Iris

Carnation



## Answers

### Spot the Difference



### Name the Logo – Brands

- 1) Macdonalds
- 2) Fairy
- 3) Windows
- 4) Shell

### Beatles Songs – Fill in the blank

- |                    |                |
|--------------------|----------------|
| 1) Do              | 6) Sun         |
| 2) Hold            | 7) Hard        |
| 3) Jude            | 8) Need / Love |
| 4) Fields          | 9) Ticket      |
| 5) Lucy / Diamonds | 10) Lane       |

### Numeracy Logic

- 1) 27
- 2) 18
- 3) 3
- 4) 42

### Odd One Out

- 1) Banana because all others are from the citrus family
- 2) Bike because all the other vehicles have more than 2 wheels
- 3) Gorilla because all others are farm animals
- 4) Chicken because all other give birth to live young