

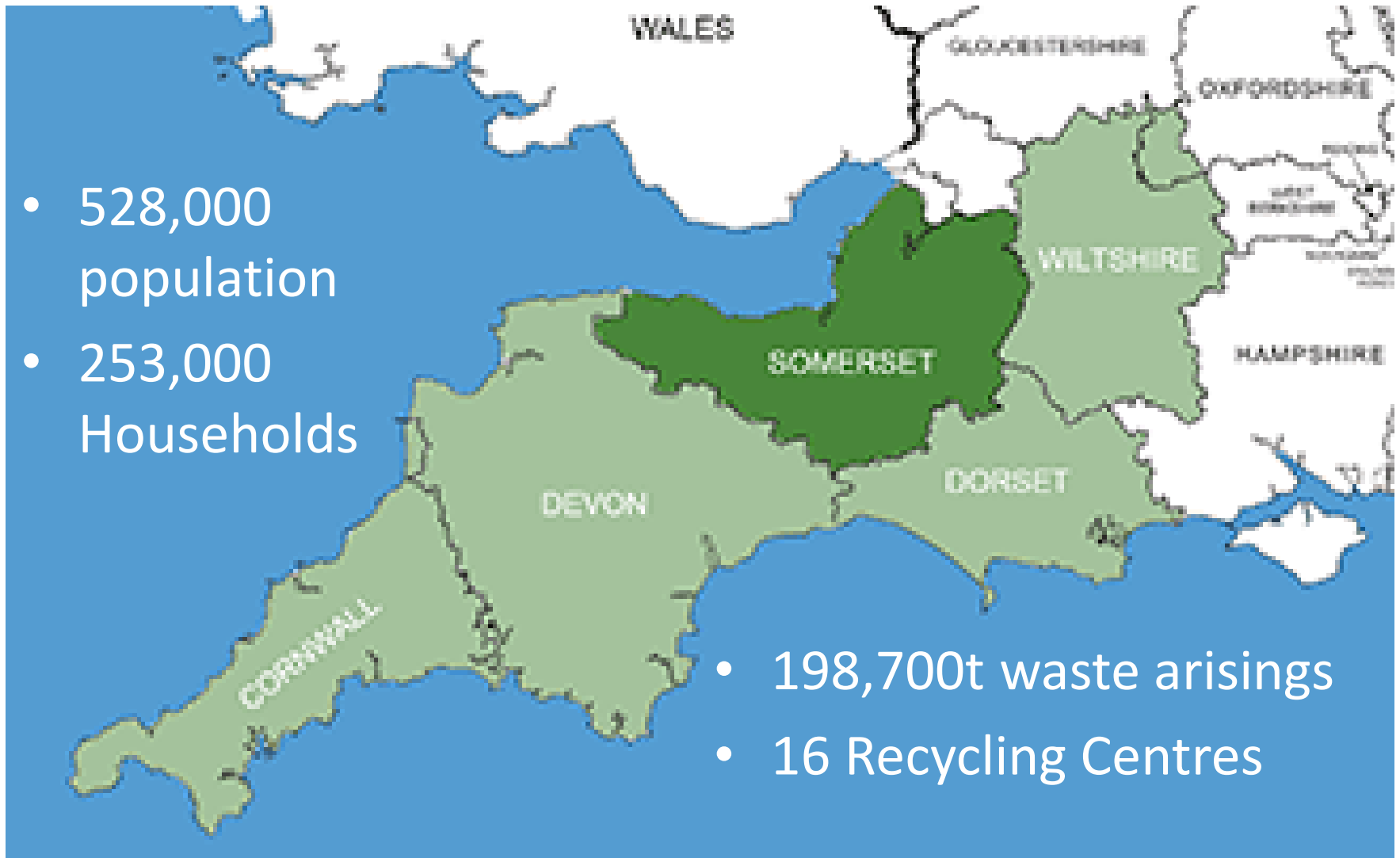
# Warwickshire Waste Partnership Conference

## 1<sup>st</sup> March 2017

**SWP News at 10**

**Steve Read**

[steve.read@somersetwaste.gov.uk](mailto:steve.read@somersetwaste.gov.uk)



# The Somerset Waste Board

- A Joint Committee of the 6 Authorities formed October 2007
- Inter Authority Agreement
- Delegated responsibility for all waste collection and disposal matters
- Served by a single client unit known as the SWP
- The first of it's kind covering a whole county.

# Somerset Waste Partnership

- Single Client Team
- Hosted by Somerset County Council as administering authority
- 22 staff
  - Operations
  - Strategy & Development
  - Customer Services and Press, Publicity & Promotion

# Shared Staff Resources

- MD shared with Gloucestershire Joint Waste Team
- 0.6FTE Somerset / 0.4FTE Gloucestershire
- Head of Operations Project Support to
  - Gloucester City Council
  - Tewkesbury Borough Council
  - Other work for Cheltenham and W Oxfordshire







# Key Contracts

**Collection  
to 2021**



**Disposal & RCs  
to 2022**

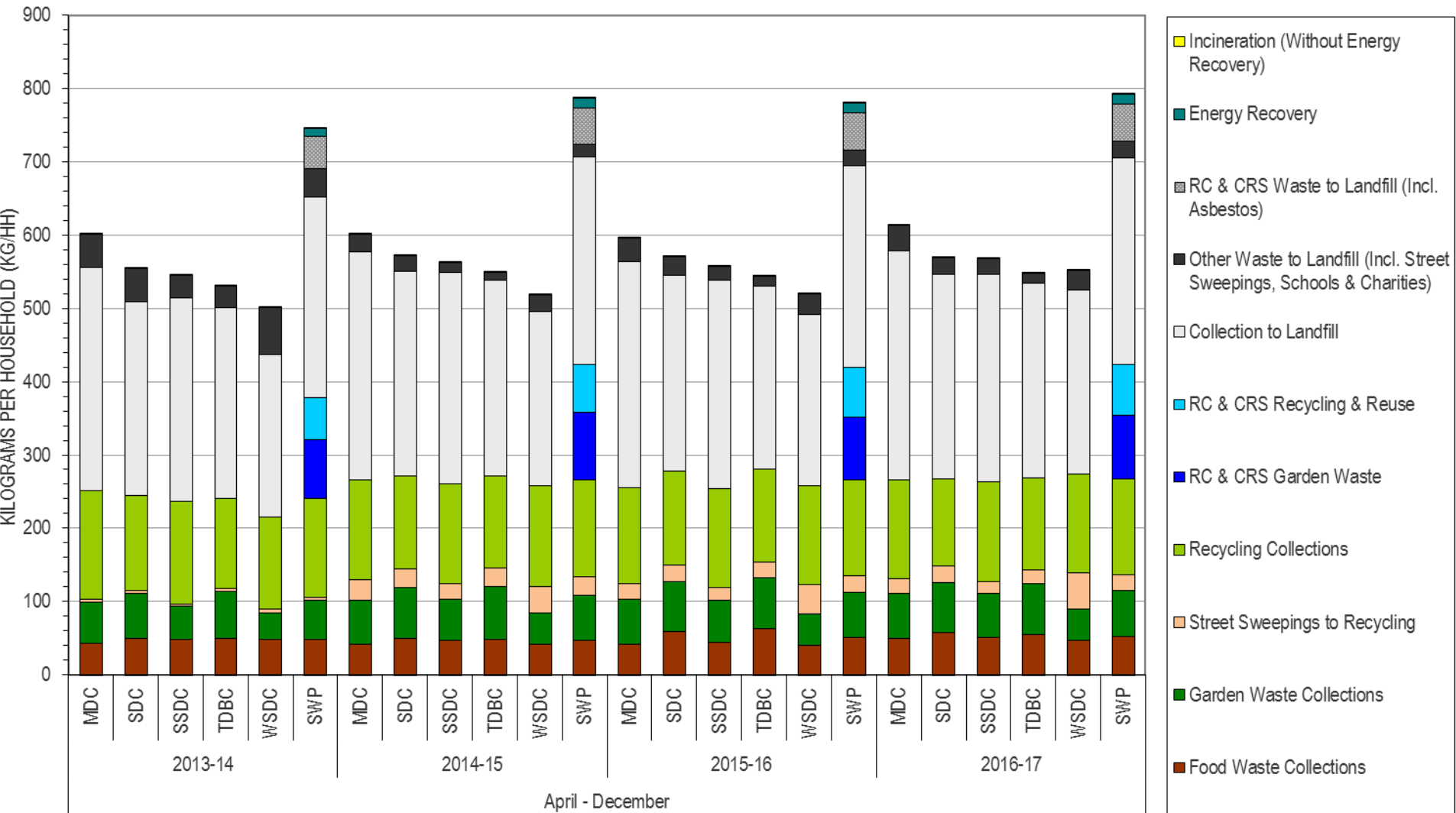


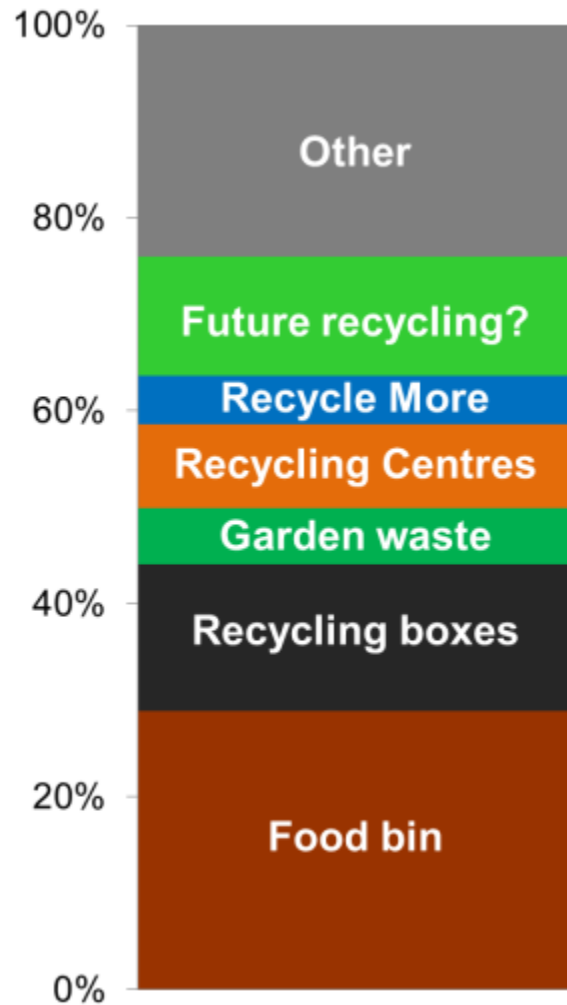
Since 2011	Week A	Week B
<b>Food</b>		
<b>Recycling</b>		
<b>Garden</b>		
<b>Refuse</b>		

## Tonnage Comparisons for April - December 2016-17 compared to the same periods in 2012-13 to 2015-16

Material & Source	Tonnage Comparisons April - December					Weight Variance	Percentage Change
	2012-13	2013-14	2014-15	2015-16	2016-17		
Total Household Arisings	186,443	184,576	195,266	195,851	198,745	2,894	1.48%
Total Household Landfilled	87,447	87,495	87,214	86,929	88,818	1,889	2.17%
Non-Household Landfilled	2,428	3,849	4,191	4,267	3,378	-889	-20.83%
Bottom Ash (From Incineration)	0	0	45	44	46	2	4.55%
Total LACW Landfilled	89,875	90,461	90,897	90,650	91,686	1,036	1.14%
Total LACW	189,346	188,569	200,494	201,321	202,868	1,547	0.77%
<b>NI 191: Residual Household Waste per Household (kg)</b>	<b>361.64</b>	<b>372.57</b>	<b>367.29</b>	<b>360.78</b>	<b>368.50</b>	<b>7.72</b>	<b>2.14%</b>
<b>NI 192: Household Waste Reused, Recycled &amp;</b>	<b>51.31%</b>	<b>51.15%</b>	<b>53.36%</b>	<b>53.79%</b>	<b>53.49%</b>		<b>-0.30%</b>
<b>NI 193: LACW Landfilled</b>	<b>47.47%</b>	<b>47.97%</b>	<b>45.34%</b>	<b>45.03%</b>	<b>45.19%</b>		<b>0.17%</b>
Performance Increase >							
< Performance Decrease							

# TOTAL HOUSEHOLD WASTE ARISING IN SOMERSET KG/HH COMPARISON 2013-14 - 2016-17





**Thank you for recycling**

**Recycling your food waste could give you gas...**

By recycling your food waste you are helping fuel homes. The food waste we collect from the kerbside is transported to a new, state-of-the-art plant in Gloucestershire, where it is used to make a sustainable, non-fossil fuel based energy for distribution to the local grid. That's enough energy to supply over 8,100 properties!

We'd like to say a big 'thank you' to those of you who have helped recycle 11,000 tonnes of food waste in Gloucestershire in the last 12 months, helping save £1 million in council tax!



Printed in Gloucestershire on 100% recycled paper using vegetable oil inks and electricity generated from 100% renewable sources. Please recycle this bin hanger.



**No food waste**

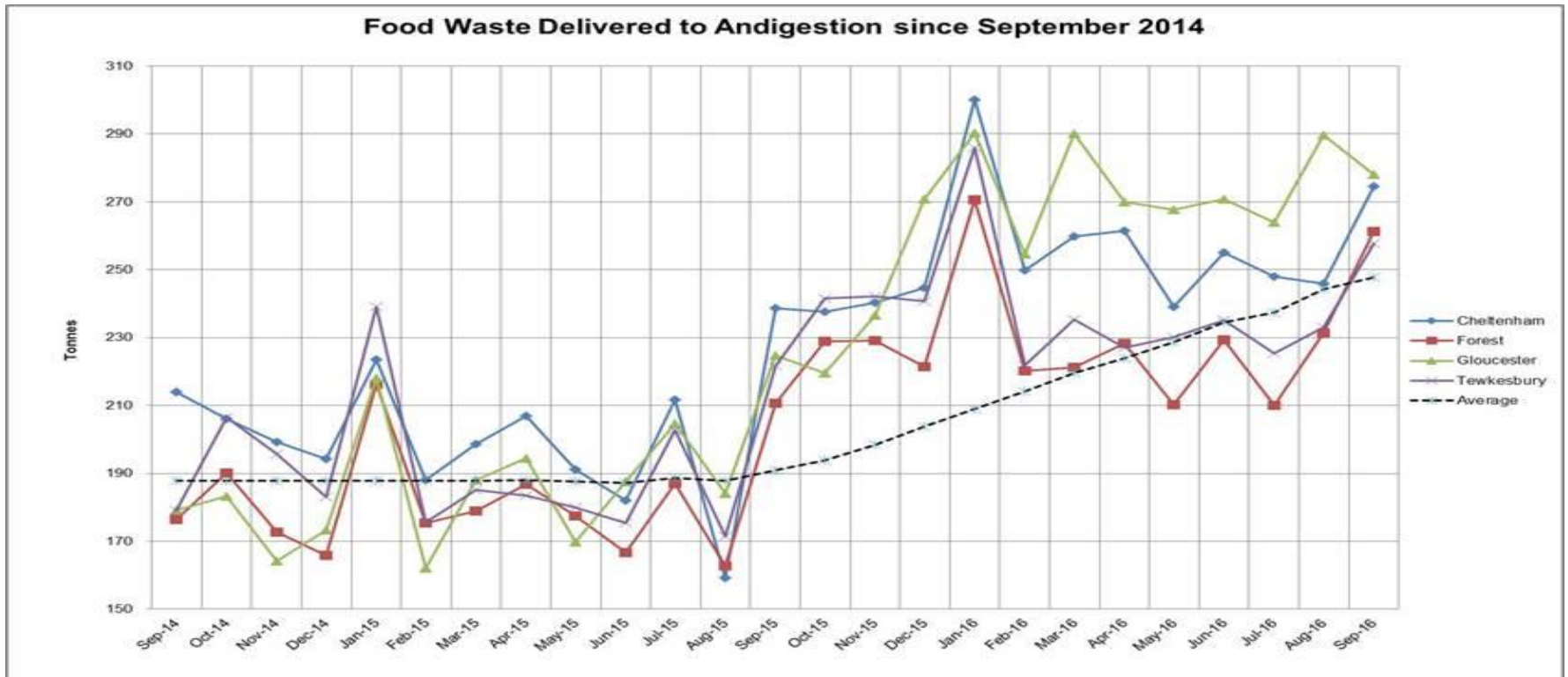
**Please use your weekly food waste recycling service**

**Need a caddy? Call 01594 810000**  
or email [council@fdean.gov.uk](mailto:council@fdean.gov.uk)

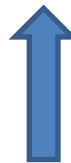
Food Waste  
Initiatives Somerset  
and Gloucestershire  
2015



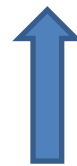
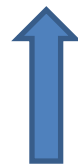
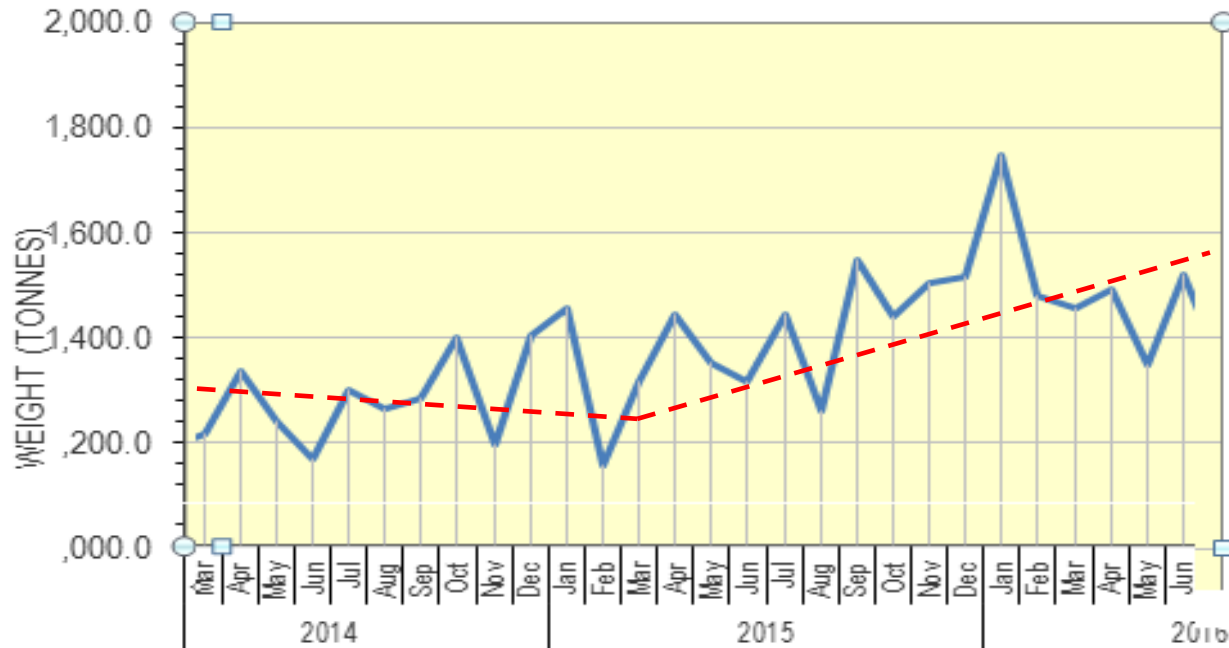
# Food waste diversion in Gloucestershire (four districts) Sep 2014 - Sep 2016



Gloucestershire  
initiative  
autumn 2015



# Food waste diversion in Somerset ( five districts) March 2014 - June 2016



Somerset  
initiative spring &  
autumn 2015



## New or re-energised users?

- Proxy for new users = set out rates
  - = demand for caddies
    - 4-5% of households requested food waste caddies
    - c20% increase in tonnages
- A few calls: “why are you picking on me?”
- Unable to determine whether this has any food waste reduction behaviour.

# Recycle more

We are launching a special trial in your area so that everyone can recycle more. Recycling is good for our environment and every tonne recycled saves Somerset over £100 per tonne in avoided landfill costs.



**Great news,  
trials to recycle  
more material  
types**

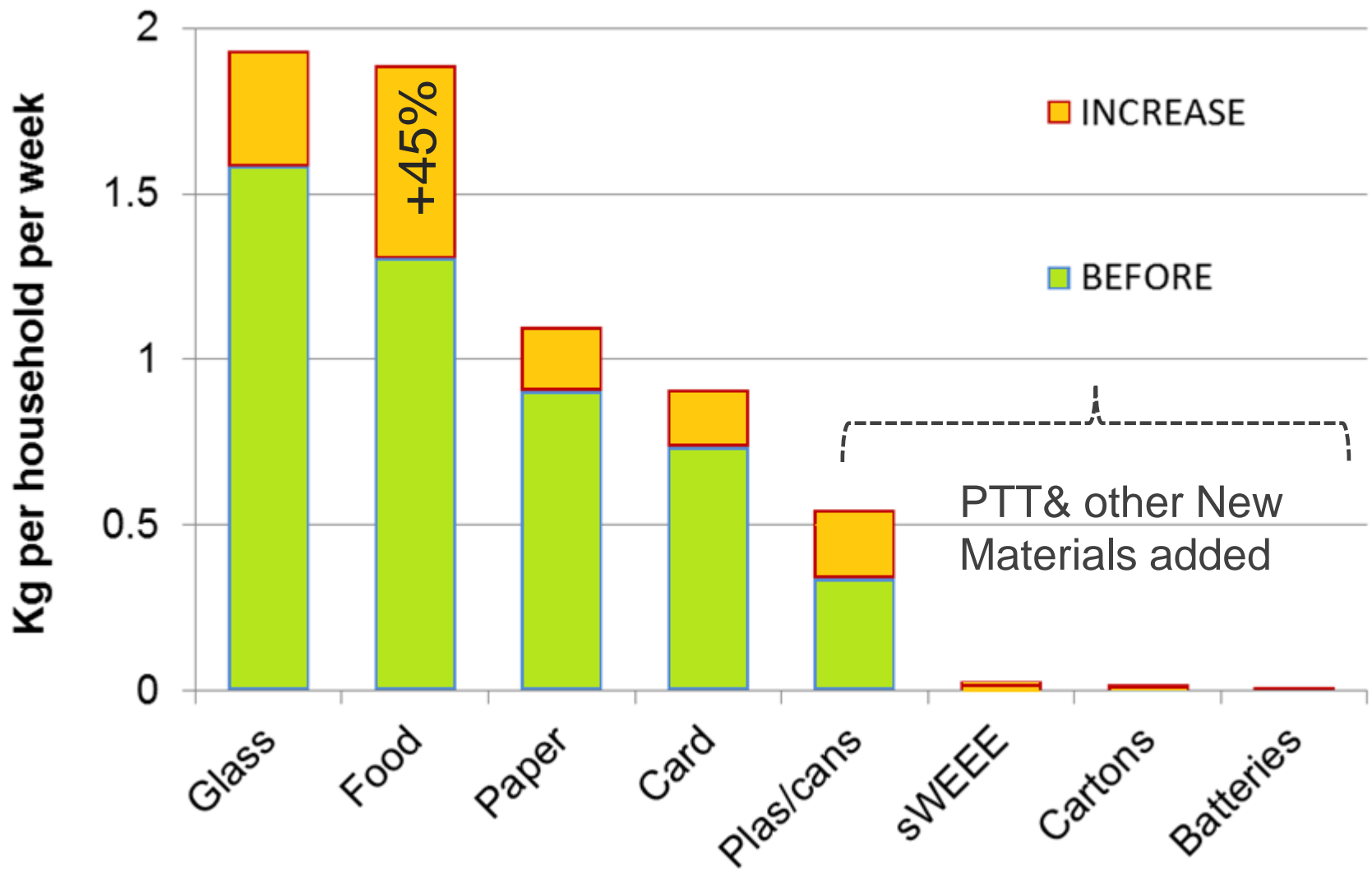
Trials	SP1 (3 rounds)	SP2 (4 rounds)	SP3 (2 rounds)
Dry recycling	Weekly	Fortnightly	Weekly
Refuse	Fortnightly	Fortnightly	3-Weekly

**Recycle More trials**

5,213 households

Trials	SP1 (3 rounds)	SP2 (4 rounds)	SP3 (2 rounds)
Better	91%	72%	81%
Same or Don't Know	7%	16%	13%
Worse	2%	12%	6%

**Recycle More trials**  
**Survey responses**



*Recycle More* trial with  
 3-weekly refuse collection 1100 households

# Conclusions

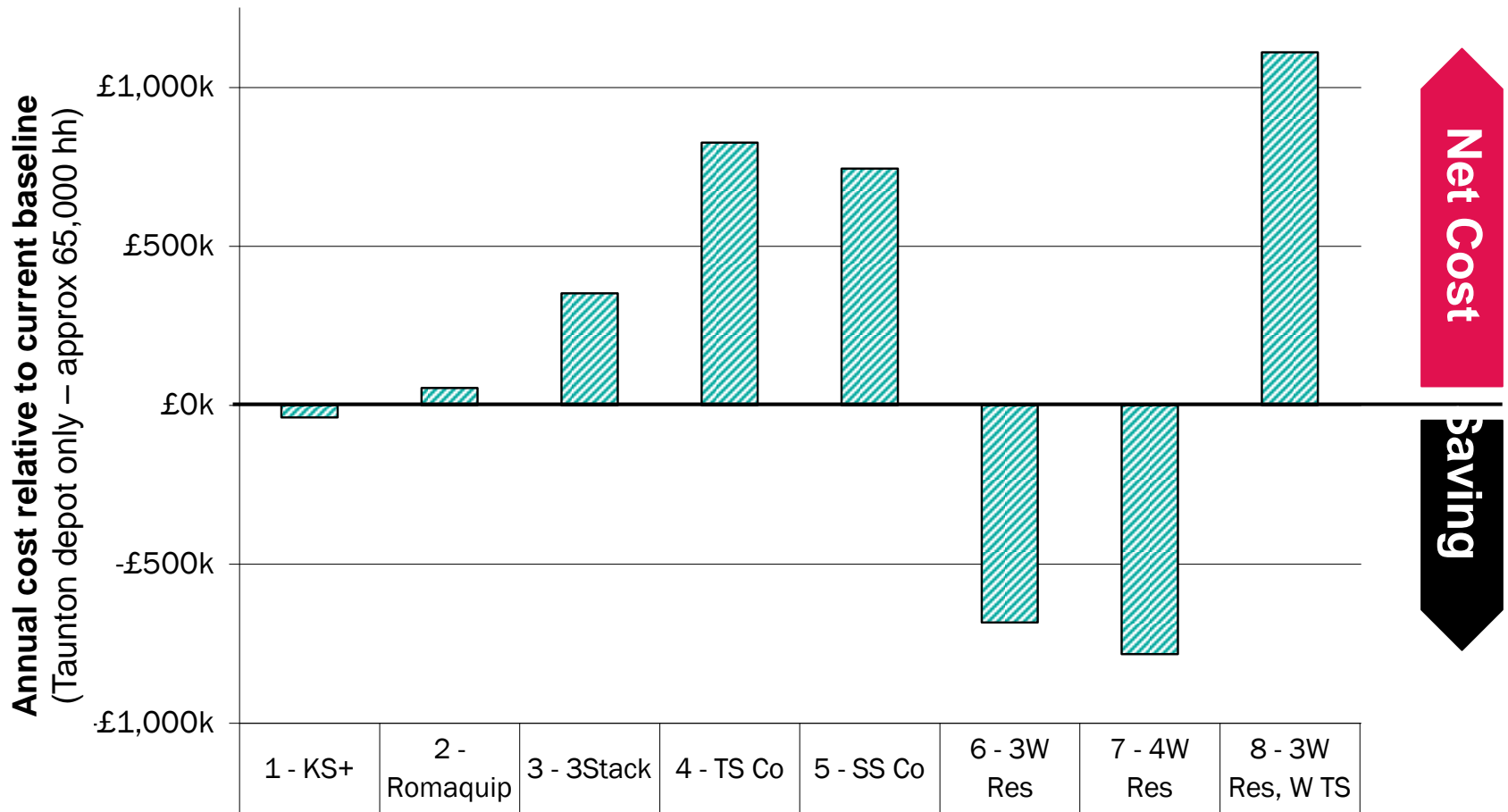
- Good behaviour tends to decline over time
- Simple reminder has an impact on food waste diversion behaviour for some households
- Service change is an opportunity for step change in performance
  - Adding a wider variety of materials at kerbside
  - Enables capacity reduction
  - Significant impact on behaviour
- Even if food waste collection well established

Recycle More collection cycles	Week A	Week B	Week C
<b>Food</b>			
<b>Paper, glass, foil,</b> <b>small electricals,</b> <b>batteries, card,</b> <b>plastics &amp; cans,</b> <b>textiles &amp; shoes</b>			
<b>Refuse: 3-weekly</b> <b>Garden: fortnightly</b>			

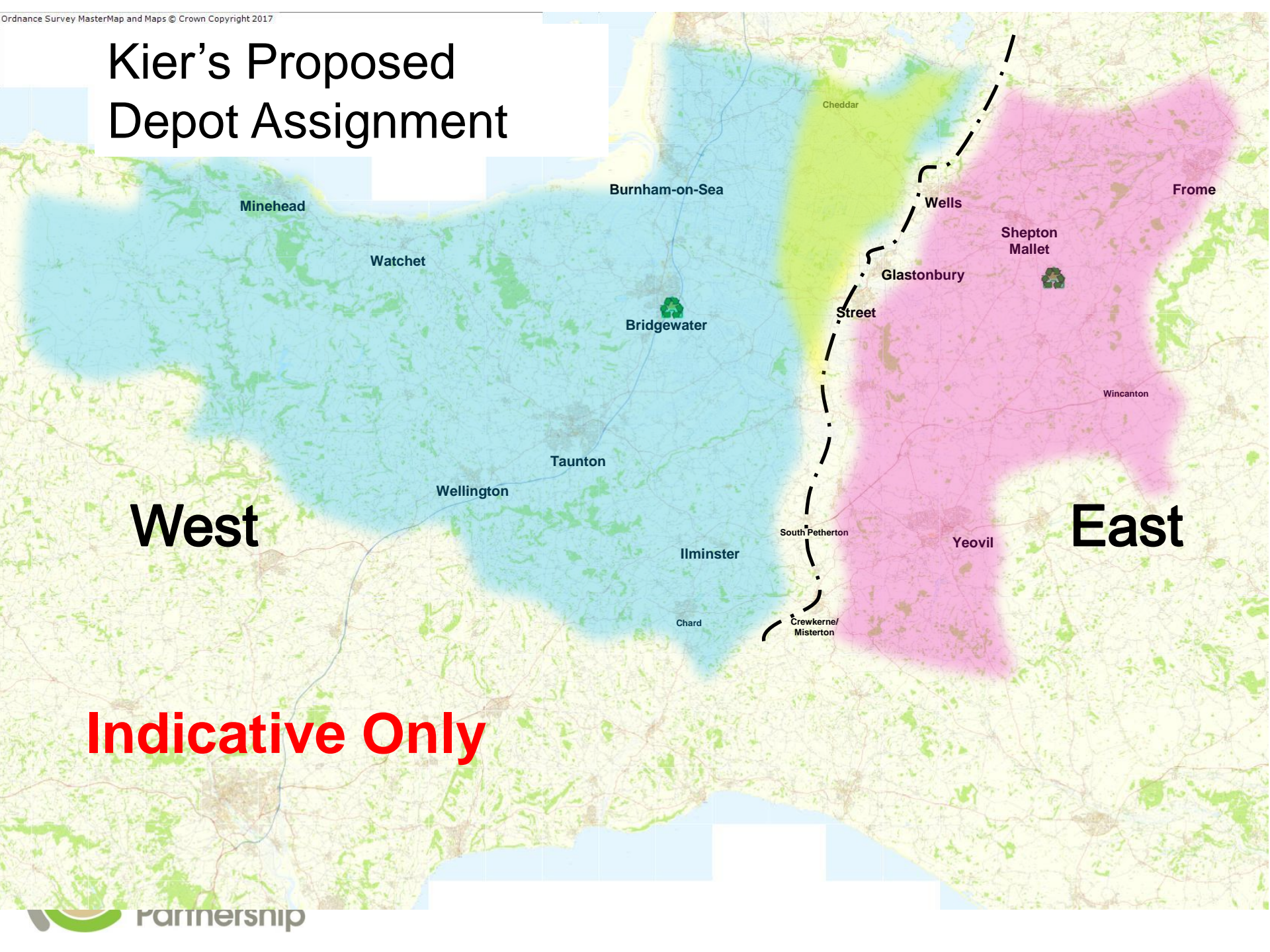
# Options appraisal – financial results

REFUSE: Fortnightly - - - - - | 3-w 4-w 3-w

RECYCLE: Kerbside sort - - - | Comingled Kerb. sort Com



# Kier's Proposed Depot Assignment



**West**

**East**

**Indicative Only**

## **Net saving when rolled out: approx. £1.7m pa**

- Adds plastic PTT, small electricals and batteries
- Not cartons (costs exceed benefits)
- Not black plastic

## **Roll out one-off costs : approx. £2.2m**

- Containers and delivery
- Communications
- Operational transition costs



# Avonmouth EfW Contract

- Viridor's last planned EfW facility - 320kt pa capacity
- Anchor Contract c 120kt pa (less with recycle more)
- Gate fee + electricity income share above threshold
- 25 years with review points
- Via 2 transfer stations at current landfill sites
- Heads of Terms signed February 2017
- Contract signing on course for mid-March
- WCA members fully involved in decision making process

**Key**

-  West Somerset Council
-  Taunton Deane Borough Council
-  Proposed New Council Boundary



**Map showing the existing and proposed new geographical boundaries.**

# Proposed New Council for West Somerset & Taunton Deane Areas

- Benefits of having a waste partnership
- No implications for service delivery to the customer
- No implications for waste collection contract
- Review Inter Authority Agreement
- Change to cost apportionment formula in cost sharing mechanism.

# Issues for the Future

- Rolling Out Recycle More
- Hinkley C
  - 5000 additional residents at peak
  - Traffic impacts
  - HGV driver shortages
- Who are the next generation of champions?
- Will the circular economy proposals get adopted?

# Thank you

steve.read@somersetwaste.gov.uk

@steveread13