



Warwickshire Mineral Safeguarding Area - Cement raw materials

Warwickshire Mineral Safeguarding Areas (MSAs)

Geological units from figures A2 to A9 were selected and refined during the consultation phase of the project and buffered by the amount specified in table 1, page 6 of this report, in order to produce this MSA map. MSAs stop at the Warwickshire county boundary.

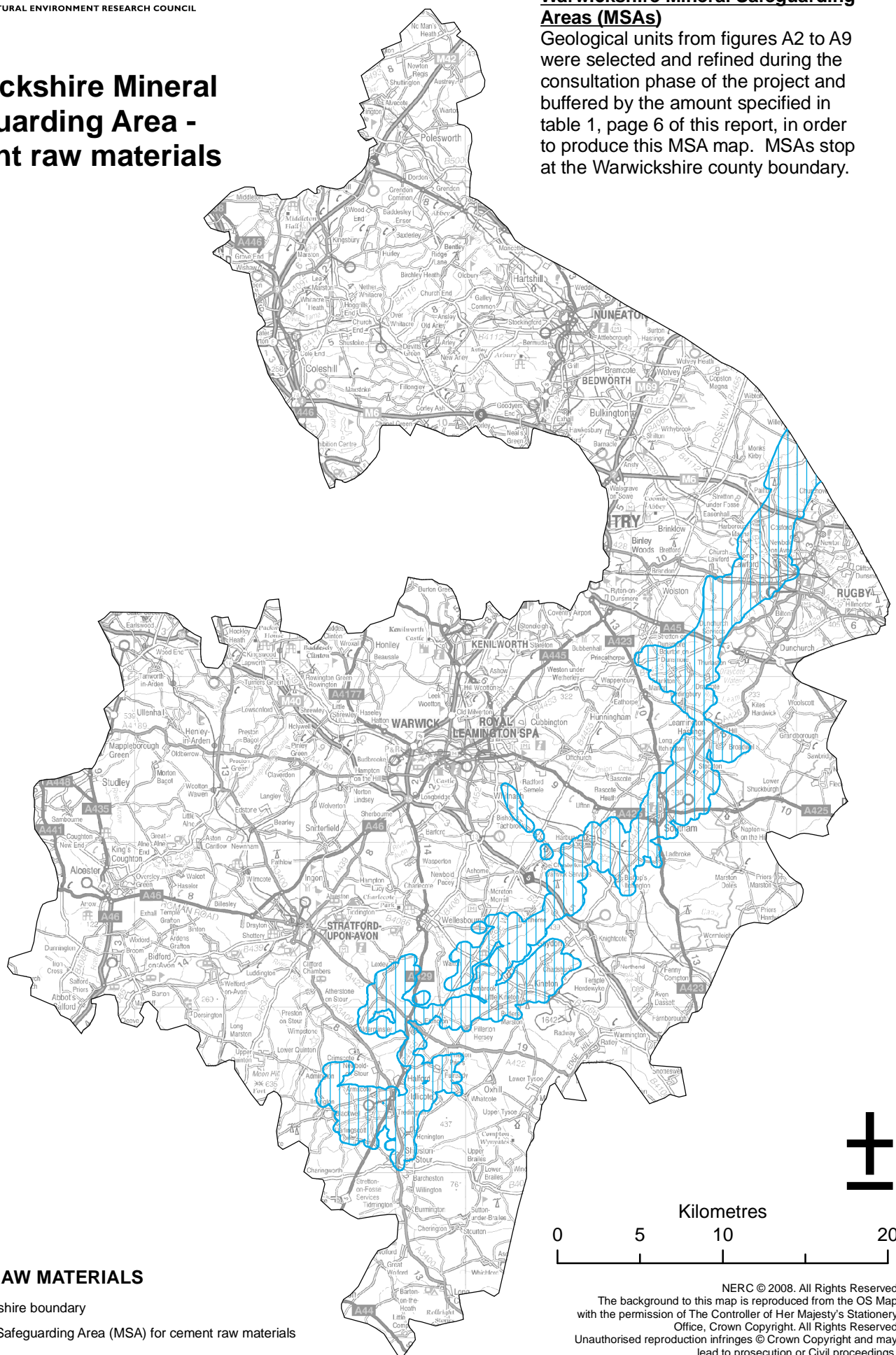


Figure A14: Warwickshire MSA - Cement raw materials