



Warwickshire - Building stone

Consultation phase maps

These maps are part of the consultation phase of the "Delineating Warwickshire Mineral Safeguarding Areas" project. They show geological units from the 'BGS DiGMapGB-50' geological linework and the 1999 published Warwickshire / West Midlands Mineral Resources map. This linework will be refined through consultation to incorporate knowledge from stakeholders in order to produce Mineral Safeguarding Area maps.

Active sites are from the BGS database of active quarries called 'BRITPITS'.

The border around the administrative boundary shows minerals up to 5km beyond the Warwickshire boundary in order to consider the extent of the minerals straddling the Mineral Planning Authority (MPA) boundary.

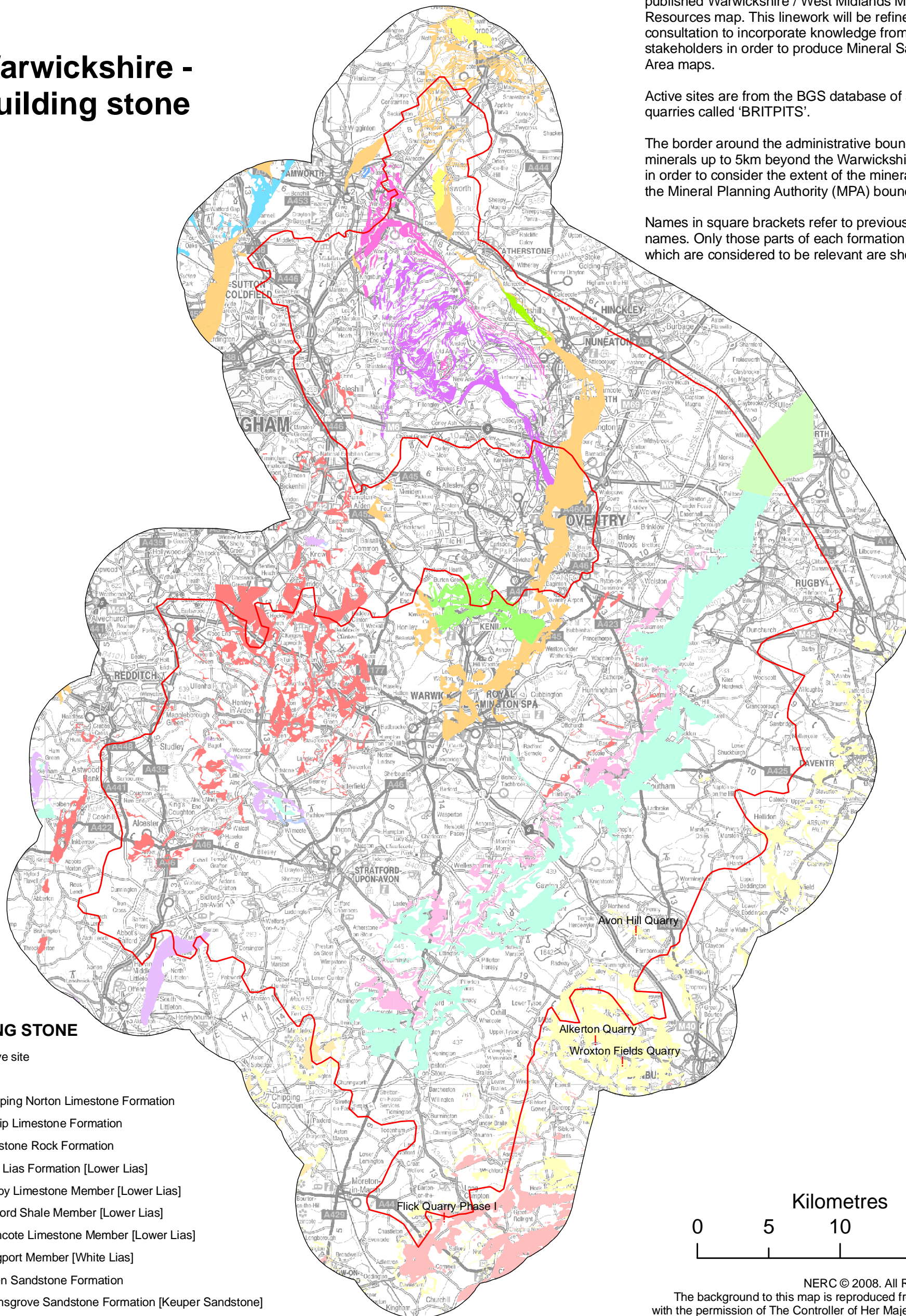
Names in square brackets refer to previously used names. Only those parts of each formation or group which are considered to be relevant are shown on the map.

BUILDING STONE

! Active site

Bedrock

- Chipping Norton Limestone Formation
- Birdlip Limestone Formation
- Marlstone Rock Formation
- Blue Lias Formation [Lower Lias]
- Rugby Limestone Member [Lower Lias]
- Saltford Shale Member [Lower Lias]
- Wilmcote Limestone Member [Lower Lias]
- Langport Member [White Lias]
- Arden Sandstone Formation
- Bromsgrove Sandstone Formation [Keuper Sandstone]
- Polesworth Formation [Bunter Pebble Peds]
- Kenilworth Sandstone Formation
- Envile Member [Envile Beds]
- Alveley Member [Keele Formation]
- Whitacre Member [Coventry Sandstone]
- Halesowen Formation
- Hartshill Sandstone Formation [Hartshill Quartzite]



NERC © 2008. All Rights Reserved
The background to this map is reproduced from the OS Map with the permission of The Controller of Her Majesty's Stationery Office, Crown Copyright. All Rights Reserved
Unauthorised reproduction infringes © Crown Copyright and may lead to prosecution or Civil proceedings.
Licence Number 100019801

Figure A7: Warwickshire - Building stone