



# DEFERRED MEMBER NEWS

## WELCOME TO THE 2025 NEWSLETTER

### for deferred members of the Local Government Pension Scheme (LGPS).

We have produced this newsletter jointly with other LGPS funds. If you would like more information about your pension benefits, contact Warwickshire Pension Fund.



## FREQUENTLY ASKED QUESTIONS

### What are deferred benefits?

Deferred benefits are benefits that are set aside to be taken at a later date. If you stop paying LGPS contributions, or finish working for an employer in the LGPS, we work out the deferred benefits that you will delay taking until a future date.

The amount you can see on your annual benefit statement is the pension we have worked out for you from your normal pension age (NPA). If you are over 65 and older than your NPA, your annual statement will include increases for retiring after your NPA.

### What is my NPA?

The date your LGPS pension is due to be paid from, without reductions, is known as your normal pension age (NPA). It is unique to you and based on when you left the scheme.

- If you left after 1 April 2014, your NPA is linked to your State Pension age.
- If you left between 1 October 2006 and 1 April 2014, your NPA is 65.
- If you left before 1 October 2006, your NPA is normally 65 but could be as early as 60.

### When can I take my deferred benefits?

You can take your deferred benefits at any age between 55 and 75, as long as you have left the job those benefits are linked to.

You can take your benefits:

- reduced, at any age between 55 and your NPA (see the note below);
- unreduced, at your NPA;
- with increases, after your NPA and up to age 75 (but if you left the LGPS before 1 April 1998, you must take your pension by the time you reach your NPA); and
- unreduced, at any age before your NPA if you are given access to them because of ill health.

*The Government has announced that the earliest age you can take your pension, other than for ill-health reasons, will increase to 57 from 6 April 2028. See 'The normal minimum pension age (NMPA) is changing' section later in the newsletter for more details.*

## How much will I get if I take my benefits before my NPA?

If you take your deferred benefits before your NPA, they'll normally be reduced because your pension will be paid for longer. The following table shows the percentage your pension will be reduced by if you take it earlier than your NPA. If the number of years is not exact, the reductions will be adjusted accordingly.

Years early	Pension reduction	Lump sum reduction
0	0%	0%
1	4.9%	1.7%
2	9.3%	3.3%
3	13.5%	4.9%
4	17.4%	6.5%
5	20.9%	8.1%
6	24.3%	9.6%
7	27.4%	11.1%
8	30.3%	12.6%
9	33%	14.1%
10	35.6%	15.5%
11	39.5%	Doesn't apply
12	41.8%	Doesn't apply
13	43.9%	Doesn't apply

Our benefit calculators in the online portal can help you work out how much your pension might be with these reductions.

## I can't work because of ill health, so can I take my deferred benefits?

If you can't work because of ill health, you may be able to have your benefits paid in full, with no reductions, whatever your age. For your application to be approved, you must be permanently incapable of doing the job you were in when you stopped paying LGPS contributions and your benefits were deferred. If you left the LGPS after 31 March 2008, your employer would also need to consider whether you are likely to be able to do any gainful employment in the next three years.

Gainful employment is paid work of at least 30 hours a week that lasts for a year or more.

You will need to contact your former employer if you think this applies to you. They must ask an approved independent registered medical practitioner for an opinion to help with the decision on your application.

## Do my deferred benefits keep their value against inflation?

Yes. Each April, the value of your deferred benefits is adjusted, based on the Consumer Price Index (CPI) from the previous September. The standard increase applied from 7 April 2025 was 1.7%.

If you became a deferred member before 23 April 2024, you'll get the full increase. However, if you became a deferred member after that date, your pension increase will normally only be a proportion of the full increase.

## Can I transfer my deferred benefits to another pension scheme?

If you meet certain conditions, you may be able to transfer your deferred benefits to another pension scheme. Transferring your pension is an important decision and one that you should think about carefully. Visit our website to find out more about transferring your pension.

## What happens to my deferred benefits if I die?

A death grant may be paid as a lump sum.

If you stopped paying LGPS contributions before 1 April 2008, the death grant is three times your deferred pension. If you stopped paying contributions on or after

1 April 2008, the death grant is five times your deferred pension. If you are also still paying LGPS contributions for a different job at the time of your death, only the highest death grant will be paid.

Please see the section below for details on how to nominate a beneficiary to receive any death grant that is due or how to update an existing nomination.

A survivor's pension may also be paid to your dependants, such as:

- your husband, wife or registered civil partner;
- any eligible children; or
- someone you live with as if you were married (if you were still paying LGPS contributions on or after 1 April 2008).

You can use our online portal to find out how much your dependants could get.

## How do I update my personal details?

You can update your information by logging in to your online pension account. If you need to change your name, partnership status or gender, we need to see a copy of the relevant legal document.

## ARE YOUR NOMINATED BENEFICIARIES UP TO DATE?

**If you die after leaving the LGPS but before you take your pension, we may pay a death grant lump sum to your dependant, relative, personal representative or someone you have nominated (a 'beneficiary').**

We explain how much the death grant lump sum will be in the frequently asked questions section above (see 'What happens to my deferred benefits if I die?').

You can make an expression of wish to tell us who you would like to receive any death grant that might become due. However, this is not legally binding, and we will decide

who to pay any death grant to. If you are nominating a child under the age of 18, you should consider getting legal advice about setting up a trust fund.

To make or update your expression of wish, log on to our online portal or fill in an expression of wish form, which you can download from our website.



## THE NORMAL MINIMUM PENSION AGE (NMPA) IS CHANGING

**The normal minimum pension age (NMPA) is the earliest age that you can take your pension. The NMPA is currently 55, but it will rise to 57 from 6 April 2028. This change does not apply if you have to take your pension early due to ill health.**

**What does this mean for me?**

### **If you were born after 5 April 1973**

The earliest age you can take your pension will be increased by two years, to age 57.

### **If you were born after 6 April 1971 but before 6 April 1973**

You can take your pension between your 55th birthday and 5 April 2028 (the day before the NMPA increases to 57). If you choose not to take your pension during this period, you'll need to wait until your 57th birthday at the earliest.

### **If you were born on or before 6 April 1971**

You will already have reached age 57 by 6 April 2028 so the change won't affect you.

### **Will there be any protection from the change in the NMPA?**

You could be protected from the increase in the NMPA if you joined the LGPS in England and Wales before 4 November 2021. You could also be protected if you transferred a previous pension into the LGPS, as long as you meet certain conditions. We are waiting for a decision from the Government as to whether any protection will be introduced into LGPS rules to allow members who qualify for protection to continue with their right to take their LGPS pension from age 55. We will tell you when the Government makes a decision on this, and you can keep up to date with developments at [www.gov.uk](http://www.gov.uk)



## LGPS RULE CHANGE – THE MCCLOUD REMEDY

### What is the McCloud remedy?

When public service pensions changed from final-salary to career-average schemes, members who were within 10 years of their normal pension age were protected. In 2018, the Court of Appeal ruled this was unfair to younger members. The McCloud remedy, which was introduced from 1 October 2023, gives similar protection to eligible younger members.

### Who is protected by the McCloud remedy?

Not all LGPS members are protected. Whether you are depends on your membership history in the LGPS and other public service pension schemes.

### What should I do?

#### **If you've been a member of another public service pension scheme or LGPS fund**

Before we pay your benefits, we will ask you to confirm whether you have any public sector membership held with another scheme. Your information helps us work out whether you're protected by the McCloud remedy. We may need to ask for more information from your previous pension provider to help us make sure your pension calculations are accurate.

#### **If you haven't been a member of another public service pension scheme**

You don't need to do anything. We'll work out whether you're protected by the McCloud remedy. Your pension statement will show how the changes affect you. If you qualify for protection, we'll work out any 'final guarantee amount' when you take your pension. However, this increase applies to very few members.

### How do I get more information?

For more information on the McCloud remedy, please visit

[lgpsmember.org/mccloud-remedy](https://lgpsmember.org/mccloud-remedy)

## UPDATE ON PENSIONS DASHBOARDS

**Last year we gave you an update about LGPS funds taking part in a new initiative called pensions dashboards.**

Pensions dashboards let you safely view all your unpaid pension benefits, including your State Pension, in one place. This should help you find any pension accounts you may have lost and help you plan for your retirement.

All pension providers must connect to the dashboards by 31 October 2026. LGPS funds are prioritising working with specialist companies to connect to the dashboards by 31 October 2025.

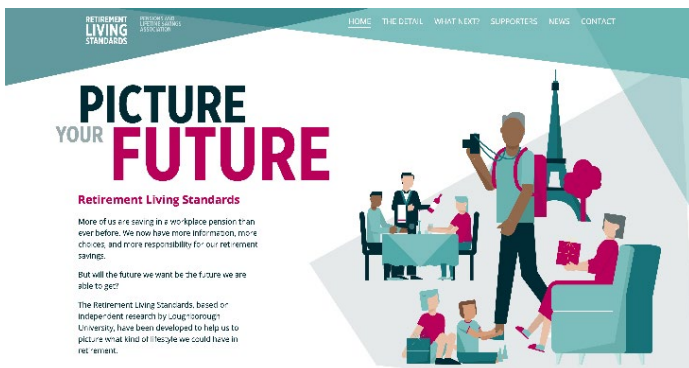
The dashboards will become available to the public when the Secretary of State for Work and Pensions is satisfied that they are ready to support widespread use by the public.

When the dashboards become available to the public, you will need to use the Government's GOV.UK One Login to securely prove your identity as part of the registration process. Make sure your personal information is up to date by logging in to your online pension account.

For more information on pensions dashboards, please visit [pensionsdashboardsprogramme.org.uk](https://pensionsdashboardsprogramme.org.uk)



# RETIREMENT LIVING STANDARDS



## First published in 2019, the Pensions and Lifetime Savings Association's (PLSA's) Retirement Living Standards help us to picture what kind of lifestyle we could have in retirement.

Based on Loughborough University's research, the standards define three living standards and provide estimated costs for essential things such as bills, food, transport, leisure and clothing.

These standards are regularly updated to take account of changes in the cost of goods and services and in people's expectations for their retirement. The most recent study suggests that a single person will need £13,400 each year as a minimum income, £31,700 for a moderate standard of living and £43,900 to be comfortable. For couples, the equivalent numbers are £21,600, £43,900 and £60,600 each year.

You can find more information on the Retirement Living Standards on the PLSA website at [www.retirementlivingstandards.org.uk](http://www.retirementlivingstandards.org.uk)

The figures stated above are the general levels of spending needed to achieve a certain standard of living. The standards provide a general guide based on common costs for many people in retirement. However, it is important to remember that everyone's financial circumstances are different. You may need to allow for other costs depending on your circumstances, for example, mortgage, rent and social care costs, and any tax you may have to pay on your pension income. For more accurate planning, we would encourage you to think about the costs you may have in your retirement.

Once you have considered what you'll need or want to spend your money on and have developed your own personal target, the next step is to work out how much your retirement income is likely to be and understand how much you already have (for example, in savings).

The full State Pension for 2025 to 2026 is £12,014.12 a year. This will go a long way towards reaching the minimum Retirement Living Standard for single pensioners. And couples, where both pensioners are on the full State Pension, would achieve the minimum Retirement Living Standard. You can check your pension forecast at [www.gov.uk/check-state-pension](http://www.gov.uk/check-state-pension)

Other retirement income will include your LGPS benefits plus any other workplace pensions, personal pensions and any savings and investments you may have. If you've lost track of your pension pots, you can use the Pension Tracing Service to start tracking them down.

To find out how much you might get from your LGPS pension on a specific date, you can log in to the online portal for an estimate of your benefits if you were to take early retirement. The estimate will take into account any reductions that may apply.



# SCAMS

The number of pension scams continues to rise. It's more important than ever to understand how to protect your money and the signs to look out for if you think you might be dealing with a scam.

Scammers often claim to be from genuine pension providers. They may contact you unexpectedly, through methods such as email, text message, social media or illegal cold-calling. They may offer you a free review of your finances or the opportunity to free up your pension before you are 55.

Their aim is to persuade you to transfer your pension savings to them, by promising access to high-earning, low-risk benefits.

To reduce the likelihood of being scammed:

- reject unexpected offers or cold calls;
- check who you're dealing with by looking at the Financial Services Register at [register.fca.org.uk](https://register.fca.org.uk)
- read The Pension Regulator's leaflet on scams at [www.fca.org.uk/publication/documents/pension-scams-leaflet.pdf](https://www.fca.org.uk/publication/documents/pension-scams-leaflet.pdf)
- don't be rushed or pressured into making decisions; and
- get impartial information and advice from [www.moneyhelper.org.uk/en](https://www.moneyhelper.org.uk/en)

**If you receive a phone call or email which you think may be from us but you're not sure, don't give your details. Contact us to find out if the call or email is genuine.**



# PENSION AWARENESS



## GET READY FOR PENSION AWARENESS WEEK!

**Pension Awareness Week is back from 15 September 2025. This is the perfect time to get clued up about your retirement plans. The week is packed with free webinars and pension clinics, all designed to help you understand your pension and how to make the most of it.**

The goal is simple – to get everyone more interested in their pensions. Whether you're just starting out or planning to retire soon, there's something for everyone. You can find a range of support on the official website at [www.pensionawarenessday.com](https://www.pensionawarenessday.com).

Why not spread the word? Encourage your colleagues, family and friends to check in with their pension providers. They can find help at [www.gov.uk/find-pension-contact-details](https://www.gov.uk/find-pension-contact-details).

And don't forget to check your own State Pension at [www.gov.uk/check-state-pension](https://www.gov.uk/check-state-pension) and regularly log in to your LGPS pension online.

So, make a note on your calendar and take advantage of Pension Awareness Week to make sure you can have the retirement you deserve!

## REJOINING THE LGPS

**You might have to decide what to do with your LGPS pension (or pensions) if you have just started contributing to the LGPS and have made contributions to the scheme during a previous employment. Your personal circumstances and the length of time you were contributing to the LGPS will affect what happens to your previous LGPS pension. You should ask your pension fund for help if you are not sure if you have made contributions to the scheme in the past.**

### Paying in for less than two years

If you were paying into the LGPS for less than two years (or three months if you were in the scheme before 2014), and you do not have a continuous break in active LGPS membership of more than five years, your previous LGPS pension will be joined with your new pension record.

### Paying in for more than two years

If you were paying into your previous LGPS pension for more than two years (or three months if you were in the scheme before 2014), what happens to your pension will depend on when you were last enrolled in the scheme.

### If all of your previous LGPS pension membership was built up before 31 March 2014

If all of your previous membership in the LGPS was built up before 31 March 2014, you will have a choice about what to do with your previous LGPS pension. If you don't do anything, your pension records will stay separate. If you would like your LGPS pension records to be linked together, you must tell us within 12 months of starting your new role. We will then get in touch with your former employer to set this up.

### If all of your previous LGPS pension membership was built up after 31 March 2014

If all of your previous membership in the LGPS was built up after 31 March 2014, your pension records will usually be joined together automatically. If you would like to keep them separate, you will need to tell us this within 12 months of starting your new role.

### Things to think about

#### • Redundancy or ill health

If you leave your role

because of ill health or redundancy, your previous LGPS pension will not be paid early with your current pension if you keep your pension records separate.

#### • Retiring early

If you retire before your NPA, your pension would normally be paid at a reduced rate to take account of the early payment. If you choose to join your pension records together, you will not be able to take one pension early and leave the other until your NPA, as both pensions will be reduced for early payment.

#### • Final salary link

If you were in the LGPS before 31 March 2014, left after 1 April 2014, and rejoin within five years, your previous pension will keep its final salary link. Your pension records will be joined together (unless you contact us within 12 months of rejoining the scheme to ask us to keep them separate), so your LGPS membership from before 2014 will be linked to your new salary.



# ENGAGE - YOUR NEW ONLINE MEMBER PORTAL

**Your online member portal has changed. Engage is the upgraded member self service portal offering an improved user experience and online tools to help you plan and manage your pension.**

Features include the following:

- Online annual benefit statements, broken down into simple chunks to help you understand your pension benefits.
- A retirement income planner which allows you to set a retirement goal to match the lifestyle you are hoping to have in retirement and allocate spending to different lifestyle categories. The planner will present you with information about the retirement income you will need to achieve the lifestyle you want in retirement compared with how much you are on track to receive.
- An improved registration and log-in process and added security, which includes sending you a text message with a code you will need to enter in order to log in to your account.

You can still update your contact details, nominate beneficiaries for any death grant that may become due and calculate pension benefits for your chosen retirement date.

If you haven't already signed up for Engage, go to our website to find out what you need to do.

[warwickshirepensionfund.org.uk/scheme/members-self-service-portal](https://warwickshirepensionfund.org.uk/scheme/members-self-service-portal)



## CONTACTING US

**There are various ways you can contact our office.**

**Write to us at:** Warwickshire Pension Fund, Warwickshire County Council, Shire Hall, Warwick, CV34 4RL

**Call us on:** 01926 412005

**Articles or feedback about communications:**

Email: [pensions@warwickshire.gov.uk](mailto:pensions@warwickshire.gov.uk)

**Our office opening hours are 9am - 5pm Monday to Thursday and 9am - 4pm on a Friday\***

*\*Staff are available Monday to Thursday for face to face meetings but please contact us in advance to arrange a time.*



**WARWICKSHIRE  
PENSION FUND**