

## Rights of Way News Roundup for 2020 – 2021

In common with the rest of the population, who were able to work from home, the Rights of Way Team left the office behind in March 2020. During this period, we have successfully moved our materials and equipment from Montague Road to our new base at Budbrooke. Looking to the future the rest of the Team will join the Rangers and be based at Budbrooke in late summer. In order to fit in the space available and in line with Corporate requirements our files are currently being catalogued and will be moved to storage facilities.

Our Volunteers, who are a stalwart bunch, have also continued to operate as and when they were able in accordance with Government guidelines. We are grateful for this as we received an extra 20% increase in contacts from the general public who discovered the value of the rights of way network on their doorstep.

As a consequence of the Covid pandemic we had to stop all the work carried out by the volunteers, but we had some of this work identified as being safety critical and were successful in bidding for a small amount of resources to ensure these works were completed.

### Volunteer Workers Form ROW

Volunteer Hours recorded April 2020 to 2021 = 1556 hours

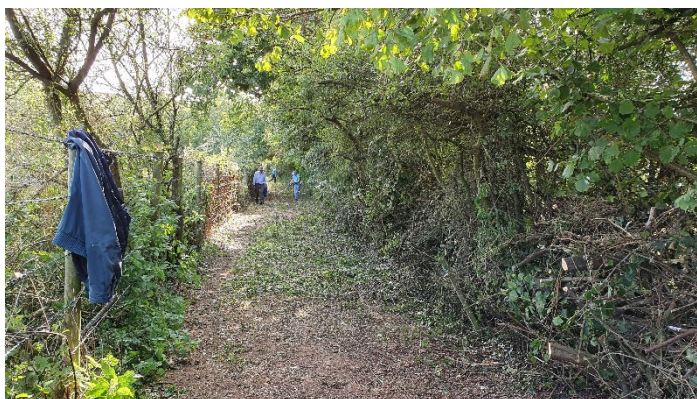
Vegetation was the main theme:

### Coventry Ramblers at Tanworth in Arden



SD246c

SD247a



### Corley





## Southam Volunteer Group SM30

Before



After

Continued



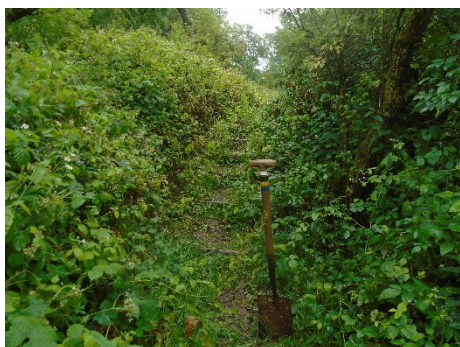
## Stratford Ramblers tools at the ready



SD125b



Can you spot the steps?



Billesley SD3



SB32 being enjoyed by visitors from Hampshire

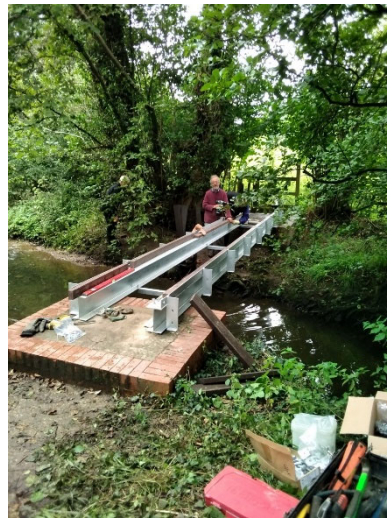


Solihull Ramblers cleared a fallen tree on W29





The Solihull Ramblers were the first to try their hand at installing a new style of kit bridge at Tapster Lane Lapworth W18



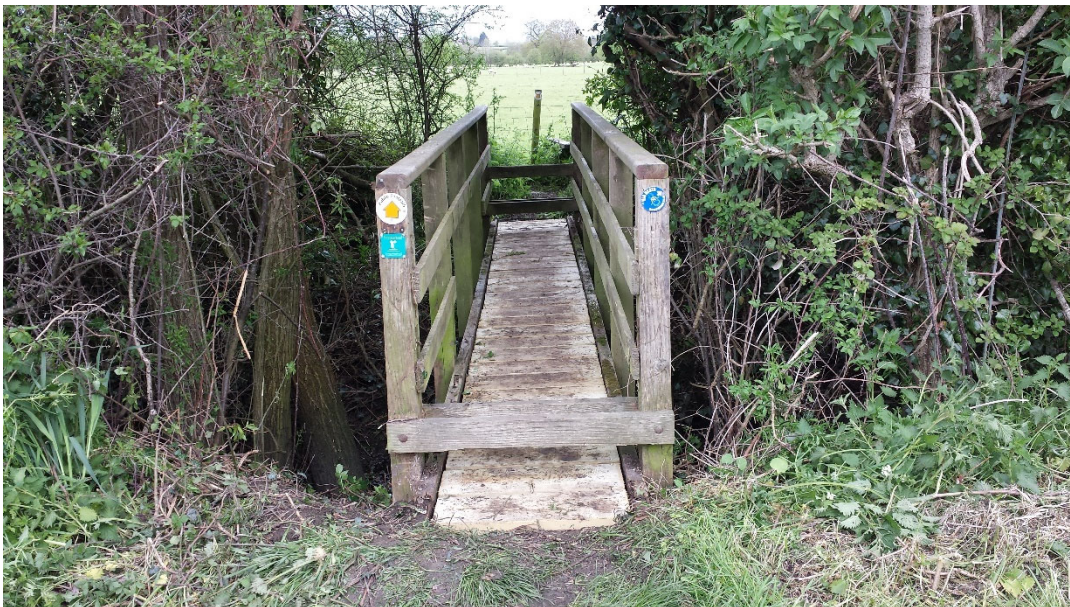
Cotswold Wardens

Installed a gate on SD48 at  
Admington





And a ditch crossing at Ilmington on SS141



Rugby Ramblers put a new deck on the R235a bridge at Grandborough in May this year



Warwickshire Conservation Volunteers





The Shipston Dog Walkers Group have been working on improving the surface of bridleway SS124 known as the Hanson Track. 34 tons of type 1 roadstone was delivered to site. The Group secured help from a hire company who provided them with a digger, dumper and driver and also a new groundworks company who did spreading etc.



Three hours later job done



The Team were successful in securing funds to mitigate the downside of Covid and have therefore been able to use Contractors to install some bridges .....

Snitterfield SD146 on a popular Heart of England route



R302 at Kings Newnham





Kites Hardwick R225

In Bedworth we were able to pay for a bridge with vandal resistant handrails to be installed on B22



And a bridge with plastic decking and metal beams in a damp location on B14





The plastic decking was also utilised at Milcote close to the River Avon where it is liable to flood.





An all plastic bridge on metal beams was used at Gog Brook on Warwick Racecourse



Thank you to everyone for all you have achieved. Photographs always welcome at [paths@warwickshire.gov.uk](mailto:paths@warwickshire.gov.uk).