

KINGSBURY, COLESHILL AND ARLEY JSNA

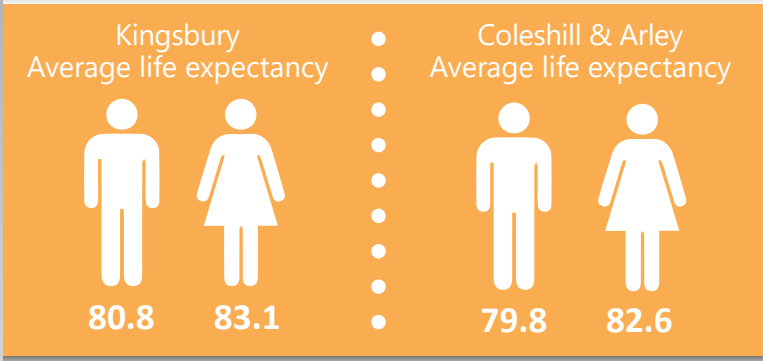
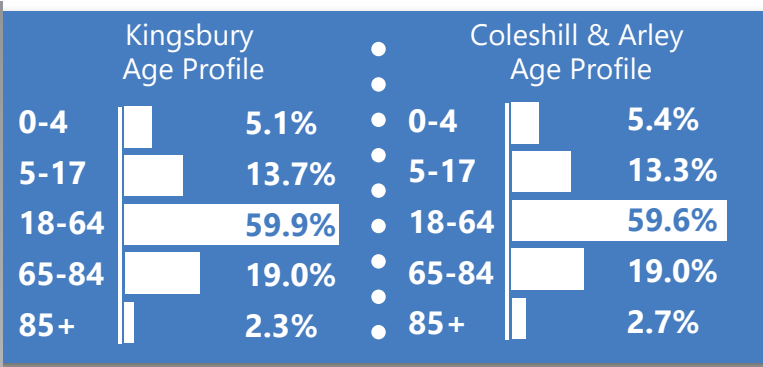
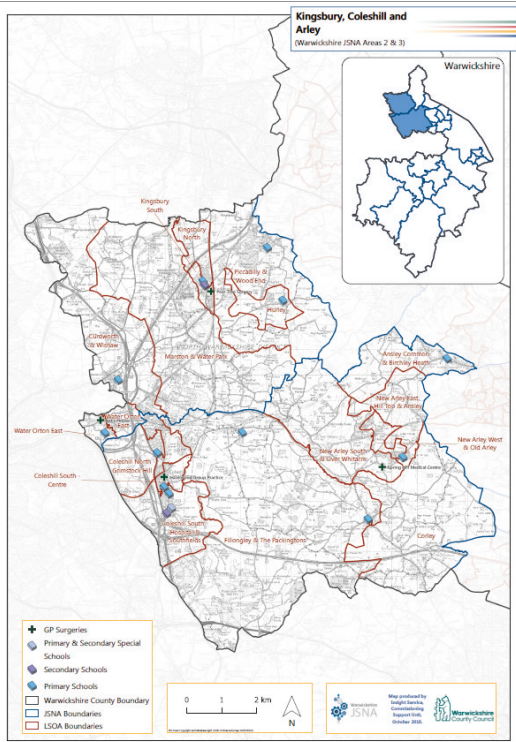


14,382
population in
Kingsbury

15,721
population in
Coleshill & Arley

Kingsbury:
96% White British

Coleshill & Arley:
95% White British



The prevalence of hypertension has been increasing and is significantly higher than the England rate at two GP practices in 2016/17



More than **25%** of patients at two GP practices have caring responsibilities



Emergency admissions for Coronary Heart Disease in Coleshill & Arley are significantly higher than the Warwickshire rate for 2014/15 to 2016/17



Cancer admissions in Coleshill & Arley significantly higher than the Warwickshire average for 2014/15 to 2016/17



Diagnosed mental health issues significantly lower than England at all four GP practices



A&E attendances in under 5s significantly higher than England across Kingsbury, Coleshill & Arley



The 3-year average rate of **23.7** emergency admissions for injuries due to falls in people aged over 55 in Coleshill & Arley is higher than the county average of 20.9 per 1,000 population



Children in Reception and Year 6 are more likely to be obese in Kingsbury, Coleshill & Arley compared to children in Warwickshire



In 2016, there were

16

teenage conceptions in North Warwickshire, down from 48 in 1998 (benchmark year)



74.1%

of Reception children in Coleshill & Arley achieved a good level of development, higher than the county average (72.3%)



33.0%

of Kingsbury students achieved the new Key Stage 4 measures of 9 to 5 (strong pass) in English and Maths, lower than the county average (48.1%)

24.7%

of Kingsbury residents and 25.2% of Coleshill & Arley residents have no qualifications



22.6%

of Year 6 students in Coleshill & Arley normally consume 5 or more portions of fruit and vegetables per day, lower than the county average (46.5%)

The rate of looked after children in Coleshill & Arley is

51.0

per 10,000 population, above the county average of 55.7



9.0% of

adults social care users in Kingsbury and



30.0% in Coleshill & Arley are receiving a residential package



Manufacturing or transport and storage account for

44.9%

of employment in Kingsbury



14.5%

of children under 16 in Coleshill & Arley live in low income families (county average 14.0%)

New Arley West and Old Arley (in Coleshill & Arley) is the only LSOA which ranks in the

30%

most deprived LSOAs in England



From 2016 to 2017 crime increased by

21.5%

in Coleshill & Arley and by



19.0%

in Kingsbury

Corley and Curdworth & Wishaw had the highest road traffic accident rates of any LSOAs in Warwickshire, both over



8

times higher than the county rate in 2017

In 2018, there were

22

young carers in Kingsbury and

44

in Coleshill & Arley



Kingsbury has

78.2%

home ownership and

11.0%

are social renters

Coleshill & Arley has

72.1%

home ownership and

11.9%

are social renters



According to Experian's socio-demographic classification tool, Mosaic,

20.0%

of Coleshill & Arley households are classed as "Country Living"