

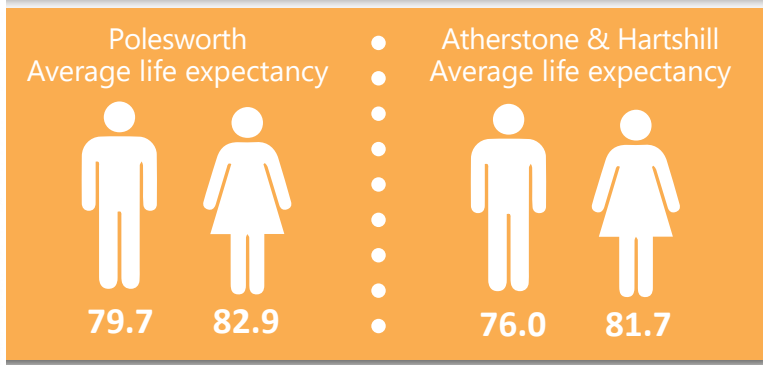
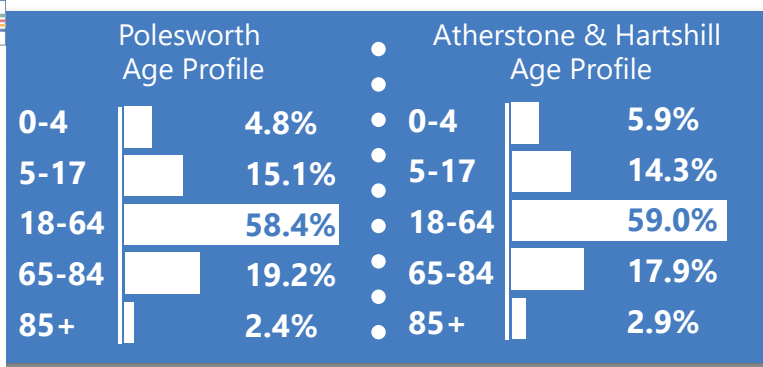
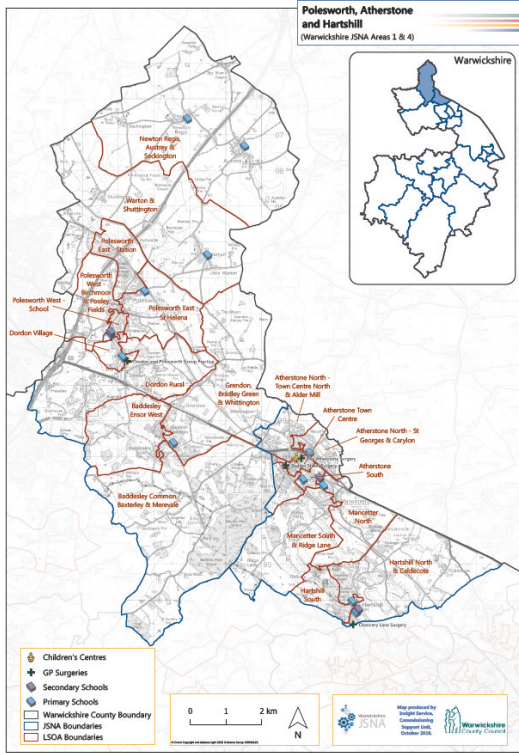


**17,825**  
population in  
Polesworth

**15,301**  
population in  
Atherstone &  
Hartshill

Atherstone &  
Hartshill:  
97% White British

Polesworth:  
96% White British



The prevalence of hypertension at the four GP practices is significantly higher than the England rate in 2016/17



The prevalence of diabetes at the Dordon and Polesworth Group Practice is significantly higher than the England rate for 2016/17



The prevalence of Coronary Heart Disease at the Dordon and Polesworth Group Practice is significantly higher than the England rate for 2016/17



More than **20%** of patients at two of the surgeries in Atherstone and Hartshill are smokers



Polesworth, Atherstone & Hartshill has a directly standardised rate for all age all-cause mortality of

**1,091**

per 100,000 population, significantly worse than Warwickshire



The recorded prevalence of depression at Dordon and Polesworth Group Practice is **12.5%**, significantly higher than the England rate of 9.1%



The 3-year average rate of **118.6** for emergency hospital admissions in 0-4 year olds in Atherstone & Hartshill is higher than the county average of 103.7 per 1,000 population



Children in Reception and Year 6 are more likely to be obese in Polesworth, Atherstone & Hartshill compared to children in Warwickshire



In 2014-16, **8.8%**

of babies born in Atherstone & Hartshill had a low birth weight, higher than the Warwickshire average of 7.0%



66.0%

of Reception children in Atherstone & Hartshill achieved a good level of development, lower than the county average (72.3%)



29.4%

of Polesworth students achieved the new Key Stage 4 measures of 9 to 5 (strong pass) in English and Maths, lower than the county average (48.1%)

12.0%

of children in Atherstone & Hartshill missed more than 10% of school in 2016/17



Atherstone & Hartshill has

132.8

children per 10,000 population on a child protection plan, almost three times the county average (46.5)

The rate of looked after children in Atherstone & Hartshill is

68.0

per 10,000 population, above the county average of 55.7



2.6% of adults in Polesworth and



3.4% in Atherstone & Hartshill are social care users, higher than the county average (2.3%)

29.6%

of Polesworth residents and

31.9%

of Atherstone & Hartshill residents have no qualifications



According to Experian's socio-demographic classification tool, Mosaic,

21.4%

of Polesworth households are classed as "Rural Reality"

9.4%

of Polesworth residents and

46.6%

of Atherstone & Hartshill residents live in LSOAs that are amongst the 20% most deprived LSOAs in England



12.7%

of pupils in Atherstone & Hartshill are eligible for and claiming a Free School Meal, higher than the county average (8.5%)



20.2%

of children under 16 in Atherstone & Hartshill live in low income families (county average 14.0%)

There are

90

young carers in Polesworth and

78

in Atherstone & Hartshill



Polesworth has

74.5%

home ownership and

13.4%

are social renters

Atherstone & Hartshill has

65.0%

home ownership and

21.1%

are social renters



The Ediblelinks project provided food to

1,789

people in Atherstone & Hartshill through 73 groups in 2017/18