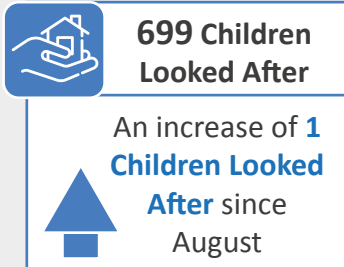
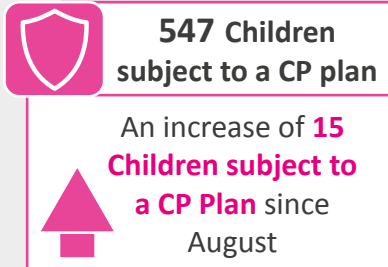
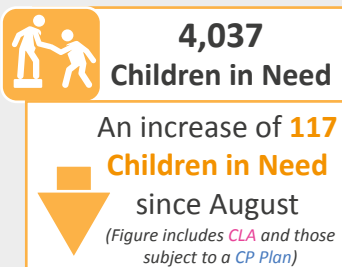


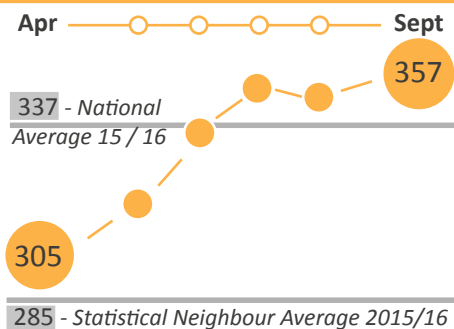
Monthly Children & Families Key Trends Summary (as at September 2017)



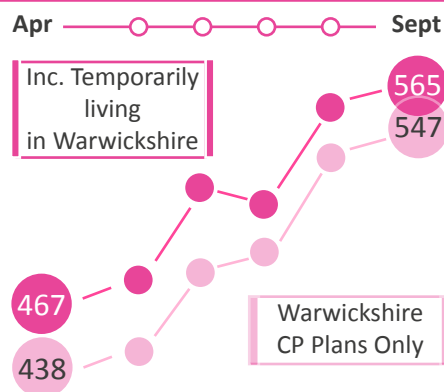
No. of open EH Single Assessments*

	Families	Children
2016/17	1165	1455
Q2 (2017)	1104	1652

Children with an open CIN category (per 10,000) - Monthly trend



No. Children subject to CP Plan Monthly trend

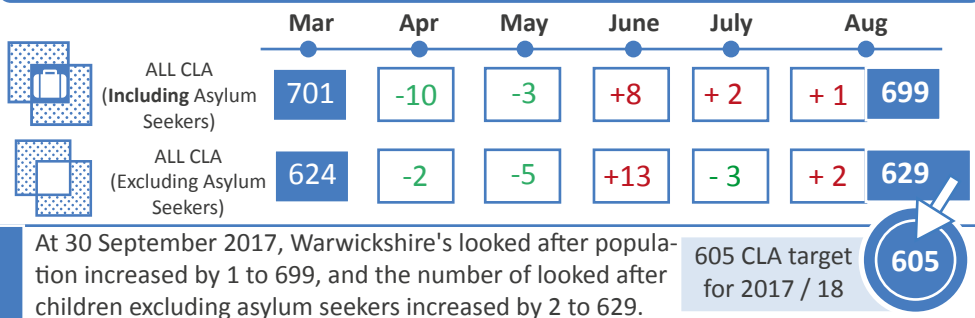


Average Caseload of Workers Monthly trend



Average caseload per FTE based on Social Workers in the seven frontline C&F teams was 19, this is a decrease of 2 since August

No. Children Looked After - Monthly trend



Children Looked After Legal Status

The **largest** number of CLA continue to be those subject to a **full care order**

53% (368) of CLA are on a Full Care Order; This is an increase of **4.5% (16)** since August

9% (64) of CLA are on a Placement Order; This is a decrease of 1 since August

26% (179) of CLA are subject to S20 Accommodation; This has remained the same since August

Children Looked After Placement Type

WCC Foster Carer (inc Family and Friends carers)

356 children; an increase of 5 children (**+ 1.4%**) since August

Agency Foster Carer

153 children; an increase of 1 child (**+ 0.7%**) since August

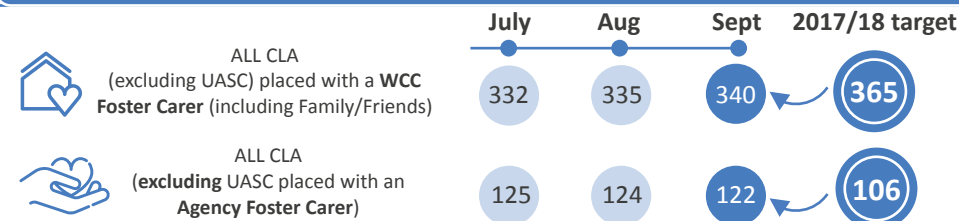
Placed for Adoption

32 children; a decrease of 3 children (**- 8.6%**) since August

Residential Establishment

24 children; a decrease of 1 child (**- 4.0%**) since August

Corporate Board Foster Care Measures



Contacts and Referrals

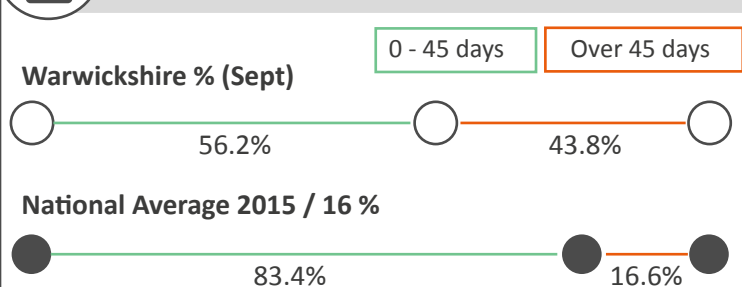
1,318 contacts received; an **increase of 22% (240)** since August, whilst an increase of 38% (361) since Apr 2017

721 referrals received; a **decrease of 1% (8)** since August, and a decrease of 12% (97) since Apr 2017

51% (367 / 721) referrals received led to a Single Assessment being triggered on Mosaic

40% (291 / 721) of referrals received in September were re-referrals, this is higher than the national average of 22.3%

56.2% of the 527 Single Assessments completed in Sept were completed within 45 days, whilst 43.8% over 45 days



*The no. of children will be under represented as historically we have not recorded the no. of siblings in the household where there is an EHSA. Figures are likely to be more robust in 12 months. This reporting brings it more in line with Children's Social Care data.

Source: Data extracted from Mosaic following migration. Icon(s) made by Freepik at www.flaticon.com.