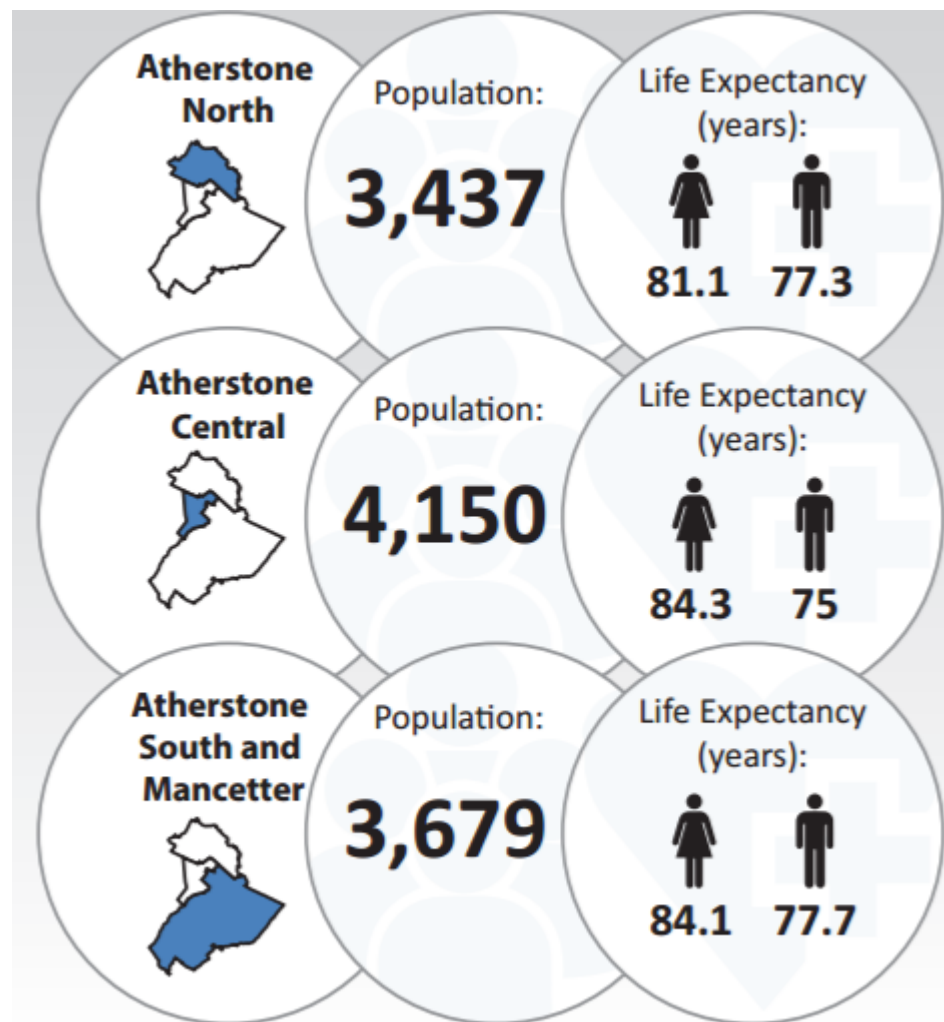
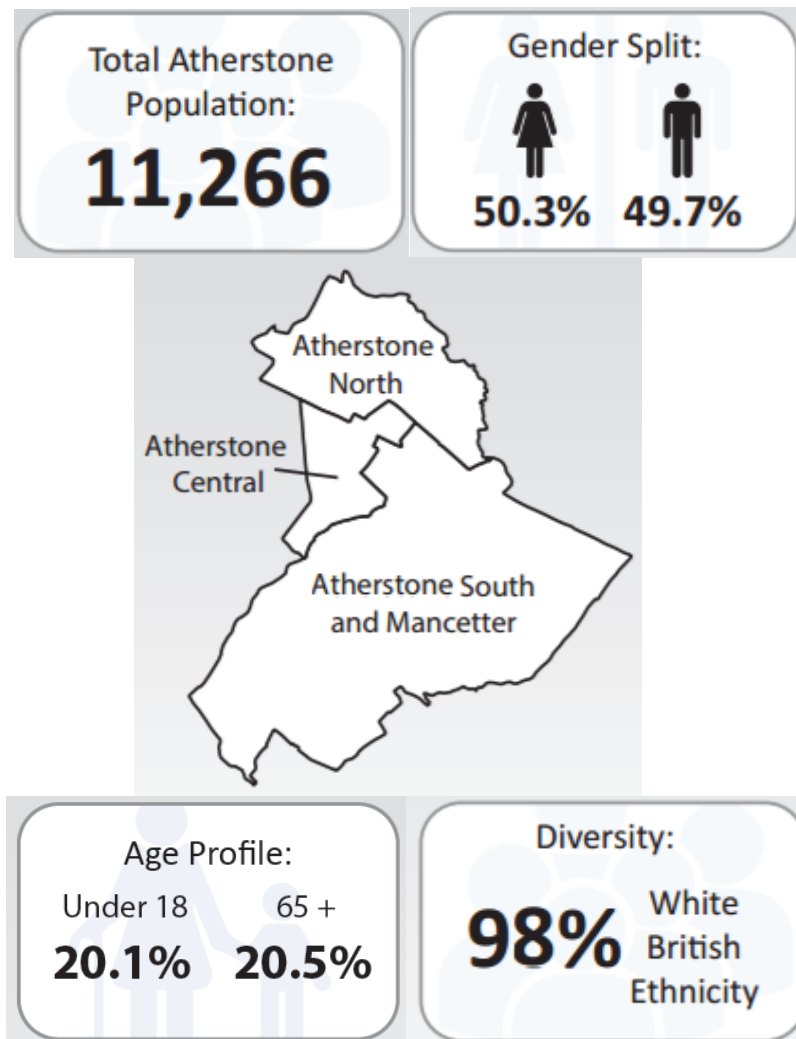


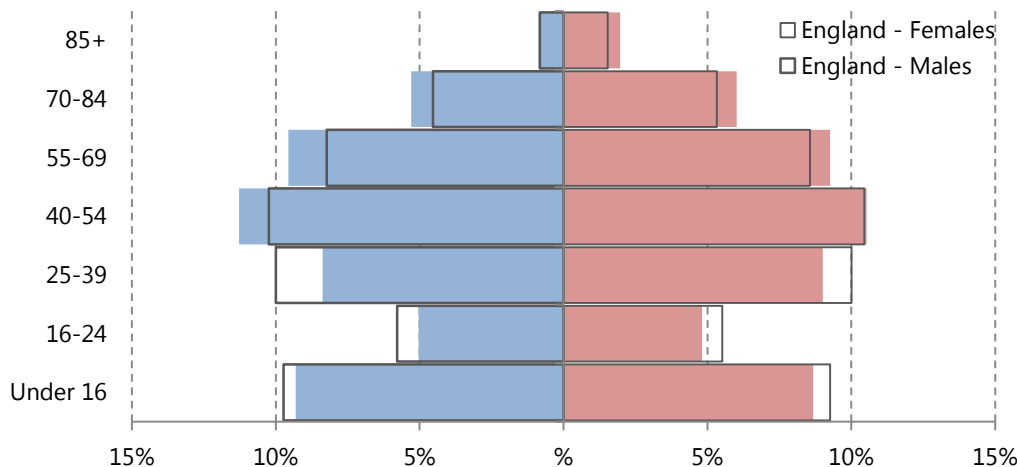
# Sue Robinson



# Population



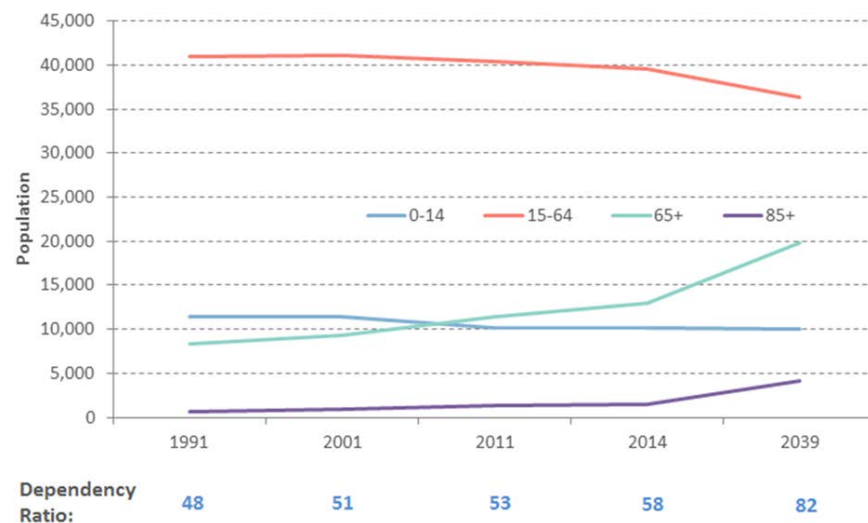
# An ageing population



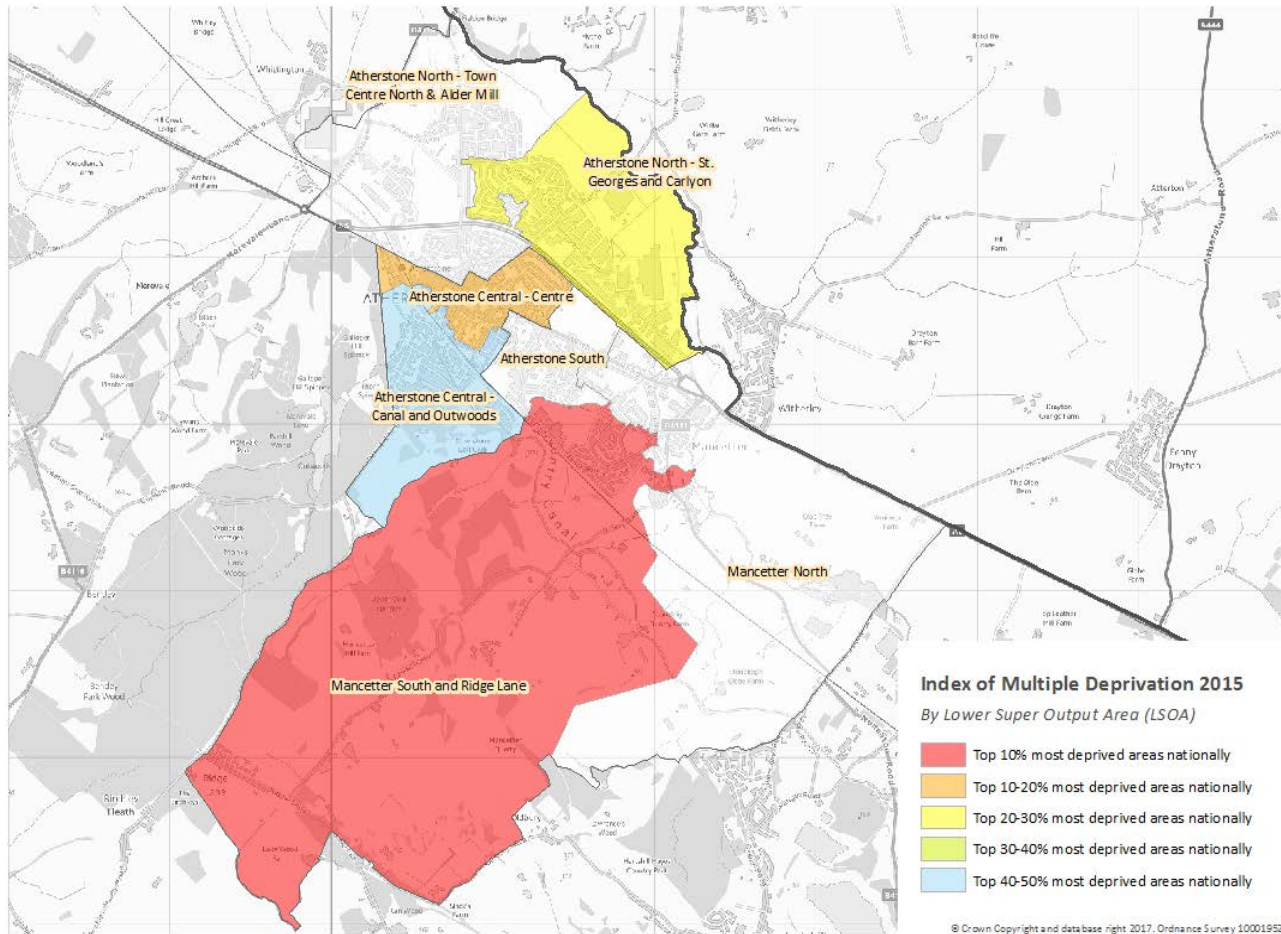
Compared to the national average Atherstone, like North Warwickshire Borough, has a relatively high proportion of its population in the 40-69 and 70+ age groups.

North Warwickshire Borough has low projected growth rates, however, the rate of growth increases with age.

The 85+ group is projected to increase by 180%

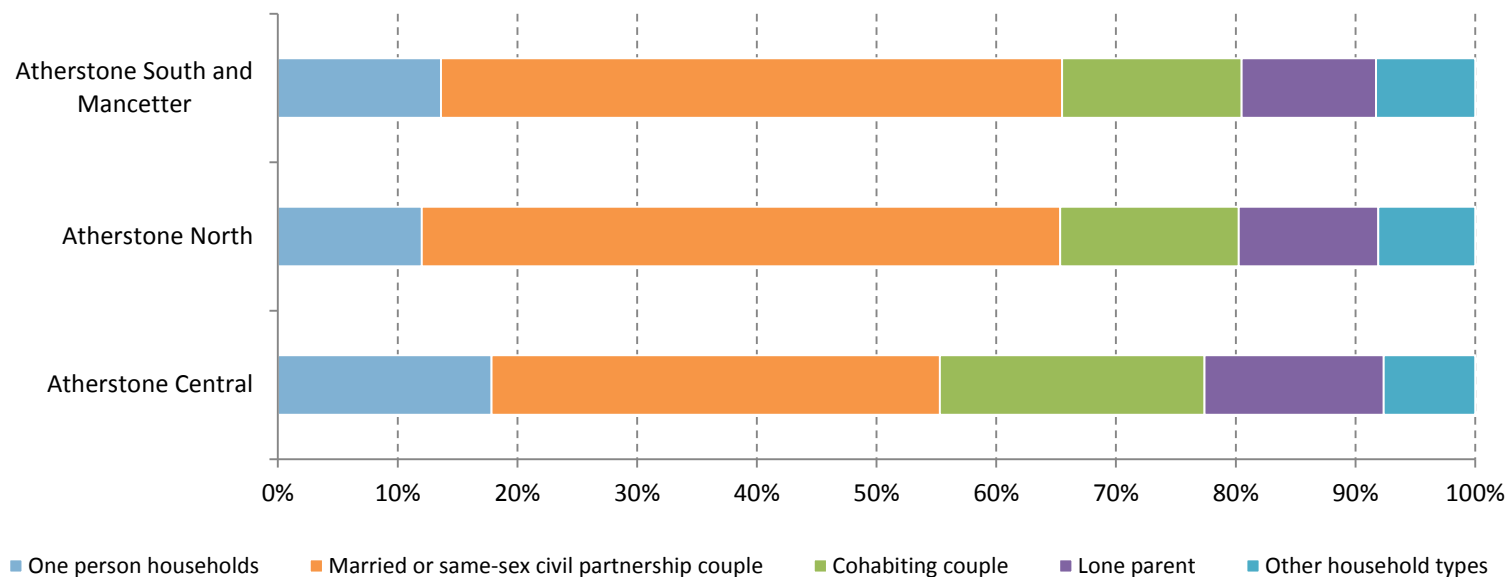
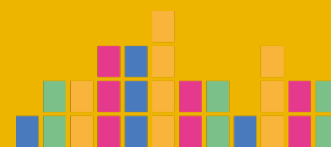


# Deprivation



Source: Department of Communities and Local Government, © Crown Copyright and database right 2017.  
Ordnance Survey 100019520

# Household Composition



Source: 2011 Census

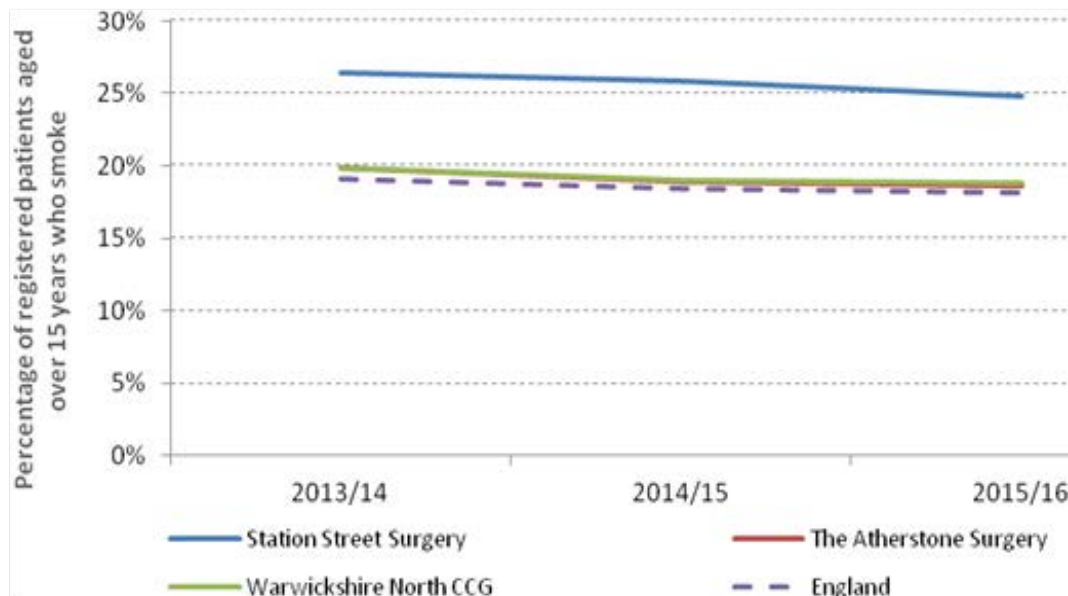


# Key Health Issues

# Smoking



- Estimated cost to society of smoking = £1,852.67 per smoker per year across wards in Atherstone.
- The prevalence of smokers at Station Street Surgery is significantly higher than both the CCG and England rates.



Source: Source: QOF, accessed through fingertips, Public Health England

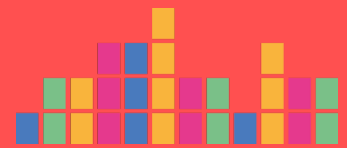
## 1 in 4

patients registered at Station Street Surgery are **smokers** (equivalent to **671** patients).

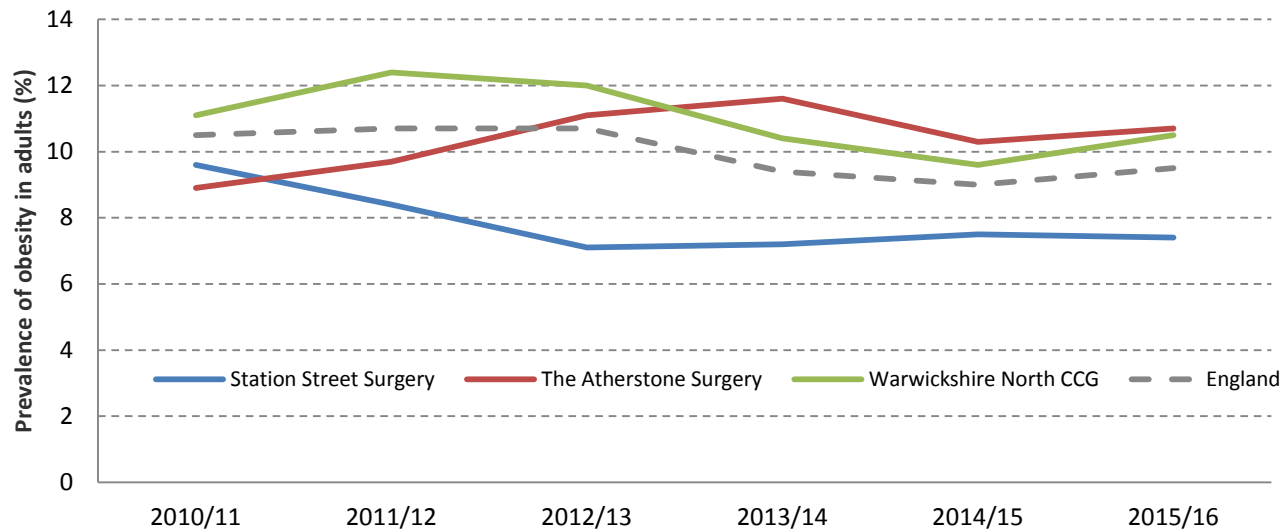




# Obesity



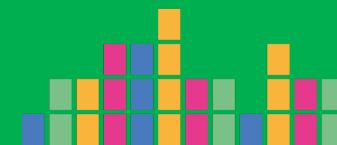
- Defined as body mass index (BMI)  $\geq 30$
- Associated with a range of adverse health outcomes e.g. musculoskeletal disorders, diabetes, hypertension, cancers
- Prevalence of obesity in the patients registered with the Atherstone Surgery has increased over the past five years and is higher than England.



Source: Fingertips, Public Health England



# Childhood obesity



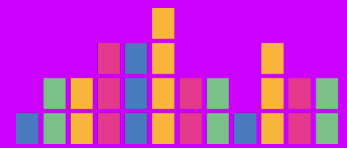
- Those who are obese in childhood are more likely to be obese in adulthood.
- Children in both reception and year 6 are more likely to be obese in Atherstone compared to children in North Warwickshire Borough, county wide and England.
- There is an upward trend in the proportion of both reception and year 6 children in Atherstone who are overweight and obese.

Proportion of reception and year 6 children who have excess weight or are obese, 2015/16

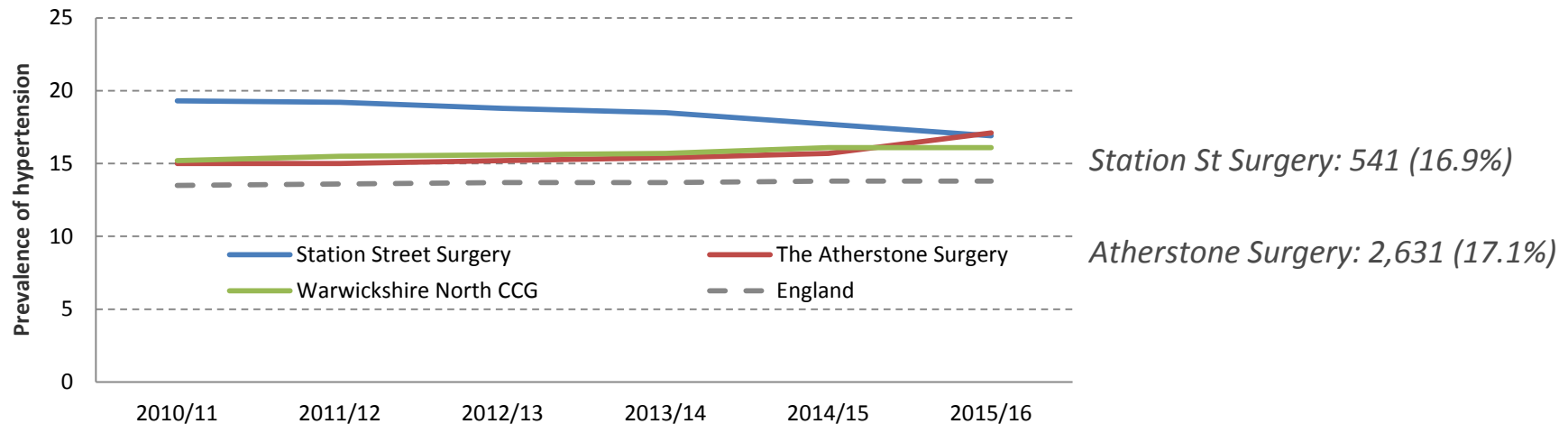
	Atherstone		North Warwickshire	Warwickshire	England
Excess weight (overweight and obese)					
Reception	35	30.5%	23.2%	20.6%	22.2%
Year 6	41	38.3%	34.7%	30.8%	33.4%
Obese					
Reception	18	15.3%	9.9%	8.3%	9.3%
Year 6	23	21.5%	19.3%	16.3%	19.0%

Source: NCMP

# Hypertension



- High blood pressure (hypertension) is an important, modifiable, risk factor for morbidity and mortality.
- Risk factors include increasing age, sedentary lifestyle, a diet high in salt or alcohol and stress.
- The prevalence of hypertension at both surgeries in Atherstone is significantly higher than in England.

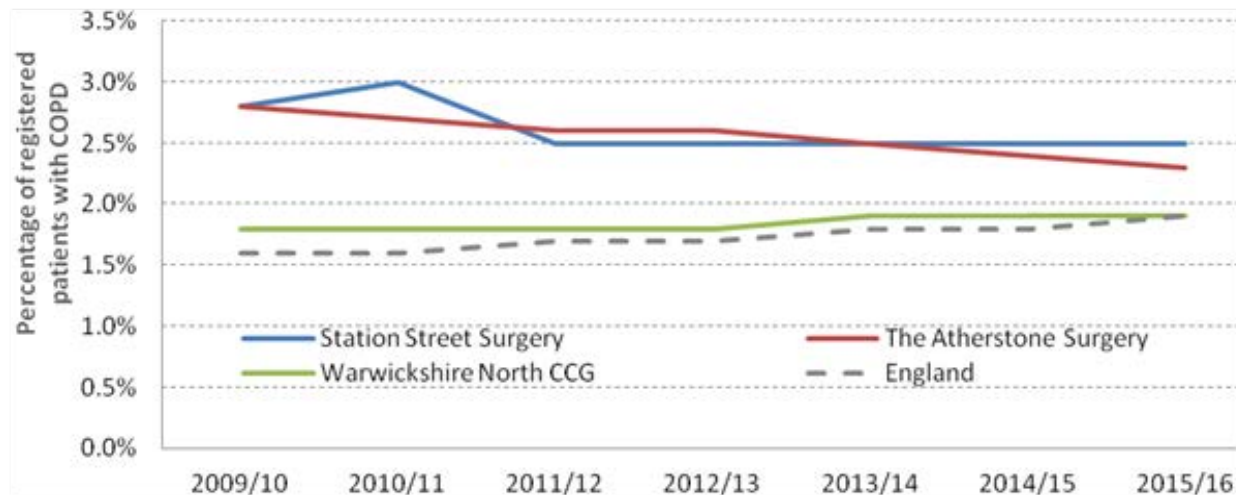


Source: Fingertips, Public Health England

# Chronic Obstructive Pulmonary Disease (COPD)



- COPD is a condition of the lungs which causes difficulty breathing and frequent chest infections. Smoking is a key risk factor.
- The prevalence of COPD in patients in both Atherstone surgeries is higher than in England

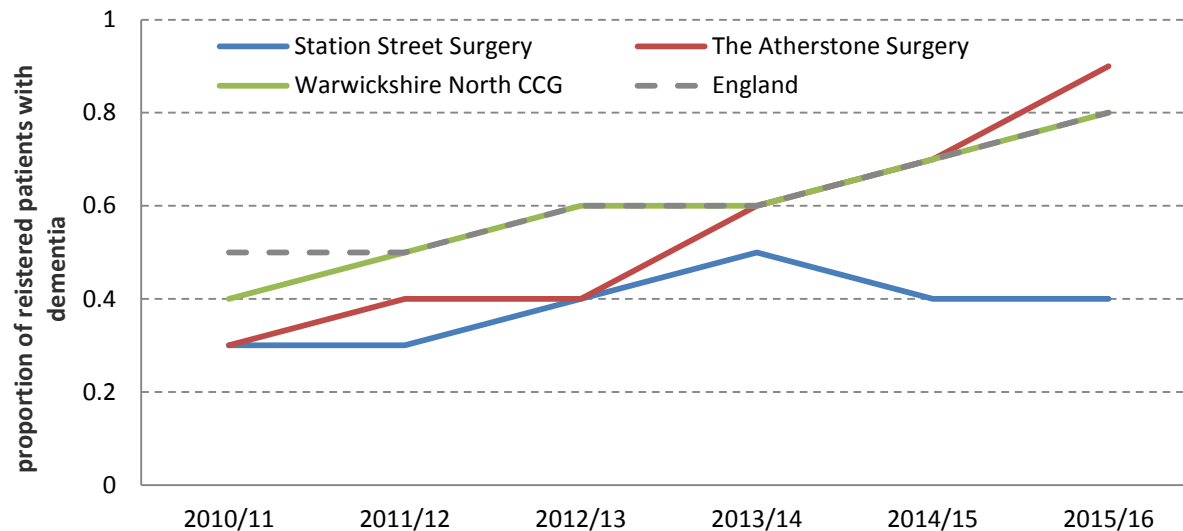


Source: Fingertips, Public Health England

# Dementia

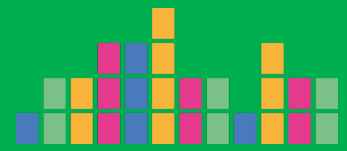


- In 2015, dementia and Alzheimer's Disease became the leading cause of death in England and Wales for the first time.
- The prevalence of diagnosed dementia across Warwickshire North CCG and England has doubled since 2010/11.
- It is likely that there will be acceleration in the increase of dementia as the local population ages.



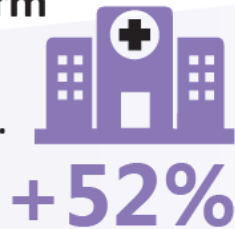
Source: Fingertips, Public Health England

# Mental Health



- Warwickshire North CCG estimates that 11.4% of their population has one of the common mental health problems.
- Estimates suggest that the prevalence of mental health problems in children in North Warwickshire Borough is 9.4%

Hospital stays for **self-harm** are significantly higher in Atherstone than England.



There were **161** Hospital stays in Atherstone MSOA between 2010/11 and 2014/15.

**Depression** prevalence is lower in both Atherstone surgeries when compared to CCG (7.1%) and national average (8.3%).



Station Street Surgery: 155 (6%)  
Atherstone Surgery: 538 (4.3%)



*2015/16 figures*



*‘anyone who cares, unpaid, for a friend or family member who due to illness, disability, a mental health problem or an addiction cannot cope without their support’*

- 2011 census - 12% of population of North Warwickshire provided some form of unpaid care each week - the highest rate of unpaid carers in Warwickshire
- 2014/15 - an estimated 21.4% of patients registered with a GP in Warwickshire North CCG had some form of caring responsibility in

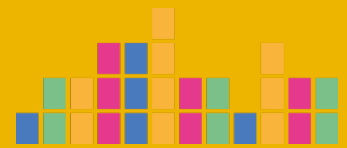
There are over 1,300 **carers** across the three Atherstone wards.



Atherstone Central Ward has seen a 30% rise in the number of unpaid carers between 2001 and 2011.



# The positives



- Screening uptake for bowel, breast and colon cancer in North Warwickshire Borough are significantly better than rates in England.
- Cancer prevalence is lower at both Atherstone surgeries (2.2%) than across Warwickshire North CCG & England (both 2.4%).
- The prevalence and control of diabetes is similar to national figures.
- There are no significant differences in infant mortality or low birth weight babies when compared to national data.



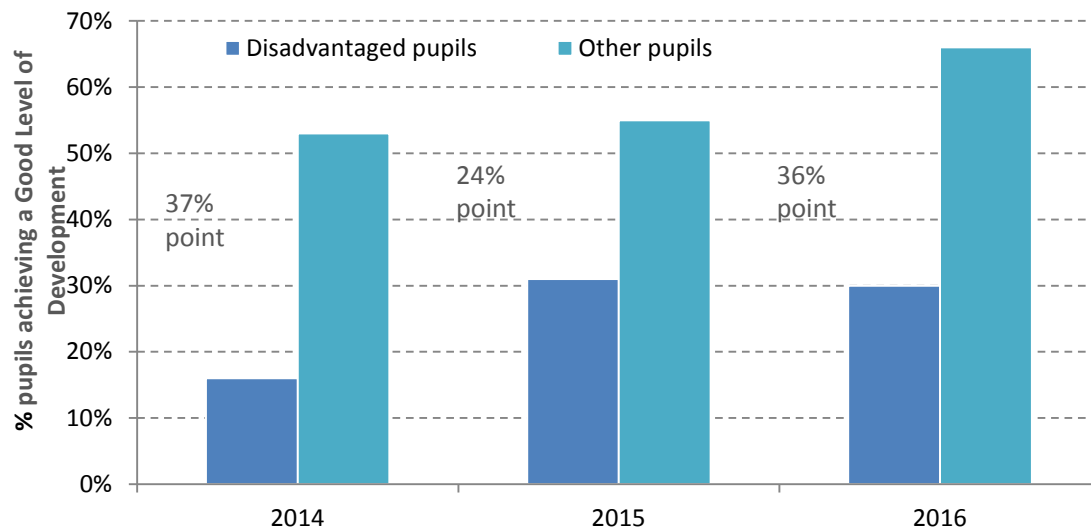
# Determinants of health



# Education (Early years)



- Early Years Foundation Stage Profile:
  - Teacher assessment of children's development at the end of Reception (aged 4 or 5)
  - Main indicator is Good Level of Development (GLD)
  - % achieving a GLD in Atherstone is lower than national (59% vs 69% in 2016)
  - Disadvantaged pupils have worse outcomes



# Education (Key stage 2)



Percentage of children achieving the Expected Level in each subject (2016)

	Reading (R)			Writing (W)			Maths (M)			RWM		
	All	Dis	Other	All	Dis	Other	All	Dis	Other	All	Dis	Other
<b>Atherstone Central</b>	42%	41%	42%	56%	41%	65%	56%	47%	62%	35%	29%	38%
<b>Atherstone North</b>	63%	33%	77%	87%	75%	92%	74%	50%	85%	55%	25%	69%
<b>Atherstone South &amp; Mancetter</b>	59%	22%	74%	59%	33%	70%	47%	22%	57%	44%	22%	52%
<b>Atherstone All</b>	<b>54%</b>	<b>34%</b>	<b>64%</b>	<b>67%</b>	<b>50%</b>	<b>76%</b>	<b>59%</b>	<b>42%</b>	<b>68%</b>	<b>44%</b>	<b>26%</b>	<b>53%</b>
<b>North Warwickshire Borough</b>	64%	49%	69%	77%	64%	81%	64%	47%	69%	50%	34%	55%
<b>Warwickshire</b>	<b>69%</b>	<b>51%</b>	<b>74%</b>	<b>77%</b>	<b>62%</b>	<b>82%</b>	<b>71%</b>	<b>52%</b>	<b>77%</b>	<b>57%</b>	<b>38%</b>	<b>63%</b>
<b>National</b>	66%	53%	73%	74%	64%	79%	70%	58%	76%	53%	39%	61%

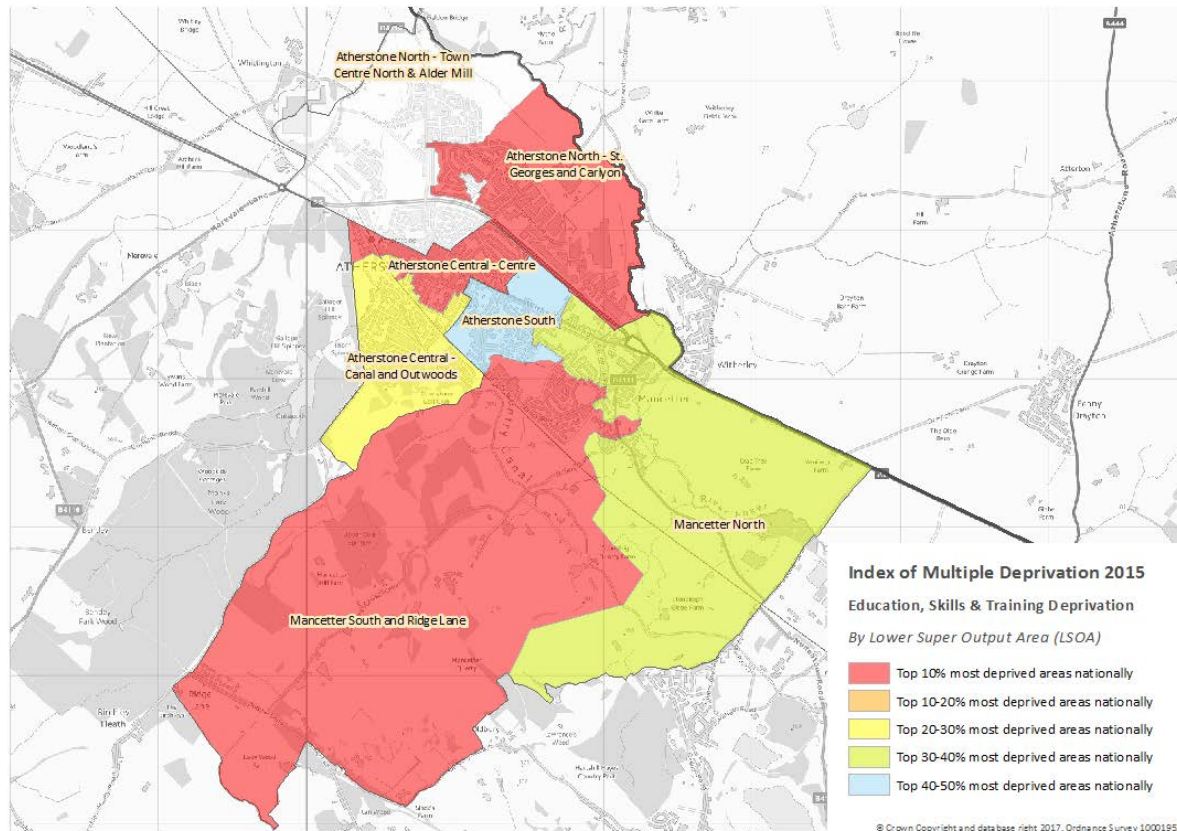
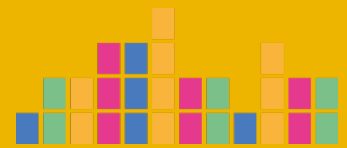
# Education (Key Stage 4)



## Students achieving the new Key Stage 4 measures (2016)

	% A*-C in English & Maths			% achieving the EBACC			Attainment 8 (average score and grade)			Progress 8 <sup>1</sup>		
	All	Dis	Other	All	Dis	Other	All	Dis	Other	All	Dis	Other
<b>Atherstone Central</b>	54%	20%	66%	8%	10%	7%	44.8 D+	35.7 D-	48.0 C-	-0.16	-0.45	-0.06
<b>Atherstone North</b>	76%	25%	83%	24%	0%	28%	54.4 C+	45.3 C-	55.6 B-	0.09	0.16	0.08
<b>Atherstone South and Mancetter</b>	47%	13%	59%	17%	0%	23%	42.3 D+	28.3 E	47.4 C-	-0.13	-0.56	0.03
<b>Atherstone All</b>	59%	18%	70%	16%	5%	19%	47.2 C-	34.8 E+	50.6 C	-0.07	-0.38	0.02
<b>North Warwickshire Borough</b>	55%	32%	62%	21%	6%	25%	48.2 C-	38.6 D	51.0 C	-0.11	-0.47	-0.57
<b>Warwickshire</b>	67%	41%	73%	29%	9%	34%	52.2 C+	40.4 D	55.0 B-	0.02	-0.46	0.13
<b>National</b>	63%	43%	71%	25%	12%	30%	50.1 C	41.2 D	53.5 C+	-0.03	-0.38	0.10

# Education, Skills and Training Deprivation

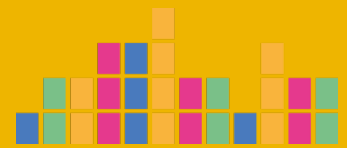


**3** areas in Atherstone rank in the **IMD top 10% most deprived** for the 'education, skills and training' domain.



Source: Department of Communities and Local Government

# Employment & Unemployment



- Top 3 industries employing Atherstone residents

	2012	2015	% Change (2012-2015)
Manufacturing	1,332	1,315	- 1.3%
Transportation & Storage	1,681	2,077	23.6%
Professional, scientific and technical activities	945	1,581	67.3%

*Source: Business Register and Employment Survey for 2015*

- There has been a large increase in the number of apprenticeships that are in operation in Atherstone.
- The number of people claiming Job Seeker's Allowance in the 3 Atherstone wards has been reducing over the past 3 years.
- In December 2016, across the 3 wards there were 65 Job Seeker's Allowance claimants; 36 were in Atherstone Central ward.
- The proportion of resident population aged 16 to 64 years claiming Job Seeker's Allowance was highest in the Atherstone Central ward (1.3%), followed by Atherstone North (0.7%) and Atherstone South & Mancetter (0.7%)

# Crime & Community Safety



## Crime & ASB incidents by ward, January to December 2016

	Population (mid-2015 estimate)	Total criminal offences	Total crime rate per 1,000 population	Total ASB incidents	Total ASB rate per 1,000 population
Atherstone Central	4,150	492	118.55	228	54.94
Atherstone North	3,437	227	66.05	92	26.77
Atherstone South & Mancetter	3,679	249	67.68	171	46.48
North Warwickshire Borough	62,787	4,070	64.82	2,075	33.05
Warwickshire	554,002	35,563	64.19	17,206	31.06

Source: Crime Information System, STORM Incident System, Warwickshire Police. ONS mid-2015 population projections

## ASB incidents by category, January – December 2016

	ASB Category			Total incidents
	Nuisance	Personal	Environmental	
Atherstone Central	168	46	14	228
Atherstone South & Mancetter	98	53	20	171
Atherstone North	64	22	6	92
<b>Total incidents</b>	330 (67%)	121 (25%)	40 (8%)	491

### 20-29

year olds most  
likely to be  
victims of  
violent crime.



### 60+

year olds more  
likely to be  
victims of theft  
or burglary.



Source: STORM Incident System, Warwickshire Police



# Housing

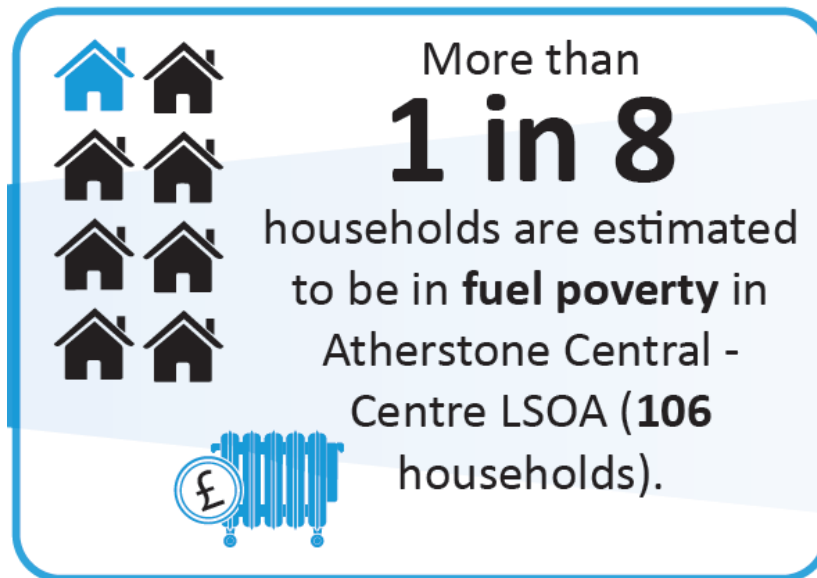


- Home ownership is highest in Atherstone North ward -72% of properties are owned.
- Atherstone Central ward has the most people who are renting properties; 27.8% of households rent through the social sector and 20.5% rent from a private landlord.
- Just over 7% of households in Atherstone Central ward have at least one bedroom less than required.
- In 2011, 2.1% of households in Atherstone Central ward did not have central heating.





- A household is considered to be fuel poor if:
  - they have required fuel costs that are above average (the national median level)
  - were they to spend that amount, they would be left with a residual income below the official poverty line.



# Questions / Comments?



For further information please contact:

- Email: [insight@warwickshire.gov.uk](mailto:insight@warwickshire.gov.uk)

