

SAFEGUARDING

CHILD SOCIAL CARE MONTHLY DATA & TRENDS

Monthly Data for JANUARY 2016

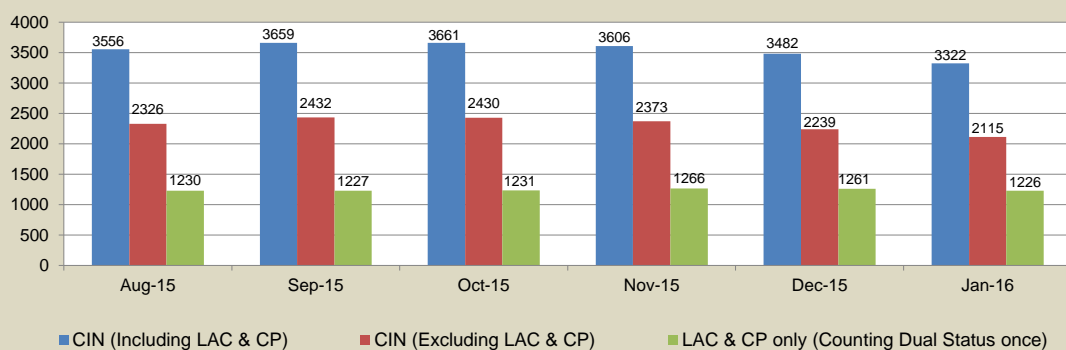
CONTENTS

- SECTION 1 - CURRENT WORKLOAD**
- SECTION 2 - LOOKED AFTER CHILDREN**
- SECTION 3 - CHILD PROTECTION**
- SECTION 4 - FOSTERING**
- SECTION 5 - PRIVATE FOSTERING**
- SECTION 6 - LEAVING CARE**
- SECTION 7 - ADOPTION**

For further information, please contact :
Jamie Wait, Business and Commissioning Intelligence (BCI),
Strategic Commissioning, People Group
Tel: 01926 742361

1. WORKLOAD

1.1 Number of Children with an open Child in Need Category



1.2 Number of Children with an open Child in Need Category (including LAC & CP) by District/Service at 31 January 2016

	CPP	CLA	Dual Status	CIN Other	Total	Number of Workers Holding 21 Cases or Less	Number of Workers Holding 22 - 25 Cases	Number of Workers Holding 26 Cases or more
N WARKS CHILDREN/FAMILIES SERVICES TEAM	47	47	8	288	390	13	5	2
BEDWORTH CHILDREN SERVICES TEAM	84	120	7	92	303	20	3	0
NUNEATON CHILDREN SERVICES TEAM	96	84	17	206	403	18	3	3
RUGBY CHILDRENS SERVICES TEAM	61	80	21	186	348	17	1	4
STRATFORD DISTRICT CHILDRENS TEAM	50	58	5	256	369	15	2	5
WARWICK CHILDREN SERVICES TEAM	112	99	8	101	320	19	2	1
WARWICK DISTRICT CHILD ASSESSMENT TEAM		2		353	355	17	2	6
CHILDRENS ASYLUM TEAM		78		103	181	4	2	1
LEAVING CARE TEAM		91		219	310	20	4	0
NORTH IDS (SOCIAL CARE)	3	10		152	165	15	0	0
SOUTH IDS (SOCIAL CARE)	2	16		129	147	13	0	0
YOUTH JUSTICE & FAMILY INTERV'N SERVICE		1		1	2	N/A	N/A	N/A
No Allocated Team				29	29	N/A	N/A	N/A
Total	455	686	66	2115	3322	171	24	22

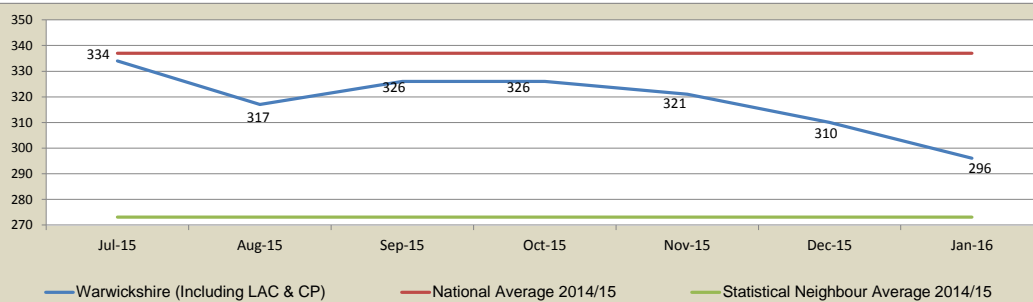
Data Caveat: Please note any cases allocated to teams without an open main category of need will not appear in the above table. This includes some children subject to a CP Plan where there is no open child in need category recorded.

1.3 Number of 'CIN Other' (Excluding CLA, CPP & Dual Status) cases by duration that main

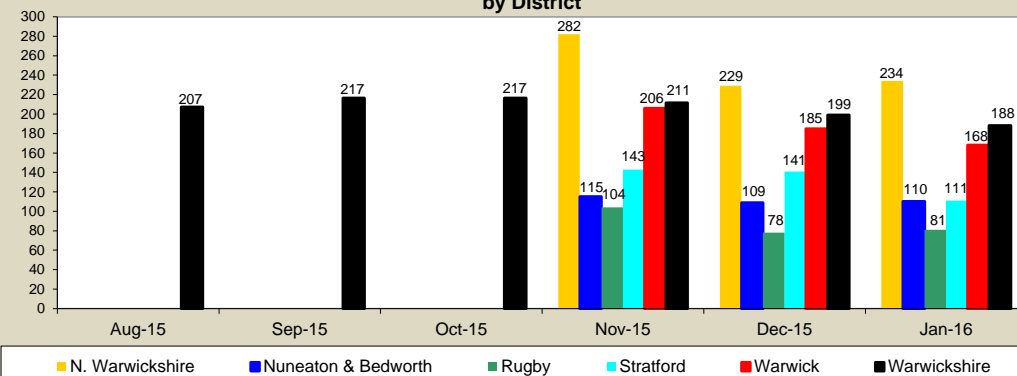
	Under 30 days	1 to 3 Months	3 to 6 Months	6 Months to 1 Year	Over 1 Year
N WARKS CHILDREN/FAMILIES SERVICES TEAM	108	70	36	29	45
BEDWORTH CHILDREN SERVICES TEAM		6	22	30	34
NUNEATON CHILDREN SERVICES TEAM		4	10	36	156
RUGBY CHILDRENS SERVICES TEAM	55	28	16	29	58
STRATFORD DISTRICT CHILDRENS TEAM	42	53	48	51	62
WARWICK CHILDREN SERVICES TEAM	1		6	12	82
WARWICK DISTRICT CHILD ASSESSMENT TEAM	61	34	81	88	89
CHILDRENS ASYLUM TEAM		2	12	12	77
LEAVING CARE TEAM		1	1	3	214
NORTH IDS (SOCIAL CARE)	1	1	23	37	90
SOUTH IDS (SOCIAL CARE)	2	17	6	2	102
YOUTH JUSTICE & FAMILY INTERV'N SERVICE				1	
No Allocated Team	2	2	2	4	19
Total	272	218	263	334	1028
%	12.9%	10.3%	12.4%	15.8%	48.6%

Please note any cases allocated to teams without an open main category of need will not appear in the above table

1.4 Number of Children with an open Child in Need Category per 10,000 compared to National/Statistical Neighbour Averages



1.5 Total No. of 'CIN Other' (excluding CLA/CPP cases) per 10,000 of the Child Population by District

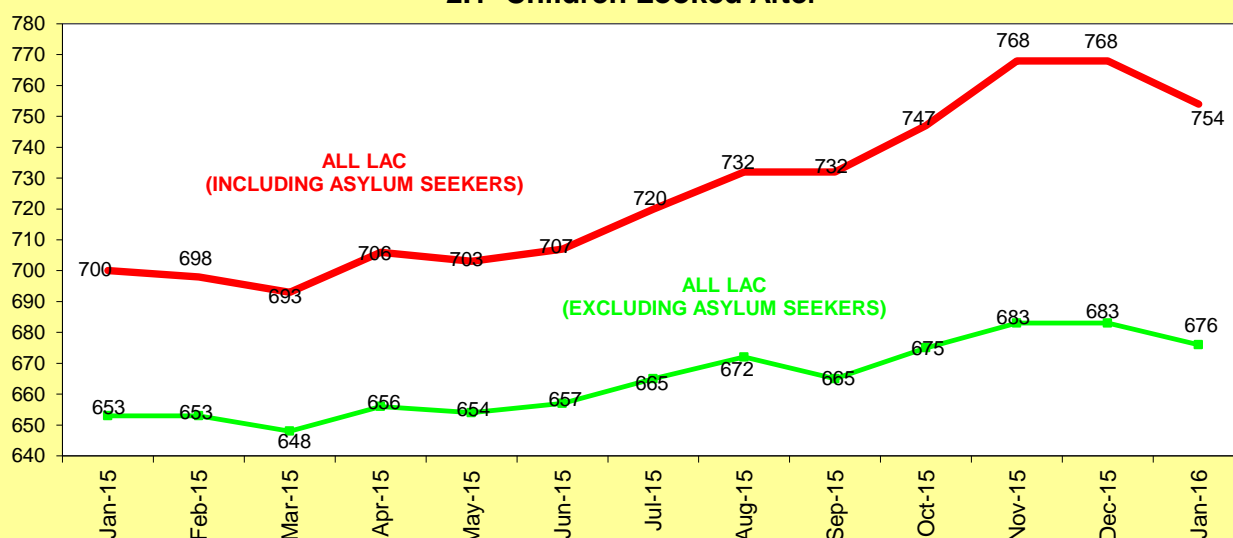


Please note than from June 2015 onwards the rates per 10,000 are based on the 0-17 population mid-year population estimates for 2014 published by the Office for National Statistics in June 2015. Districts are based on allocated team and therefore exclude countywide teams/services such as Leaving Care, Childrens Asylum Team and Integrated Disability.

For rates of CLA per 10,000 (see Section 2.2) and CP per 10,000 (see Section 3.2)

2. CHILDREN LOOKED AFTER

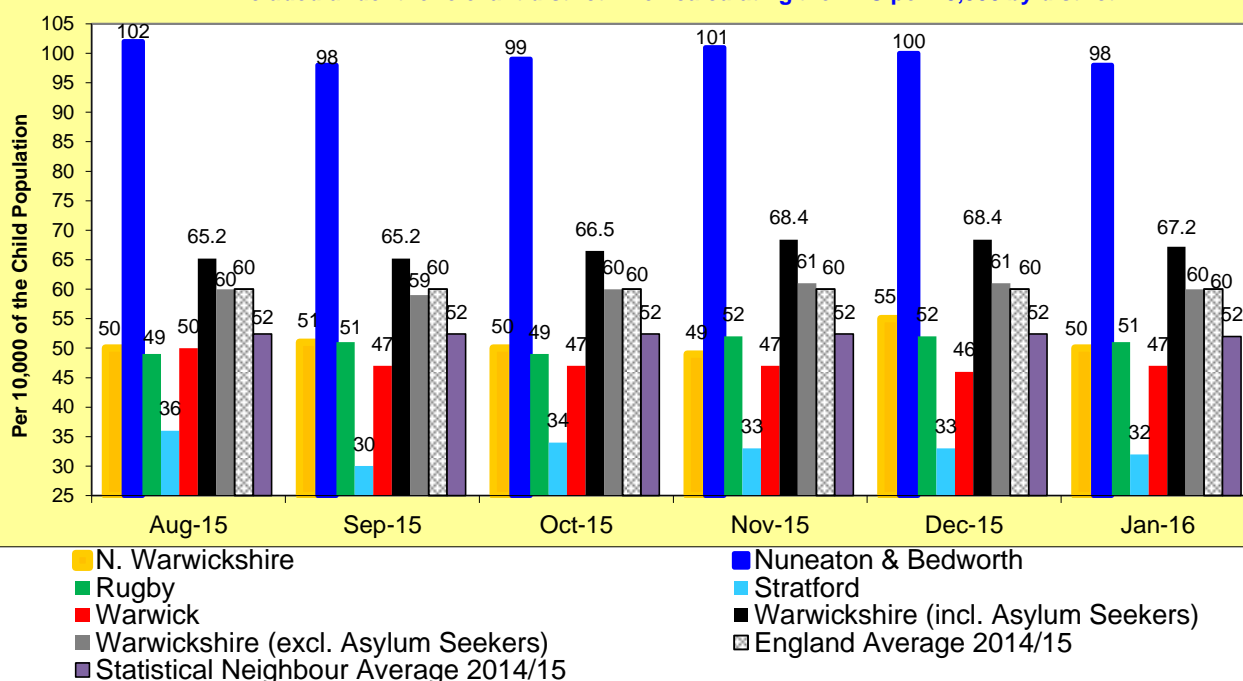
2.1 Children Looked After



At 31 January 2016, Warwickshire's looked after population decreased by 14 to 754, whilst the number of looked after children excluding asylum seekers decreased by 7 to 676.

2.2 LAC per 10,000 of the Child Population by District

Looked After Children allocated to the district teams that form the Leaving Care Service will be included under the relevant district when calculating the LAC per 10,000 by district



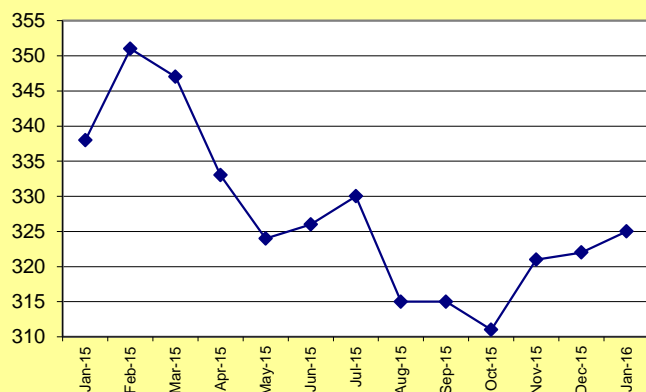
Please note than from June 2015 onwards the rates per 10,000 are based on the 0-17 population mid-year population estimates for 2014 published by the Office for National Statistics in June 2015.

2.3 Looked After Children by Placement Type by Team at 31 January 2016

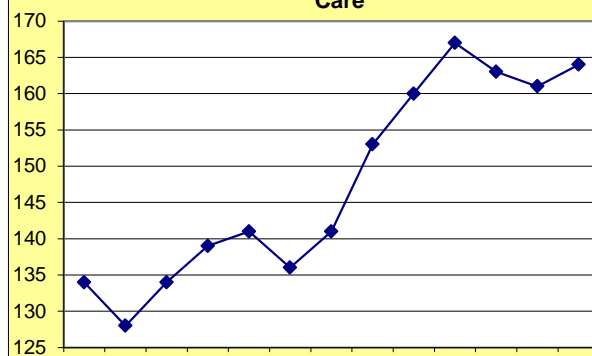
	WCC Foster Care	Placed for Adoption	Residential Home/School	Agency/O LA Foster Care	Relative/Friend Foster Care	Placed with Parents/Person with PR	Other Placement e.g. Independent Living, Mother & Baby Unit, Secure Unit
N. Warks Ch&F Team	28	6	0	18	2	1	0
Bedworth Children's Team	57	18	7	26	12	6	1
Nuneaton Children's Team	42	17	3	23	12	4	0
Rugby Children's Services Team	50	8	4	24	10	5	0
Stratford Children's Team	30	7	1	12	11	2	0
Warwick District CAT	2	0	0	1	0	0	0
Warwick Children's Team	55	6	2	20	15	8	1
North IDS	1	0	5	3	0	0	1
South IDS	6	0	8	1	0	0	1
Leaving Care - North Warks	4	0	2	0	0	0	1
Leaving Care - Nuneaton & Bedworth	13	0	4	5	3	5	6
Leaving Care - Rugby	5	0	2	3	2	2	2
Leaving Care - Stratford	3	0	1	5	1	0	0
Leaving Care - Warwick	7	0	2	3	2	0	3
Leaving Care - No Allocated District	1	0	0	0	2	0	2
Asylum Seekers	20	0	0	19	0	0	39
Youth Justice	0	0	0	1	0	0	0
No Allocated Team	1	0	0	0	0	0	0
Warwickshire (TOTAL)	325	62	41	164	72	33	57

2.4 Children Looked After by Placement Type

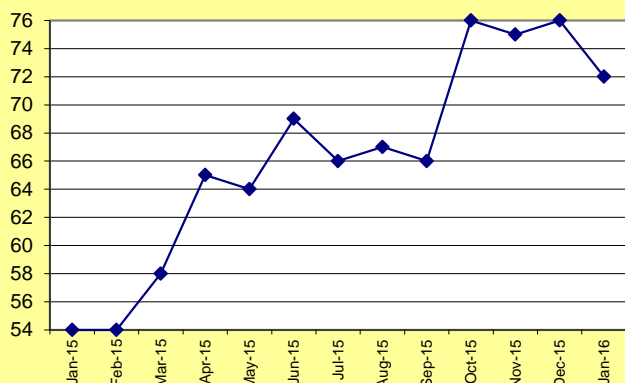
Children Looked After in WCC Foster Care



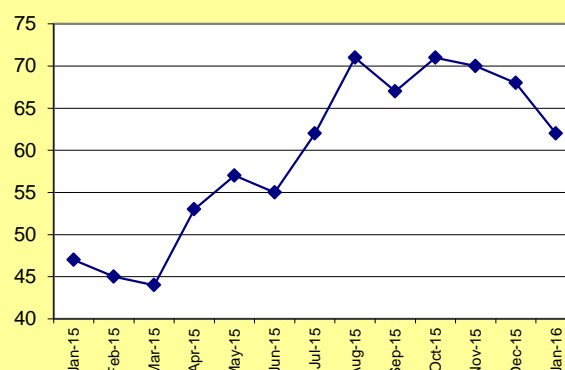
Children Looked After in Agency/O LA Foster Care

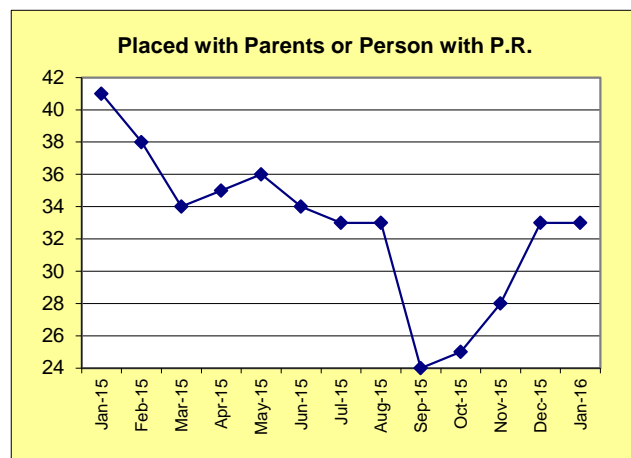
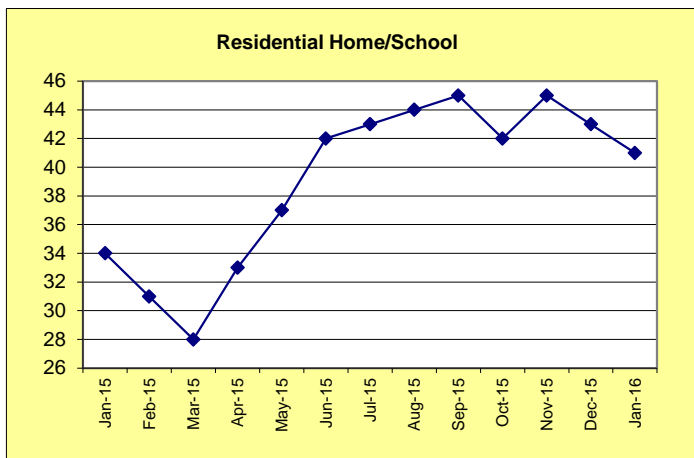


Relative/Friend Foster Care



Placed for Adoption





At 31 January 2016, increases were seen in children placed in WCC foster care (up 3 to 325) and children placed in agency/OLA foster care (up 3 to 164).

Decreases were seen this month in children placed for adoption (down 6 to 62), children placed in residential home / school (down 2 to 41), children placed with relative/friend foster carer (down 4 to 72) and children placed in other placements (down 8 to 57) whilst children placed with parents or person with P.R. remained the same as the previous

2.5 Looked After Children at month end by Legal Status

	Aug-15	Sep-15	Oct-15	Nov-15	Dec-15	Jan-16
Interim Care Order	New table - data to be added for previous months	67	63	76	77	77
Full Care Order		319	324	319	315	316
S20 Accommodation		255	262	278	279	268
Placement Order		91	97	95	97	92
Police/Emergency Protection Order		0	1	0	0	0
On Remand or Committed for Trial/Sentence		0	0	0	0	1
Warwickshire Total		732	747	768	768	754

As at 31 January 2016, the largest cohort of children looked after continue to be those subject to a full care order

The volume of children subject to S20 Accommodation has seen a decrease in the last month, down by 11 children between 31 December 2015 to 31 January 2016. However, this decrease would correspond with our decrease in unaccompanied asylum seekers during January who are all accommodated under S20, down by 7 children between 31 December 2015 to 31 January 2016.

2.6 Looked After Children 'Missing' or 'Away from placement without

	Aug-15	Sep-15	Oct-15	Nov-15	Dec-15	Jan-16
Number of instances of Child(ren) missing that are still recorded as missing from care at the end of the month.	4	4	9	6	6	0
Number of instances of child(ren) missing during the month that have since returned to placement.	12	1	2	10	16	19
Warwickshire (TOTAL)	16	5	11	16	22	19
Number/Percentage of Children who received a Return Interview after their last missing episode	<i>Data to be provided by Multi-Agency CSE Team</i>				10/16 = 62.5%	TBC
Number/Percentage of Return Home Interviews conducted within 72 hours	<i>Data to be provided by Multi-Agency CSE Team</i>				3/16 = 18.8%	TBC
Number/Percentage of CLA who did not receive a Return Home Interview due to being placed out of county	<i>Data to be provided by Multi-Agency CSE Team</i>				6/16 = 37.5%	TBC

During January 2016 there were 19 episodes of a child missing or away from their placement without authorisation. This related to 7 individual children with four children having multiple missing episodes during the month.

At 31 January 2016, there were no children with missing episodes still open on Carefirst suggesting that these children were still missing and yet to be found. Business & Commissioning Intelligence have created an automated weekly report which shows all missing episodes that were either closed in the previous 7 days or where a missing episode remains open in order that these can be monitored more closely.

Of the 19 episodes of a child missing or away from placement without authorisation where a child was subsequently found:

- XX children (XX%) received a Return Home Interview. Of these 10 children, XX (XX%) received a Return Home Interview within 72 hours
- XX children (XX%) did not receive a Return Home Interview due to being placed out of county.

2.7 Health Outcomes for Looked After Children

	Jul-15	Aug-15	Sep-15	Nov-15	Dec-15	Jan-16
% of CLA at end of month who have received a Health Assessment in the last 12 months				78.9%	83.2%	80.6%
% of CLA at end of month who have refused a Health Assessment in the last 12 months				3.1%	3.8%	3.7%

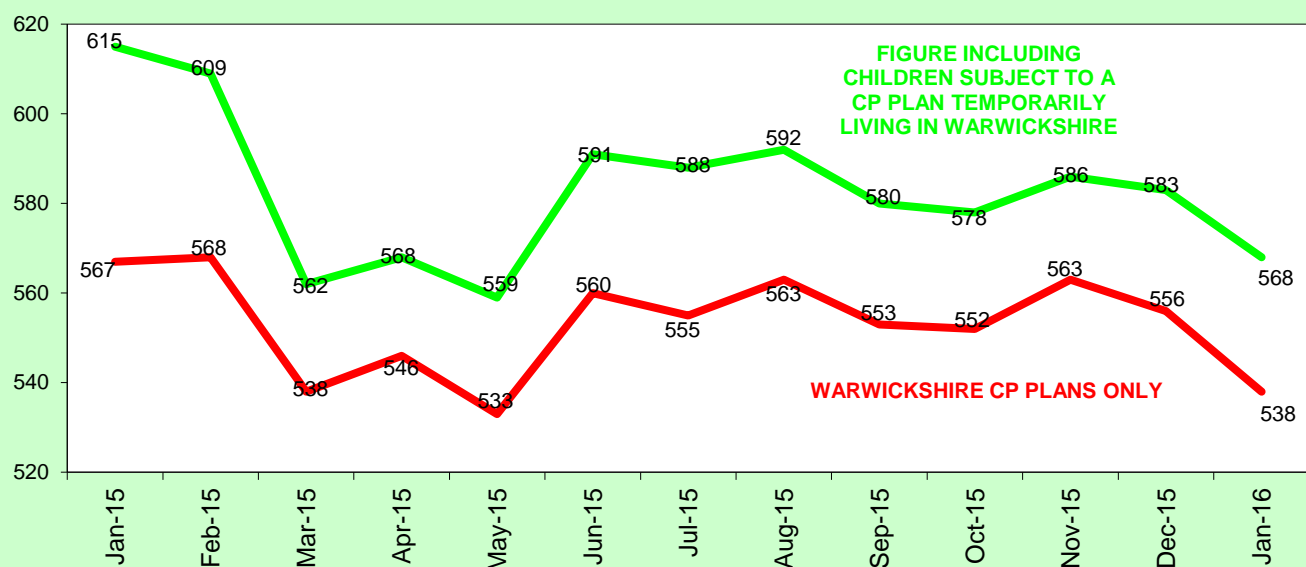
NB. These % are based on all CLA including those looked after for less than 28 days

2.8 Education Outcomes for Looked After Children

	Jul-15	Aug-15	Sep-15	Oct-15	Nov-15	Dec-15
PEP Completion rates	Virtual School to provide this data in future - at present unable to do so					

3. CHILD PROTECTION

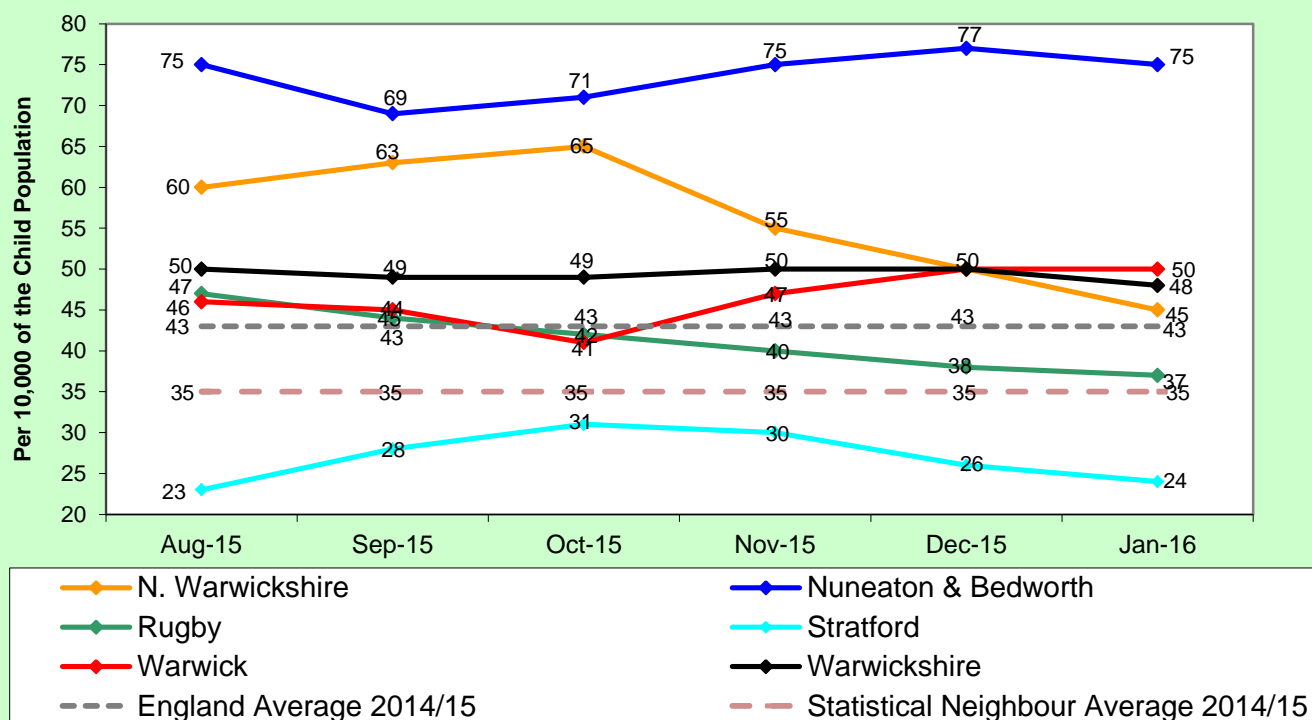
3.1 Total No. of Children Subject to a Child Protection Plan



The number of children in Warwickshire subject to a Child Protection Plan decreased by 18 to 538 as at 31 January 2016.

The number of children subject to a CP Plan in other local authorities, who are temporarily living in Warwickshire increased by 3 to 30 as at 31 January 2016.

3.2 CP per 10,000 of the Child Population by District

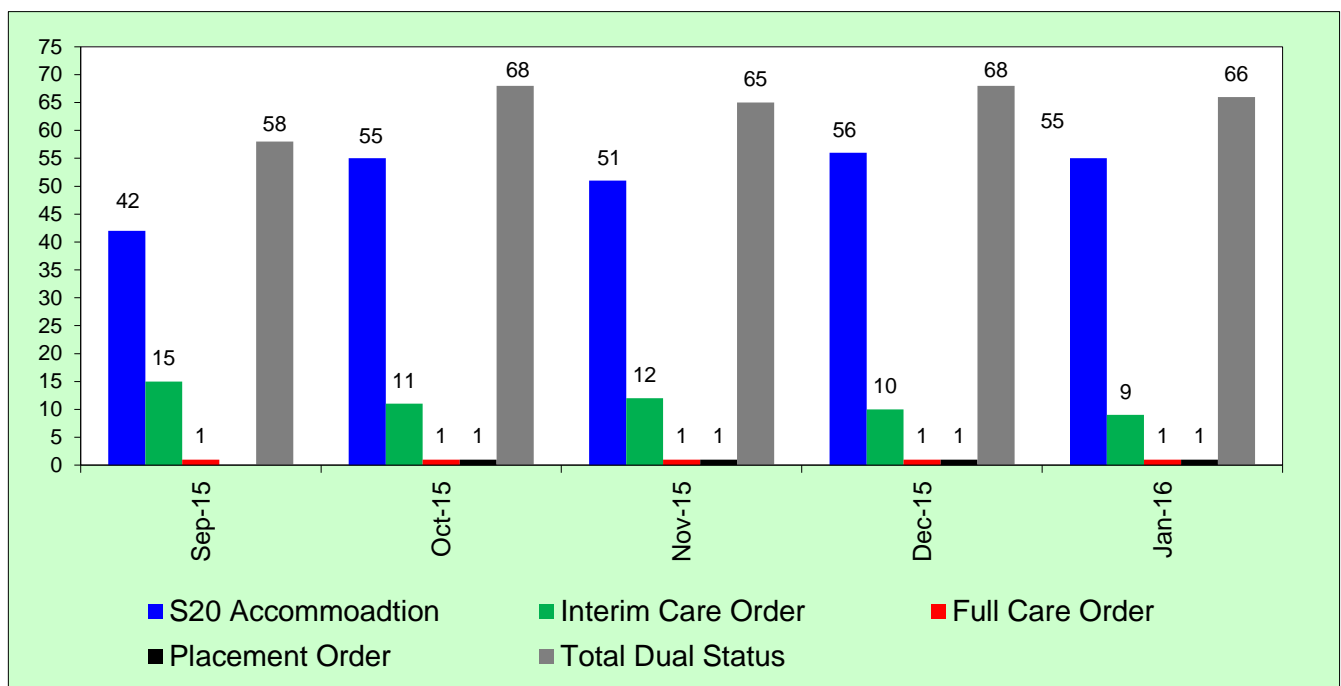


Please note than from June 2015 onwards the rates per 10,000 are based on the 0-17 population mid-year population estimates for 2014 published by the Office for National Statistics in June 2015.

3.3 Duration of Child Protection Plans

	Aug-15	Sep-15	Oct-15	Nov-15	Dec-15	Jan-16
Under 3 Months	New table - previous months data to be added			167	161	136
3 - 6 Months				131	113	121
6 - 9 Months				78	106	120
9 Months - 1 Year				68	63	52
1 - 2 Years				105	99	99
2 Years +				14	14	10
Total				563	556	538

3.4 Children Subject to a Child Protection Plan & Looked After (Dual Status) by Legal Status



4. FOSTERING

4.1 Enquiries made by District

	Aug-15	Sep-15	Oct-15	Nov-15	Dec-15	Jan-16
North Warwickshire	3	2	4	0	2	7
Nuneaton & Bedworth	12	5	9	17	9	11
Rugby	3	2	8	9	2	3
Stratford	3	7	6	6	2	6
Warwick	5	9	9	5	5	8
Out of County	2	0	1	2	1	3
Warwickshire (TOTAL)	28	25	37	39	21	38

4.2 WCC Foster Carers approved during the month

	Aug-15	Sep-15	Oct-15	Nov-15	Dec-15	Jan-16
General/ Mainstream	3	1	0	2	3	1
Family & Friends	7	9	5	5	4	3
Family Link	0	0	0	0	0	0
Staying Put	0	0	0	0	0	0
Warwickshire (TOTAL)	10	10	5	6	7	4

4.3 New WCC Foster carer approvals in month by length of time it took to be approved

	Aug-15	Sep-15	Oct-15	Nov-15	Dec-15	Jan-16
Under 6 Months				5	4	2
6 to 9 Months				2	2	1
Over 9 Months				0	1	1

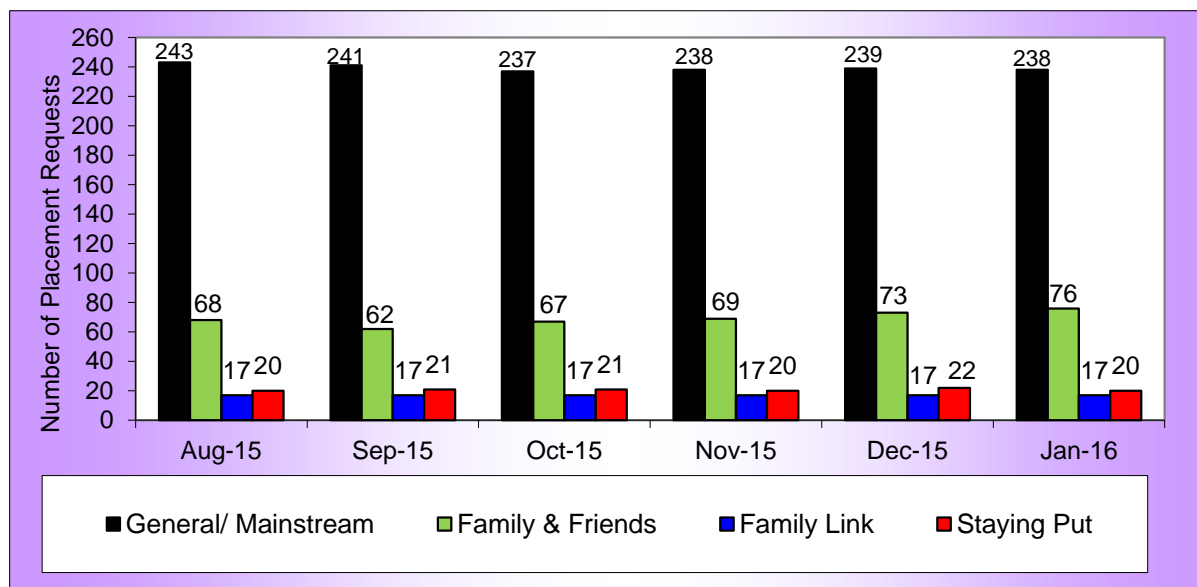
NB. For General/Mainstream foster care this is calculated from the date of initial enquiry to approval whilst for Family/Friends carers this is calculated from date of referral to approval

During January 2016, there were 4 foster carers approved. All of those approved under 6 months or between 6-9 months were family/friends carers whilst the one carer approved over 9 months from enquiry was a General/Mainstream Foster Carer.

4.4 Approvals Ended during the month

	Aug-15	Sep-15	Oct-15	Nov-15	Dec-15	Jan-16
General/ Mainstream	1	3	2	1	2	2
Family & Friends	4	2	3	1	1	1
Family Link	0	0	0	0	0	0
Staying Put	0	0	0	0	0	1
Warwickshire (TOTAL)	5	5	5	2	3	4

4.5 Approval Categories of Foster Care Households approved by WCC



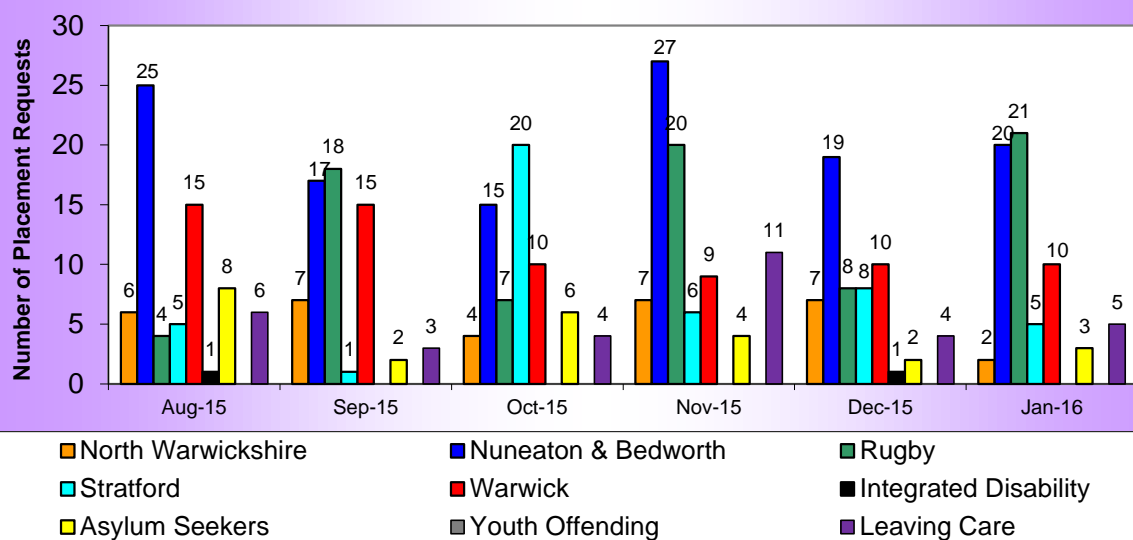
As at 31 January 2016 there were **333** foster care households in Warwickshire recorded on Carefirst. Four households are approved for two types of foster care.

There are currently **20** households approved to provide 'staying put' placements for young people aged 18+. Of these 20, 14 of these are also approved for foster care.

4.6 Percentage of foster carer annual reviews presented at fostering panel within timescales

	Aug-15	Sep-15	Oct-15	Nov-15	Dec-15	Jan-16
Number of Reviews that were within timescales				19	12	12
Number of Reviews which were out of timescales				5	15	3
Total Reviews completed within month				24	27	15
% of Reviews within Timescales during month				79.2%	44.4%	80.0%

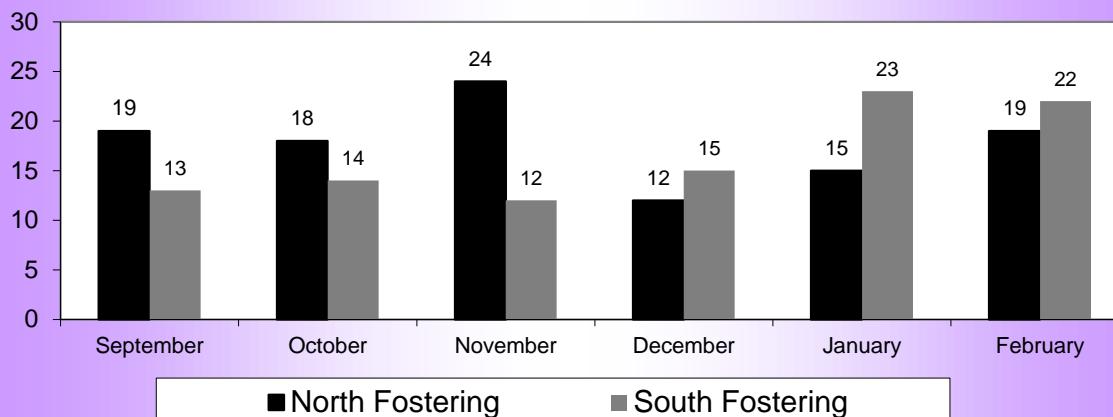
4.7 Foster Care Placement Requests during the month by District



Please note that this report pulls through where a 'placement request part 1' form has been completed by a children's team on Carefirst 6.

During January 2016 there were 66 placement requests recorded compared to 59 placement requests in the previous month.

4.8 Number of Foster Carers with one or more placements available



The above graph is created using a Carefirst report on current [General Foster Care](#) availability and counts the number of foster carers with places available according to Carefirst rather than the actual number of placements available. **Please note that an 'available' foster carer is defined by whether the 'available now' tick box has been checked on their approval screen.**

5. PRIVATE FOSTERING

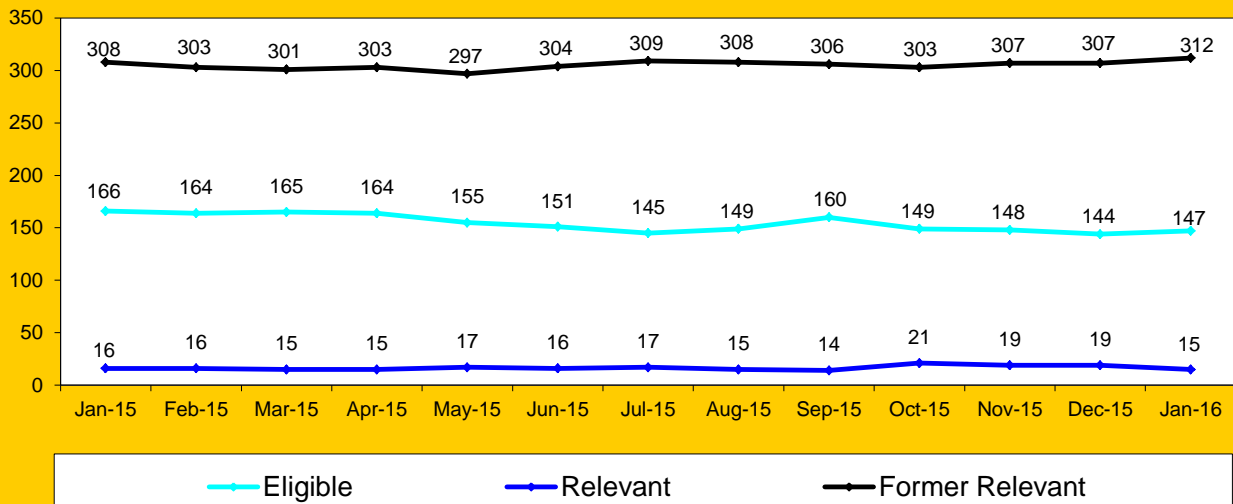
A privately fostered child is defined as a child under the age of 16 (18 if disabled) that is cared for by someone other than a close relative (i.e. a grandparent, brother, sister, uncle, aunt, or step-parent). A child is not privately fostered if the person caring for him or her has done so for fewer than 28 days and does not intend to do so for longer than that. Privately fostered children are not "looked after" children in the terms of section 22 of the Children Act 1989. However, Local Authorities have a responsibility to ensure that the welfare of privately fostered children is promoted, as identified in Part IX of the Children Act 1989, amended by section 44 of the Children Act 2004.

5.1 No. of Children Privately Fostered by Team during January 2016

	Aug-15	Sep-15	Oct-15	Nov-15	Dec-15	Jan-16
N. Warwickshire Children & Families	5	5	7	6	6	2
Bedworth Children's Team	0	0	0	0	0	4
Nuneaton Children's Team	0	0	0	0	0	0
Nuneaton District Children Services Tm	0	0	0	0	0	0
Rugby Childrens Services Team	5	2	3	3	3	2
Stratford/ Alcester	0	0	0	0	1	1
Southam/ Shipston	0	0	0	0	0	0
WDCAT	1	1	1	0	1	1
Warwick Children Services Team	0	0	0	0	0	0
YOT (North)	0	0	0	0	0	0
YOT (South)	0	0	0	0	0	0
Asylum Seekers	0	0	0	0	0	0
EDT	0	0	0	0	0	0
Integrated Disability Service	0	0	0	0	0	0
Unallocated	1	0	0	0	0	0
Total	12	8	11	9	11	10

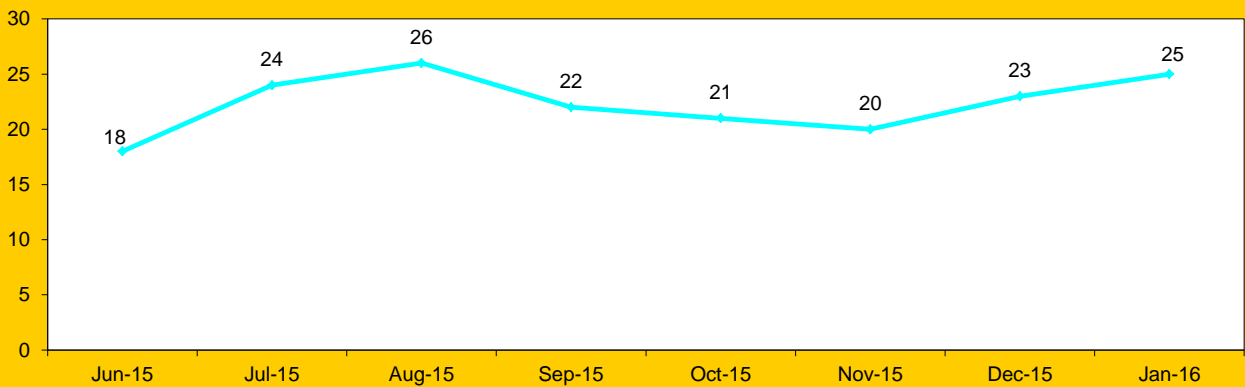
6. LEAVING CARE

6.1 Leaving Care



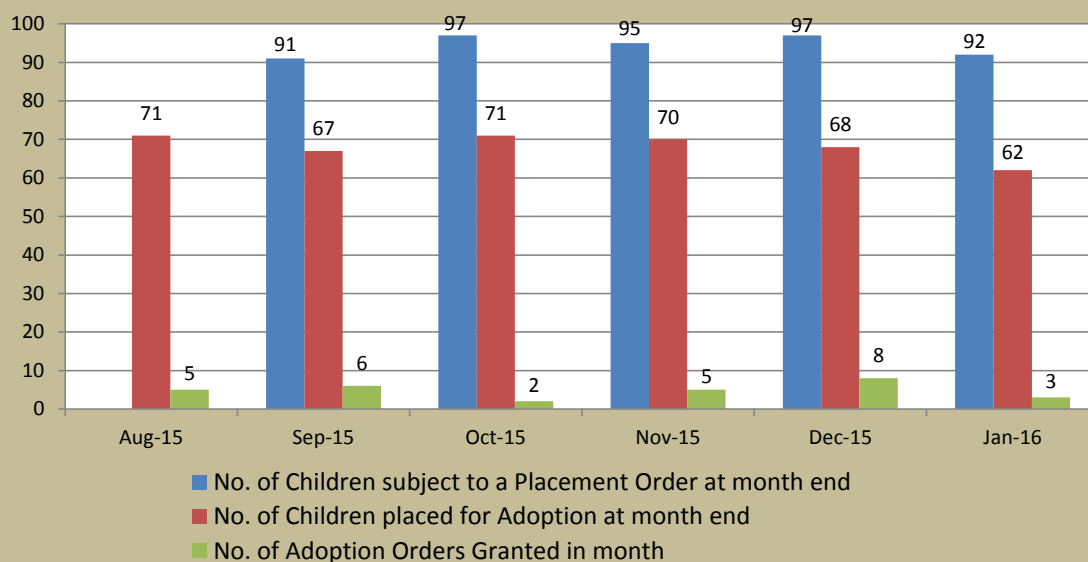
At 31 January 2016, Warwickshire's 16-21 leaving care population increased by 4 to 474. Of these, 147 were eligible and still in the care system while a further 324 were either relevant or former relevant. All of these children have been looked after for 13 weeks or more since the age of 14 and were looked after at some point of their 16th year.

6.2 Number of Young People aged 18+ in a Staying Put Placement



8. ADOPTION

7.1 Adoption Activity



As at 31 January 2016, there were 92 children subject to a placement order.

There has been a considerable increase (31.9%) in children placed for adoption since 31st March 2015 when there were 47 children placed for adoption. Please note that of the 62 children placed for adoption at 31 January 2016, 61 of these children were subject to a placement order with one recorded as having a legal status of S20 Accommodation (this child is a relinquished baby).

Three children were discharged from care after having their adoption order granted during January 2016.

7.2 Duration of Children subject to Placement Orders but not yet placed for Adoption

	Aug-15	Sep-15	Oct-15	Nov-15	Dec-15	Jan-16
Under 3 Months				11	11	3
3 - 6 Months				1	2	10
6 - 9 Months				1	0	0
9 Months - 1 Year				0	1	1
1 - 2 Years				3	2	3
2 Years +				14	14	14

As at 31 January 2016, there were 31 children subject to a placement order who were not yet placed for adoption. The largest proportion of which had been subject to a placement order for over 2 years.