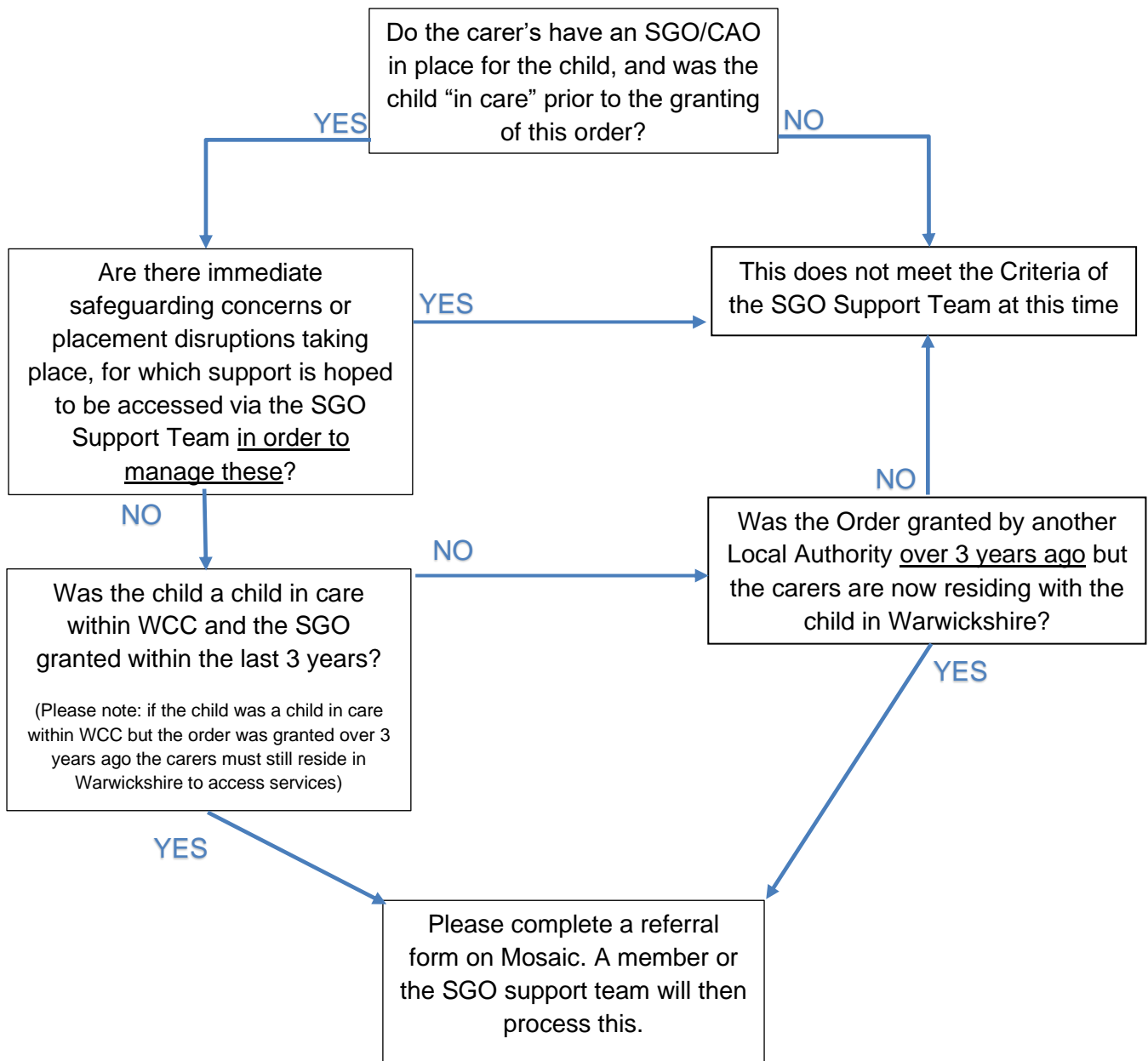


## WARWICKSHIRE SGO SUPPORT TEAM GUIDE

If a child is living away from their parent with a connected person to them, under either a Special Guardianship Order or a Child Arrangements Order, the local authority under The Special Guardianship Regulations 2005 (amended in 2016) has a duty to provide support and guidance subject to certain criteria being met. The SGO Support Team has been introduced in response to these regulations, and in response to the feedback we have gained from carers about what support they need to make their placements work.



### What happens next?

- A representative from our team will contact you to discuss the family's needs in greater detail
- If the SGO Support Team is the right fit for the family, a joint visit to meet the family could take place and a worker from the SGO Support Team can come along to your next meeting with the family to learn more about them and to begin building a relationship with them
- A needs assessment, where appropriate, may then be completed on Mosaic by our team to develop a package of care around the family. (A Special Guardianship Support Plan template to be completed on Mosaic)
- Carers are then supported on an ongoing basis with reviews taking place as and when required with the family on a 'needs led' basis. (Post SGO Support Team Review available on Mosaic for this purpose.)

For further Information please contact:

Tel: 01926 742228

Email: [sgo@warwickshire.gov.uk](mailto:sgo@warwickshire.gov.uk)