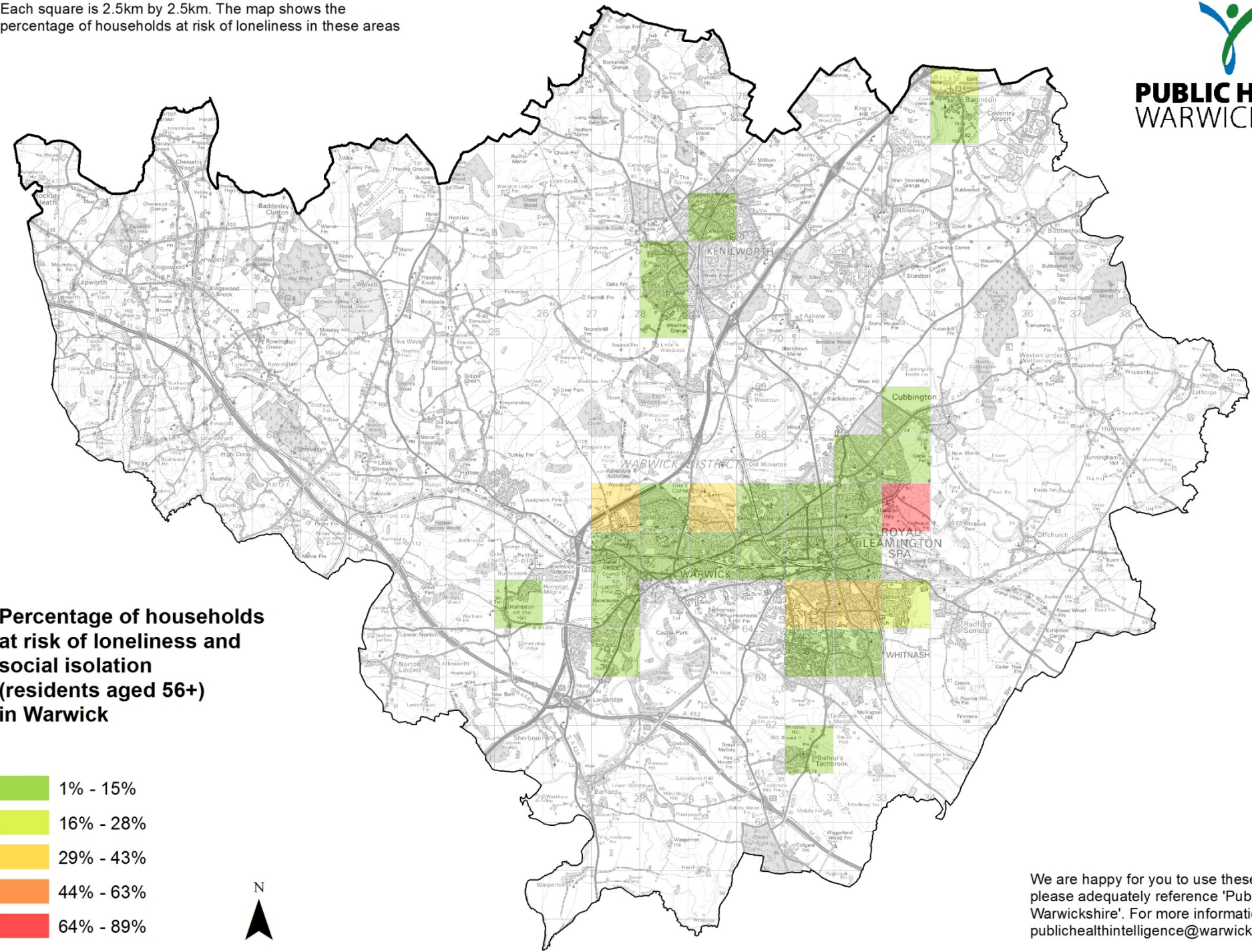


Each square is 2.5km by 2.5km. The map shows the percentage of households at risk of loneliness in these areas



**PUBLIC HEALTH
WARWICKSHIRE**



**Percentage of households
at risk of loneliness and
social isolation
(residents aged 56+)
in Warwick**

- 1% - 15%
- 16% - 28%
- 29% - 43%
- 44% - 63%
- 64% - 89%



We are happy for you to use these maps, but please adequately reference 'Public Health Warwickshire'. For more information, contact publichealthintelligence@warwickshire.gov.uk