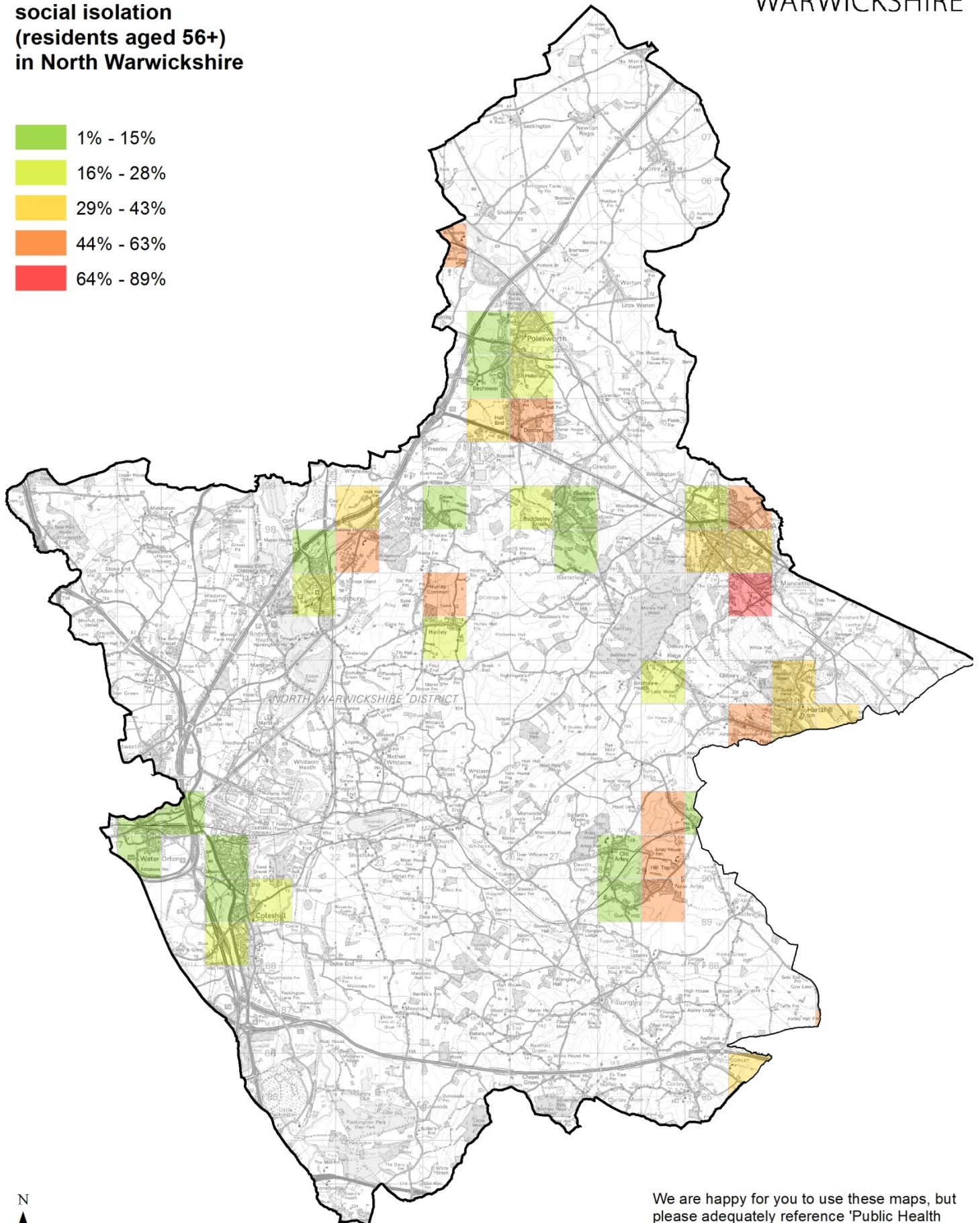
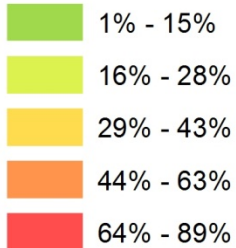


Each square is 2.5km by 2.5km. The map shows the percentage of households at risk of loneliness in these areas



**PUBLIC HEALTH
WARWICKSHIRE**

**Percentage of households
at risk of loneliness and
social isolation
(residents aged 56+)
in North Warwickshire**



N



We are happy for you to use these maps, but please adequately reference 'Public Health Warwickshire'. For more information, contact publichealthintelligence@warwickshire.gov.uk