

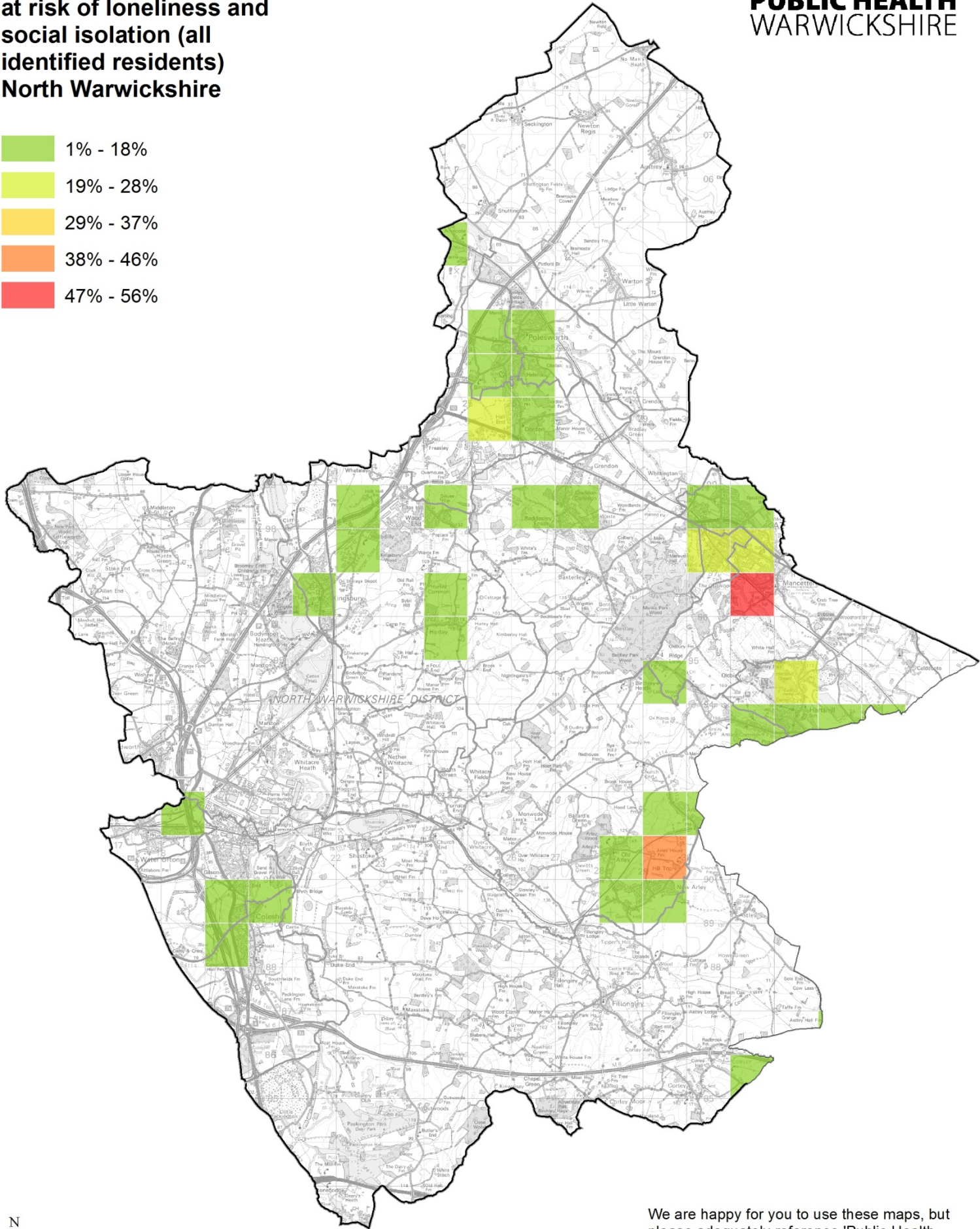
Each square is 2.5km by 2.5km. The map shows the percentage of households at risk of loneliness in these areas



**PUBLIC HEALTH
WARWICKSHIRE**

**Percentage of households
at risk of loneliness and
social isolation (all
identified residents)
North Warwickshire**

- 1% - 18%
- 19% - 28%
- 29% - 37%
- 38% - 46%
- 47% - 56%



We are happy for you to use these maps, but please adequately reference 'Public Health Warwickshire'. For more information, contact publichealthintelligence@warwickshire.gov.uk