

# PLACE BASED NEEDS ASSESSMENT WELLESBOURNE, KINETON & SHIPSTON APPENDIX

Warwickshire Joint Strategic Needs Assessment

2020

---

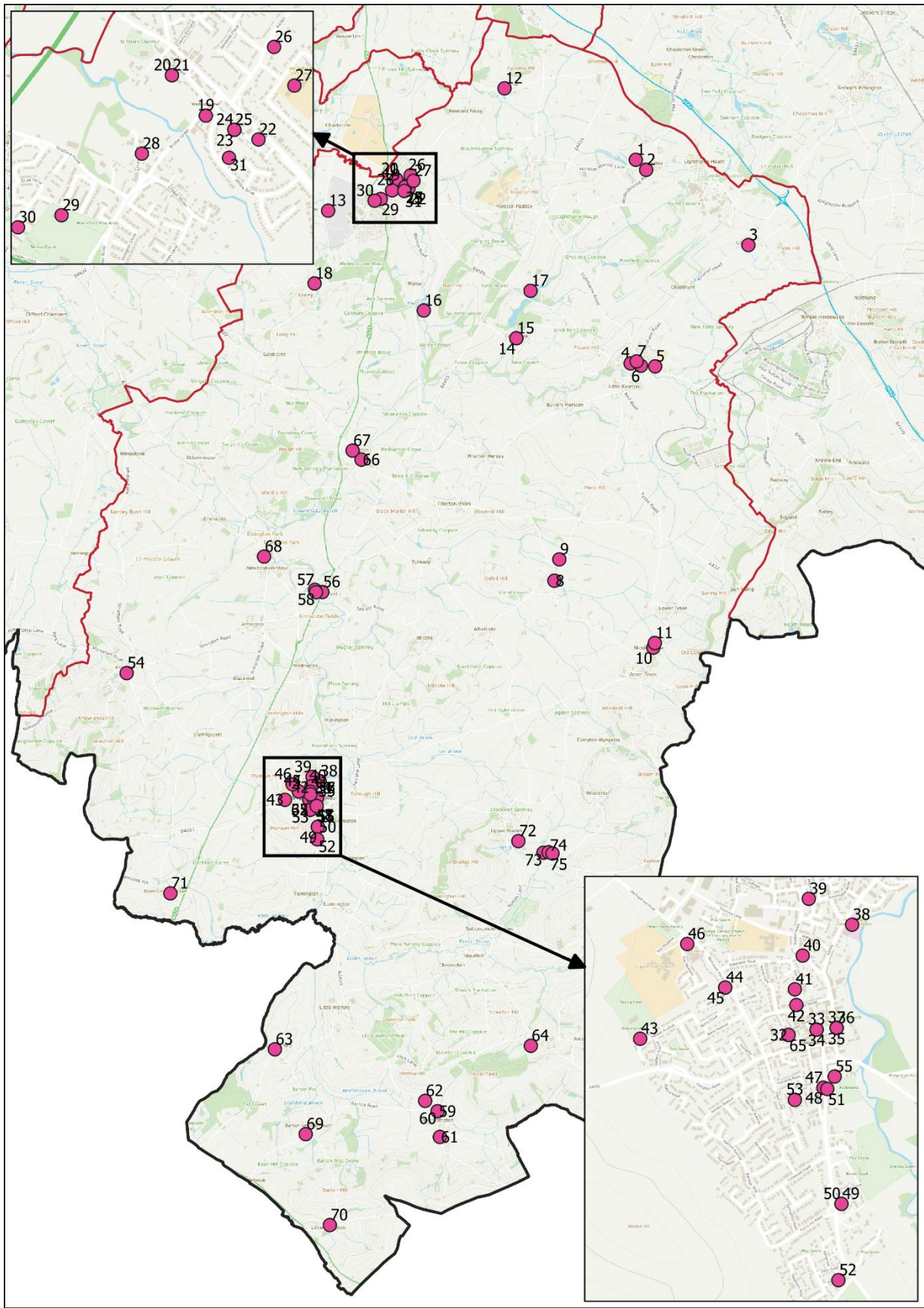


## CONTENTS

Appendix A – Community assets

Appendix B – Stratford District Council Residents Survey 2019

APPENDIX A – COMMUNITY ASSETS



Map Ref	Organisation & Contact Details	Activities, Classes, Events	Children & Families	Young People	Older People	Community Venues & Meeting Points	Community Organisations & Social Groups	Leisure & Recreational Activities	Advice & Support	Community Cafés & Foods	Health & Wellbeing	Education & Learning
1	St Laurence's Church	Church				✓						
2	Lighthorne Village Hall	Community events, lunch club, film club, parish council meetings, amateur dramatics, history society, music				✓	✓	✓	✓	✓	✓	✓
3	St Giles C of E Church	Church				✓						
4	Fosse Foodbank - Kineton	For people in crisis who find themselves without food							✓	✓	✓	
5	Kineton High School	School, FitSteps, Dance, Wellesbourne Badminton Club	✓	✓		✓	✓	✓			✓	✓
6	Kineton Village Hall	Carers 4 Carers, Community Library, Local History Group, Swan Singers, Art Group.	✓	✓	✓	✓	✓		✓		✓	✓
7	St Francis of Assisi	Church				✓						
8	St Lawrence C of E Church	Church				✓						
9	Pillerton Village Hall	Dancing, parties, clubs, badminton	✓	✓	✓	✓		✓			✓	
10	Tysoe Methodist Church	Church				✓						

Map Ref	Organisation & Contact Details	Activities, Classes, Events	Children & Families	Young People	Older People	Community Venues & Meeting Points	Community Organisations & Social Groups	Leisure & Recreational Activities	Advice & Support	Community Cafés & Foods	Health & Wellbeing	Education & Learning
11	Assumption of the Blessed Virgin Mary	Church				✓						
12	Ashorne Village Hall	Sports facilities, lunch club, WI, village walks, film club				✓	✓	✓		✓	✓	
13	Wellesbourne Aviation Group Museum	History of Wellesbourne Airfield.						✓				✓
14	St Mary & St Margaret C of E Church	Church				✓						
15	St Peter's & St Paul's Church	Church				✓						
16	Parish Church of St James	Church				✓						
17	Compton Verney House Trust	120 acres of parkland and lake, art gallery, café, dementia café, orienteering, Tai Chi, museum	✓		✓	✓	✓	✓	✓	✓	✓	✓
18	St Nicholas Church	Church				✓						
19	Wellesbourne Choral Society	Singing				✓	✓	✓				
20	Wellesbourne & District Lions Club	Non-political service organisation.				✓	✓					
21	St Peters Church	Church, bellringing, mothers union, St Peter's Singers, University of the Third Age,	✓	✓	✓	✓	✓	✓				

Map Ref	Organisation & Contact Details	Activities, Classes, Events	Children & Families	Young People	Older People	Community Venues & Meeting Points	Community Organisations & Social Groups	Leisure & Recreational Activities	Advice & Support	Community Cafés & Foods	Health & Wellbeing	Education & Learning
		bridge club, childcare and pre-school group, craft group, slimming club, youth group.										
22	Wellesbourne Library	Wellies Children's Centre, Muddy Puddles Baby & Toddler Group	✓	✓			✓	✓				✓
23	Wellesbourne Village Hall	WRAP (Warwickshire Reminiscence Action Project) - focus on dementia, dementia cafe, Zumba, Oscars Carers Group, dancing, fitness classes, flower arranging, WI, karate, walking for Health.			✓	✓	✓	✓	✓	✓	✓	
24	Wellesbourne and Walton Local History Group	History group						✓				✓
25	Wellesbourne Parish Council	Council meetings, Citizens Advice				✓	✓		✓			
26	Wellesbourne C of E Primary and Nursery School	School										✓
27	Wellesbourne C of E Primary School	School, zumba				✓	✓	✓			✓	✓

Map Ref	Organisation & Contact Details	Activities, Classes, Events	Children & Families	Young People	Older People	Community Venues & Meeting Points	Community Organisations & Social Groups	Leisure & Recreational Activities	Advice & Support	Community Cafés & Foods	Health & Wellbeing	Education & Learning
28	Chedham's Yard	Themed events about the yard, tours, demonstrations, light refreshments.	✓			✓	✓	✓		✓		✓
29	Hastings House Medical Centre	GP									✓	
30	Wellesbourne Sports & Community Centre	Fitness suite and classes, 3G pitches, tennis and netball courts. Art Group				✓	✓	✓			✓	
31	Stratford Beekeeping Association	Beekeepers						✓				
32	Slimming World	Slimming club					✓				✓	
33	Shipston on Stour Rotarians	Friendly club					✓					
34	Stour Valley Lions	Community group					✓		✓			
35	St Edmunds C of E Church	Church, Warwickshire Carer Wellbeing Service Carer Clinic			✓		✓	✓	✓		✓	
36	Shipston Library	Library, Silver Surfers computer lessons, Story Stomp, Rhyme Time	✓	✓	✓			✓	✓			✓
37	Quakers	Friends meeting house				✓			✓			
38	Ellen Badger Hospital	Community hospital							✓		✓	

Map Ref	Organisation & Contact Details	Activities, Classes, Events	Children & Families	Young People	Older People	Community Venues & Meeting Points	Community Organisations & Social Groups	Leisure & Recreational Activities	Advice & Support	Community Cafés & Foods	Health & Wellbeing	Education & Learning
39	Shipston Rugby Club	Rugby club						✓			✓	
40	Stour Singers	Choral group						✓				
41	Age UK lunch Club	Bingo, older people lunch club			✓			✓		✓		
42	St John's Ambulance	Volunteer medical support					✓				✓	
43	Sheldon Bosley Hub	<b>Bingo</b>			✓		✓	✓				
44	Shipston Arts and Crafts Society	Arts and crafts, bridge, choir, Shipston Stitchers				✓	✓	✓				✓
45	Our Lady & St Michael Catholic Church	Church				✓						
46	Shipston Youth Club	Youth club, table tennis, pool		✓			✓	✓		✓	✓	
47	Shipston Widows	Social lunch			✓		✓	✓		✓	✓	
48	Methodist Church	Church, Shipston Music Society				✓	✓	✓			✓	
49	Norgren Bowls Club	Bowls						✓				
50	Shipston Excelsior Football	Football, lawn tennis, cricket	✓	✓	✓		✓	✓			✓	
51	Guides/scouts	Scouts and guides, baby and toddler group	✓	✓		✓	✓					
52	Stour Valley Baptist Church	Church				✓						



Map Ref	Organisation & Contact Details	Activities, Classes, Events	Children & Families	Young People	Older People	Community Venues & Meeting Points	Community Organisations & Social Groups	Leisure & Recreational Activities	Advice & Support	Community Cafés & Foods	Health & Wellbeing	Education & Learning
53	Age UK Lunch Club	Older people lunch club, singing, dementia cafe			✓		✓	✓		✓	✓	
54	Ilmington Village Hall	Pilates, film nights, amateur dramatics, parties, quiz nights, emergency heart defibrillator	✓	✓	✓	✓	✓	✓			✓	
55	Shipston Town Band	Brass band					✓	✓				
56	Rotary Club	Humanitarian club					✓					
57	St Mary's Church	Church				✓						
58	St Gregory's Church	Church				✓						
59	St Peter & St Paul C of E	Church				✓						
60	Long Compton Cricket Club	Cricket club, sports				✓		✓				
61	Long Compton Bowls Club	Bowls club, history society, over 60's club, gardening club			✓	✓	✓	✓				
62	Long Compton Parish Council	Parish Council				✓						
63	St Michael & All Angels	Church				✓						
64	St Michael's Church	Church				✓						
65	Townsend Hall	Music classes, dance, toddler and baby group,	✓	✓	✓	✓	✓	✓			✓	

Map Ref	Organisation & Contact Details	Activities, Classes, Events	Children & Families	Young People	Older People	Community Venues & Meeting Points	Community Organisations & Social Groups	Leisure & Recreational Activities	Advice & Support	Community Cafés & Foods	Health & Wellbeing	Education & Learning
		community group, badminton, kick boxing, table tennis, amateur dramatics.										
66	Ettington Community Centre	Community centre, FitSteps, VeraFlow	✓	✓	✓	✓		✓			✓	
67	Parish Church of Holy Trinity & St Thomas of Canterbury	Church				✓						
68	Newbold on Stour Village Hall	Parties, meetings, dance, exercise classes, adult education	✓	✓	✓	✓	✓	✓		✓	✓	✓
69	St Lawrence's Church	Church				✓						
70	St Denys Church	Church				✓						
71	St Peter's Church	Church				✓						
72	Lower Brailes Village Hall	Parties, music events, dance classes, meetings, quizzes, summer concerts, sports events	✓	✓	✓	✓	✓	✓		✓	✓	
73	Stour Valley Probus	Friendly club					✓					
74	St George's C of E	Church				✓						
75	St Peter and Paul Church	Church				✓						

## APPENDIX B – STRATFORD DISTRICT COUNCIL RESIDENTS SURVEY 2019

Stratford District Council provided data from their 2019 Residents Survey. In total, the survey received over 1,800 postal self-completion questionnaire responses, 234 from residents residing in the JSNA area.

*Thinking generally, which of the things below would you say are most important in making somewhere a good place to live?*

	Wellesbourne Kineton Shipston %	Stratford District %
Health services	55	57
The level of crime	59	56
Access to countryside	40	36
Clean streets	31	32
Education provision	23	30
Affordable decent housing	35	29
Parks and open spaces	24	27
The level of traffic congestion	19	25
Shopping facilities	23	23
Broadband provision	26	22
Public transport	22	22
Road and pavement repairs	20	20
Transport links	17	18
Cultural facilities	13	15
Job prospects	13	13
Sports and leisure facilities	12	13
The level of pollution	14	12
Community activities	14	11
Activities for teenagers	8	10
Facilities for young children	10	10
Other	1	1
<b>UNWEIGHTED BASE: (All Respondents)</b>	<b>(392)</b>	<b>(1563)</b>

*Thinking about this local area, which of the things below, if any, do you think most needs improving?*

	Wellesbourne Kineton Shipston %	Stratford District %
The level of traffic congestion	25	46
Road and pavement repairs	39	44
Activities for teenagers	33	34
Public transport	35	32
Affordable decent housing	28	28
The level of crime	30	27
Transport links	23	23
Broadband provision	21	22
Health services	29	19
Shopping facilities	20	19

Clean streets	16	13
Facilities for young children	15	13
Job prospects	16	13
Community activities	10	10
The level of pollution	7	10
Sports and leisure facilities	12	10
Other	7	8
Parks and open spaces	9	7
Cultural facilities	6	7
Education provision	5	7
Access to the countryside	6	3
<b>UNWEIGHTED BASE: (All Respondents)</b>	<b>(403)</b>	<b>(1563)</b>

*Satisfaction with the local area as a place to live*

	<i>Wellesbourne / Kineton / Shipston</i>	<i>Stratford District</i>
	<i>%</i>	<i>%</i>
<i>Very satisfied</i>	50	46
<i>Fairly satisfied</i>	41	45
<i>Neither satisfied/dissatisfied</i>	5	5
<i>Fairly dissatisfied</i>	2	2
<i>Very dissatisfied</i>	2	2
<i>Base: (All Respondents)</i>	<i>(448)</i>	<i>(1787)</i>

*Overall, about how often over the last 12 months have you given unpaid help to any group(s), club(s) or organisation(s)?*

	<i>Wellesbourne / Kineton / Shipston %</i>	<i>Stratford District %</i>
<i>At least once a week</i>	17	16
<i>Less than once a week but at least once a month</i>	9	12
<i>Less often</i>	11	9
<i>I give unpaid help as an individual only and not through group(s), club(s) or organisation(s)</i>	9	9
<i>I have not given any unpaid help at all over the last 12 months</i>	48	50
<i>Don't know</i>	6	4
<i>Base: (All Respondents)</i>	<i>(448)</i>	<i>(1697)</i>

*How safe or unsafe residents feel when outside after dark*

	<i>Wellesbourne / Kineton / Shipston</i>	<i>Stratford District</i>
	<i>%</i>	<i>%</i>
<i>Very safe</i>	29	24
<i>Fairly safe</i>	49	47
<i>Neither</i>	10	15
<i>Fairly unsafe</i>	7	10
<i>Very unsafe</i>	5	5
<i>Base: (All Respondents)</i>	<i>(432)</i>	<i>(1742)</i>

*How safe or unsafe residents feel when outside in the day*

	<i>Wellesbourne / Kineton / Shipston</i>	<i>Stratford District</i>
	<i>%</i>	<i>%</i>
<i>Very safe</i>	72	66
<i>Fairly safe</i>	23	28
<i>Neither</i>	2	4
<i>Fairly unsafe</i>	1	1
<i>Very unsafe</i>	0	0
<i>Base: (All Respondents)</i>	<i>(436)</i>	<i>(1732)</i>

Anti-social behaviour - Used three examples for noisy neighbours or loud parties, groups hanging around the streets, and people using or dealing in drugs.

*Noisy neighbours or loud parties – How much of a problem*

	<i>Wellesbourne / Kineton / Shipston</i>	<i>Stratford District</i>
	<i>%</i>	<i>%</i>
<i>Not a problem at all</i>	63	59
<i>Not a very big problem</i>	26	31
<i>A fairly big problem</i>	9	7
<i>A very big problem</i>	2	3
<i>Base: (All Respondents)</i>	<i>(420)</i>	<i>(1722)</i>

*Groups hanging around the streets – How much of a problem*

	<i>Wellesbourne / Kineton / Shipston</i>	<i>Stratford District</i>
	<i>%</i>	<i>%</i>
<i>Not a problem at all</i>	58	50
<i>Not a very big problem</i>	30	35
<i>A fairly big problem</i>	10	12
<i>A very big problem</i>	2	4
<i>Base: (All Respondents)</i>	<i>(414)</i>	<i>(1718)</i>

*People using or dealing drugs – How much of a problem*

	<i>Wellesbourne / Kineton / Shipston</i>	<i>Stratford District</i>
	<i>%</i>	<i>%</i>
<i>Not a problem at all</i>	49	42
<i>Not a very big problem</i>	27	30
<i>A fairly big problem</i>	14	17
<i>A very big problem</i>	10	11
<i>Base: (All Respondents)</i>	<i>(366)</i>	<i>(1717)</i>

Accessing hospital services - Whether accessed hospital services in past twelve months for treatment either as an outpatient or as a patient staying a minimum of one night.

	<i>Wellesbourne / Kineton / Shipston</i>	<i>Stratford District</i>
	<i>%</i>	<i>%</i>
<i>Yes</i>	50	57
<i>No</i>	50	43
<i>Base: (All Respondents)</i>	<i>(435)</i>	<i>(1723)</i>