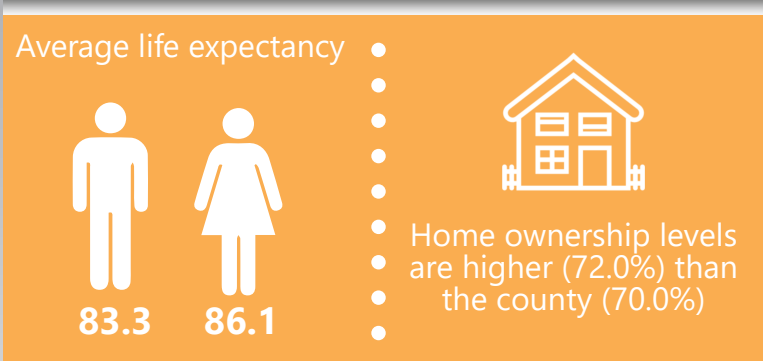
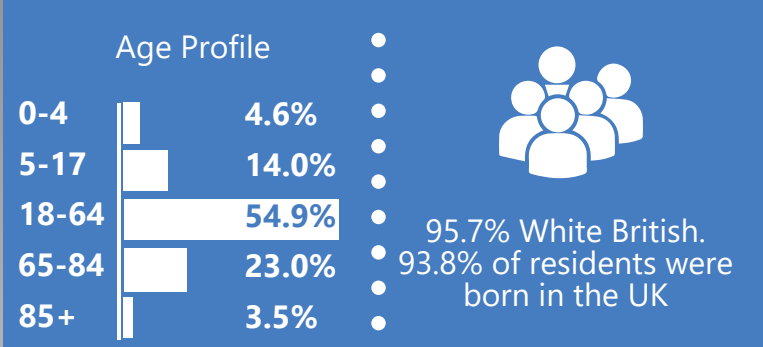
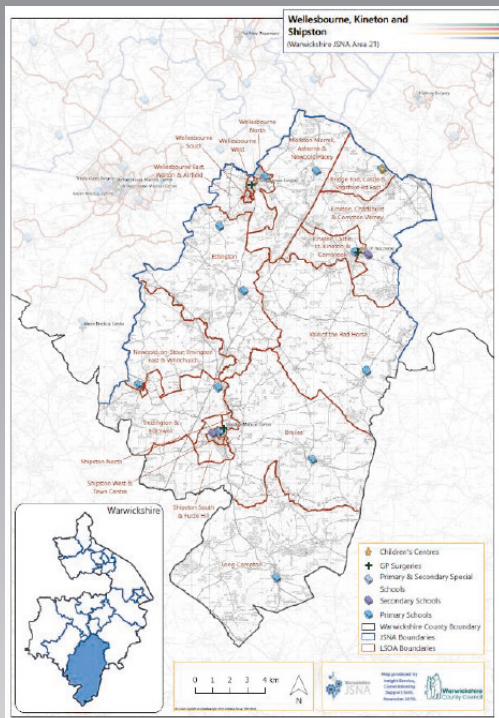




**28,322**  
population

**3.5%**  
increase in  
population  
since 2011



The recorded prevalence of depression at all 3 GP surgeries is **significantly higher** than the England rate of 9.9%



The 5-year average rate of **750** per 100,000 population for emergency hospital admissions (all ages) is lower than the county average of 865 per 100,000 population



The prevalence of asthma at all 3 GP surgeries is **significantly higher** than the England rate of 6.0%



Estimated smoking prevalence is better than the England average at all three surgeries across the JSNA area (England 16.7%)



The percentage of Reception aged children who were overweight or very overweight was **22.9%** (Warwickshire 21.3%)



The prevalence of hypertension is **18.5%** at Shipston Medical Centre and **16.9%** at Hastings House, significantly higher than the England rate (14.0%)



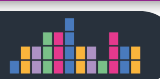
The prevalence of cancer is **significantly higher** than the England rate (3.0%) at Shipston Medical Centre and Hastings House



Screening rates for cervical and bowel cancer within the target periods are **significantly higher** than the England rates at Shipston Medical Centre and Hastings House



The prevalence of osteoporosis is **significantly higher** than the England rate (0.8%) at all three GP practises





99.6% of children within the JSNA are attending schools rated as "Good" or "Outstanding" by OFSTED



73.3% of Reception aged children achieved a good level of development (county average 71.8%)



53.0% of Key Stage 4 pupils achieved the expected standard in Reading, Writing and Maths (county average 49.5%)



The rate of children in care is 38.0 per 10,000 population, lower than the Warwickshire rate (55.5)



There were 315 referrals to the MASH per 10,000 population, lower than the Warwickshire rate (405)



1.7% of adults are social care service users in the JSNA area (Warwickshire 2.1%)



There were 612 people claiming Universal Credit in May 2019, one of the lowest of all the JSNA areas



According to Experian's socio-demographic classification tool, Mosaic, 42.7% of households are classed as "Country Living" (well off owners living in the countryside)



9 of the 17 LSOAs are in the least deprived 30% of LSOAs in England. One is in the most deprived 50%



12.4% of households in the LSOA of Brailes are fuel poor (Warwickshire 10.1%)



In the LSOA of Shipston West and Town Centre, 17.5% of children under 16 live in low income families (county average 11.9%)



34.4% of residents have level 4 qualifications or above (Warwickshire 28.8%)



In June 2019, mean house prices ranged from £220,334 in Wellesbourne West to £562,835 in Long Compton



The ASB rate is 14.9 per 1,000 population (Warwickshire 22.8)



The LSOA of Wellesbourne East, Walton & airfield had the highest crime rate (81.9 per 1,000) (Warwickshire 73.4)

