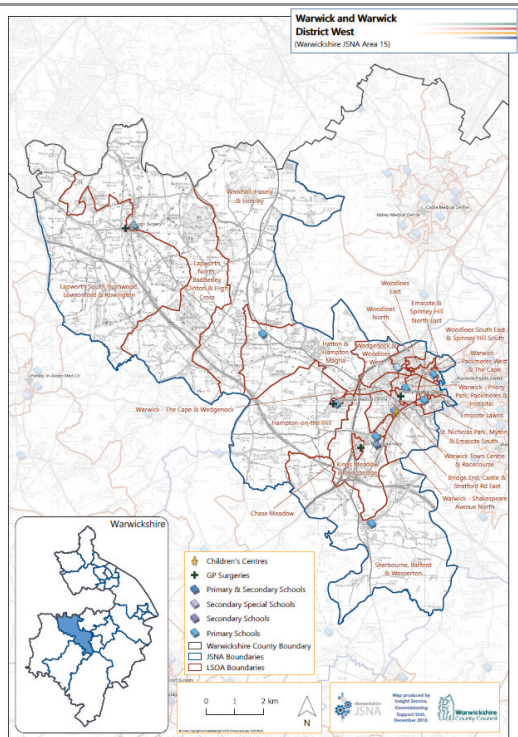


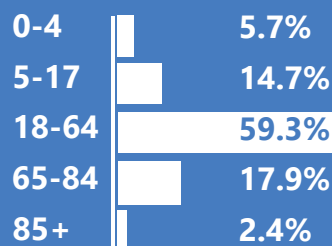


**34,074**  
population

**2.5%**  
increase in  
population  
since 2011

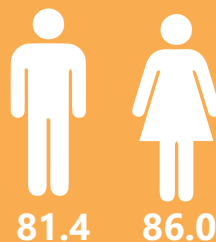


## Age Profile



89.5% White British.  
92.4% of residents were  
born in the UK

## Average life expectancy



Home ownership levels  
are lower (68.3%) than  
the county (70.0%)

The recorded prevalence of depression is **15.7%** at Avonside Health Centre, and **12.3%** at Chase Meadow Health Centre, significantly higher than the England rate of 9.9%



The 5-year average rate of **7,921** per 100,000 population for emergency hospital admissions (all ages) is higher than the county average of 7,878 per 100,000 population



The crude rate per 10,000 population for emergency admissions for injury (0-4 year olds) is

**136.7**

higher than the  
county average  
of 129.2



Estimated smoking prevalence is better than the England average at all five surgeries across the JSNA area (England 16.7%)



The prevalence of Atrial Fibrillation is **3.1%** at Lapworth Surgery and **2.7%** at Priors Medical Centre, higher than the England rate (2.0%)



The prevalence of hypertension is **15.4%** at Priors Medical Centre, significantly higher than the England rate (14.0%)



The prevalence of cancer is **significantly higher** than the England rate at Avonside Health Centre, Priors Medical Centre and Lapworth Surgery



Persons screened for cervical cancer within the target period is **significantly higher** than the England rate at all surgeries except Avonside Health Centre



Adult obesity rates vary from **4.8%** at Lapworth Surgery to **14.1%** at Avonside Health Centre (England 10.1%)





All children within the JSNA are attending schools rated as "Good" or "Outstanding" by OFSTED



70.8% of Key Stage 2 pupils achieved the expected standard in Reading, Writing and Maths (county average 65.4%)



52.7% of Key Stage 4 pupils achieved the expected standard in Reading, Writing and Maths (county average 49.5%)



The rate of Priority Families is 8.0

per 1,000 population, lower than the Warwickshire rate (9.3)

There were 359 referrals to the MASH per 10,000 population, below the county average of 405



1.8% of adults are social care service users in the JSNA area (Warwickshire 2.1%)



There were 402 households claiming Universal Credit in May 2019, one of the lowest of all JSNA areas



According to Experian's socio-demographic classification tool, Mosaic, 13.9% of households are classed as "Domestic Success" and 13.7% as "Prestige Positions"



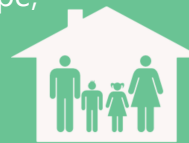
7 of the 21 LSOAs are in the least deprived 20% of LSOAs in England. One is in the least deprived 20-30%



7.9% of pupils are eligible for and claiming a Free School Meal, much lower than the county average (9.6%)



In the LSOA of Packmores West & The Cape, 24.6% of children under 16 live in low income families (county average 11.9%)



42.2% of residents have level 4 qualifications or above (Warwickshire 28.8%)



In June 2019, mean house prices ranged from £197,400 in Wedgenock & Woodloes West to £1,085,313 in Lapworth South, Bushwood, Lowsonford & Rowington



The ASB rate for Town Centre and Racecourse is 51.4 per 1,000 population (Warwickshire 22.8)



Mean concentration levels of Nitrogen Dioxide exceeded EU air quality standard objectives at 2 sites in 2018 (12 sites in 2017)

