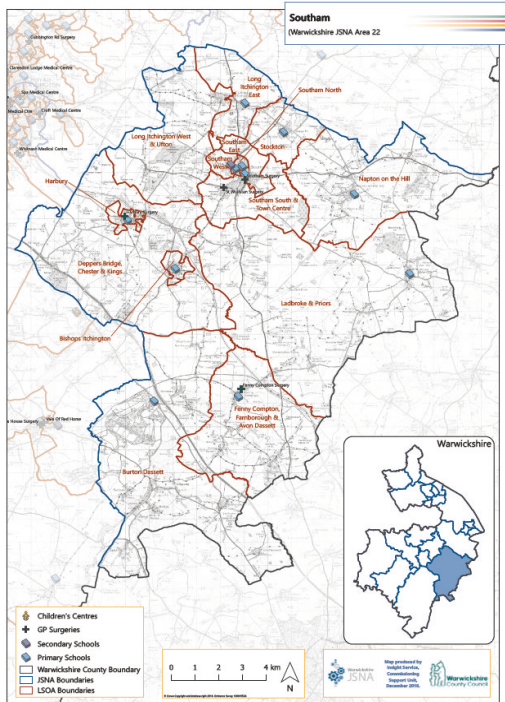


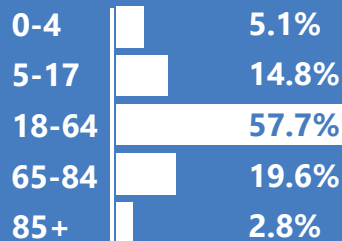


22,091
population

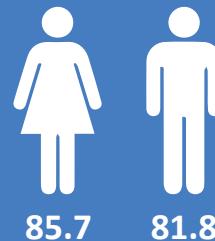
5.6%
increase in
population
between
2011 and
2018



Age Profile



Average life expectancy



95.7% White British and 4.3% Black, Asian and Minority Ethnic (BAME). Just 4.6% of the population were born outside of the UK



In terms of housing, 11.1% are privately rented, 12.3% are socially rented and home ownership levels are higher (74.1%) than the county (70.0%)



Three GP practices report figures significantly higher than the national rate for the recorded prevalence of hypertension (13.9%) in 2018/19. The rate at Harbury Surgery was 17.4%

The prevalence of atrial fibrillation in three GP practices was significantly higher than the England rate in 2018/19. The prevalence appears to have been rapidly increasing since 2014/15



The prevalence of strokes in two GP practices was significantly higher than the England rate (1.8%) in 2018/19. The rate at St Wulfstan Surgery was 2.9% and 2.5% at Southam Surgery



Whilst two GP practices are in line with national rates (3.0%) for the prevalence of cancer, both Harbury Surgery (4.2%) and Fenny Compton Surgery (4.4%) were significantly higher in 2018/19

Two GP practices report figures significantly higher than the national rate for the prevalence of osteoporosis (0.8%) in 2018/19. The rate at Fenny Compton Surgery is 1.6%



The recorded prevalence of asthma at Southam Surgery (8.3%) and Fenny Compton Surgery (8.4%) was significantly higher than the England rate (6.0%) in 2018/19



The recorded diagnosis of dementia (65+) at St Wulfstan Surgery was significantly higher than the England rate (0.8%) in 2018/19 at **3.3%**

The recorded prevalence of depression in adults (18+) at St Wulfstan was **13.6%** and has been significantly higher than the England rate every year since 2009/10



The percentage of patients (18+) who were obese (a BMI of 30 and over) was **13.4%** at St Wulfstan Surgery in 2018/19, significantly higher than the national figure (9.8%)



76.8%
of children achieved the Expected Level of Development at the end of Key Stage 2. This was an increase on 2018 (74.8%) and 2017 (74.5%) figures



55.2%
of students achieved the new Key Stage 4 measures of 9 to 5 (strong pass) in English and Maths, higher than the county average (49.5%)

In Southam & Feldon, the gap between pupils who are disadvantaged and those who are not is larger -

34.2
percentage points - than the county (33.5)



36.0%
of adult social care service users were receiving an older person (aged 65+), higher than the district (63.5%) and county rate (61.0%)



In 2018, Southam & Feldon had a Child Protection Plan rate of **31.9** per 10,000 child population, significantly higher than the county average (28.0)

There were **75**

families attached or claimed and attached to the Priority Families programme in 2019



A Stratford-on-Avon District resident would need **9.4 times** the average annual salary (£31,560) to be able to afford the average-priced house (£295,000)



Southam West LSOA had the lowest median household income (in 2015/16) of **£25,252**. Harbury LSOA had the highest (£36,242)

17.8% of the total population live in Burton Dassett LSOA and Ladbroke & Priors LSOA, which are amongst the 10% most deprived LSOAs in England in terms of barriers to housing and services



In Southam ward, approximately **1-18%** of all households have been identified as being at risk of loneliness



citizens advice

In 2018/19, **31.7%** of all Citizens Advice appointments were related to benefits, tax credits and Universal Credit issues

32.5%

of the population have achieved degree-level or above qualifications, higher than the county rate (28.8%)



There were **43** road traffic collisions (RTCs) where an injury was sustained in 2018/19 down from 71 in 2017/18



According to Experian's socio-demographic classification tool, Mosaic, **36.0%** of all households are classed as 'Senior Security'



The LSOA with the highest crime rate in 2018/19 was Deppers Bridge, Chester & Kings at **159.7** per 1,000 population (ranked 13th highest of all 339 Warwickshire LSOAs)