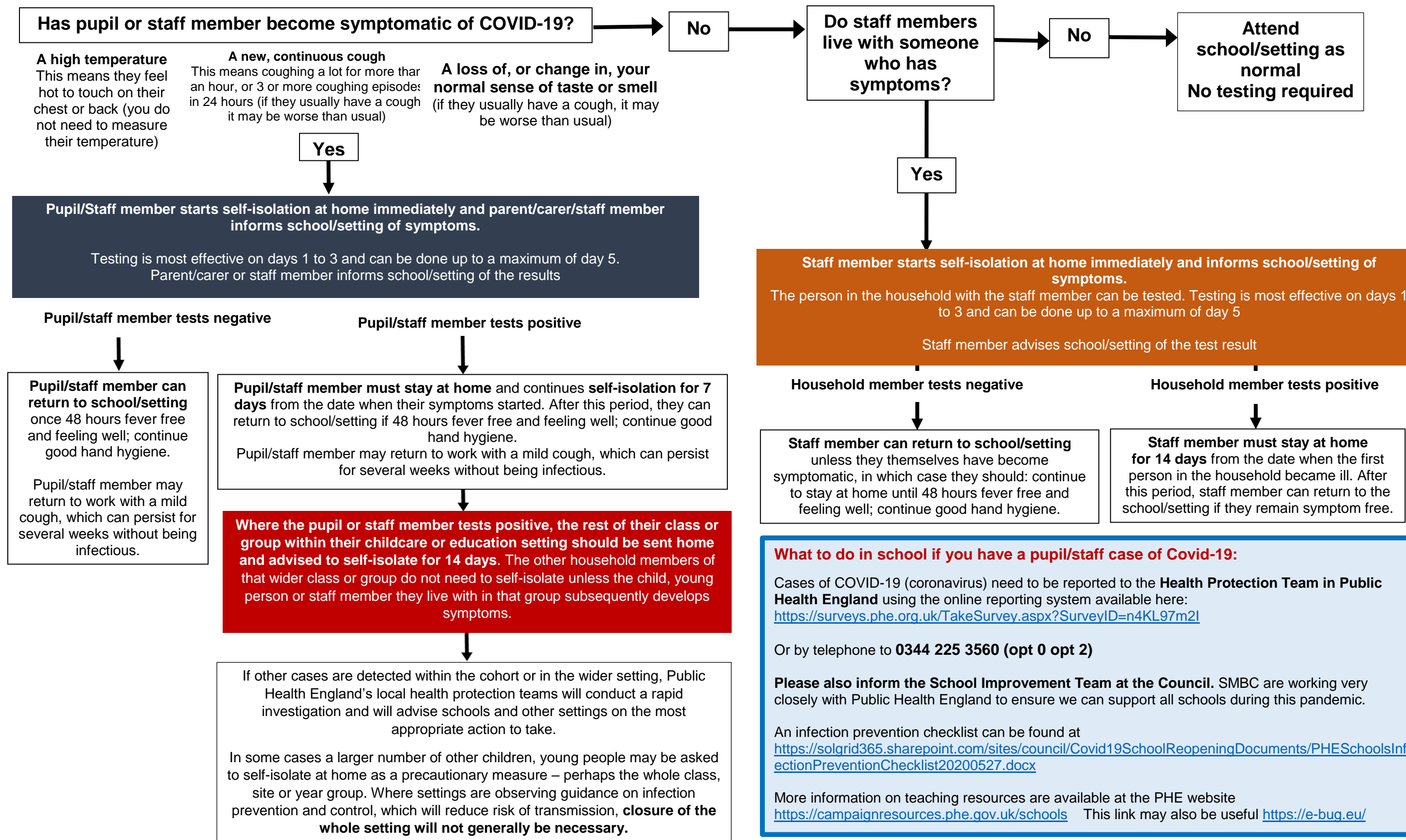


TESTING TO SUPPORT EDUCATIONAL SETTINGS – COVID-19



If a pupil, staff member or household member is unable to be tested within the first 5 days of symptoms, it is advised that they follow the national stay at home guidance:
www.gov.uk/government/publications/covid-19-stay-at-home-guidance/stay-at-home-guidance-for-households-with-possible-coronavirus-covid-19-infection
Guidance on testing and potential isolation can be found at www.gov.uk/government/publications/coronavirus-covid-19-implementing-protective-measures-in-education-and-childcare-settings/coronavirus-covid-19-implementing-protective-measures-in-education-and-childcare-settings#additional-questions