

## INTRODUCTION

### What is a Managed Move?

At WCC we recognise that at times a fresh start is needed. A 'Managed Move' is an agreement between the young person, their parent/carer, the Head Teacher at the home school and the Head at the receiving school.

The managed move from one school to another is a behaviour management strategy used when the current school have exhausted all other strategies. It is a voluntary agreement with a child/ young person (CYP) centred approach.

Managed moves provide real opportunities for personal learning and change. They can help break the cycle some CYP find themselves in. Partnership working between the home school, new school, young person, yourself (the parent /carer) and any other professional agency involved will support the transition and improve the quality of the move.

When appropriate a Mentor will be allocated to support the young person, school and parent/carer during the transition between schools. We know smooth transitions and clear collaborative working pathways between parents/carers and school can build lasting success for the young person, therefore our promise is to work collaboratively to achieve this.

### How Managed Moves can be successful

Good communication is important in supporting the success of a managed move.

### Further information

Further information can be found at <https://schools.warwickshire.gov.uk/early-help-targeted-support/alternative-provision>

Travel arrangements, will be discussed during the initial Managed Move meeting with the receiving school

Targets for a successful transition will be discussed and set at the initial meeting and reviewed at each subsequent meeting

Uniform expectations and support can be discussed with the host school during this meeting also.

Supporting the young person with their organisational skills will support both the CYP and the school to achieve success

Ensure you read all other documentation provided.

### The key is – early intervention

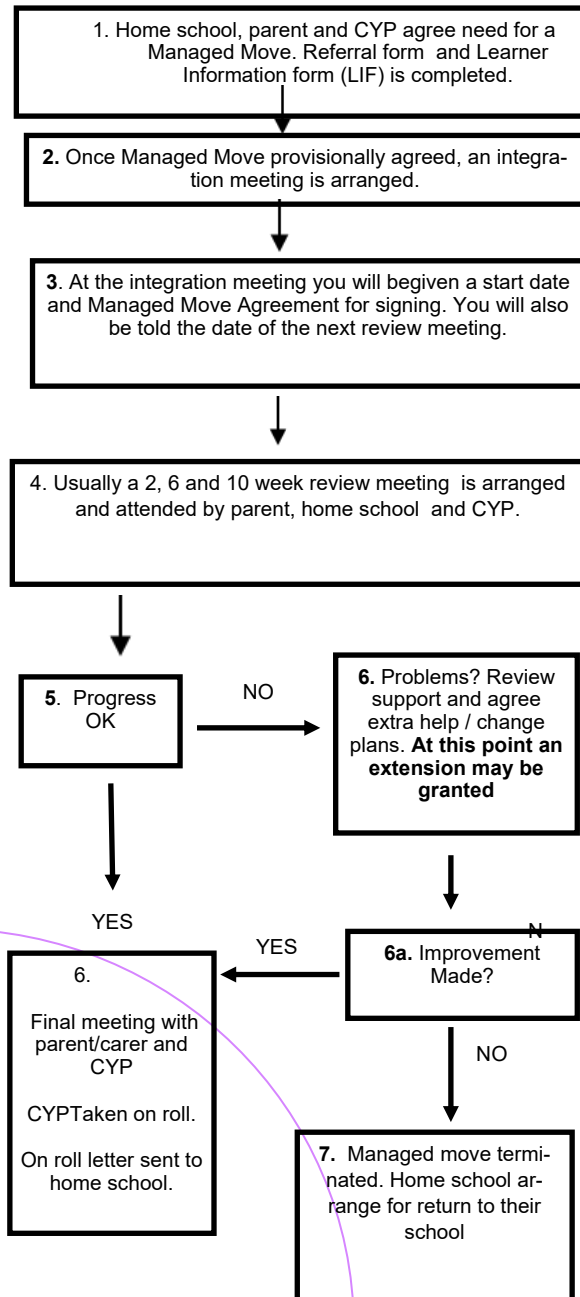
Should there be any issues, either contact the EIP mentor or the receiving school as they arise.

# The Managed Move Process



## Keeping Children Safe in Education

## The Journey to a Successful Managed Move



## Safeguarding Statement

WCC Family of Schools are committed to keeping every child in education safe. We all adhere to the 'Keeping Children Safe in Education' guidance (July 15) and to Warwickshire's local safe guarding guidance. All safe guarding guidance and policies are easily accessible on schools websites.



## Keeping Children Safe in Education

## Key Contacts

Managed Move Lead : .....

Form Tutor: .....

School / Academy telephone number:

Start of school day:

**Absences: If your child is going to be absent then please contact the attendance office before 8.30am on the first day of absence.**

**Key Dates:**

**Good Luck!!!**