

INTRODUCTION

What is a Managed Move?

At WCC we recognise that at times a fresh start is needed. A 'Managed Move' is an agreement between the child/ young person (CYP), their parent/ carer, the Head Teacher at the referring school and the Head at the receiving school.

The managed transfer from one school to another is a behaviour management strategy used when the current school have exhausted all other strategies. It is a voluntary agreement with a child-centred approach.

Managed moves provide real opportunities for personal learning and change. They can help break the cycle some children find themselves in.

Partnership working between the referring school, new school, the CYP, yourself (the parent /carer) and any other professional agency will support the transition and improve the quality of the move.

A member of the Significant Adult provision will be allocated to support the move, they will offer support to parent/carer and the child to ensure they get the best chance to make the most of their new school. We know smooth transitions are imperative to build success therefore our promise is to work together collaboratively to achieve this.

How Managed Moves can be successful

Good communication is important in supporting the success of a managed move. Early intervention/ action can reduce incidents

Be positive and if there are any issues contact your Significant Adult or new school to discuss.

Further information

Further information can be found at <https://schools.warwickshire.gov.uk/early-help-targeted-support/alternative-provision>

You will be given information about the bus routes. Please make sure that your child gets up early enough to catch the bus (if applicable).

Please visit www.traveline.co.uk to find out what bus is appropriate for you.

If needed, it might be helpful to practice the journey to and from the school so that they feel confident on their first day.

Preparing things the night before can reduce stresses in the mornings, e.g. school bag, homework, PE kit etc.

You will be given a copy of the school's expectations. Read them through with your child. Knowing the school's expectations will help your child to be more comfortable.

Ensure your child familiarises themselves with their new school timetable.

Ensure you read all other documentation provided.

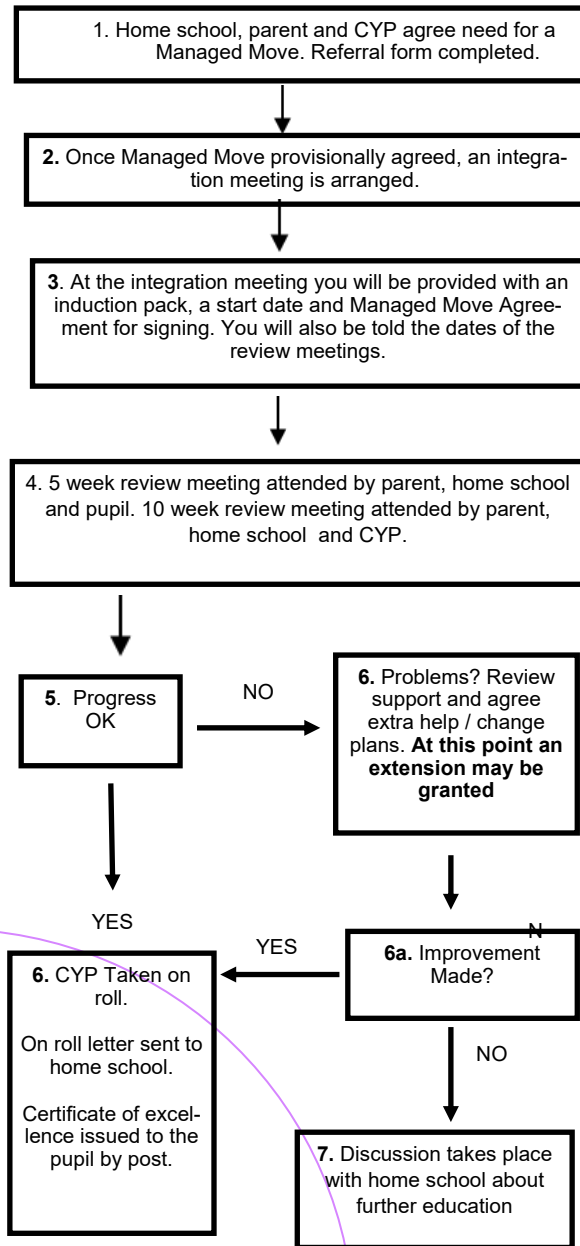
The key is – early intervention

The Managed Move Process



Keeping Children Safe in Education

The Journey to a Successful Managed Move



Safeguarding Statement

WCC Family of Schools are committed to keeping every child in education safe. We all adhere to the 'Keeping Children Safe in Education' guidance (July 15) and to Warwickshire's local safe guarding guidance. All safe guarding guidance and policies are easily accessible on schools websites.



Keeping Children Safe in Education

Key Contacts

Managed Move Lead :

Form Tutor:

School / Academy telephone number:

Start of school day:

Absences: If your child is going to be absent then please contact the attendance office before 8.30am on the first day of absence.

Key Dates:

Good Luck!!!