



Warwickshire North
Clinical Commissioning Group



Test and Trace

Liann Brookes-Smith

Associate Director Public Health

How to get tested?

You book at test at <https://www.gov.uk/get-coronavirus-test> or call 119.

How do you want to get the coronavirus test?

Based on your answers, these testing services are available to you.



At a drive-through test site

- you need to book your test as soon as possible
- you or someone you live with must drive to the test site by car or small van
- site staff will tell you if an assistant does the swab test for you or if you do it yourself



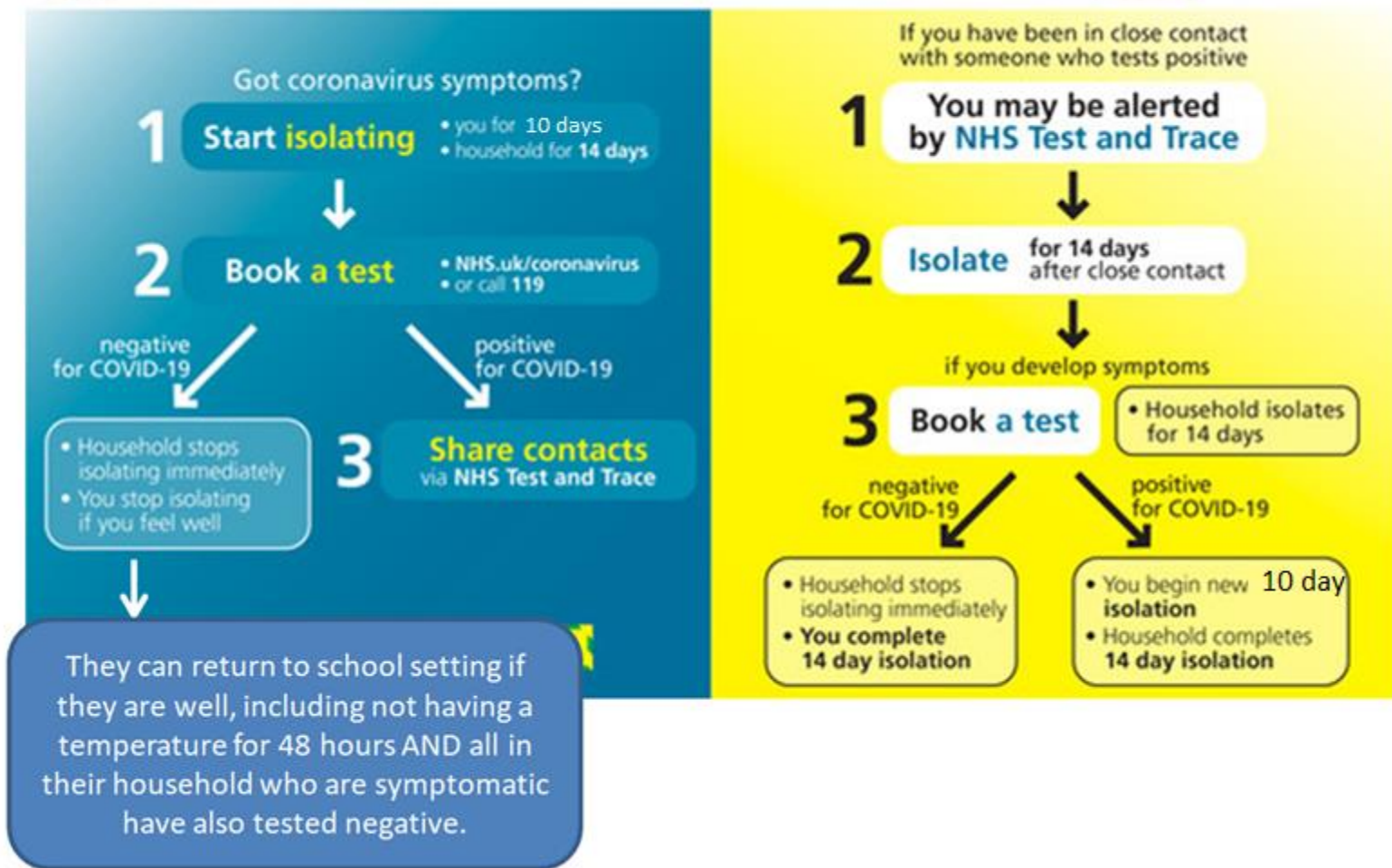
At a walk-through test site

- you need to book your test slot as soon as possible
- you can walk or cycle to the site (do not go by public transport or taxi)
- site staff will tell you if an assistant does the swab for you, or if you do it yourself



Home testing

- you can get a test kit for yourself and up to 3 other people you live with
- it is posted to your home and should arrive the day after you order it
- it's important that you return your test as soon as possible after doing it



What is an outbreak and what do I do?

- If there are 2 people with symptoms or 2 confirmed cases in the school (e.g. two children or one child and one teacher, or two teachers etc.), whether they are from the same bubble or separate bubbles - that is by definition an outbreak. The outbreak needs to be notified at the point the individuals become unwell – you should not wait for test results.
- Please report **outbreaks** as soon as possible to the **Health Protection Team** in Public Health England using the online reporting system available here: <https://surveys.phe.org.uk/TakeSurvey.aspx?SurveyID=n4KL97m2l>
- Or by telephone to **0344 225 3560 (opt 0 opt 2)**

What should a school do and when?

**Child or teacher develops symptoms
Remain/sent home**

Household isolates

If more than one child/teacher away from school with COVID-19 symptoms Contact DPHdmin@warwickshire.gov.uk

***ALL to inform the school of results**

Book
Test*

**Can return to setting/school after 10 days, if well and 48hr after temp resolves – however dependent on staff availability if they can return.

Tested positive**

Contact PHE and
DPHdmin@warwickshire.gov.uk

Household continues to isolate for 14 days

Tested Negative

Household stops isolating

Returns to school after well and 48 hrs after high temp resolves and if no one in household has symptoms

Close Contacts/ Bubble is sent home to self isolate for 14 days

Send home with a letter informing them of start/end date and what to do

Household isolates

Close contact Develops symptoms

Book*
test

Tested positive* *

Contact PHE and
DPHdmin@warwickshire.gov.uk

Household continues to isolate

Tested negative – will still isolate for 14 days due to being close contact of case

Household stops isolating