



WARWICKSHIRE COUNTY COUNCIL

ECOLOGY, HISTORIC ENVIRONMENT & LANDSCAPE (EHEL)

TEAM ROLE:

To promote, protect and enhance Warwickshire's urban and rural Landscapes and their Natural and Historic Environment assets.

HOW WE DO IT:

"Good Data with Good Interpretation makes for Good Decision-making"

Records: We manage and maintain data and information within the Warwickshire Biological Record Centre, the Warwickshire and Solihull Historic Environment Records and the Warwickshire Landscape Characterisation project. We use these records to advance our understanding of Warwickshire's past, present and future. For example, we model theories from species movements to strategic areas for habitat creation; define search areas for archaeological assets; and define historic and future landscapes. The Council, as a 'responsible authority', is also instructed by the Secretary of State to prepare a Local Nature Recovery Strategy (LNRS).



2024 Recruitment:

We are looking for an Assistant Historic Environment Officer to work predominantly in the Records Team to help manage and maintain records within the Warwickshire and Solihull Historic Environment Records and help support the delivery of several HER projects including the NRHE to HERs project and the Forestry SHINE Enhancement Project. Candidates who have an understanding and experience of HERs will be looked upon favourably for this role. This role will also help with Planning (see below).

Projects: We work with the County's Highways, Design Services, Flood and Property services teams to act as consultants embedding biodiversity net gain into Local Authority led projects, large or small. A recent example being the strategically important A46 Stoneleigh junction improvement scheme. We also partner with external non-governmental organisations with a recent example being working with Sustrans on the opening of the 'Lias Line Greenway', a disused railway line, for both cycles and pedestrians. We provide advice through ecological impact assessments, design, legal compliance at all stages of the project from conception into construction and then operational and maintenance.



Planning and Advice: We advise planning officers and landowners, members of the public and government in enabling sustainable development in a legal manner through industry best practice. This advice is based on our records, knowledge and expertise. Within planning our roles are to advise on strategic plans and their policies and thereafter advise to enable applications to adhere to these policies through our Service Level Agreements with our County, District and Borough Planning Authority partners across Warwickshire.



**Planning Authority
of the Year**

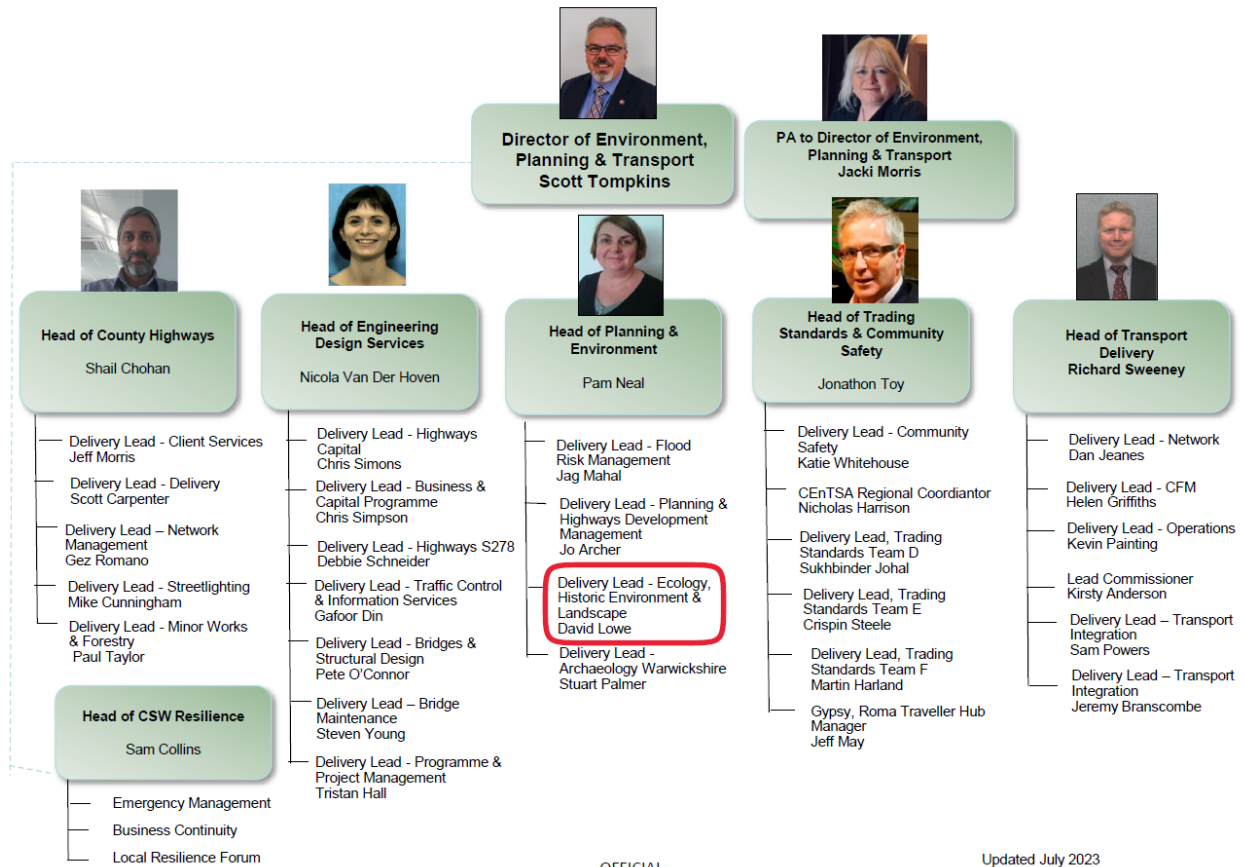
We are looking for an Assistant Historic Environment Officer to work partly in the Planning Team and Records Team (see above) to assist with archaeological planning advice. Candidates who understand the planning system will be looked upon favourably for this role.

Natural Capital: as national leads in this emerging sector, Warwickshire County Council piloted, established and delivers the only fully functional Biodiversity Net Gain market in the country. We have built on this national success by researching the viability of how other ecosystem service markets, such as carbon, air quality, nutrient balancing and social prescribing can be established within consenting regimes and embedded into strategies and their policies. We have also been tasked to co-ordinate the planting of 566,000 trees for climate change. The aim is to deliver this through Natural Capital Investment and thereby making a financial return to fund other climate change and biodiversity initiatives. How the Council will manage these funds will be contained in the WCC Natural Capital Investment Strategy.



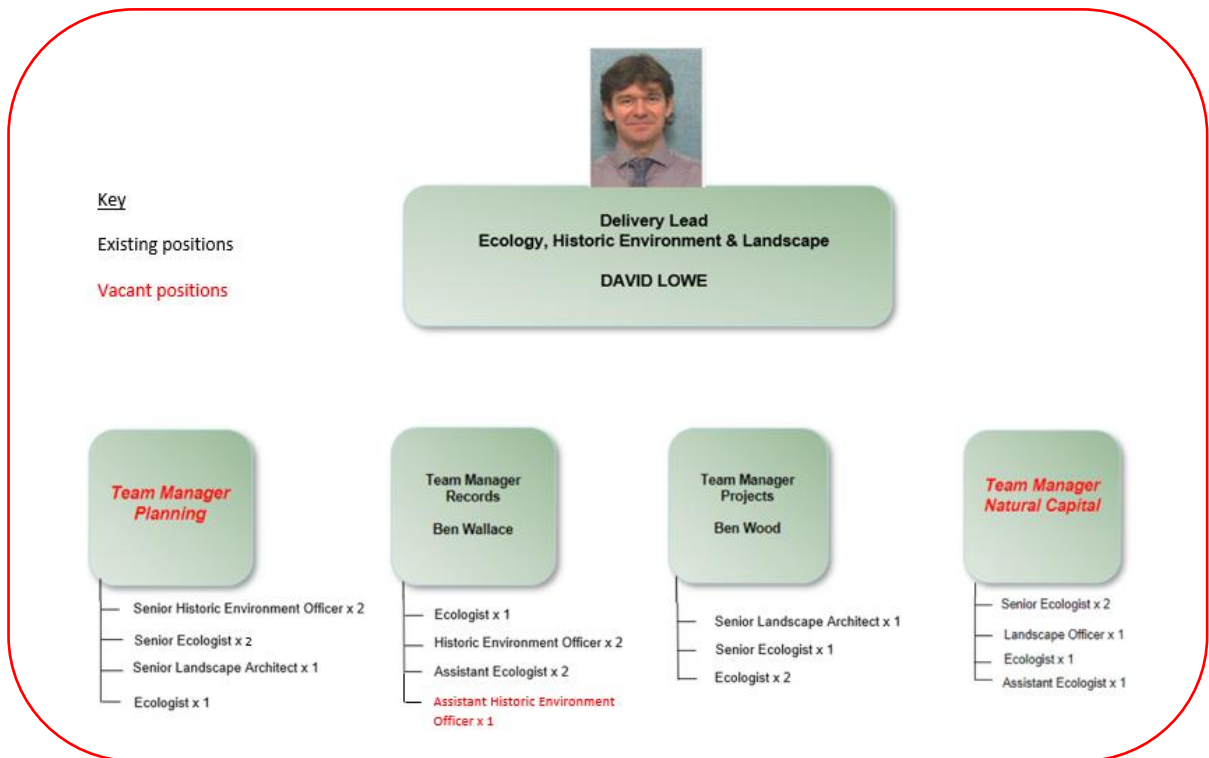
ORGANISATIONAL CHART:

Warwickshire County Council – Communities Directorate – Environment, Planning & Transport



OFFICIAL

Updated July 2023



OFFICIAL