

Council tax and spending explained 2022/2023





A message from Cllr Izzi Seccombe

Leader, Warwickshire County Council



Dear resident

I am pleased once again to have this opportunity to introduce Warwickshire County Council's council tax leaflet for 2022/23.

As usual, we set out details of how the County Council spends the money available to us as we work to make Warwickshire the very best it can be for everyone.

In February 2022, Warwickshire County Council agreed a total increase of 1.75% in council tax with a further 2% adult social care precept. Council agreed not to set the maximum increase, being mindful of cost-of-living pressures. In setting our council tax we must balance the increasing costs for the County Council with the ability of residents to afford the increase which is equivalent to an increase of £1.10p per week for a Band D dwelling.

We have set a robust, ambitious and sustainable financial strategy to guide us through the next five years. It will enable us to deal with major financial and demand challenges; provide us with sufficient capacity to invest to be more efficient and effective, as well as flexibility to be able to respond to ever changing economic and political challenges. We have also set out £171 million of permanent investments which will support some of our most vulnerable residents.

Alongside our new five-year financial strategy, we have launched a refreshed Council Plan that is all about Warwickshire stepping forward. Stepping forward to meet challenges, stepping forward to embrace opportunity and stepping forward to deliver our ambition for Warwickshire.

In our plan we focus on three strategic priorities: to create a thriving economy with vibrant places; enable people to live healthy and happy lives; and to create sustainable futures for our people, reflecting the importance of taking concerted action on climate change.

The Plan has at its core a commitment to empowering communities. Throughout the pandemic we have seen how people have stepped forward to support one another, to build and extend support networks. We want to maintain and build on that momentum putting community spirit at the heart of all of our work.

The County Council will continue to prioritise regeneration activity where there is lower economic growth and higher unemployment. You will see more opportunities that help people fulfil their potential in life, and a focus on developing and improving the areas of our county that need it most.

We will promote financial and digital inclusion, targeting help to those most economically vulnerable. We will work with partners to improve educational attainment, particularly focusing on areas of the County where performance is lower.

We will create opportunities for people with special educational needs and disabilities, particularly those with autistic spectrum disorder, to progress to sustainable employment. We will address health inequalities and target action towards areas with the highest gaps in life expectancy and poorest health outcomes.

Our County performs strongly across the board, but there are longstanding differences to address. We will therefore embed the long-term work to address these inequalities and spread aspiration and opportunity across our communities of place and communities of interest.

The past two years have been tough for us all. COVID-19 has affected us in so many ways and the recovery process is ongoing, but we hope we can start to move forward together with our residents, our communities, our businesses and work together to build a happy, healthy and sustainable future.

Where the money comes from

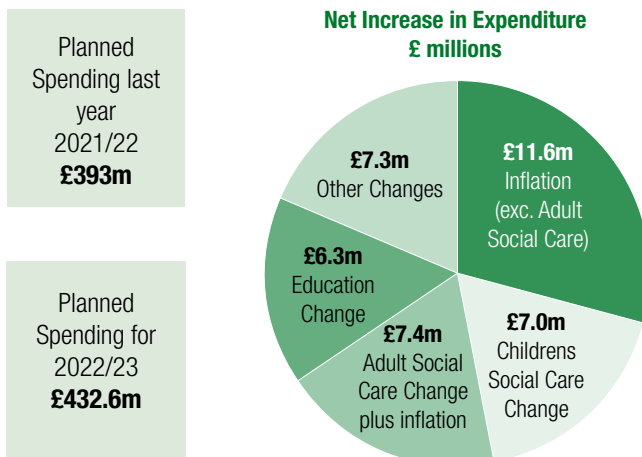
In 2022/23, our total day-to-day spending on services (before we receive any income) is £743.7 million. We are spending £39.6 million more than last year, when we budgeted to spend £704.1 million.

The money we spend comes from central government and local income.

The table below shows our current funding.

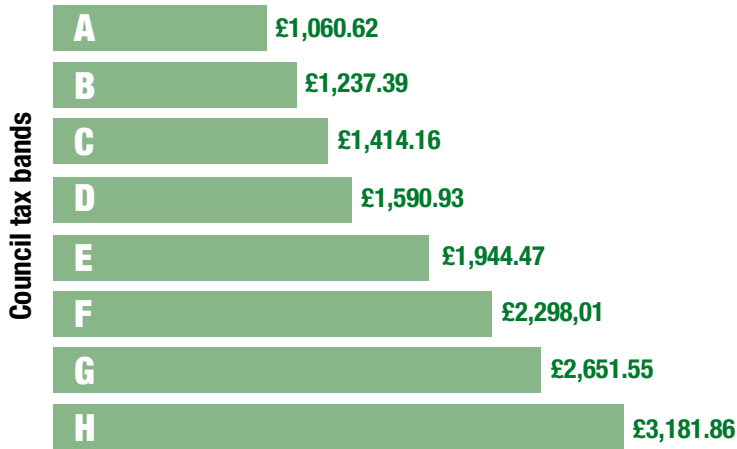
	2022/23 £m	Change £m	2021/22 £m
Central government			
Specific government grants	202.3	22.4	179.9
Business rates	73.6	5.9	67.7
Local income			
Council tax	343.1	19.4	323.7
Extra(+)/Deficit(-) Council tax collected from previous years	2.8	4.3	-1.4
Other Contributions, fees and charges	107.8	-23.4	131.2
Use of reserves	14.0	11.0	3.0
Total service costs	743.7	39.6	704.1

How our spending has changed



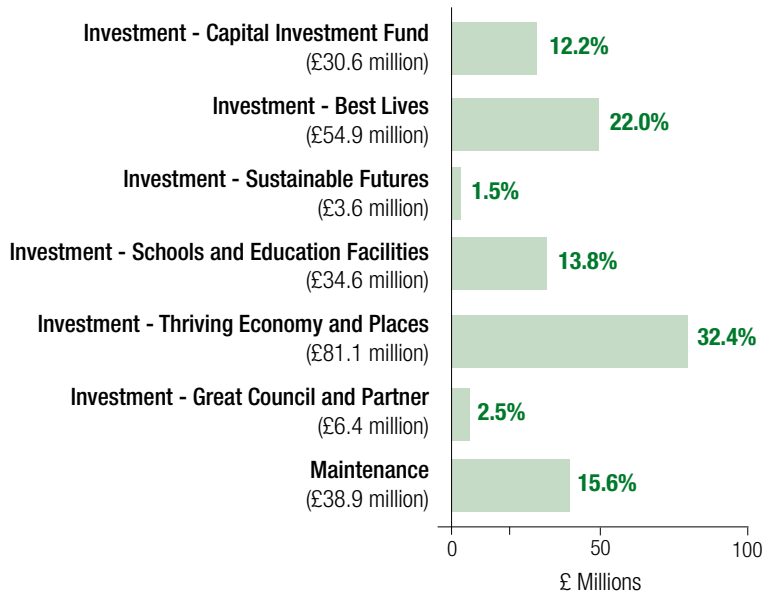
Council tax 2022/23

The chart below shows our council tax for properties in each valuation band.



Capital spending

Apart from our day-to-day costs, we also spend money on land, buildings, new roads, major maintenance work and vehicles. The chart below shows our planned capital spending of £250.1 million in 2022/23.



How the money is spent

	2021/22 Spending after income £ millions	2022/23 Spending before income £ millions	2022/23 Income £ millions	2022/23 Spending after income £ millions	2022/23 Value for each resident £
Communities Directorate					
Education Services	39.8	156.4	-109.3	47.1	80.8
Environment Services	25.8	38.0	-12.8	25.2	43.1
Fire & Rescue	21.9	23.2	-0.6	22.6	38.7
Strategic Commissioner for Communities	22.6	41.9	-17.8	24.1	41.3
People Directorate					
Adult Social Care	132.9	216.4	-77.5	138.9	238.0
Children & Families	68.3	90.9	-13.9	77.0	131.8
People Strategy and Commissioning	11.1	41.7	-30.9	10.8	18.4
Resources Directorate					
Business & Customer Services	17.9	20.5	-2.4	18.1	31.0
Commissioning Support Unit	6.1	6.1	-0.6	5.5	9.3
Enabling Services	24.4	29.4	-4.0	25.4	43.6
Finance	5.5	8.4	-2.9	5.5	9.5
Governance & Policy	1.6	6.3	-3.4	2.9	5.0
Other Services	15.2	64.5	-34.0	30.5	52.3
Service costs	392.9	743.7	-310.1	433.6	718.7
Money taken from (-) or put into our savings	-3.0	-14.0		-14.0	-24.0
Our budget	389.9	729.7	-310.1	419.6	718.7
Less money from the Government					
Business rates	-67.7			-73.6	-126.1
Extra (-) / Deficit (+) Council tax collection from previous years	1.4			-2.8	-4.8
Amount we will raise from the council tax (£ million)	323.7			343.1	587.8
Tax base	211,067.0			215,689.5	
Band - D council tax (£)	£1,533.51			£1,590.93	

Notes:

Figures may not sum precisely due to rounding.

The Council passes on funds received from the Department for Education to schools as part of the Dedicated Schools Grant. These figures have been excluded as they do not affect the Council's resources.

'Other services' includes financing, banking and managing money and insurance.

The Office for National Statistics estimates that in 2022/23, 583,786 people will be living in Warwickshire.

The Secretary of State made an offer to adult social care authorities. (“Adult social care authorities” are local authorities which have functions under Part 1 of the Care Act 2014, namely county councils in England, district councils for an area in England for which there is no county council, London borough councils, the Common Council of the City of London and the Council of the Isles of Scilly.)

The offer was the option of an adult social care authority being able to charge an additional “precept” on its council tax without holding a referendum, to assist the authority in meeting its expenditure on adult social care from the financial year 2016-17. It was originally made in respect of the financial years up to and including 2019-20. If the Secretary of State chooses to renew this offer in respect of a particular financial year, this is subject to the approval of the House of Commons.

The Council has decided to levy an additional 2% Council Tax to contribute to the funding of the additional costs facing adult social care, as allowed by the government.

The additional 2% Adult Social Care levy in 2022/23 including the amount raised by the levy in 2016/17, 2017/18, 2018/19, 2019/20, 2020/21 and 2021/22, will raise £37.304 million in 2022/23.

These funds will be used to help the Service with much needed flexibility to manage its resources in the most effective way. The service will focus on the transformation of adult social care pathways, the way we deploy social workers and the enhancement of information and advice to enable people to shape their own solutions.

Useful telephone numbers and websites

If you have any complaints, comments or suggestions about our services please contact our customer service centre on **01926 410410**.

We provide a wide range of services on our website. For example, you can renew library books, check bus timetables, apply to be a foster parent and apply for copies of birth, marriage or death certificates.

For more information, go to **www.warwickshire.gov.uk**

Your local borough or district council collects your council tax. They will be able to help you if you have any questions about your bill or about whether you are entitled to Council Tax Support.

Warwickshire County Contact: **Assistant Director - Finance**

Telephone: **01926 412441**

This leaflet contains important information.

If you would like information in another language or format please call **01926 415000**