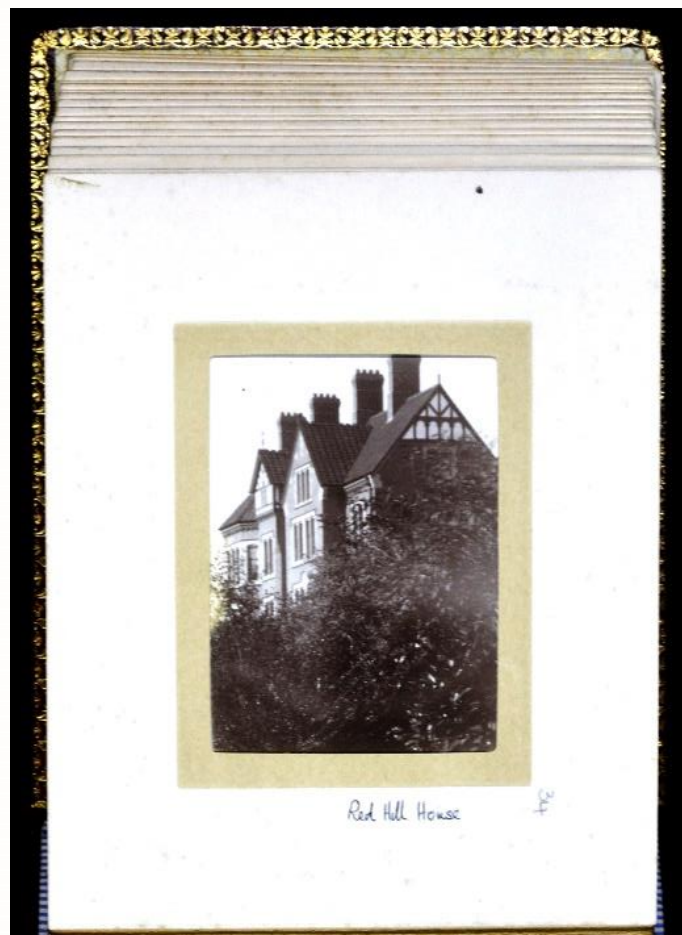


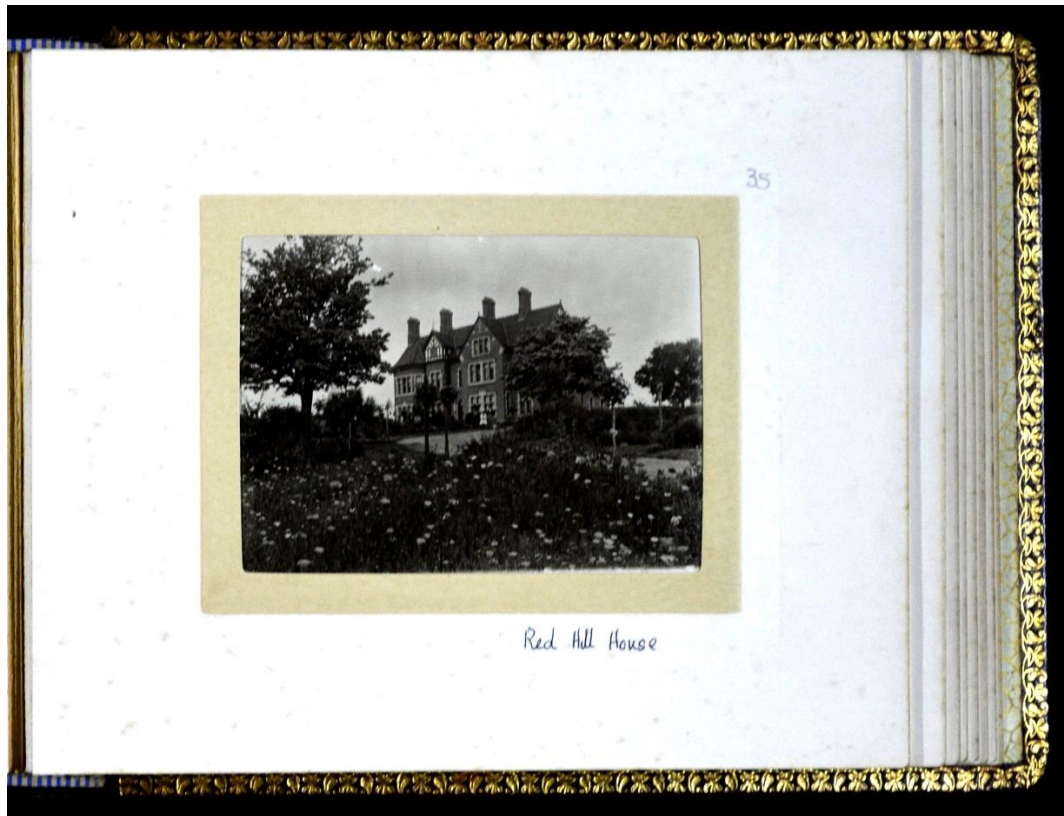
Photograph album by William Archibald Pippet

(CR2199/6)

For the first Document of the Month for 2024, we have chosen a photograph album dated 1901 and created by Reverend William Archibald Pippet, rector and photographer at Clifford Chambers, near Stratford upon Avon. The album comes from the collection CR2199 which also includes photographic slides, notebooks and a visitors' book detailing the village of Clifford Chambers, its inhabitants and the surrounding area. On display are two pages from the album which feature two black and white photographs of Red Hill House, the home of Reverend Pippet and his family, taken in 1900 and 1901.



Images 34 from the photograph album of William Archibald Pippet, Warwickshire
County Record Office, CR2199/6



Images 35 from the photograph album of William Archibald Pippet, Warwickshire
County Record Office, CR2199/6

The red, patent leather album has a delicate, golden flower and leaf design around the inside edge and each page of the album has a golden, gilded edge. Contained within are 48 unmounted black and white photographs, each measuring around 3.7" x 2.7". On the front, inside cover is an inscription, written and signed by W. A. Pippet to his wife Mary on her birthday. It is dated 17th August 1901 and reads:

'In memory of the day,

Thou first the light didn't see,

Returning yearly:

May it happy be:

My love to thee,

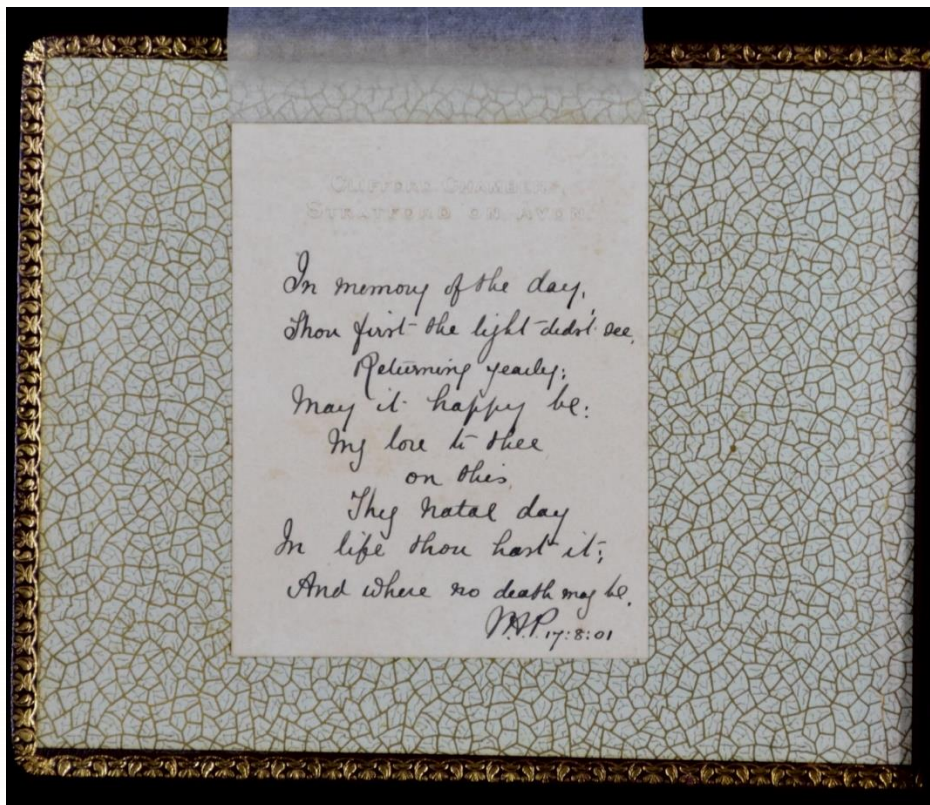
On this,

Thy natal day

In life thou hast it;

And where no death may be.

W.A.P 17.8.01¹



Handwritten inscription, taken from the photograph album of William Archibald Pippet, Warwickshire County Record Office, CR2199/6

¹ Photograph Album by William Archibald Pippet, Warwickshire County Record Office CR2199/6

Red Hill House

William Archibald Pippet was born in January 1853 in Barnard Castle in County Durham². He was ordained a priest in 1880 and held several curacies before being appointed rector of Clifford Chambers in 1895³. He moved with his wife Mary Anne, who he married in 1891, and his daughter Monica Mary, born in 1892⁴, to the village where he started work building Red Hill House, his intended rectory and family home. The two photographs on display at the Record Office show two different angles of the finished house. Photograph no. 34 was taken in 1900 and shows the front and side of the house from the view of the garden. Photograph no. 35, taken in June 1901, shows the front of the house taken from the garden. In the foreground you can see summer wildflowers blooming and standing on the lawn, to the centre of the photograph, are Mary and Monica. Reverend Pippet remained at Red Hill House after his retirement in 1918 until his death in 1930, aged 77.

Following the death of Mary Pippet in 1946, Red Hill House was put up for sale by auction. The Warwick Advertiser details the sale and provides further information about the house that Reverend Pippet built. It is described as having a 'delightfully elevated position', 'entrance and inner halls, four reception rooms', 'twelve bed and dressing rooms, bathroom, cellars, two staircases' and a 'good garage with a stable'⁵. It also notes the grounds surrounding the house, including multiple gardens and a paddock of one acre.

Clifford Chambers

Situated two miles south of Stratford upon Avon, the village of Clifford Chambers became part of the county of Warwickshire following a boundary change in 1931. Photographs within Reverend Pippet's album give us a glimpse of rural life in the village during the early 20th century. It includes photographs of villagers, for example children dressed for May Day celebrations and a farmer driving a horse-drawn wagon, as well as swans on the river Stour and sheep waiting to be washed in a farmyard. Several prominent buildings are captured such as Clifford Manor House,

² Bissel, D. (2004). *The photographic slides of The Reverend W A Pippet*, p.5

³ 'The passing of the Rev. W.A.Pippet', *Stratford Herald and South Warwickshire Advertiser*, 21 March 1930, found via the British Newspaper Archive:

<https://britishnewspaperarchive.co.uk/viewer/bl/0004779/19300321/007/0001> (accessed 9th December 2023)

⁴ Bissel, D. (2004). *The photographic slides of The Reverend W A Pippet*, p.8

⁵ 'Sales by Auction' *Warwick and Warwickshire Advertiser*, 28 June 1946, found via the British Newspaper Archive: <https://britishnewspaperarchive.co.uk/viewer/bl/0001658/19460628/011/0002> (accessed 9th December 2023).

Manor Mill and the New Inn, plus several farm buildings and villagers' cottages and the village square. St Helen's Church also features heavily in the album with external photographs of the church and graveyard and interior prints of the east window, a heptagonal font, a chalice and the Rainsford, wall-mounted memorial. Hoskings, in *Round the Square & up the Tower Clifford Chambers Warwickshire*, believes the photographs to be 'enchanted' and 'special' because they are of a place that has outwardly changed so little⁶.

More information can be found on Reverend Pippet and the photographs he took of Clifford Chambers in the book *The photographic slides of The Reverend W A Pippet* by David Bissell (2004) which is available in the Record Office Library (reference B.CLI.BIS (P)).

⁶ Hosking, S. (2013) *Round the Square & up the Tower Clifford Chambers, Warwickshire*, p.34