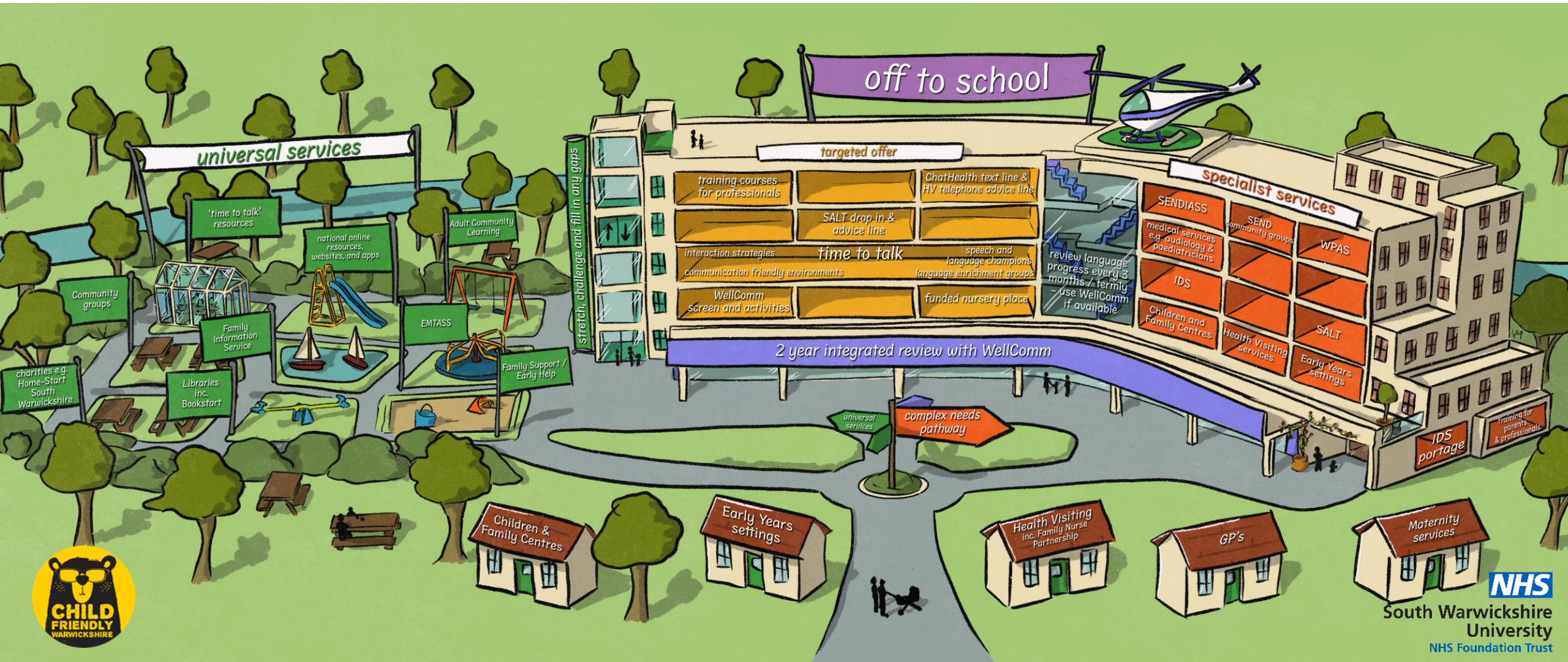


# Warwickshire's Speech, Language and Communication Pathway for Early Years

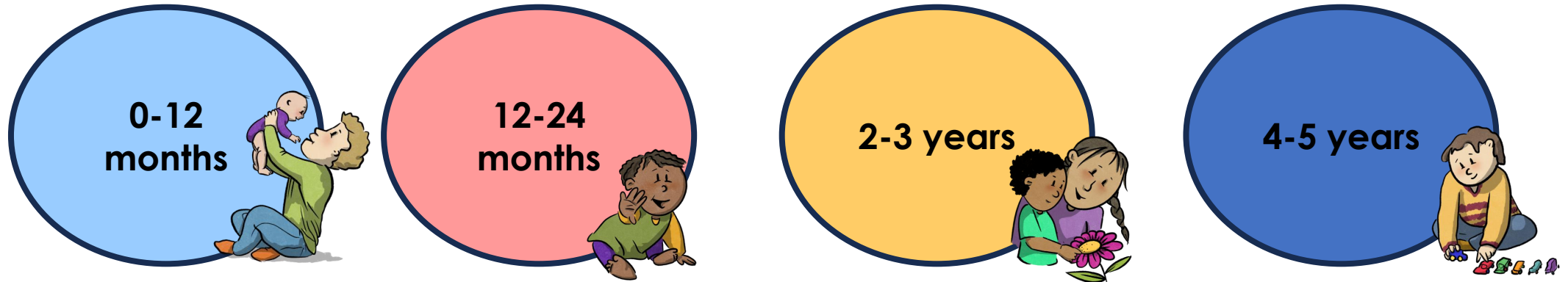


Click on the picture to get started.



# Warwickshire's Speech, Language and Communication Pathway for Early Years

Click on the shapes to move through the pathway and find out what support is available for the families and children you meet.



Digital Resources for all ages 

Training Options 

Glossary 

0-12  
months

[back](#)



# Warwickshire's Speech, Language and Communication Pathway for Early Years

The child I know is communicating at the level expected for their age

The child I know may have some delay in their communication level and may need some targeted support

The child I know may have a significant level of communication difficulty and may need specialist support

[Return to menu](#)

# Warwickshire's Speech, Language and Communication Pathway for Early Years

12-24  
months

[back](#)



The child I know is communicating at the level expected for their age

The child I know may have some delay in their communication level and may need some targeted support

The child I know may have a significant level of communication difficulty and may need specialist support

[Return to menu](#)

2-3 years

back

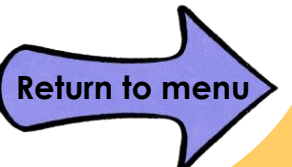


# Warwickshire's Speech, Language and Communication Pathway for Early Years

The child I know is communicating at the level expected for their age

The child I know may have some delay in their communication level and may need some targeted support

The child I know may have a significant level of communication difficulty and may need specialist support



# Warwickshire's Speech, Language and Communication Pathway for Early Years

4-5 years

back



The child I know is communicating at the level expected for their age

The child I know may have some delay in their communication level and may need some targeted support

The child I know may have a significant level of communication difficulty and may need specialist support

[Return to menu](#)

[back](#)

## Digital Resources

These resources have content that can support all families to develop their child's Speech, Language and Communication

# Warwickshire's Speech, Language and Communication Pathway for Early Years



## Warwickshire County Council

- [Family Information Service newsletter & website](#)
- [Warwickshire's Local Offer](#)
- [Child Friendly Warwickshire](#)
- [Search Out Warwickshire](#)
- [50 Things to do before you're 5](#)
- [Early Years Briefing](#)
- [Book Loan Schemes](#)



## 'time to talk'<sup>TM</sup>

- [Website for parents and professionals](#)
- [Leaflets/posters](#)



## SWFT NHS & WCFW resources

- [SWFT Speech and Language Therapy website](#) for parents and professionals
- [WCFW website](#) (Health Visiting)
- [ChatHealth text line](#) (Health Visiting)



## Social Media accounts:

Facebook:

- @warwickshireslt
- @warwickshiretometotalk
- @wccearlyyears
- @50thingswarwickshire
- @WarwickshireFIS
- @childfriendlywarwickshire

Instagram:

- @warwickshireslt
- @timetotalk\_warwickshire
- @childfriendlywarks
- @warwickshire\_libraries



## National Resources

- [Best Start in Life](#)
- [BBC Tiny Happy People](#)
- [Speech and Language UK](#)
- [National Literacy Trust – Words for Life](#)
- [NSPCC – Look Say Sing Play](#)

Disclaimer: This tool has been designed for professionals to use when supporting families in Warwickshire. Information is constantly changing so if you find a mistake, please let us know. Warwickshire County Council and SWFT are not responsible for external content, and you must use your professional judgement before sharing these with families.

[Return to menu](#)

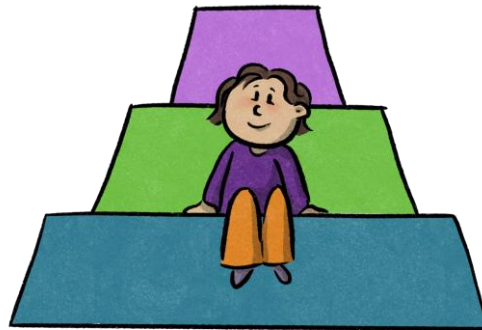
## Training Options

[back](#)

# Warwickshire's Speech, Language and Communication Pathway for Early Years

Courses for **parents, carers** and **families**

Courses for **professionals** working with young children in Warwickshire



[Return to menu](#)

## Training Options

[back](#)

# Warwickshire's Speech, Language and Communication Pathway for Early Years

## Courses for **parents, carers and families**

**Makaton training** – all levels through SWFT Speech and Language Therapy. [Email here](#)

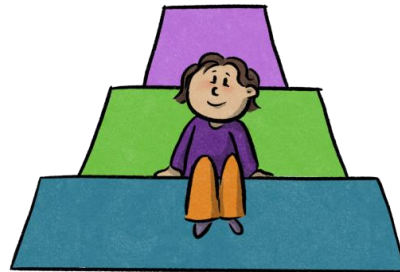
[Parenting courses](#) **Warwickshire County Council**

[Adult and Community Learning](#) **Warwickshire County Council**

[Parent/Carer Speech and Language Information Sessions](#) **Children and Family Centres**

[Toolboxes for parents, carer and families of autistic children:](#) **Community Autism Support Service**

[Parent Webinars](#) **Speech and Language UK**



This list is not exhaustive. Please let us know if you become aware of additional courses available: [timetotalk@swft.nhs.uk](mailto:timetotalk@swft.nhs.uk)

Disclaimer: This tool has been designed for professionals to use when supporting families in Warwickshire. Information is constantly changing so if you find a mistake, please let us know. Warwickshire County Council and SWFT are not responsible for external content, and you must use your professional judgement before sharing these with families.

[Return to menu](#)

## Training Options

[back](#)

# Warwickshire's Speech, Language and Communication Pathway for Early Years

Courses for **professionals** working with young children in Warwickshire

**'time to talk'**™ [Tiered training](#), ['chatter matters' training](#), [bitesize training](#) for Early Years practitioners

**Makaton** training – all levels through Speech and Language Therapy. [Email here](#)

**EMTASS** – EAL Network Meetings & EAL matters in the Early Years training. [Email here](#)

**ACL (Family Learning)** - Raising Early Achievement in Literacy (REAL) Practitioner training

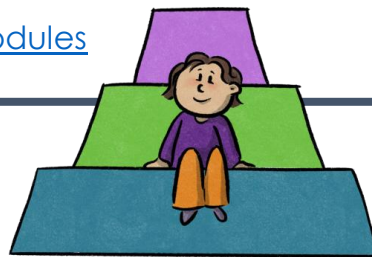
**WCC Early Years Inclusion & SEND Service** - SENCO surgeries & training courses. [Email here](#)

**WCC Early Years Quality, Standards and Safeguarding** [Email here](#)

**Community Autism Support Service** [webinars](#)

**HEART** – Midlands Early Years [Stronger Practice Hub](#)

**Department for Education** [Childcare modules](#)



This list is not exhaustive. Please let us know if you become aware of additional courses available: [timetotalk@swft.nhs.uk](mailto:timetotalk@swft.nhs.uk)

Disclaimer: This tool has been designed for professionals to use when supporting families in Warwickshire. Information is constantly changing so if you find a mistake, please let us know. Warwickshire County Council and SWFT are not responsible for external content, and you must use your professional judgement before sharing these with families.



## Glossary



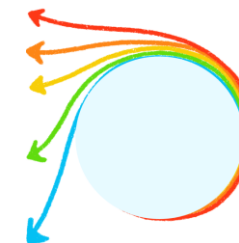
[back](#)

**2Help** – 2 year early years funding for eligible families  
**ACL** – **A**dult and **C**ommunity **L**earning  
**EAL** – **E**nglish as an **A**dditional **L**anguage  
**EMTAS** – **E**thnic **M**inority and **T**raveller **A**chievement **S**ervice  
**EYFS** – **E**arly **Y**ears **F**oundation **S**tage Curriculum  
**EYIS** – **E**arly **Y**ears **I**nclusion and **S**END  
**FIS** – **F**amily **I**nformation **S**ervice  
**NHS** – **N**ational **H**ealth **S**ervice  
**SEN/D** – **S**pecial **E**ducational **N**eeds and **D**isabilities  
**SENCO** – **S**pecial **E**ducational **N**eeds **C**o-ordinator  
**SENDIASS** – **S**pecial **E**ducational **N**eeds and **D**isabilities  
Information and **A**dvice **S**upport **S**ervice  
**SLC** – **S**peech, **L**anguage and **C**ommunication  
**SLT/SALT** – **S**peech and **L**anguage **T**herapy  
**SOGs** – **S**chedule **O**f **G**rowing **S**kills assessment  
**WCC** – **W**arwickshire **C**ounty **C**ouncil  
**WCFW** – **W**arwickshire **C**hild and **F**amily **W**ellbeing **S**ervice

# Warwickshire's Speech, Language and Communication Pathway for Early Years

## Our Vision

Many of the professions and teams represented, came together to create a joint vision for Warwickshire's SLC pathway. If you'd like to read it, click on this box and it will open in a new tab.



Images created for Warwickshire 'time to talk'™ by Alice Goode illustrating as Lythop.Art. Please do not duplicate without permission.



If you have any feedback or suggestions, please contact [timetotalk@swft.nhs.uk](mailto:timetotalk@swft.nhs.uk)

[Return to menu](#)

0-12  
months

back



The child I know is communicating at the level expected for their age

#### Children and Family Centres

- Stay and Play/ 'chatter matters'
- Baby Massage
- Baby Time groups
- Themed Groups (e.g. Dad's groups, singing groups)
- Speech and Language Champions for signposting and advice
- Ages and Stages Leaflets

#### Early Years Settings

- 'time to talk' [training and support](#)
- EYFS provision and [Communication Monitoring Tool](#)
- [Communication Friendly Environments including audit tool](#)
- Quality Adult-Child interaction strategies
- Family support and advice
- [Funded nursery places](#)

#### Warwickshire's Child and Family Wellbeing Service

- Antenatal Contact & New Birth Visit
- 6-8 week check
- 9-12 month development review
- ChatHealth text line
- Health Visitor telephone advice line
- Well Baby Clinics
- Additional support for families who have an area of need or vulnerability.

#### Adult & Community Learning's Family Learning

- Story Explorers: 0-2 years (the REAL project)

#### Libraries

- Parents' collection books
- Pregnancy and Parenting books
- Picture and board books
- Rhyme time
- Sensory toys/areas
- Dual language books
- [Email](#)

#### Maternity Service

- [Support for attachment and bonding](#)
- Breast feeding support
- ['abc' of talking with me book](#) (South)
- ['time to talk' leaflets](#)

#### Children and Families

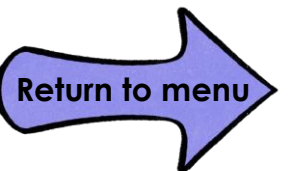
- [Family Information Service](#)
- Family Support Drop-ins
- Family Support [telephone line](#)

#### Charities e.g.

- [HomeStart South Warwickshire](#)
- [Parenting Project](#)
- [Entrust Care Partnership](#)

#### Community Groups

- Local Toddler groups
- Paid groups (e.g. music or movement or swimming sessions)



**0-12  
months**

back



The child I know may have some delay in their communication level and may need some targeted support

#### **Children and Family Centres**

- Speech and Language Champions for signposting and advice
- 'chatter matters' for babies
- WellComm screening and Big Book of Ideas
- 'time to talk' leaflets
- Specific Groups (e.g. Baby Talk, Baby Massage)

#### **Early Years Settings**

- 'time to talk' training and support
- SENCO & Speech and Language Champion monitoring
- WellComm screening and Big Book of Ideas
- 'chatter matters' babies or Language Enrichment groups
- Partnership working with other agencies and signposting

#### **Warwickshire's Child and Family Wellbeing Service**

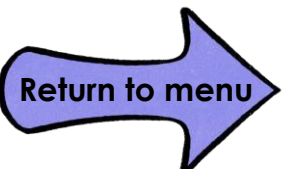
- Antenatal Contact
- New Birth Visit
- 6-8 week check
- 9-12 month development review
- ChatHealth text line
- Health Visitor telephone advice line
- Well Baby Clinics
- Additional support for families who have an area of need or vulnerability.

#### **Adult & Community Learning's Family Learning**

- Story Explorers: 0-2 years (the REAL project)

#### **Speech and Language Therapy**

- ['Let's Talk' Advice line \(text, email or call\)](#)



0-12  
months

back



The child I know may have a significant level of communication difficulty and may need specialist support

#### Children and Family Centres

- SEND Stay and Play groups
- 'chatter matters' for babies
- WellComm screening and Big Book of Ideas

#### Specialist Services

- [Specialist Teachers, Inclusion Mentors, SEND Childcare Coordinators, Child Development Advisors \(including Portage\)](#)
- [Speech and Language Therapy Complex Needs and Dysphagia Service](#)
- [Occupational Therapy and Physiotherapy joint baby clinics](#)
- [Paediatricians](#)
- [Audiology](#)
- Teachers of the Deaf including visual & multi-sensory impairment
- [Little Ears group for deaf children](#)
- Down Syndrome Pathway
- [SENDIASS](#)

#### Early Years Settings

- SENCO & Speech and Language Champion monitoring
- WellComm screening and Big Book of Ideas
- Individual Education Plans
- [Warwickshire Inclusion Kitemarking Scheme \(WinKS\)](#)
- [Partnership working with other agencies](#) and signposting

#### SEND community groups

- Independent/parent-led support groups for families of children with SEN

#### Warwickshire's Child and Family Wellbeing Service

- Antenatal Contact
- New Birth Visit
- 6-8 week check
- 9-12 month development review
- ChatHealth text line
- Health Visitor telephone advice line
- Well Baby Clinics
- SACS-R assessment (pilot project)
- Additional support for families who have an area of need or vulnerability, including SEND.

Return to menu

# Warwickshire's Speech, Language and Communication Pathway for Early Years

## Children and Family Centres in Warwickshire: Contact Information

[back](#)

### North Warwickshire

[Timetable](#)  
[Website](#)  
[Email Address](#)  
[Facebook Page](#)

### Nuneaton

[Timetable](#)  
[Website](#)  
[Email Address](#)  
[Facebook Page](#)

### Bedworth St Michael's

[Timetable](#)  
[Website](#)  
[Email Address](#)  
[Facebook Page](#)

### Rugby

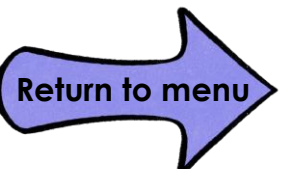
[Timetable](#)  
[Website](#)  
[Email Address](#)  
[Facebook Page](#)

### Stratford upon Avon

[Timetable](#)  
[Website](#)  
[Email Address](#)  
[Facebook Page](#)

### Warwick

[Timetable](#)  
[Website](#)  
[Email Address](#)  
[Facebook Page](#)



12-24  
months

back



The child I know is communicating at the level expected for their age

#### Children and Family Centres

- Stay and Play
- Themed Groups (e.g. Dad's groups, singing groups)
- Speech and Language Champions for signposting and advice
- 'time to talk' leaflets

#### Early Years Settings

- 'time to talk' training and support
- EYFS provision and [Communication Monitoring Tool](#)
- [Communication Friendly Environments including audit tool](#)
- Quality Adult-Child interaction strategies
- Family support and advice
- [Funded nursery places](#)

#### Warwickshire's Child and Family Wellbeing Service

- Well Baby Clinics
- ChatHealth text line
- Health Visitor telephone advice line
- Additional support for families who have an area of need or vulnerability.

#### Adult & Community Learning's Family Learning

- Story Explorers: 0-2 years (the REAL project)

#### Libraries

- Parents' collection books
- Picture and board books
- Rhyme time & Story Stomp
- Sensory toys/areas
- Dual language books
- [Email](#)

#### Children and Families

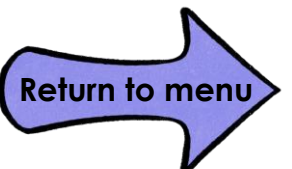
- [Family Information Service](#)
- Family Support Drop-ins
- Family Support [telephone line](#)

#### Community Groups

- Local Toddler groups
- Paid groups (e.g. music or movement or swimming sessions)

#### Charities e.g.

- [HomeStart South Warwickshire](#)
- [Parenting Project](#)
- [Entrust Care Partnership](#)



**12-24  
months**

back



The child I know may have some delay in their communication level and may need some targeted support

**Children and Family Centres**

- Speech and Language Champions for signposting and advice
- 'chatter matters' for babies/ toddlers
- WellComm screening and Big Book of Ideas
- 'time to talk' leaflets
- Specific Groups (e.g. Baby Talk, Baby Massage)
- Book Start Bag

**Early Years Settings**

- 'time to talk' training and support
- SENCO & Speech and Language Champion monitoring
- WellComm screening and Big Book of Ideas
- 'chatter matters' for nurseries or Language Enrichment groups
- Partnership working with other agencies and signposting

**Warwickshire's Child and Family Wellbeing Service**

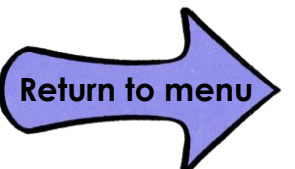
- Well Baby Clinics
- ChatHealth text line
- Health Visitor telephone advice line
- Additional support for families who have an area of need or vulnerability.

**Adult & Community Learning's Family Learning**

- Story Explorers: 0-2 years (the REAL project)

**Speech and Language Therapy**

- ['Let's Talk' Advice line \(text, email or call\)](#)



12-24  
months

back



The child I know may have a significant level of communication difficulty and may need specialist support

#### Children and Family Centres

- SEND Stay and Play groups
- WellComm screening and Big Book of Ideas

#### Specialist Services

- [Specialist Teachers, Inclusion Mentors, SEND Childcare Coordinators, Child Development Advisors \(including Portage\)](#)
- [Speech and Language Therapy Complex Needs and Dysphagia Service](#)
- [Paediatricians](#)
- [Audiology](#)
- Teachers of the Deaf including visual & multi-sensory impairment
- [Little Ears group for deaf children](#)
- Down Syndrome Pathway
- [SENDIASS](#)

#### Early Years Settings

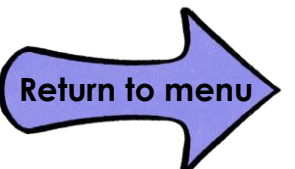
- SENCO & Speech and Language Champion monitoring
- WellComm screening and Big Book of Ideas
- Individual Education Plans
- [Warwickshire Inclusion Kitemarking Scheme \(WinKS\)](#)
- [Partnership working with other agencies](#) and signposting

#### SEND community groups

- Independent/parent-led support groups for families of children with SEN

#### Warwickshire's Child and Family Wellbeing Service

- Well Baby Clinics
- ChatHealth text line
- Health Visitor telephone advice line
- Additional support for families who have an area of need or vulnerability including SEND



2-3 years

[back](#)



The child I know is communicating at the level expected for their age

#### Children and Family Centres

- Stay and Play
- Themed Groups (e.g. Dad's groups, singing groups)
- Speech and Language Champions for signposting and advice
- 'time to talk' leaflets

#### Early Years Settings

- 'time to talk' training and support
- EYFS provision and [Communication Monitoring Tool](#)
- [Communication Friendly Environments including audit tool](#)
- Quality Adult-Child interaction strategies
- Family support and advice
- [Funded nursery places](#)
- 2 Year Development Progress report

#### Warwickshire's Child and Family Wellbeing Service

- Well Baby Clinics
- 27-30 month development check & integrated review
- ChatHealth text line
- Health Visitor telephone advice line
- Additional support for families who have an area of need or vulnerability.

#### Adult & Community Learning's Family Learning

- Story Explorers: 2-5 years (the REAL project)

#### Libraries

- Parents' collection books
- Picture and board books
- Story Stomp
- Sensory toys/areas
- Dual language books
- [Email](#)

#### Children and Families

- [Family Information Service](#)
- Family Support Drop-ins
- Family Support [telephone line](#)

#### Community Groups

- Local Toddler groups
- Paid groups (e.g. music or movement or swimming sessions)

#### Charities e.g.

- [HomeStart South Warwickshire](#)
- [Parenting Project](#)
- [Entrust Care Partnership](#)



2-3 years

back



The child I know may have some delay in their communication level and may need some targeted support

#### Children and Family Centres

- Speech and Language Champions for signposting and advice
- 'chatter matters' for toddlers/preschool
- WellComm screening and Big Book of Ideas
- 'time to talk' leaflets
- Specific Groups (e.g. Toddler Talk)
- Book Start Bag

#### Early Years Settings

- 'time to talk' training and support
- SENCO & Speech and Language Champion monitoring
- WellComm screening and Big Book of Ideas
- Language Enrichment groups e.g. Legro
- Partnership working with other agencies and signposting
- 2Help funding for eligible families including Book Start

#### Warwickshire's Child and Family Wellbeing Service

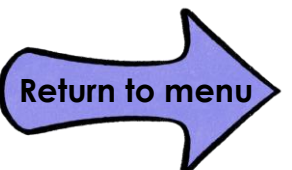
- Well Baby Clinics
- 27-30 month development check & integrated review
- ChatHealth text line
- Health Visitor telephone advice line
- Additional support for families who have an area of need or vulnerability.

#### Adult & Community Learning's Family Learning

- Story Explorers: 2-5 years (the REAL project)

#### Speech and Language Therapy

- ['Let's Talk' Advice line \(text, email or call\)](#)



2-3 years

back



The child I know may have a significant level of communication difficulty and may need specialist support

#### Speech and Language Therapy

- SLT service for specialist level of need including parent-led therapy and direct work with children

#### Early Years Inclusion and SEND Service (EYISS)

- [Specialist Teachers, Inclusion Mentors, SEND Childcare Coordinators, Child Development Advisors \(including Portage\)](#)
- Teachers of the Deaf including visual & multi-sensory impairment
- Training (see training tab)
- SENCO surgeries

#### Early Years Settings

- SENCO & Speech and Language Champion monitoring
- WellComm screening and Big Book of Ideas
- Individual Education Plans
- [Warwickshire Inclusion Kitemarking Scheme \(Wincks\)](#)
- [Partnership working with other agencies](#) and signposting

#### Children and Family Centres

- SEND Stay and Play groups
- WellComm screening and Big Book of Ideas

#### Warwickshire's Child and Family Wellbeing Service

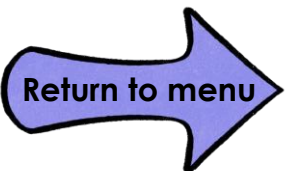
- Well Baby Clinics
- 27-30 month development check & integrated review
- SOGs Assessment
- ChatHealth text line
- Health Visitor telephone advice line
- Additional support for families who have an area of need or vulnerability including SEND

#### Specialist Services

- Warwickshire Preschool Autism Service
- Down Syndrome Pathway
- [Speech and Language Therapy Complex Needs and Dysphagia Service](#)
- [Paediatricians](#)
- [Audiology](#)
- [Little Ears group for deaf children](#)
- [SENDIASS](#)

#### SEND community groups

- Independent/parent-led support groups for families of children with SEN



4-5 years

back



The child I know is communicating at the level expected for their age

#### Children and Family Centres

- Stay and Play
- Themed Groups (e.g. Dad's groups, singing groups)
- Speech and Language Champions for signposting and advice
- 'time to talk' leaflets

#### Adult & Community Learning's Family Learning

- Story Explorers: 2-5 years (the REAL project)

#### Community Groups

- Local Toddler groups
- Paid groups (e.g. music or movement or swimming sessions)

#### Early Years Settings

- 'time to talk' [training and support](#)
- EYFS provision and [Communication Monitoring Tool](#)
- [Communication Friendly Environments including audit tool](#)
- Quality Adult-Child interaction strategies
- Family support and advice
- [Funded nursery places](#)
- Phonics programmes

#### Libraries

- Parents' collection books
- Picture and board books
- Story Stomp
- Sensory toys/areas
- Dual language books
- eAudio Books
- Events and clubs e.g. Lego, Duplo, coding etc.
- Summer reading challenge
- [Email](#)

#### Charities e.g.

- [HomeStart South Warwickshire](#)
- [Parenting Project](#)
- [Entrust Care Partnership](#)

#### Warwickshire's Child and Family Wellbeing Service

- Well Baby Clinics
- ChatHealth text line
- Health Visitor telephone advice line
- Additional support for families who have an area of need or vulnerability.

#### Children and Families

- [Family Information Service](#)
- Family Support Drop-ins
- Family Support [telephone line](#)

Return to menu

4-5 years

back



The child I know may have some delay in their communication level and may need some targeted support

#### Children and Family Centres

- Speech and Language Champions for signposting and advice
- 'chatter matters' preschool
- WellComm screening and Big Book of Ideas
- 'time to talk' leaflets
- Book Start Bag

#### Early Years Settings

- 'time to talk' training and support
- SENCO & Speech and Language Champion monitoring
- WellComm screening and Big Book of Ideas
- Language Enrichment groups e.g. Legro
- Partnership working with other agencies and signposting

#### Warwickshire's Child and Family Wellbeing Service

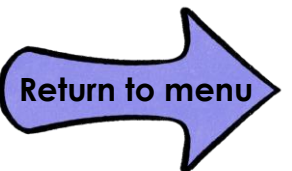
- Well Baby Clinics
- ChatHealth text line
- Health Visitor telephone advice line
- Additional support for families who have an area of need or vulnerability.

#### Adult & Community Learning's Family Learning

- Story Explorers: 2-5 years (the REAL project)

#### Speech and Language Therapy

- ['Let's Talk' Advice line \(text, email or call\)](#)



4-5 years

back



The child I know may have a significant level of communication difficulty and may need specialist support

#### Speech and Language Therapy

- SLT service for specialist level of need including parent-led therapy and direct work with children.

#### Early Years Inclusion and SEND Service (EYISS)

- [Specialist Teachers, Inclusion Mentors, SEND Childcare Coordinators, Child Development Advisors \(including Portage\)](#)
- Teachers of the Deaf including visual & multi-sensory impairment
- Training (see training tab)
- SENCO surgeries

#### Early Years Settings

- SENCO & Speech and Language Champion monitoring
- WellComm screening and Big Book of Ideas
- Individual Education Plans
- [Warwickshire Inclusion Kitemarking Scheme \(WinCKS\)](#)
- [Partnership working with other agencies](#) and signposting

#### Children and Family Centres

- SEND Stay and Play groups
- WellComm screening and Big Book of Ideas

#### Warwickshire's Child and Family Wellbeing Service

- Well Baby Clinics
- ChatHealth text line
- Health Visitor telephone advice line
- Additional support for families who have an area of need or vulnerability including SEND

#### Specialist Services

- Warwickshire Preschool Autism Service
- Down Syndrome Pathway
- [Speech and Language Therapy Complex Needs and Dysphagia Service](#)
- [Paediatricians](#)
- [Audiology](#)
- [Little Ears group for deaf children](#)
- [SENDIASS](#)

#### SEND community groups

- Independent/parent-led support groups for families of children with SEN

