

A452 Europa Way - Queensway to Princes Drive Signalisation scheme: Progress Update

April

Date: 08/05/2025

Issue: No.11

Overview

The scheme has progressed on schedule throughout April, there was great progress with several ongoing phases and the initiation of Phase K.

The lower footpath surfacing works on Phase F have been completed and the upper footpath is awaiting a final surface course of tarmac in early May. Phase completion is planned for mid-May.

Phase J achieved key milestones with the completion of the western footpath to the Asps and continued progress on the splitter island. The new pedestrian path received both upper and lower tarmac layers, including the surface course. The path is set to open in late-May.

Phase K was initiated and involves the relocation of the pedestrian crossing point. Excavation and ducting installation for traffic signal cable were completed, followed by the laying of lower structural stone layers. Tactile paving slabs were also installed.

Activities completed within phase B included laying tactile paving zones on the widened pedestrian footpath and installing specialist traffic signal cables which will connect new traffic signals to the master controller cabinet.

To ensure the flow of traffic throughout the scheme is not adversely impacted, active traffic management will only take place during off peak times between 9:00am-3:30pm.

We continue to thank all residents, businesses, and visitors to the area for their co-operation and patience as we work to deliver these improvements.

Works are progressing on time and completion of the scheme is still on track for summer 2025.

On behalf of WCC and CR Reynolds, we apologise for any inconvenience/delays you may encounter due to the temporary traffic management.

Author: KC

Progress to Date

Phase K - Old Warwick Road Roundabout - South Splitter Island

Works on Phase K commenced in April and consisted of a newly located crossing point which will tie safer with the splitter island and Myton Road. As part of the scheme the island will receive a new set of smart traffic signals and new pedestrian guardrails.

The existing crossing point and surfacing was excavated in preparation for the new traffic signal ducting. The laying of traffic signal ducting involved carefully trenching around existing services and setting the new ducting at the approved depths required, see Figure 1.

Once completed the lower structural stone layers of the footpath were then laid and levelled in preparation for the upper tarmac layers. The upper surface layers are scheduled to be laid in Mid-May.



Figure 1 Phase K – Traffic Signal Cable Ducting Installation

To ensure visually impaired members of the public can navigate footways safely, tactile paving slabs are required. Tactile paving indicates, using a series of raised bumps, any dangers such as crossing points or any of change of use such as a shared use with cyclists. Attention to detail is importation during the installation, ensuring that all raised dots align with one another in every axis, thus not causing any confusion to visually impaired users. The slabs on Phase K were laid and fully completed during mid-April, see Figure 2.



Figure 2 Phase K - Tactile Paving Installation Completed

Phase J – Europa Way Crossing Point

Great progress was made throughout the month on phase J. The western footpath connecting to the Asps housing development was completed and works within the splitter island were continued.

The upper and lower tarmac layers were laid on the pedestrian footpath including the surface course, see Figure 3. Tactile paving slabs were also installed at the crossing point.



Figure 3 Phase J – Before & After

Within the splitter island, the new pedestrian guardrail was installed. The guardrail was installed on innovative quick release sockets to ensure that if damage occurs in the future such as a vehicle collision, the damaged panels can be quickly replaced without damaging the surface course of the footpath, see Figure 4.



Figure 4 Phase J – Pedestrian Guard Rail Installation

Throughout May, works will continue on the splitter island and adjacent pedestrian crossing. The surface course on the splitter island will be laid during mid-May and the tactile paving will be laid on the adjacent crossing in early-May.

Phase H - Myton Road South Widening

Works on Phase H progressed throughout the month allowing for the new widened pedestrian footpath to open to the public.

In early-April the construction of the new kerb alignment was continued into Myton Lane. The installation of the new street lighting columns was completed and subsequently energised National Grid. The pre-existing street lighting columns can now be removed, which will take place in early-May.

During mid-April, the upper binder layer of tarmac was laid to both the widened carriageway lane and pedestrian footpath. Following this, the tactile paving slabs were laid, see Figure 5.



Figure 5 Phase H - Footway surfacing and Tactile Paving

Throughout May works will continue on the phase and include activities such as laying the final surface layer of tarmac on the footpath and further footpath widening from the Moorings entrance westward along Myton Road.

Phase B – Tachbrook Drive/Queensway Widening

Activities completed on Phase B during April included completion of several tactile paving zones within the new widened pedestrian footpath, see Figure 6.

To provide power and data to the new traffic signals on the south of the scheme, a large amount of specialist traffic signal cable is required between the individual signals and the master controller cabinet. Throughout the month, the installation of the cable was carried out and involved pulling cables through the multitude of ducts which were installed prior, see Figure 6.



Figure 6 Phase B – New Pedestrian Crossing Tactile and Traffic Signal Cable Installation

The footpath is currently open and will be fully completed following final surfacing works planned for Mid-May. The traffic signals installation will take place in June.

Phase F – Queensway - Europa Way North Gabion Retaining Wall

Throughout April, several activities were completed on Phase F enabling the upper footpath to open safely to the public.

New high power-low energy LED carriageway lighting columns were installed and connected by National Grid along the upper footpath. Several new signs were also erected including a large Advanced Direction Sign (ADS), see Figure 1.



Figure 7 Phase F – New ADS Sign

The lower footpath was surfaced during Mid-April with the final tarmac layers which included the lower binder layer and the upper surface course, see Figure 9.

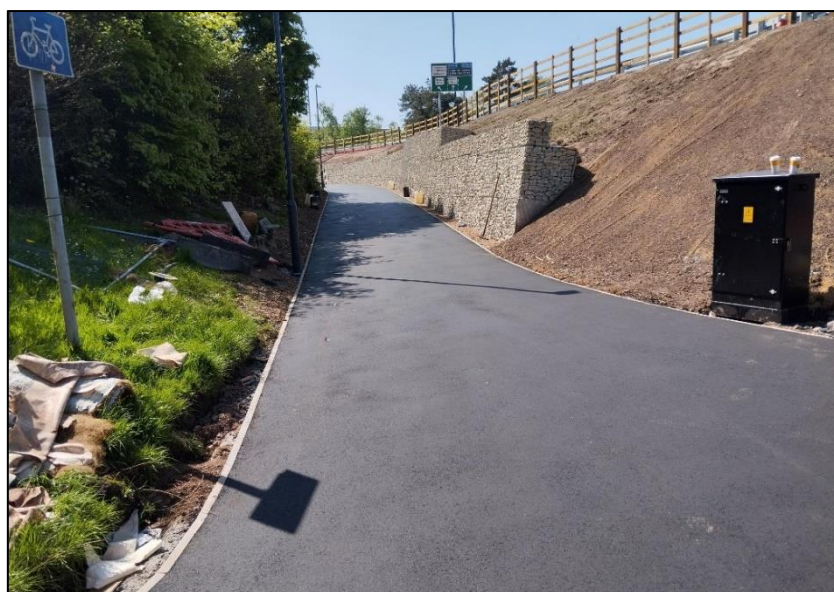


Figure 8 Phase F – Surfaced Lower Footpath

The lower path is due to open shortly, after works are completed by National Grid to connect and power the new footpath lighting. The upper path is awaiting its final surface layer of tarmac, which is planned for mid-May. Final completion of the phase is scheduled for late May.