



**A4177 Birmingham Road, Hatton.**

**S278 Highway works - Scheme update 22<sup>nd</sup> August 2024**

**We had a planned visit from Cllr Jan Matecki and Cllr Peter Phillips on Monday 12<sup>th</sup> August onsite. The Cllr's were supervised onsite by colleagues from Warwickshire County Council and McPhillips to discuss progress onsite.**



**The contractor from the previous update reprogrammes their works to accommodate works from other phases.**

**The following S278 highway activities will be taking place on the A4177 Birmingham Road over the coming weeks by our appointed contractor McPhillips:**

- The focus for the s278 works in the coming weeks will be upgrading the highway drainage on the southern side of Birmingham Road (fronting the bungalows). This work will include connecting storm sewer EX02 to EX01, both of which are located at Ch22m on either side of Birmingham Road.
- This will then allow for the contractor to commence the installation of the kerb drain system from Ch25m to Ch125m, during which time access to the bungalows to the south of Birmingham Road, will be maintained.
- With the new kerb drains being installed, existing highway gullies on the southern side of Birmingham Road (referenced as EG07-EG11) will be broken out and removed.
- Once all drainage works on the southern side are complete, the existing narrow footway on the southern side of Birmingham Road (between Ch25m – Ch125m will be reinstated and resurfaced.

**The following s278 highway activities have been completed by McPhillips:**

- The s278 works over the last few weeks has been concentrated in the area between Ch120m - Ch35m, which is to the east of the permanent S278 access.
- Edging kerbs were laid either side of the footway / cycleway.
- Prior to building up the construction layers within the footway / cycleway, street furniture such as the new lighting columns were installed and connected.
- The embankments to the rear of the footway / cycleway were then formed by grading the topsoil.
- Type 1 sub-base was placed within the footway / cycleway and trimmed to suit finished levels.
- Utility covers were also adjusted to suit finished footway / cycleway levels.
- Type 1 sub-base was laid and trimmed within the area of carriageway widening, following which, Base and Binder Course were laid.

- Binder Course was then laid within the footway / cycleway to suit finished levels.

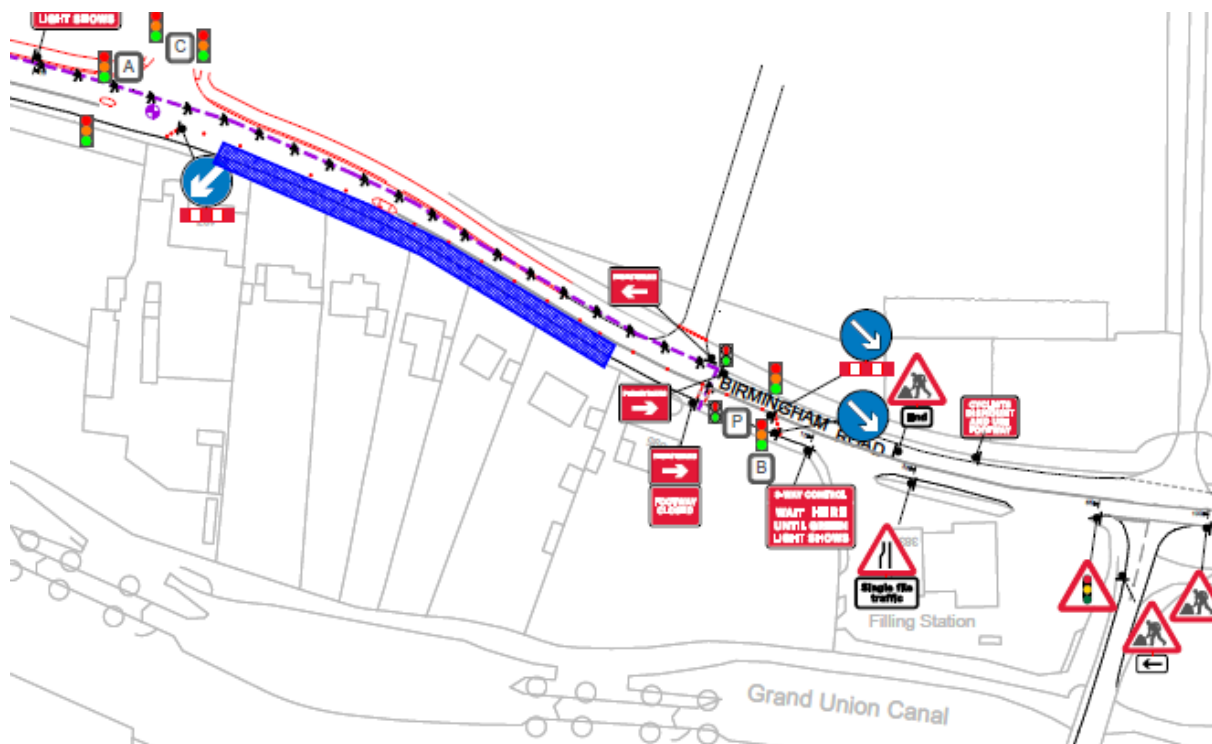
### Traffic Management:

The 3-way traffic signals on Birmingham Road will continue to be manned by an on-site Traffix operative throughout the day to try to minimise any long queues from forming during peak periods.

The traffic management in place for the scheme is currently utilising full-time 3-way traffic signals with a dedicated pedestrian crossing facility.

McPhillips will be working within Phase 7 (see extracts below) over the next few weeks, during which time the 3-way traffic signals on Birmingham Road will be positioned to suit the works area. The distance between signal heads will remain at a maximum of 150m;

**Phase 7** (current section being constructed in blue);





A few onsite images of the challenges the team are facing.



**Communications:**

This briefing document will be updated every 4 weeks and will be accessible on the WCC section 278 website.

Stay informed about construction progress by visiting the dedicated project page for these works. <https://www.warwickshire.gov.uk/major-transport-construction-projects/a4177-birmingham-road-hatton-union-view/3>

For any enquiries related to the scheme please contact:

[jameshall@warwickshire.gov.uk](mailto:jameshall@warwickshire.gov.uk)