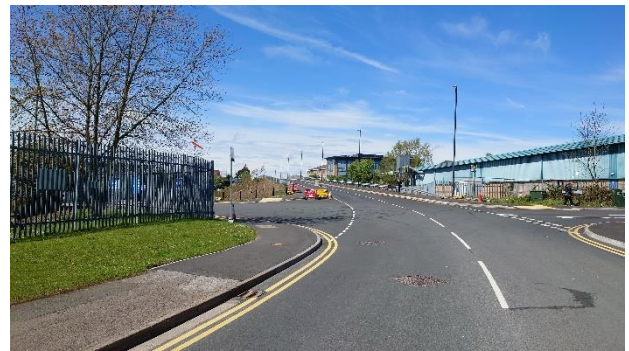


Eastern and Western approaches

Works are completed and the road is open to residents only whilst works continue along Bermuda Road, west of Phoenix Centre.



Barling Way and The Bridleway

The footway has been opened following installation of new street lighting. The temporary material storage area between The Bridleway and Templar Drive has been cleared and made ready for landscaping works. The bridge is currently opened to residents in Bermuda Village, The Bridleway, Knights Road, and Templar Drive.





Bermuda Road / Bermuda Village Junction

Works on the construction of new bus stop and road layout by Phoenix Centre are completed and works on the footway in southwestern corner are continuing. Traffic management was installed to close Bermuda Road from the Phoenix Centre to enable drainage and roadway works to continue between Bermuda Village and Rider Close. Construction of roadway surfacing was completed w/e 26-April 2024 and access to the bridge made available to residents in Bermuda Village.



Bermuda Road / Rider Close Junction

Widening works along Bermuda Road at the junction with Rider Close have continued. Traffic management was installed along the southern side of Bermuda Road from the junction with Rider Close to enable drainage, footway widening and roadway works to be undertaken between Rider Close and Hazel Way.

