



St George's Way eastern approach to Bermuda Bridge

The contractor has completed the remedial works on the gabion wall in St George's Way together with additional roadway remedial works. A further inspection of St George's Way will be undertaken prior to bridge opening and any defects will be remedied in advance of opening the bridge.

Eastern embankment approach to Bermuda Bridge

Works on eastern approach to Bermuda Bridge was completed and was opened for pedestrians and cyclists since October 2023. The road is planned to be opened when it is considered safe to do so following completion of works in Bermuda Road and The Bridleway.

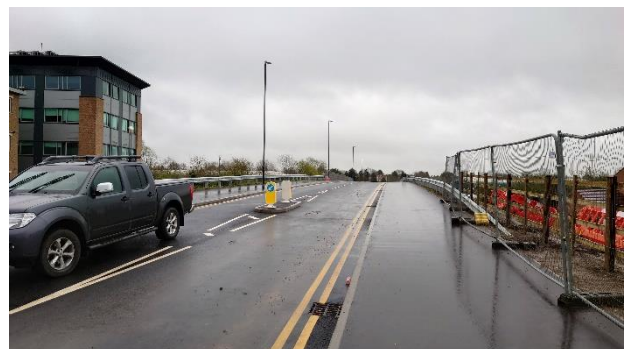


Bermuda Bridge Works

The Bermuda Bridge was completed in January 2024 and has been opened for pedestrians and cyclists since October 2023 and is planned to be opened at the same time as both approaches.

Western embankment approach to Bermuda Bridge

Works on the western approach up to its junction with The Bridleway was completed and has been opened for pedestrians and cyclists since October 2023. The road is planned to be opened at the same time as Bermuda Bridge.



Barling Way and The Bridleway

Final footway surfacing has been installed together with a new post and rail timber fence denoting the highway boundary along both sides of the footway at the southern end of Barling Way has been installed. The footway will be opened following installation of new street lighting. The temporary material storage area between The Bridleway and Templar Drive is being cleared and will be relocated by Hazel Way. New gas vent trench turrets have been installed.



Bermuda Road / Bermuda Village Junction
Works on the construction of new bus stop and road layout by Phoenix Centre are ongoing. Traffic management was installed along the southern side of Bermuda Road opposite the Phoenix Centre to enable drainage and roadway works to be undertaken between Bermuda Village and Rider Close.



**Bermuda Road / Rider Close Junction**

Widening works along Bermuda Road at the junction with Rider Close have continued. Traffic management was installed along the northern side of Bermuda Road opposite the junction with Rider Close to enable drainage and roadway works to be undertaken between Rider Close and Hazel Way.

